

YFIRLÝSING HÖNNUÐAR

10.9.2024

Varðar: Sérupprætti burðarvirkis yfirbyggingar fyrir íbúðarhús á Kerlingarhól í Grímsnes- og Grafningshreppi

Neðangreindur hönnuður hefur yfirfarið meðfylgjandi sérupprætti gerða af hönnuðum hjá Tekta ehf.

- *2024-09-10-Kerlingarhóll-Burðarvirki-Yfirbygging.pdf*




Uppdrættir þessir uppfylla hönnunarforsendur skv. byggingareglugerð 112/2012.

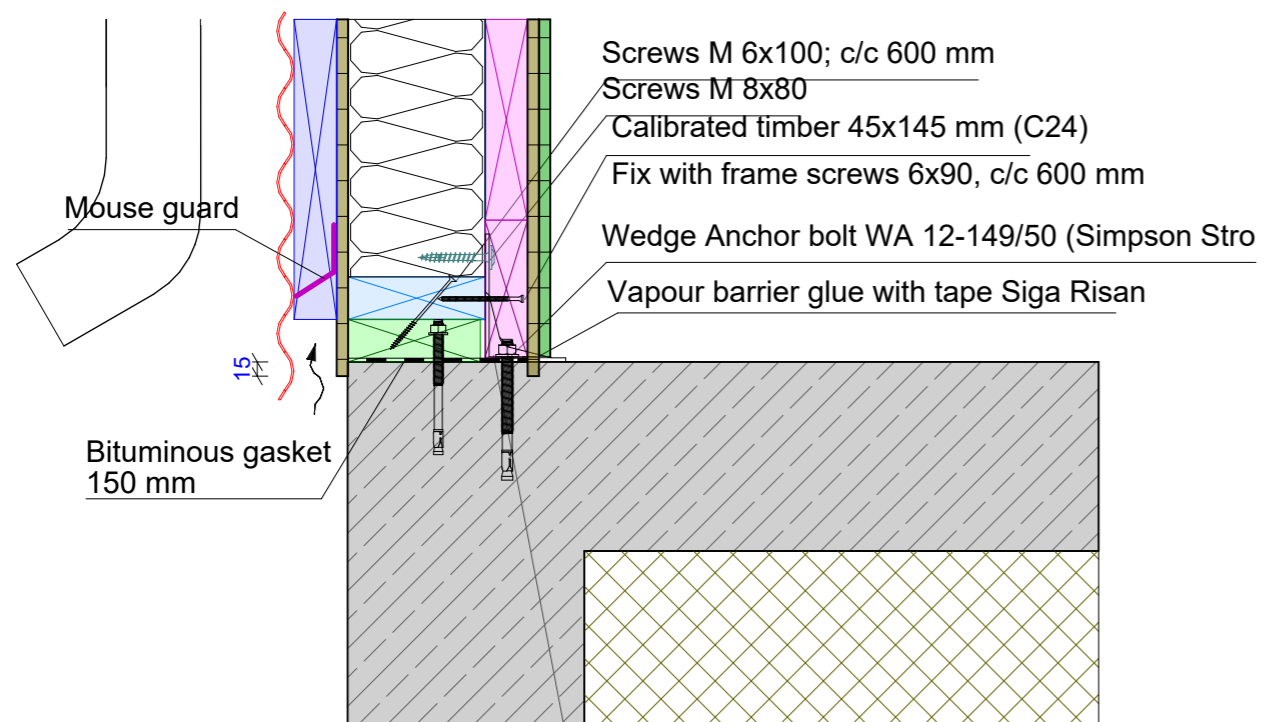
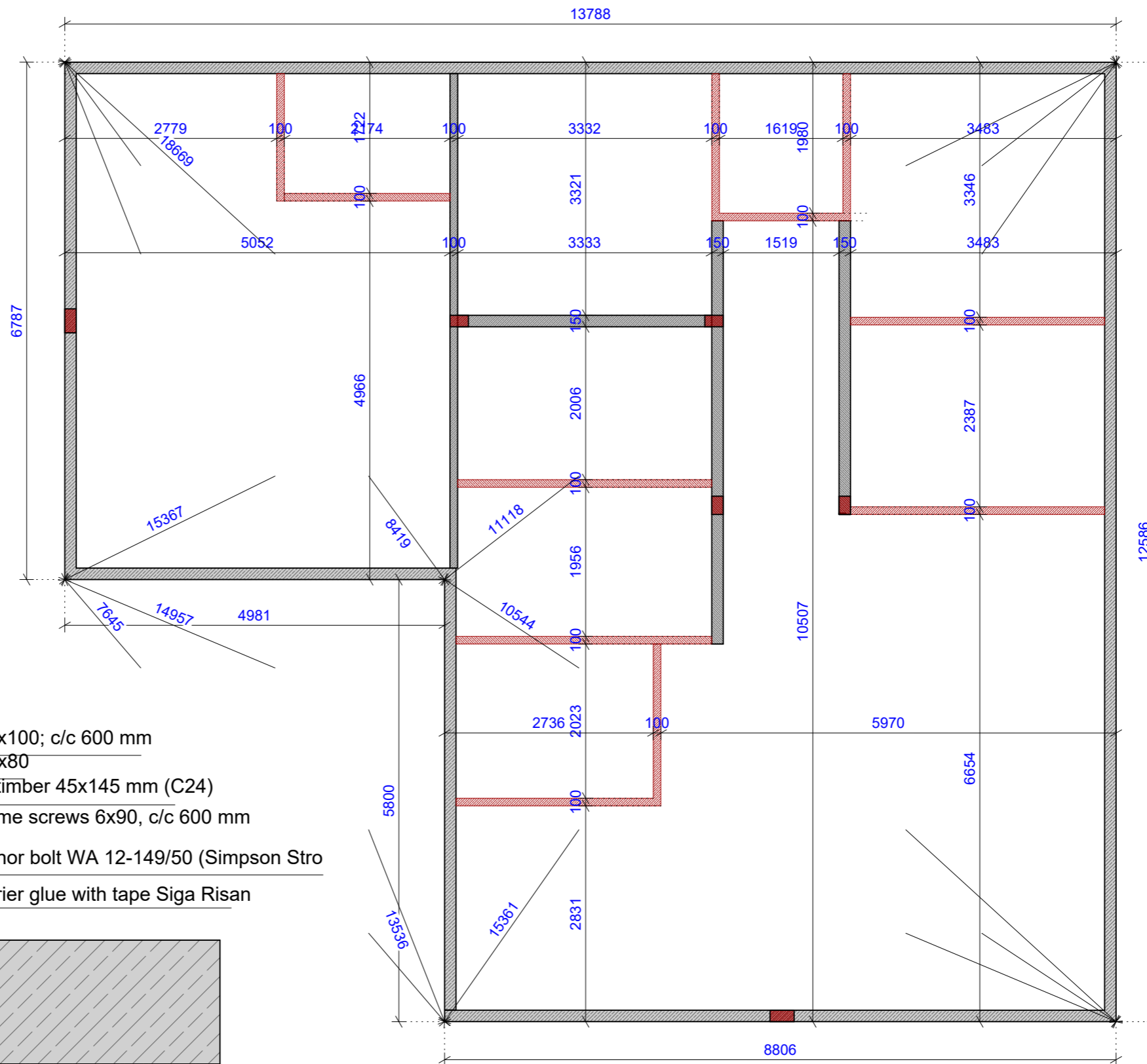
Álagsforsendur eru skv. evrópsku þolhönnunarstöðlunum og íslenskum þjóðarviðaukum, ÍST EN 1990-1998 / NA:2010.

Aðalupprættir sem liggja til grundvallar eru gerðir af neðangreindum hönnuði, dagsettir 01.05.2024.

Sigurður Unnar Sigurðsson
verkfræðingur 290772-4279



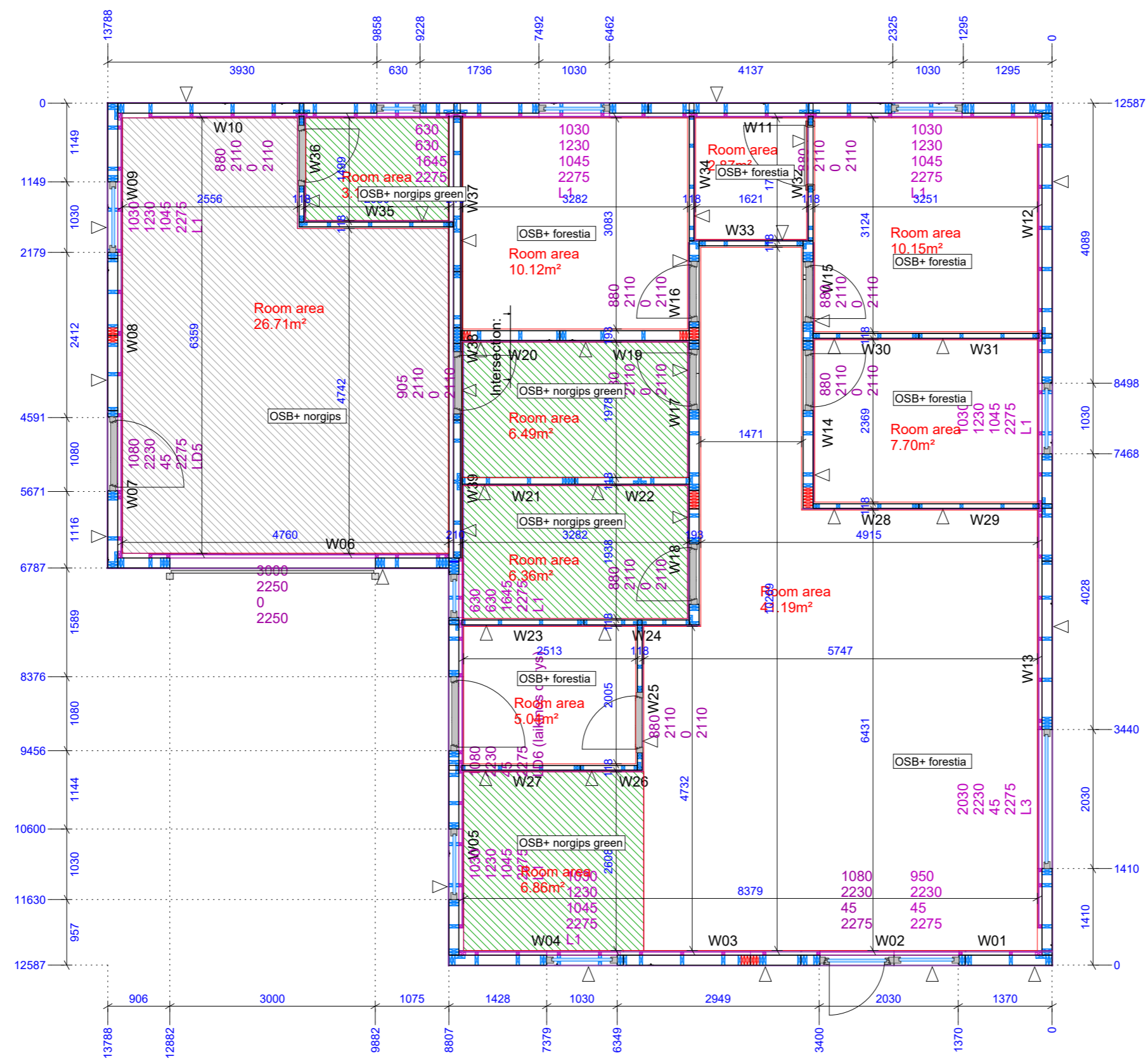
-  Load bearing walls
-  Concentrated - point loads
-  Partitions



Angle AKR 135G (c/c 600 mm) fix with WA Anchor bolts 12x149 to the betong floor and with ring shang nails 4x50 (14 units to the wall)

Etapas TP		SK-S-24-652		Sutarties nr: SK-S-24-652	
				Projektas: SK-S-24-652	
				Adresas: Iceland, Helsingi	
				Uzsakovas: Tekta EHF	
				M : 1 : 65	
		Lapas	Lapu		

First Floor



Sutarties nr: SK-S-24-652
 Projektas: SK-S-24-652
 Adresas: Iceland, Helsingi
 Uzsakovas: Tekta EHF

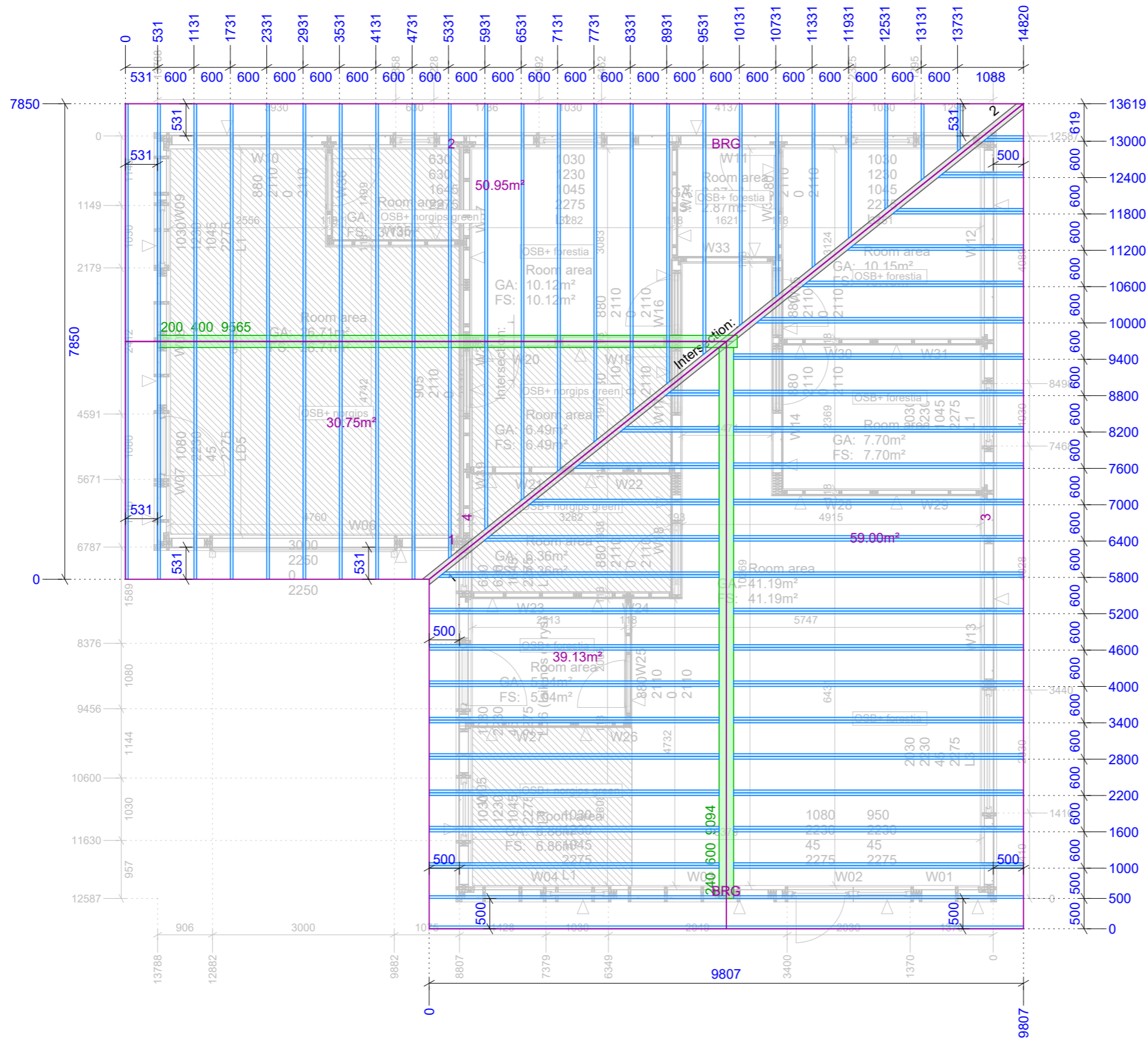
M : 1 : 70

Plano pavad.:
SK-S-24-652, First Floor

Laida

0

Etapas	SK-S-24-652	Lapas	Lapu
TP			



Roof plan

Sutarties nr: SK-S-24-652
 Projektas: SK-S-24-652
 Adresas: Iceland, Helsingi
 Uzsakovas: Tekta EHF

M : 1 : 75

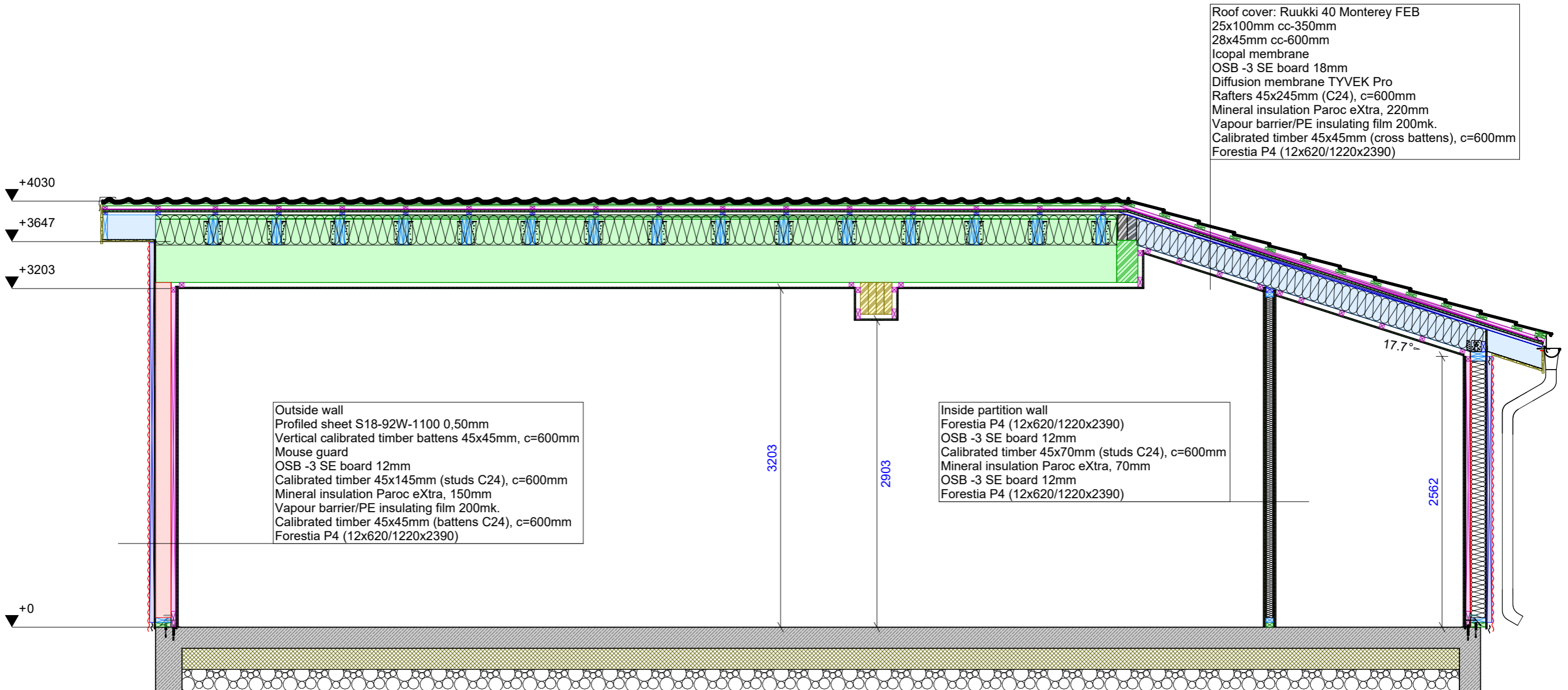
Plano pavad.:
SK-S-24-652, Roof

Laida

0

Etapas	SK-S-24-652	Lapas	Lapu
TP			

Section 1-1



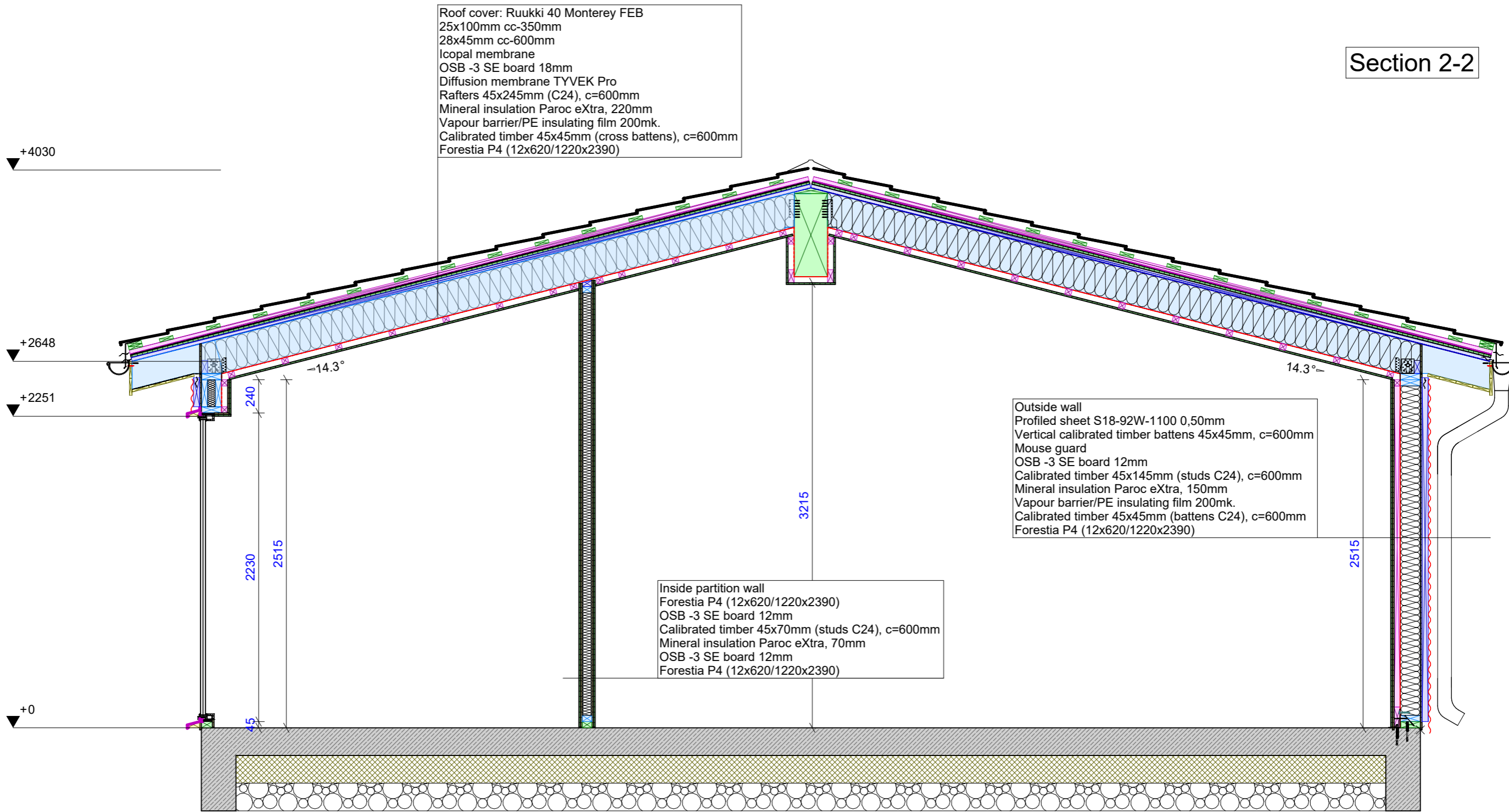
Roof cover: Ruukki 40 Monterey FEB
 25x100mm cc-350mm
 28x45mm cc-600mm
 Icopal membrane
 OSB -3 SE board 18mm
 Diffusion membrane TYVEK Pro
 Rafters 45x245mm (C24), c=600mm
 Mineral insulation Paroc eXtra, 220mm
 Vapour barrier/PE insulating film 200mk.
 Calibrated timber 45x45mm (cross battens), c=600mm
 Forestia P4 (12x620/1220x2390)

Outside wall
 Profiled sheet S18-92W-1100 0,50mm
 Vertical calibrated timber battens 45x45mm, c=600mm
 Mouse guard
 OSB -3 SE board 12mm
 Calibrated timber 45x145mm (studs C24), c=600mm
 Mineral insulation Paroc eXtra, 150mm
 Vapour barrier/PE insulating film 200mk.
 Calibrated timber 45x45mm (battens C24), c=600mm
 Forestia P4 (12x620/1220x2390)

Inside partition wall
 Forestia P4 (12x620/1220x2390)
 OSB -3 SE board 12mm
 Calibrated timber 45x70mm (studs C24), c=600mm
 Mineral insulation Paroc eXtra, 70mm
 OSB -3 SE board 12mm
 Forestia P4 (12x620/1220x2390)

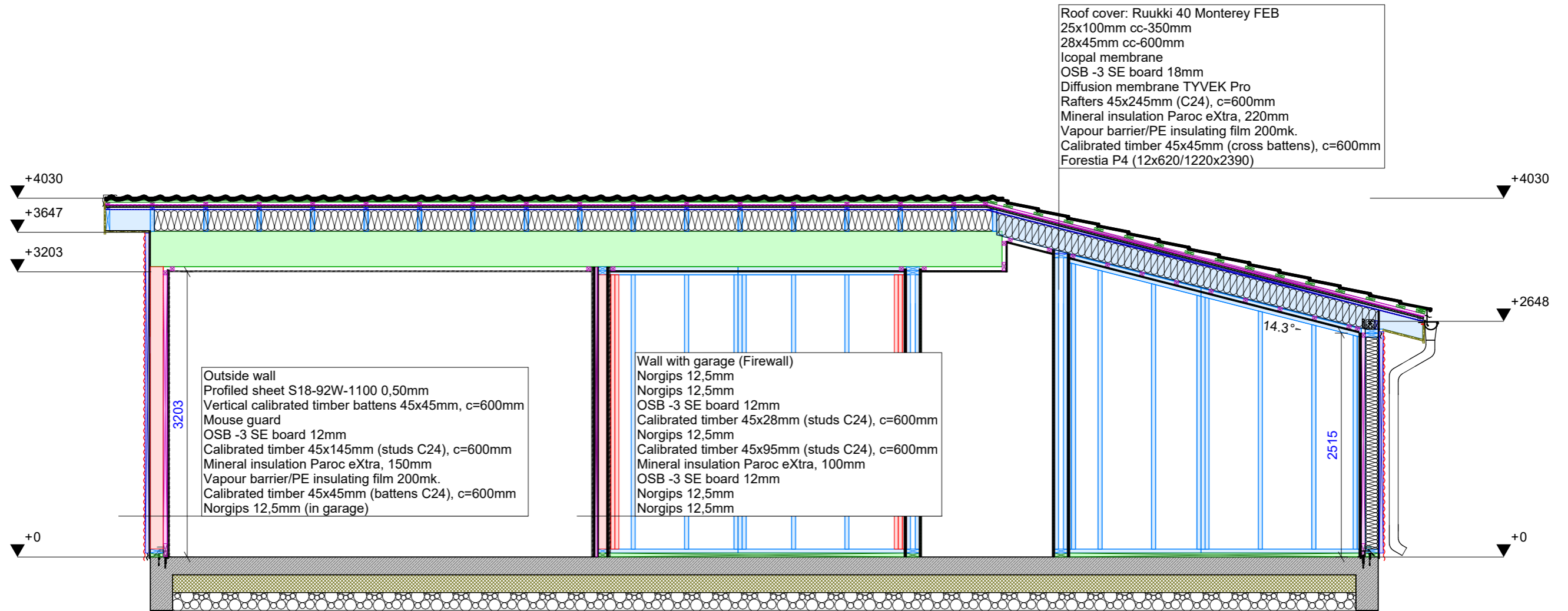
		Sutarties nr: SK-S-24-652	
		Projektas: SK-S-24-652	
		Adresas: Iceland, Helsingi	
		Uzsakovas: Tekta EHF	
		M : 1 : 40	
		Plano pavad.:	
		SK-S-24-652, Section 1-1	
		Laida	
		0	
Etapas	SK-S-24-652	Lapas	Lapu
TP			

Section 2-2



		Sutarties nr: SK-S-24-652	
		Projektas: SK-S-24-652	
		Adresas: Iceland, Helsingi	
		Uzsakovas: Tekta EHF	
		M : 1 : 30	
		Plano pavad.:	
		SK-S-24-652, Section 2-2	
		Laida	
		0	
Etapas	SK-S-24-652	Lapas	Lapu
TP			

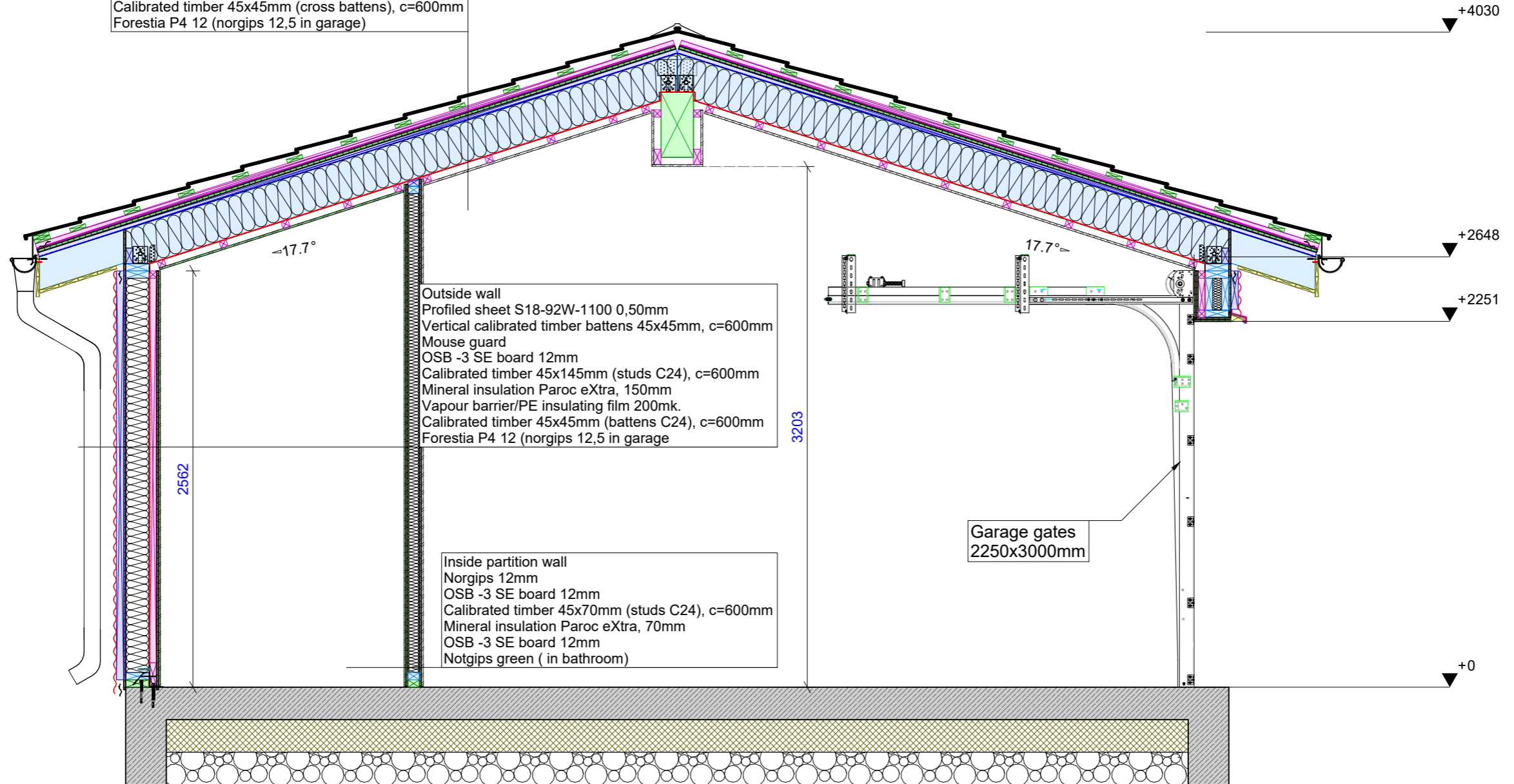
Section 3-3



		Sutarties nr: SK-S-24-652	
		Projektas: SK-S-24-652	
		Adresas: Iceland, Helsingi	
		Uzasakovas: Tekta EHF	
		M : 1 : 50	
		Plano pavad.:	
		SK-S-24-652, Section 3-3	
Etapas		Lapas	Lapu
TP			
SK-S-24-652			

Section 4-4

Roof cover: Ruukki 40 Monterey FEB
 25x100mm cc-350mm
 28x45mm cc-600mm
 Icopal membrane
 OSB -3 SE board 18mm
 Diffusion membrane TYVEK Pro
 Rafters 45x245mm (C24), c=600mm
 Mineral insulation Paroc eXtra, 220mm
 Vapour barrier/PE insulating film 200mk.
 Calibrated timber 45x45mm (cross battens), c=600mm
 Forestia P4 12 (norgips 12,5 in garage)



Outside wall
 Profiled sheet S18-92W-1100 0,50mm
 Vertical calibrated timber battens 45x45mm, c=600mm
 Mouse guard
 OSB -3 SE board 12mm
 Calibrated timber 45x145mm (studs C24), c=600mm
 Mineral insulation Paroc eXtra, 150mm
 Vapour barrier/PE insulating film 200mk.
 Calibrated timber 45x45mm (battens C24), c=600mm
 Forestia P4 12 (norgips 12,5 in garage)

Inside partition wall
 Norgips 12mm
 OSB -3 SE board 12mm
 Calibrated timber 45x70mm (studs C24), c=600mm
 Mineral insulation Paroc eXtra, 70mm
 OSB -3 SE board 12mm
 Notgips green (in bathroom)

Garage gates
 2250x3000mm

Sutarties nr: SK-S-24-652
 Projektas: SK-S-24-652
 Adresas: Iceland, Helsingi
 Uzsakovas: Tekta EHF

M : 1 : 30

Plano pavad.:
SK-S-24-652, Section 4-4

Laida

0

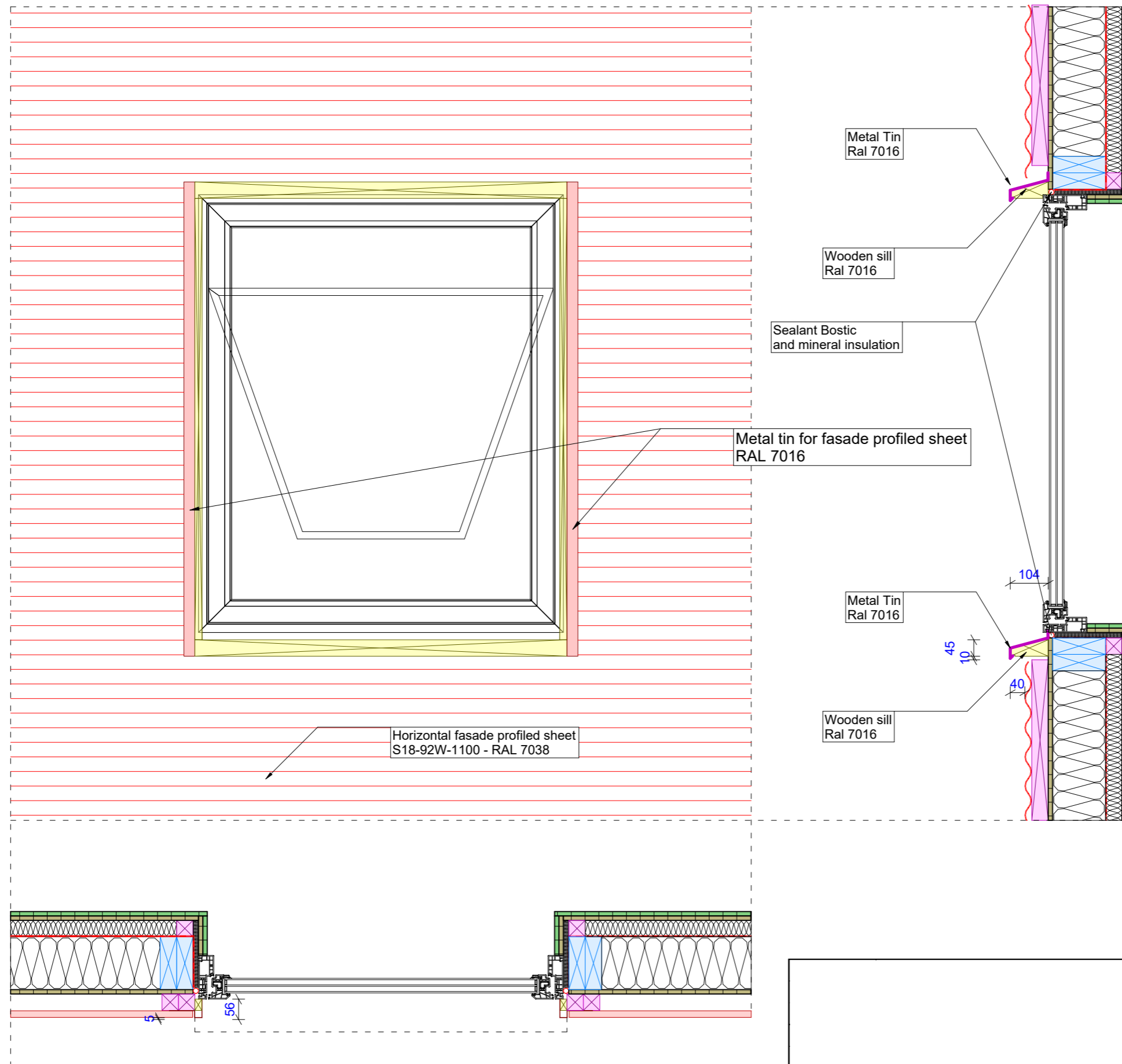
Etapas
 TP

SK-S-24-652

Lapas

Lapu

Window detail

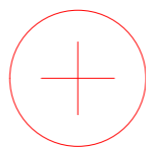
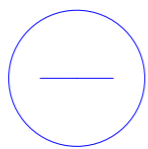


Etapas TP		SK-S-24-652	Sutarties nr: SK-S-24-652 Projektas: SK-S-24-652 Adresas: Iceland, Helsingi Uzsakovas: Tekta EHF		M : 1 : 12
			Plano pavad.: SK-S-24-652, Window detail		Laida 0
			Lapas	Lapu	

18 45 12 145 45 12

Outside wall
 Profiled sheet S18-92W-1100 0,50mm, RAL 7038
 Vertical calibrated timber battens 45x45mm, c=600mm
 Mouse guard
 OSB -3 SE board 12mm
 Calibrated timber 45x145mm (studs C24), c=600mm
 Mineral insulation Paroc eXtra, 150mm
 Vapour barrier/PE insulating film 200mk.
 Calibrated timber 45x45mm (battens C24), c=600mm
 Forestia P4 (12x620/1220x2390)

Wall on foundation



Mouse barrier

Sole plate - Calibrated (impregnated) timber 45x145 mm (C24)

Screws M 6x100; c/c 600 mm

Angle AKR 135G (c/c 600 mm) fix with WA Anchor bolts 12x149 to the betong floor and with ring shang nails 4x50 (14 units to the wall)

15

Bituminous gasket 150 mm

Wedge Anchor bolt WA 10-143/70 (Simpson Strong-Tie)
 Sole plate fix every 400 mm

Sutarties nr: SK-S-24-652
 Projektas: SK-S-24-652
 Adresas: Iceland, Helsingi
 Uzsakovas: Tekta EHF

M : 1 : 6

Plano pavad.:
SK-S-24-652, Detail A

Laida

0

Etapas

TP

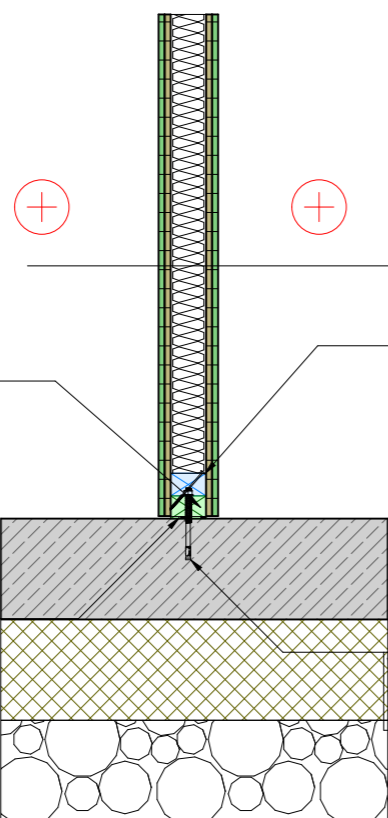
SK-S-24-652

Lapas

Lapu

Inside wall on foundation

12 12
127012



Inside partition wall
Forestia P4 (12x620/1220x2390)
OSB -3 SE board 12mm
Calibrated timber 45x70mm (studs C24), c=600mm
Mineral insulation Paroc eXtra, 70mm
OSB -3 SE board 12mm
Forestia P4 (12x620/1220x2390)

Sole plate - Calibrated (impregnated) timber 45x95 mm (C24)

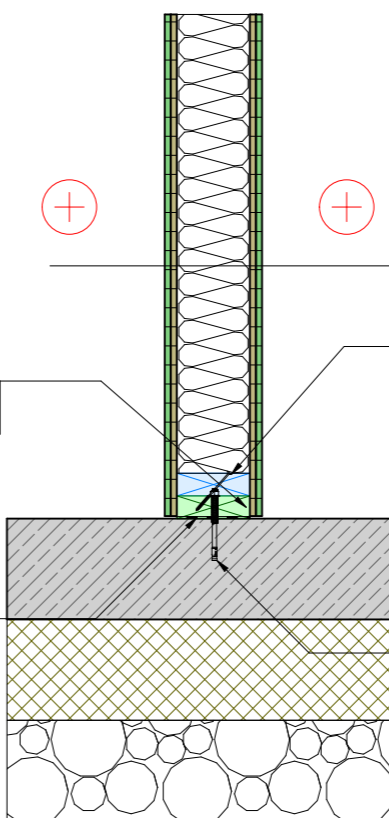
Screws M 6x100; c/c 600 mm

Bituminous gasket 100 mm

Wedge Anchor bolt WA 10-143/70 (Simpson Strong-Tie)
Sole plate fix every 400 mm

28
12 13
13 12
12, 1295 12

12 12
12 145 12



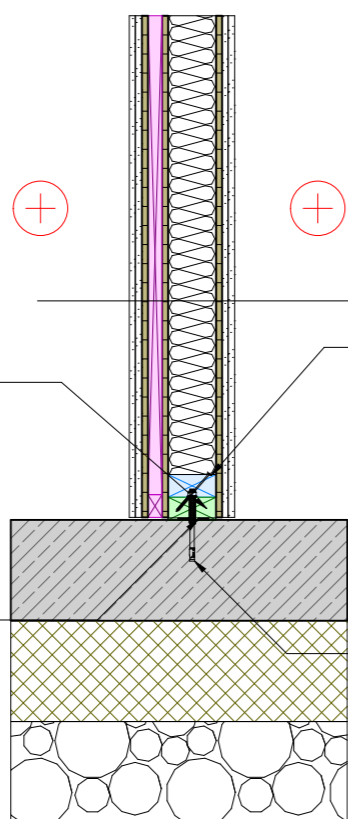
Inside load bearing wall
Forestia P4 (12x620/1220x2390)
OSB -3 SE board 12mm
Calibrated timber 45x145mm (studs C24), c=600mm
Mineral insulation Paroc eXtra, 100+42mm
OSB -3 SE board 12mm
Forestia P4 (12x620/1220x2390)

Sole plate - Calibrated (impregnated) timber 45x145 mm (C24)

Screws M 6x100; c/c 600 mm

Bituminous gasket 150 mm

Wedge Anchor bolt WA 10-143/70 (Simpson Strong-Tie)
Sole plate fix every 400 mm



Wall with garage (Firewall)
Norgips 12,5mm
Norgips 12,5mm
OSB -3 SE board 12mm
Calibrated timber 45x28mm (studs C24), c=600mm
Norgips 12,5mm
Calibrated timber 45x95mm (studs C24), c=600mm
Mineral insulation Paroc eXtra, 100mm
OSB -3 SE board 12mm
Norgips 12,5mm
Norgips 12,5mm

Sole plate - Calibrated (impregnated) timber 45x95 mm (C24)

Screws M 6x100; c/c 600 mm

Bituminous gasket 100 mm

Wedge Anchor bolt WA 10-143/70 (Simpson Strong-Tie)
Sole plate fix every 400 mm

Sutarties nr: SK-S-24-652
Projektas: SK-S-24-652
Adresas: Iceland, Helsingi
Uzsakovas: Tekta EHF

M : 1 : 15

Plano pavad.:
SK-S-24-652, Detail B

Laida

0

Etapas	TP	SK-S-24-652	Lapas	Lapu

Wall connection

Wall with garage (Firewall)
 Norgips 12,5mm
 Norgips 12,5mm
 OSB -3 SE board 12mm
 Calibrated timber 45x28mm (studs C24), c=600mm
 Norgips 12,5mm
 Calibrated timber 45x95mm (studs C24), c=600mm
 Mineral insulation Paroc eXtra, 100mm
 OSB -3 SE board 12mm
 Norgips 12,5mm
 Norgips 12,5mm

Norgips in garage

Screws M 8x240; c/c 600 mm

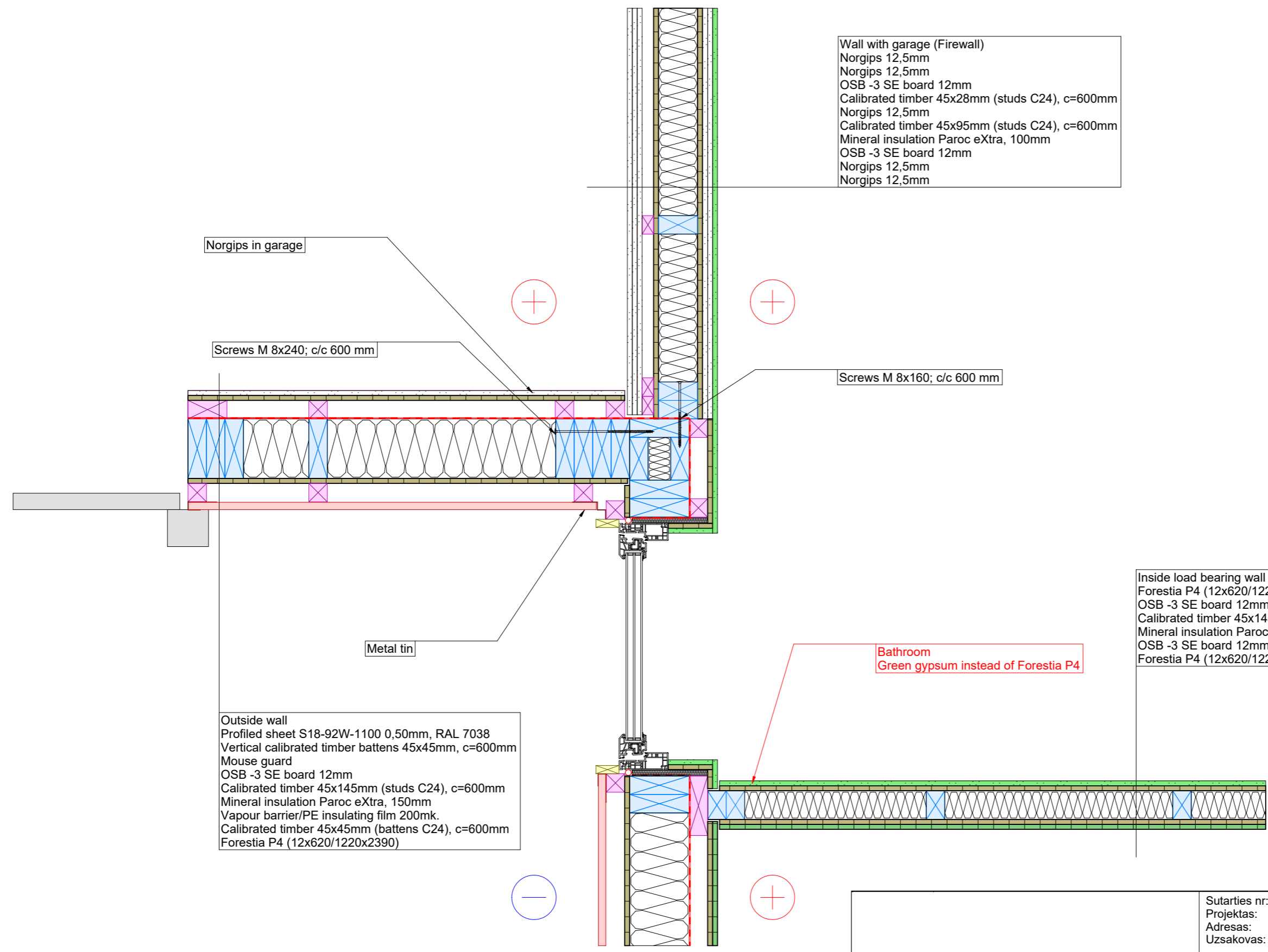
Screws M 8x160; c/c 600 mm

Metal tin

Bathroom
 Green gypsum instead of Forestia P4

Inside load bearing wall
 Forestia P4 (12x620/1220x2390)
 OSB -3 SE board 12mm
 Calibrated timber 45x145mm (studs C24), c=600mm
 Mineral insulation Paroc eXtra, 100+42mm
 OSB -3 SE board 12mm
 Forestia P4 (12x620/1220x2390)

Outside wall
 Profiled sheet S18-92W-1100 0,50mm, RAL 7038
 Vertical calibrated timber battens 45x45mm, c=600mm
 Mouse guard
 OSB -3 SE board 12mm
 Calibrated timber 45x145mm (studs C24), c=600mm
 Mineral insulation Paroc eXtra, 150mm
 Vapour barrier/PE insulating film 200mk.
 Calibrated timber 45x45mm (battens C24), c=600mm
 Forestia P4 (12x620/1220x2390)



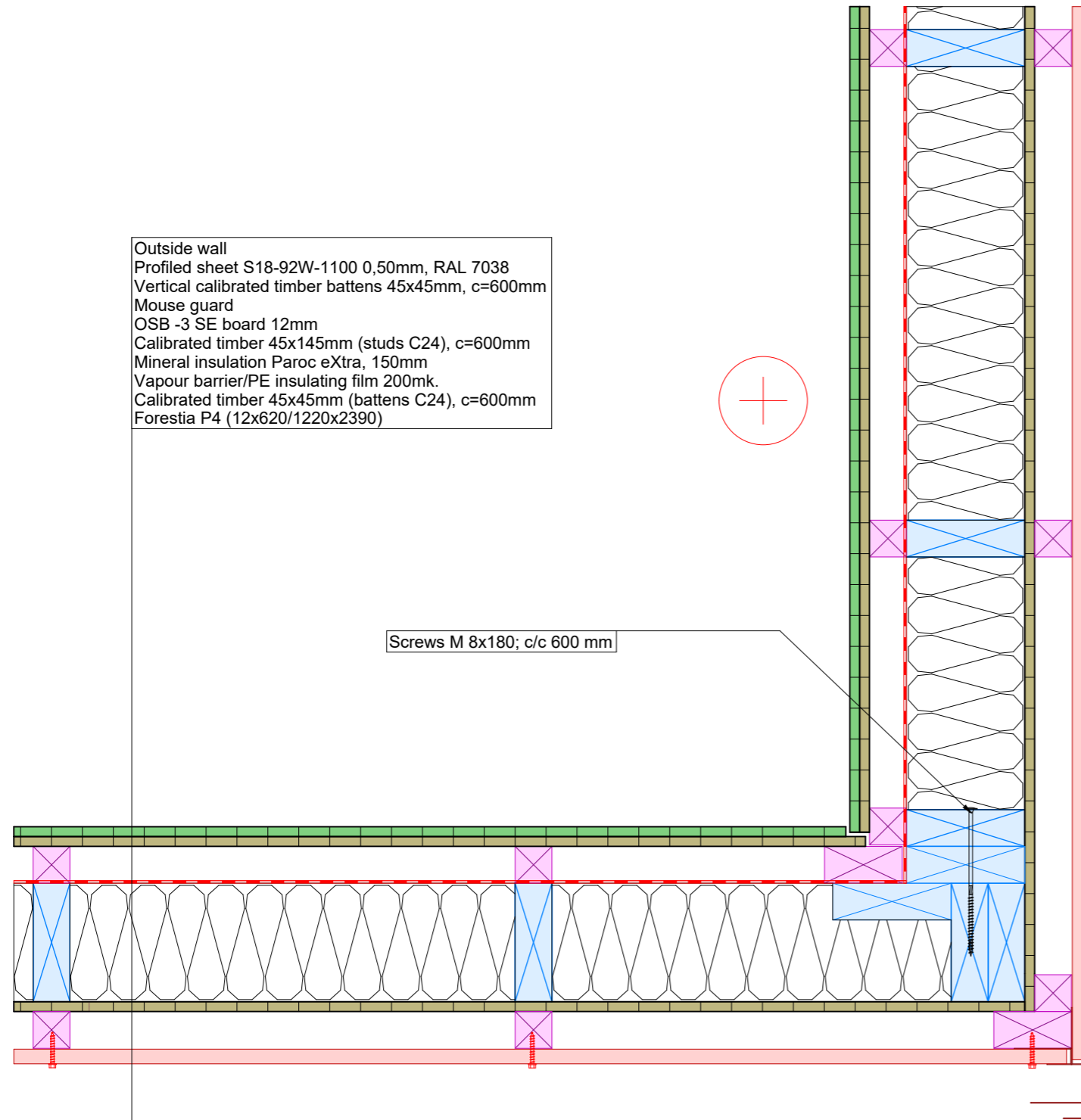
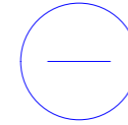
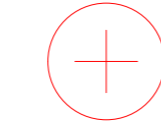
Etapas TP		SK-S-24-652		Sutarties nr: SK-S-24-652 Projekta: SK-S-24-652 Adresas: Iceland, Helsingi Uzsakovas: Tekta EHF		M : 1 : 10	
		SK-S-24-652, Detail C		Laida	0	Lapas	Lapu

Wall connection

12
12 45 145 12 46 18

Outside wall
 Profiled sheet S18-92W-1100 0,50mm, RAL 7038
 Vertical calibrated timber battens 45x45mm, c=600mm
 Mouse guard
 OSB -3 SE board 12mm
 Calibrated timber 45x145mm (studs C24), c=600mm
 Mineral insulation Paroc eXtra, 150mm
 Vapour barrier/PE insulating film 200mk.
 Calibrated timber 45x45mm (battens C24), c=600mm
 Forestia P4 (12x620/1220x2390)

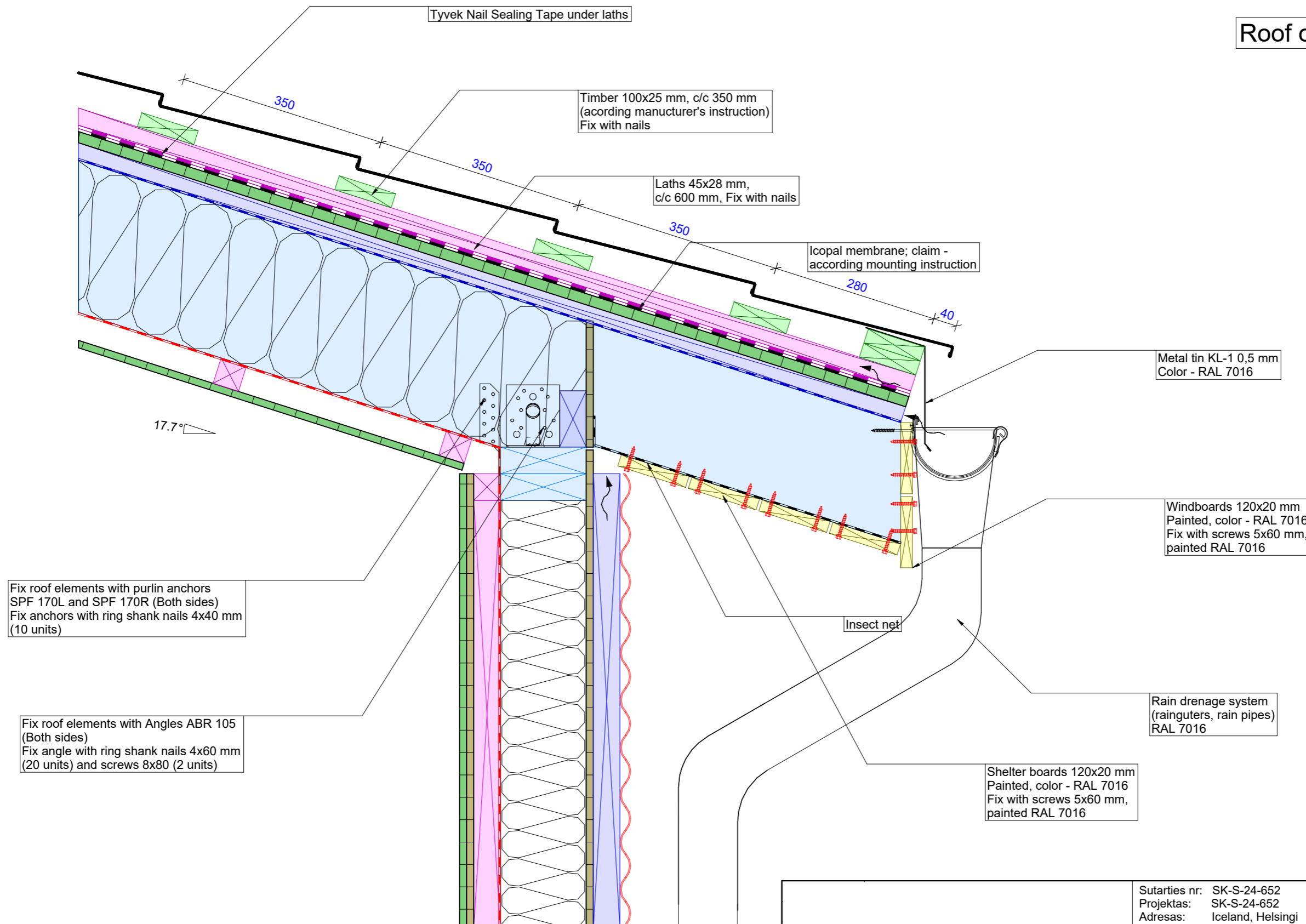
Screws M 8x180; c/c 600 mm



Metal tins for corner connection RAL 7016

		Sutarties nr: SK-S-24-652	
		Projektas: SK-S-24-652	
		Adresas: Iceland, Helsingi	
		Uzsakovas: Tekta EHF	
		M : 1 : 7	
		Plano pavad.: SK-S-24-652, Detail D	
		Laida	
		0	
Etapas			
TP		SK-S-24-652	
		Lapas	
		Lapu	

Roof on wall



Fix roof elements with purlin anchors
SPF 170L and SPF 170R (Both sides)
Fix anchors with ring shank nails 4x40 mm
(10 units)

Fix roof elements with Angles ABR 105
(Both sides)
Fix angle with ring shank nails 4x60 mm
(20 units) and screws 8x80 (2 units)

Timber 100x25 mm, c/c 350 mm
(according manufacturer's instruction)
Fix with nails

Laths 45x28 mm,
c/c 600 mm, Fix with nails

Icopal membrane; claim -
according mounting instruction

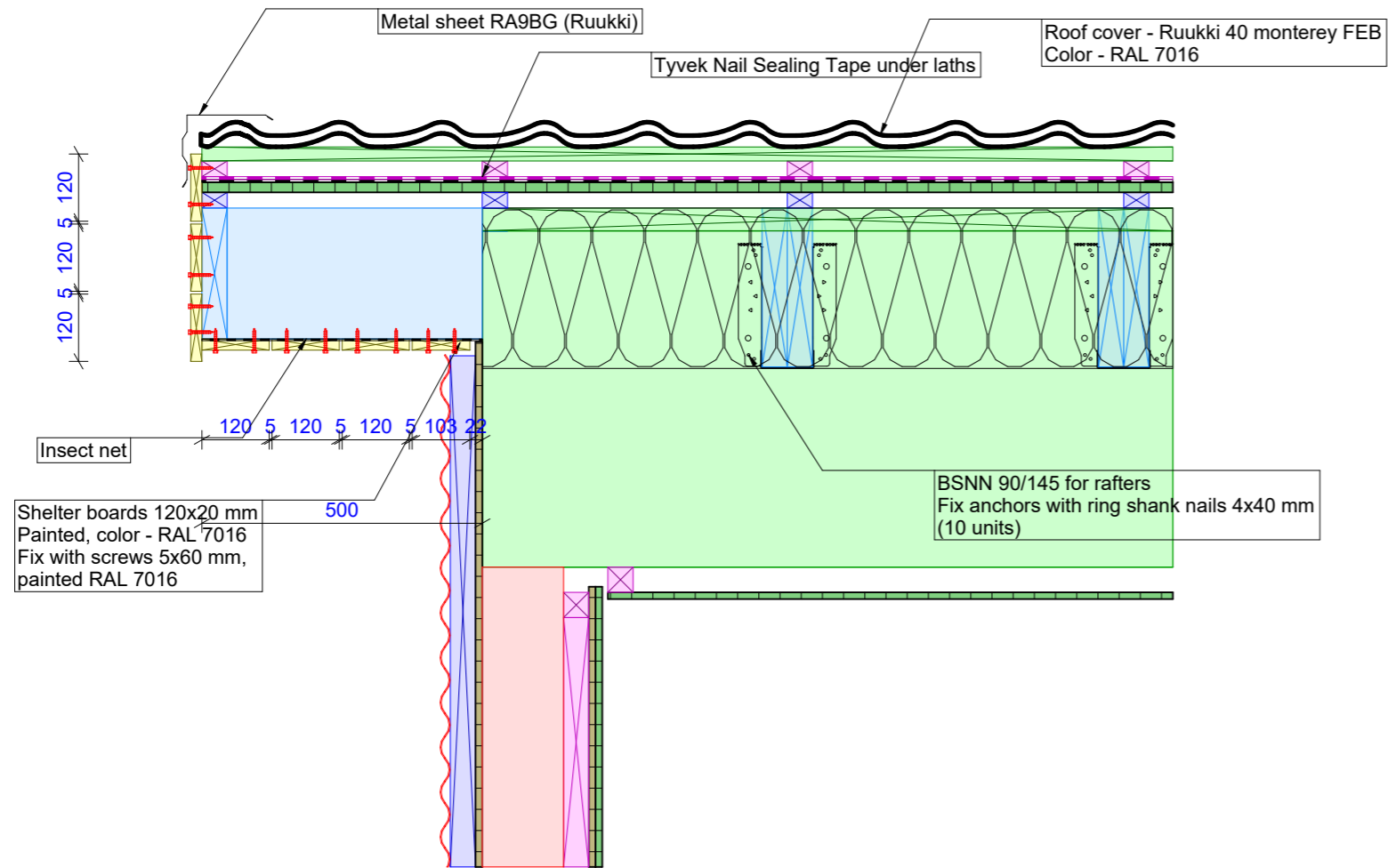
Metal tin KL-1 0,5 mm
Color - RAL 7016

Windboards 120x20 mm
Painted, color - RAL 7016
Fix with screws 5x60 mm,
painted RAL 7016

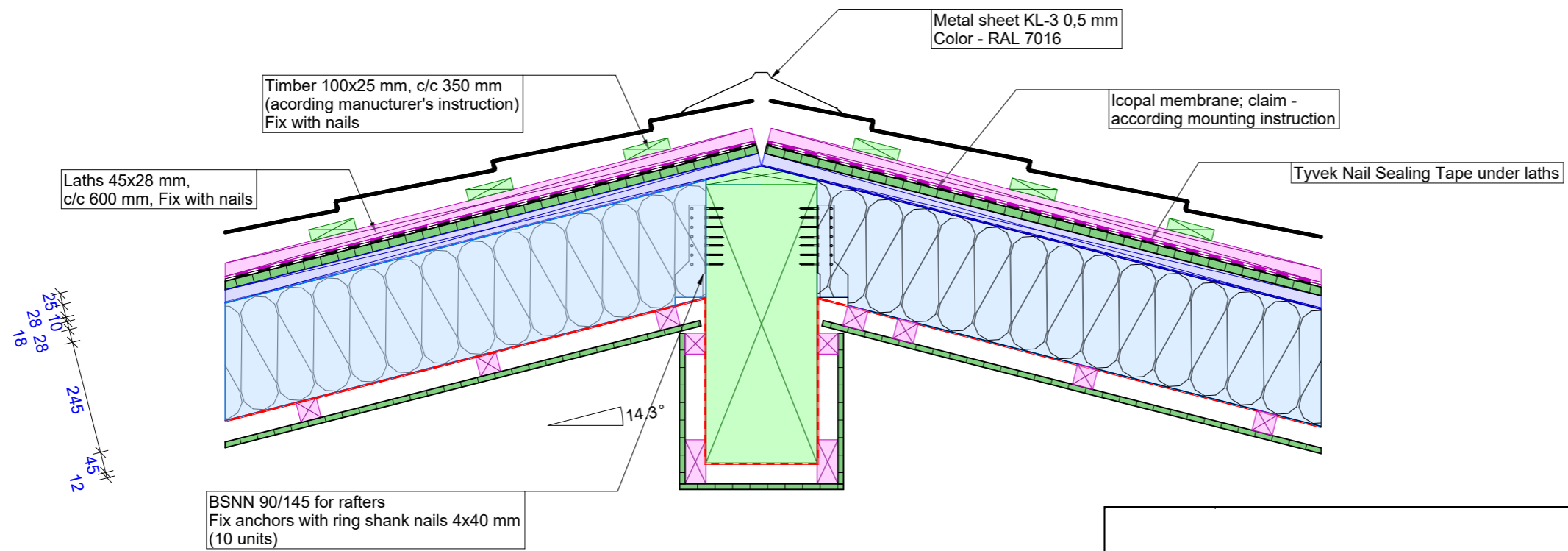
Rain drainage system
(rainguters, rain pipes)
RAL 7016

Shelter boards 120x20 mm
Painted, color - RAL 7016
Fix with screws 5x60 mm,
painted RAL 7016

		Sutarties nr: SK-S-24-652		M : 1 : 7
		Projektas: SK-S-24-652		
		Adresas: Iceland, Helsingi		
		Uzsakovas: Tekta EHF		
Etapas TP		SK-S-24-652		Laida
				0
		Lapas	Lapu	



Roof top 14 °



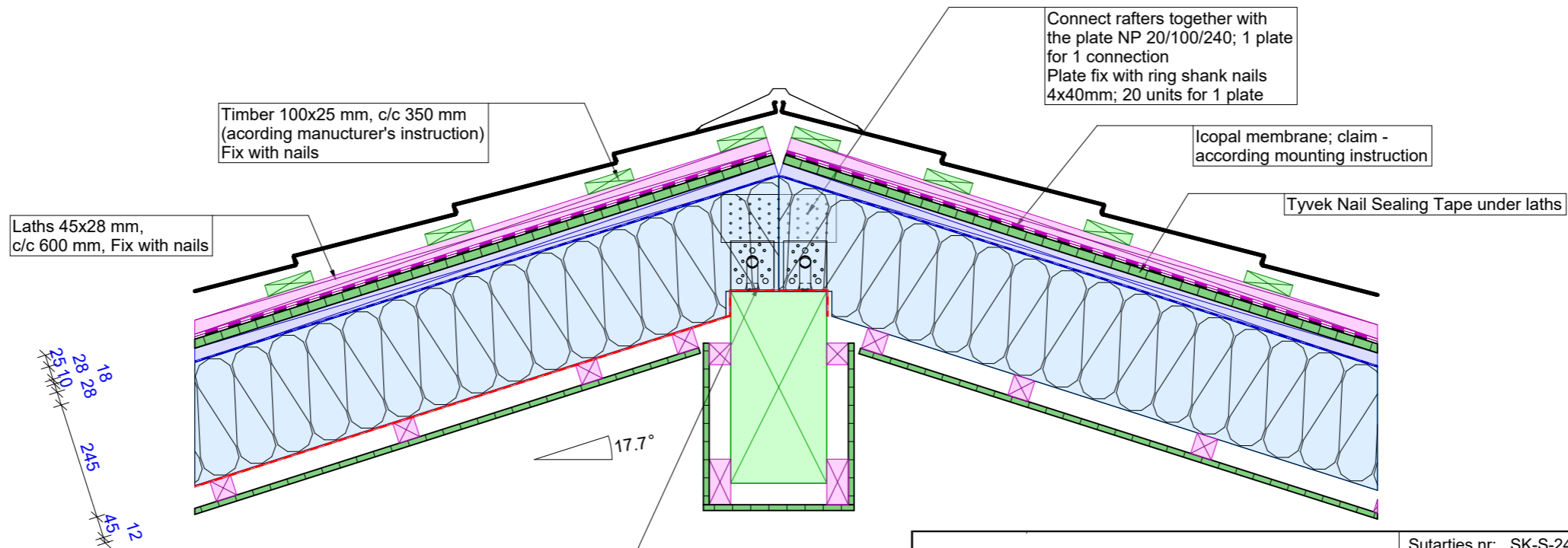
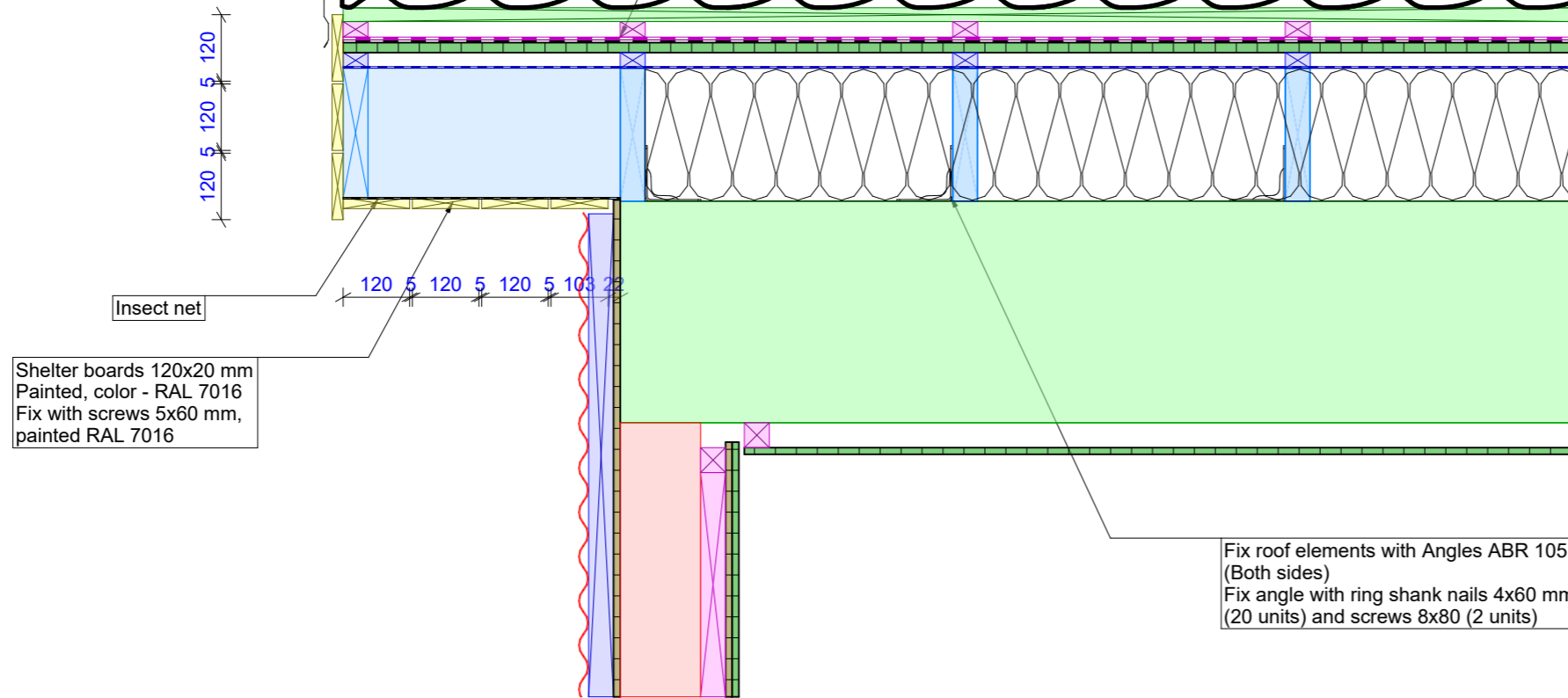
Sutarties nr: SK-S-24-652		M : 1 : 12	
Projektas: SK-S-24-652			
Adresas: Iceland, Helsingi			
Uzsakovas: Tekta EHF			
Plano pavad.: SK-S-24-652, Detail F		Laida	
		0	
Etapas	SK-S-24-652	Lapas	Lapu
TP			

Metal sheet RA9BG (Ruukki)

Tyvek Nail Sealing Tape under laths

Roof cover - Ruukki 40 monterey FEB
Color - RAL 7016

Roof top 18°

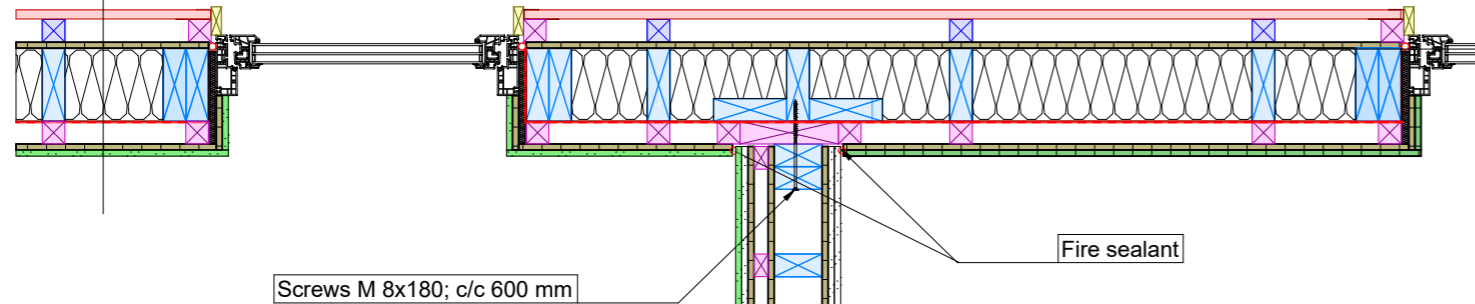


Fix roof elements with Angles ABR 105
(Both sides)
Fix angle with ring shank nails 4x60 mm
(20 units) and screws 8x80 (2 units)

Etapas TP		SK-S-24-652	Sutarties nr: SK-S-24-652 Projektas: SK-S-24-652 Adresas: Iceland, Helsingi Uzsakovas: Tekta EHF		M : 1 : 12
			Plano pavad.: SK-S-24-652, Detail G		Laida 0
			Lapas	Lapu	

Fire wall with outside wall

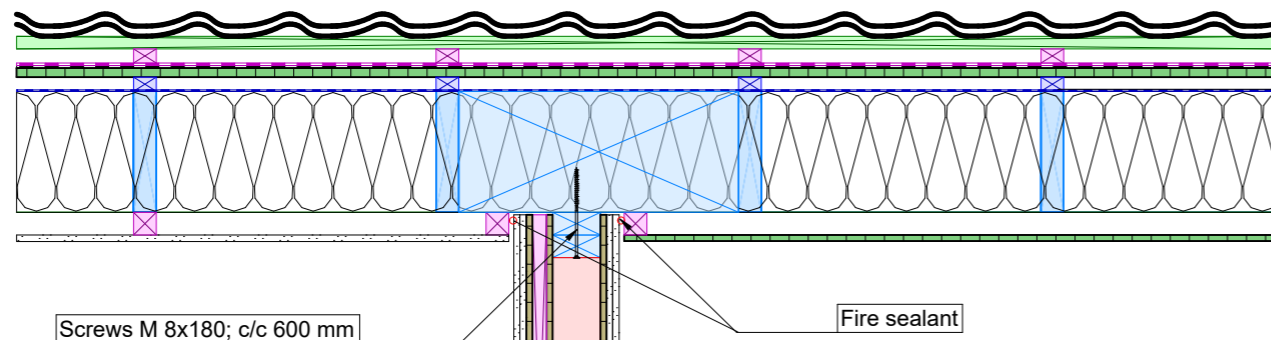
Outside wall garage
 Profiled sheet S18-92W-1100 0,50mm, RAL 7038
 Vertical calibrated timber battens 45x45mm, c=600mm
 Mouse guard
 OSB -3 SE board 12mm
 Calibrated timber 45x145mm (studs C24), c=600mm
 Mineral insulation Paroc eXtra, 150mm
 Vapour barrier/PE insulating film 200mk.
 Calibrated timber 45x45mm (battens C24), c=600mm
 Norgips 12,5mm (green in bathroom)



Outside wall
 Profiled sheet S18-92W-1100 0,50mm, RAL 7038
 Vertical calibrated timber battens 45x45mm, c=600mm
 Mouse guard
 OSB -3 SE board 12mm
 Calibrated timber 45x145mm (studs C24), c=600mm
 Mineral insulation Paroc eXtra, 150mm
 Vapour barrier/PE insulating film 200mk.
 Calibrated timber 45x45mm (battens C24), c=600mm
 Forestia P4 (12x620/1220x2390)

Wall with garage (Firewall)
 Norgips 12,5mm (green in bathroom)
 Norgips 12,5mm
 OSB -3 SE board 12mm
 Calibrated timber 45x28mm (studs C24), c=600mm
 Norgips 12,5mm
 Calibrated timber 45x95mm (studs C24), c=600mm
 Mineral insulation Paroc eXtra, 100mm
 OSB -3 SE board 12mm
 Norgips 12,5mm
 Norgips 12,5mm

Fire wall with Roof



Roof cover: Ruukki 40 Monterey FEB
 25x100mm cc-350mm
 28x45mm cc-600mm
 Icopal membrane
 OSB -3 SE board 18mm
 Diffusion membrane TYVEK Pro
 Rafters 45x245mm (C24), c=600mm
 Mineral insulation Paroc eXtra, 220mm
 Vapour barrier/PE insulating film 200mk.
 Calibrated timber 45x45mm (cross battens), c=600mm
 Forestia P4 12mm (norgips 12,5 in garage)

Wall with garage (Firewall)
 Norgips 12,5mm (green in bathroom)
 Norgips 12,5mm
 OSB -3 SE board 12mm
 Calibrated timber 45x28mm (studs C24), c=600mm
 Norgips 12,5mm
 Calibrated timber 45x95mm (studs C24), c=600mm
 Mineral insulation Paroc eXtra, 100mm
 OSB -3 SE board 12mm
 Norgips 12,5mm
 Norgips 12,5mm

Sutarties nr: SK-S-24-652
 Projektas: SK-S-24-652
 Adresas: Iceland, Helsingi
 Uzsakovas: Tekta EHF

M : 1 : 15

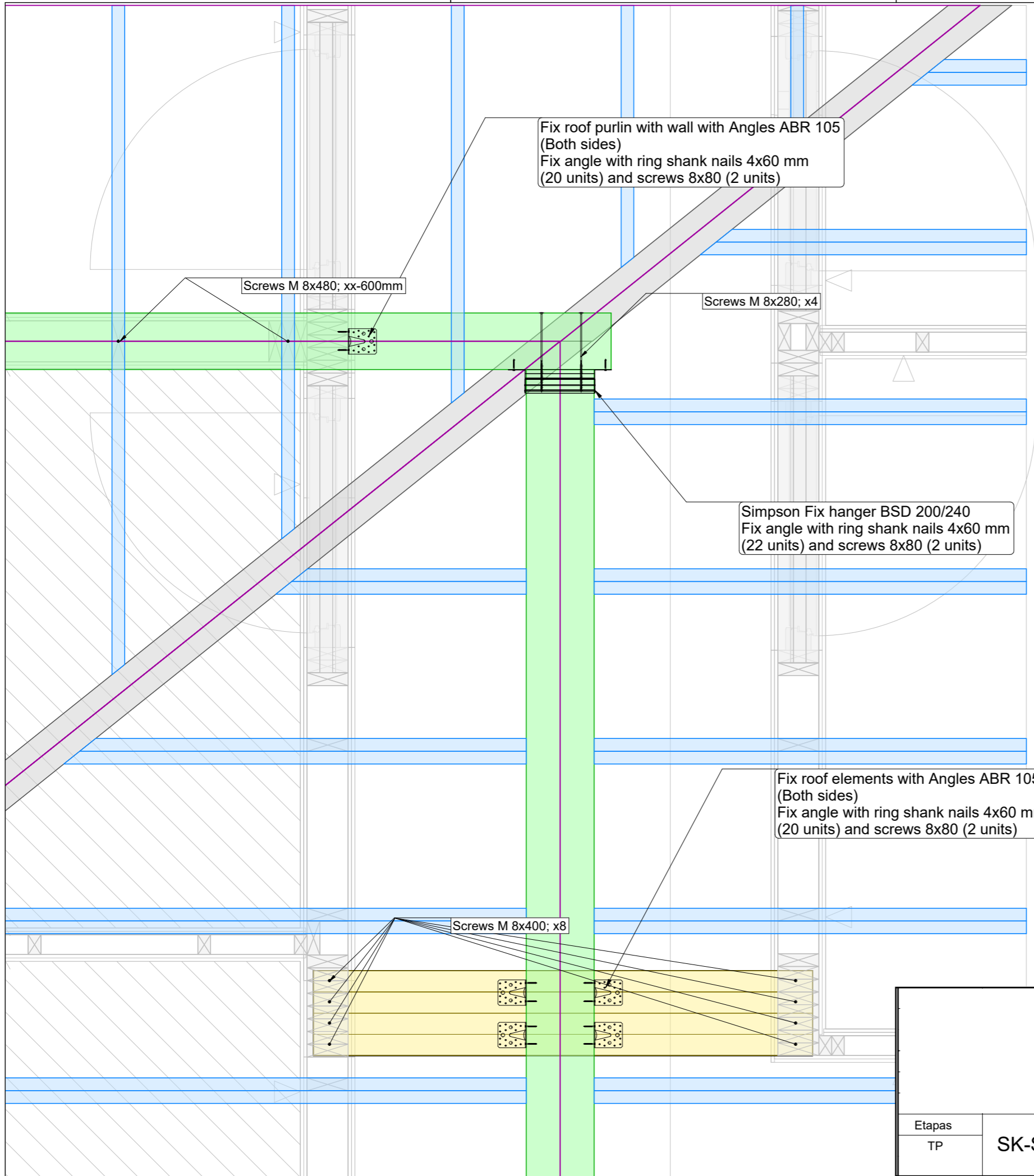
Plano pavad.:
SK-S-24-652, Detail H

Laida

0

Etapas	TP	SK-S-24-652	Lapas	Lapu

Purlin conection



Fix roof purlin with wall with Angles ABR 105 (Both sides)
Fix angle with ring shank nails 4x60 mm (20 units) and screws 8x80 (2 units)

Screws M 8x480; xx-600mm

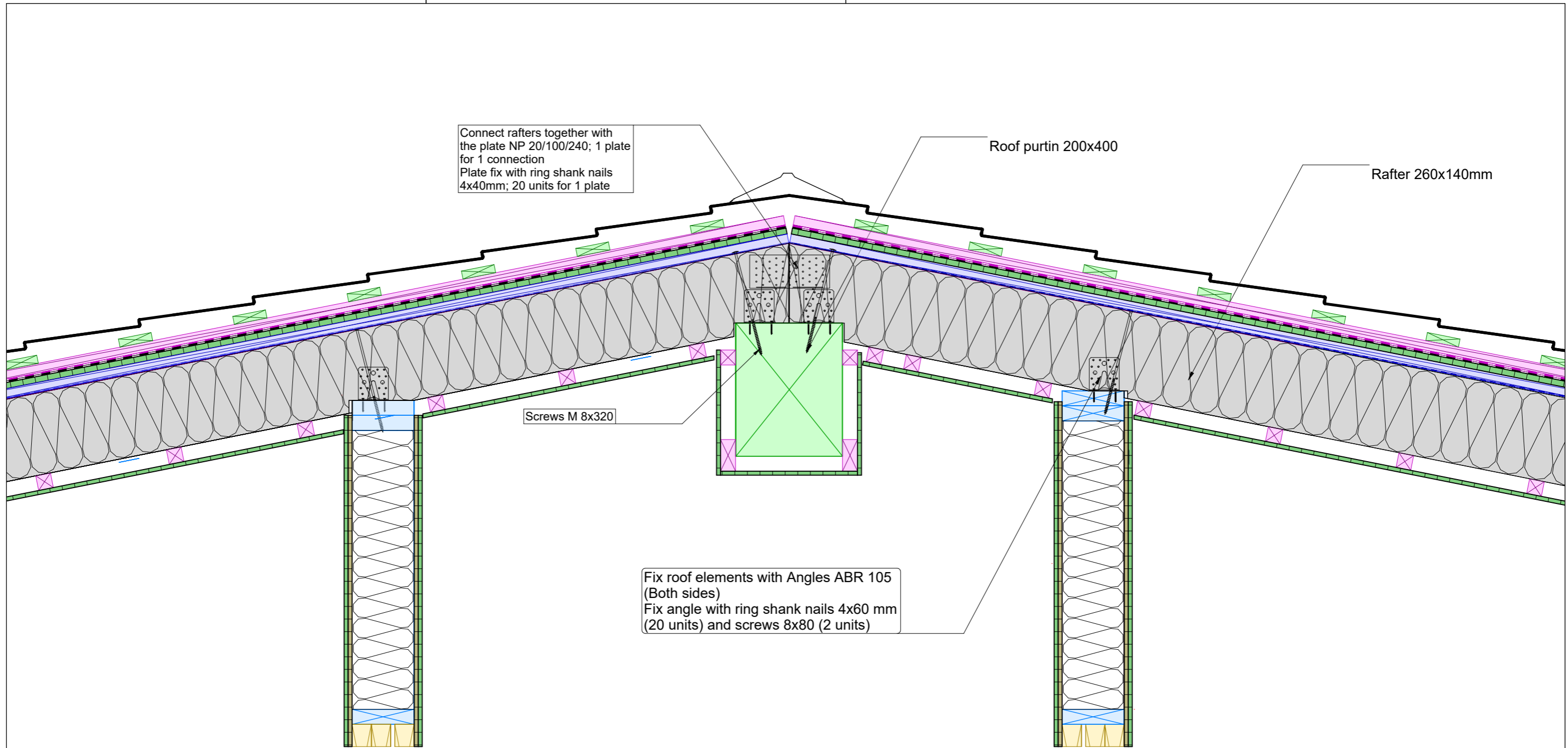
Screws M 8x280; x4

Simpson Fix hanger BSD 200/240
Fix angle with ring shank nails 4x60 mm (22 units) and screws 8x80 (2 units)

Fix roof elements with Angles ABR 105 (Both sides)
Fix angle with ring shank nails 4x60 mm (20 units) and screws 8x80 (2 units)

Screws M 8x400; x8

Etapas TP		SK-S-24-652	Sutarties nr: SK-S-24-652 Projektas: SK-S-24-652 Adresas: Iceland, Helsingi Uzsakovas: Tekta EHF		M : 1 : 15
			Plano pavad.: SK-S-24-652, Detail I		Laida 0
			Lapas	Lapu	



		Sutarties nr: SK-S-24-652	
		Projektas: SK-S-24-652	
		Adresas: Iceland, Helsingi	
		Uzasakovas: Tekta EHF	
		M : 1 : 12	
		Plano pavad.:	
		SK-S-24-652, Detail J	
		Laida	
		0	
Etapas	SK-S-24-652	Lapas	Lapu
TP			