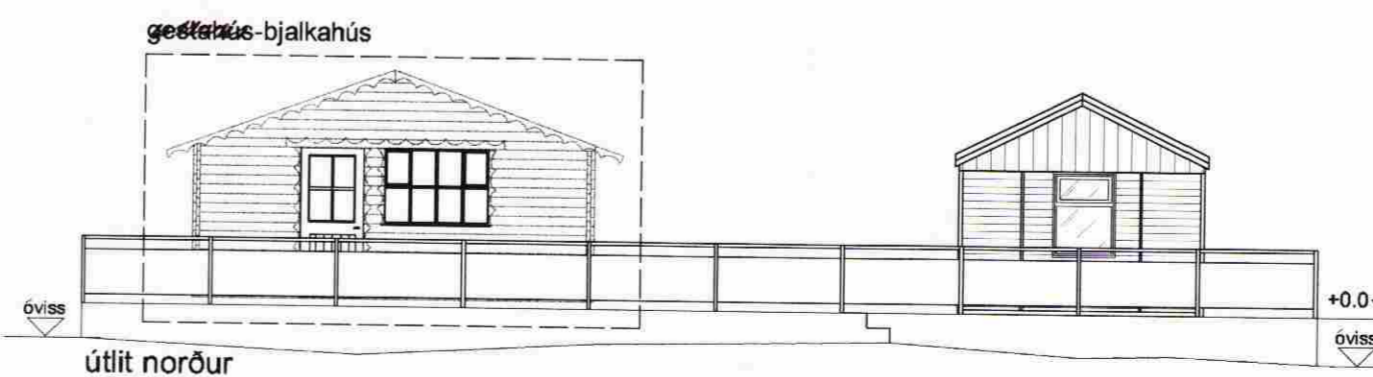
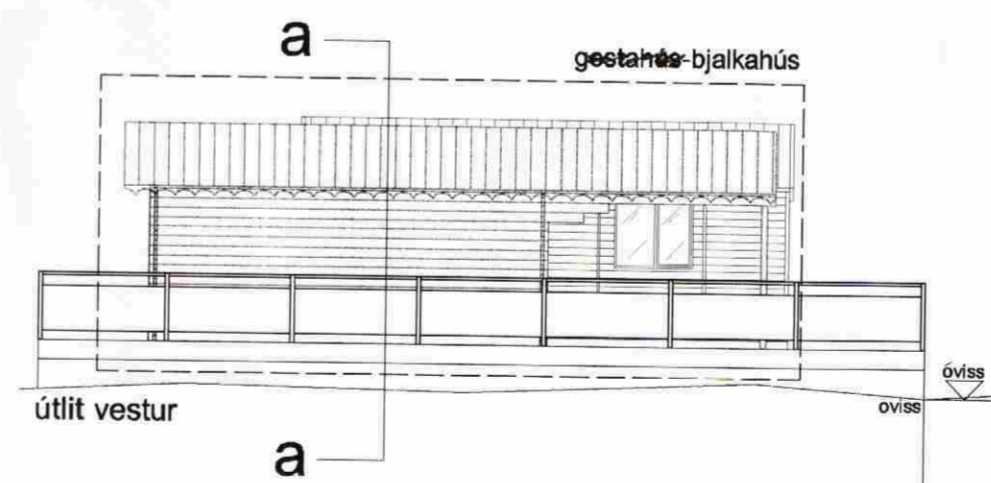
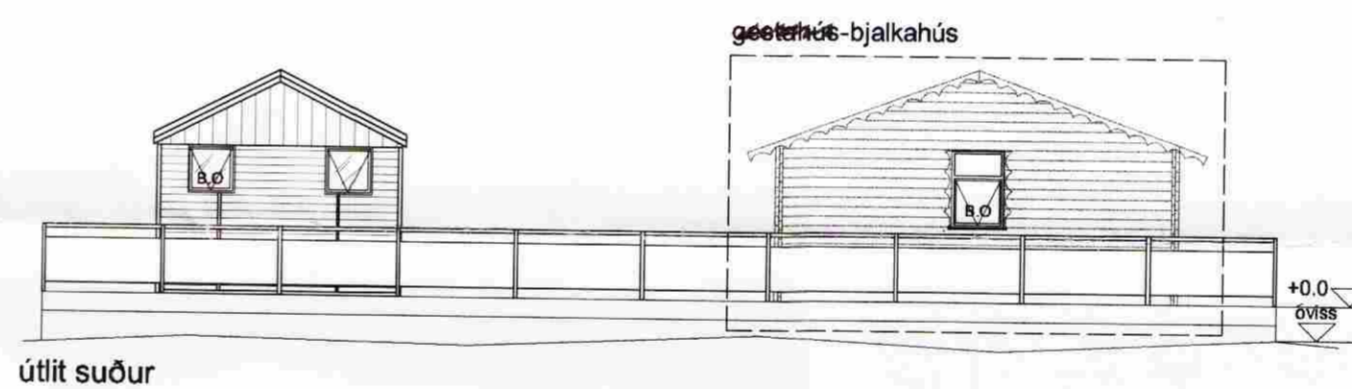
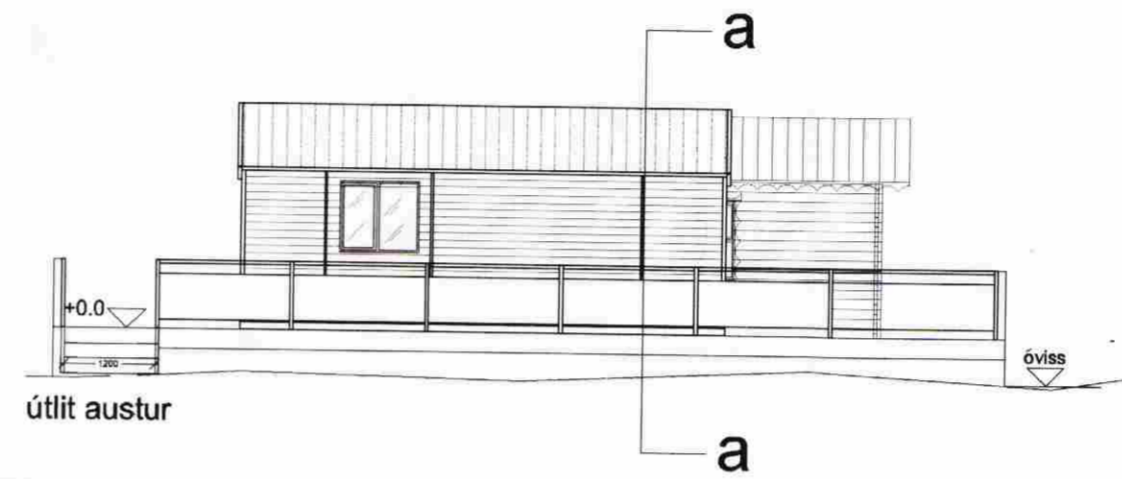
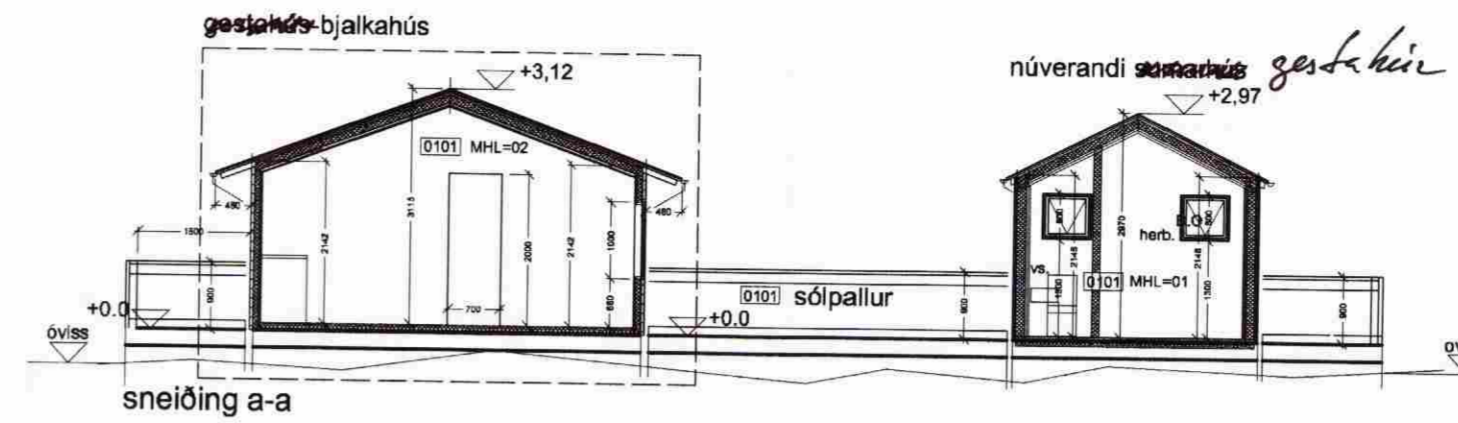
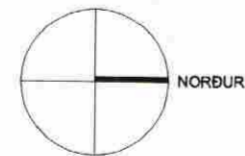


grunnmynd 1h. gestahús,  
sólipallur og 1h. núverandi  
sumarhús



Samþykkt  
29. AUG. 2006  
Hilmar Einarsson  
Byggingarfulltrúi uppsveita Árnessýsla

TEIKNISTOFAN  
UPP Á LOFTI

HANS UNNÞÓR ÓLASON innanhúsarkitekt  
DRANGAHRAUNI 8  
220 HAFNARFJÓRÐUR  
Sími 565 1525 gsm 898 2608  
Fax: 565 1520  
tul @mmedia.is

Unnið í samvinnu við

○ sægermur arkitektar hafnarfjórður

arkitekt:

Marteinn Huntingdon-Williams, RIBA;FAI  
kt:130755-8019 Brattholti 01-01 220 Hfj  
gsm: 869 7354  
huntingdonwilliams@hotmail.com

Hallkellsholar  
Grimsnes og Grafningarhr.  
Lækjalundur nr.70

-Breytingar við núverandi sumarhús  
fyrir Elín og Þórður

Aðalteikningar

Dags. 21.08.2006

Verknr.

Teiknnr. 01-02

Efni. sneiðing a-a,  
útlit norður, austur, suður og  
vestur

Mkv. 1:500/1:100

Teiknað. HLH