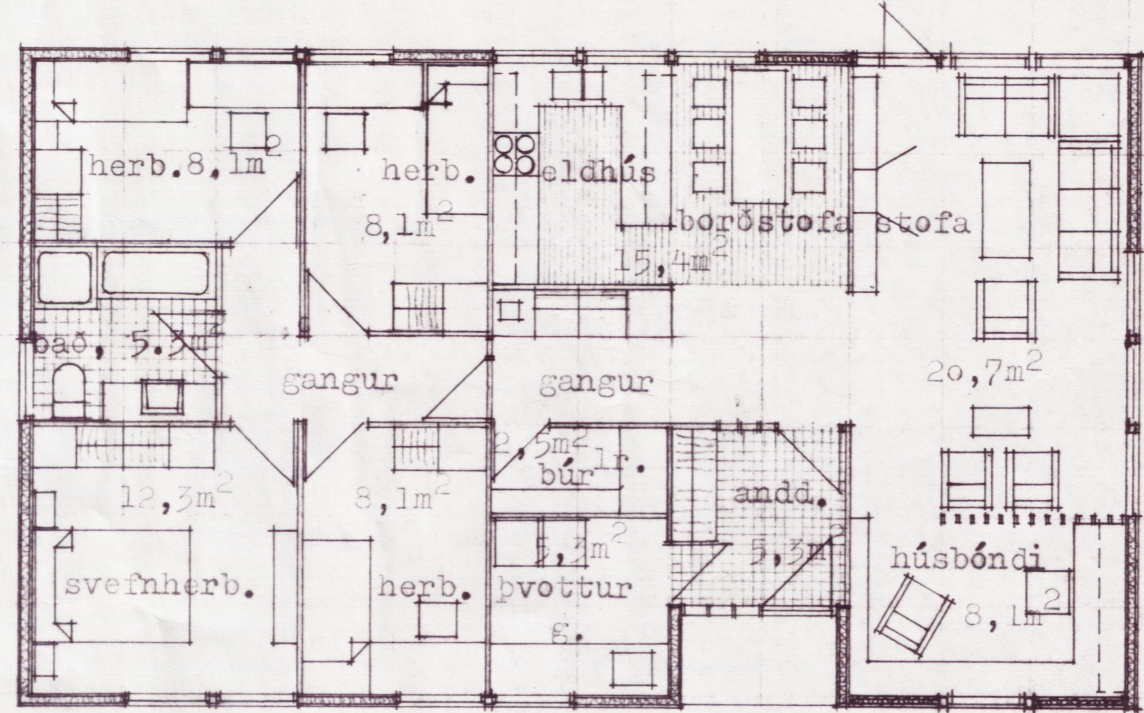


15 120 120 120 120 120 120 120 120 120 120 120 120 120 15

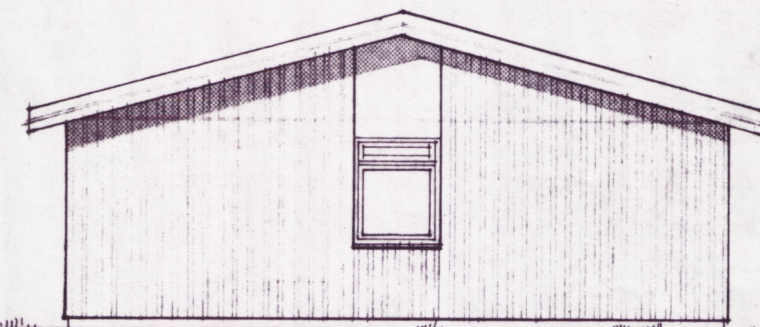


870 210 390 1470

15 120 120 120 120 120 120 120 120 120 120 120 120 15

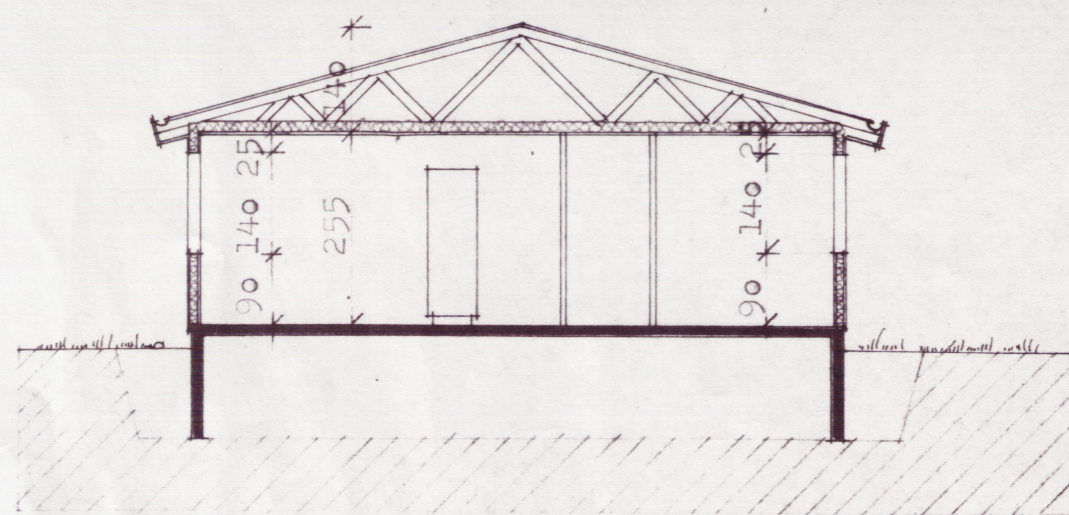


norðaustur

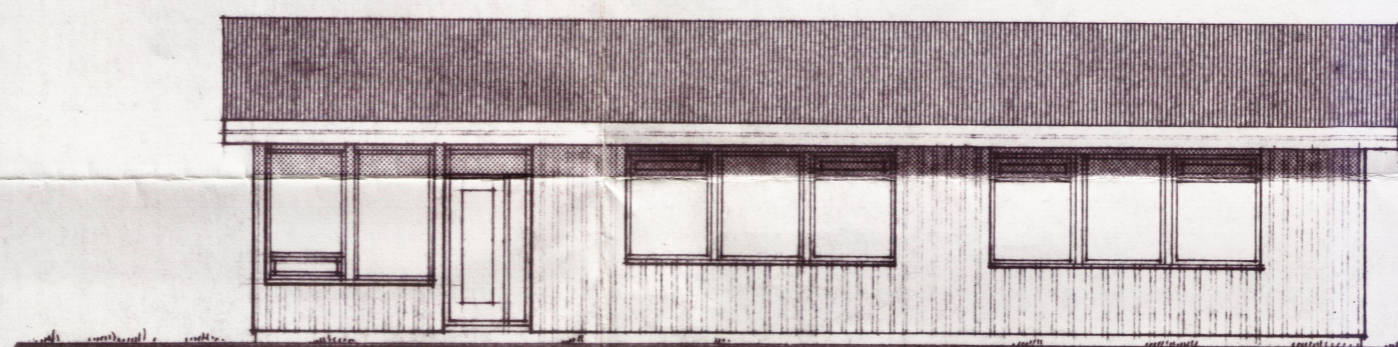


suðaustur

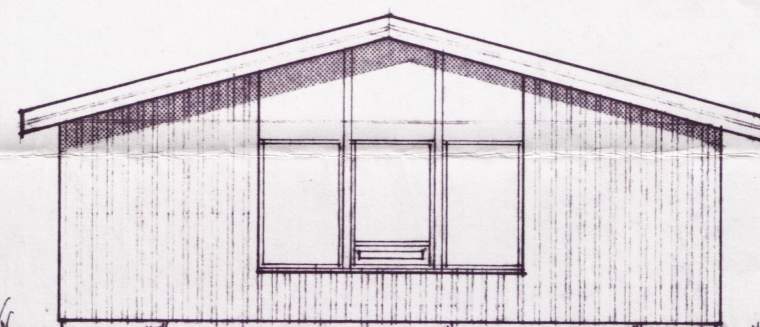
grunnmynd



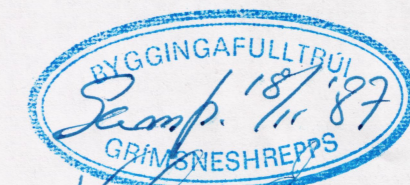
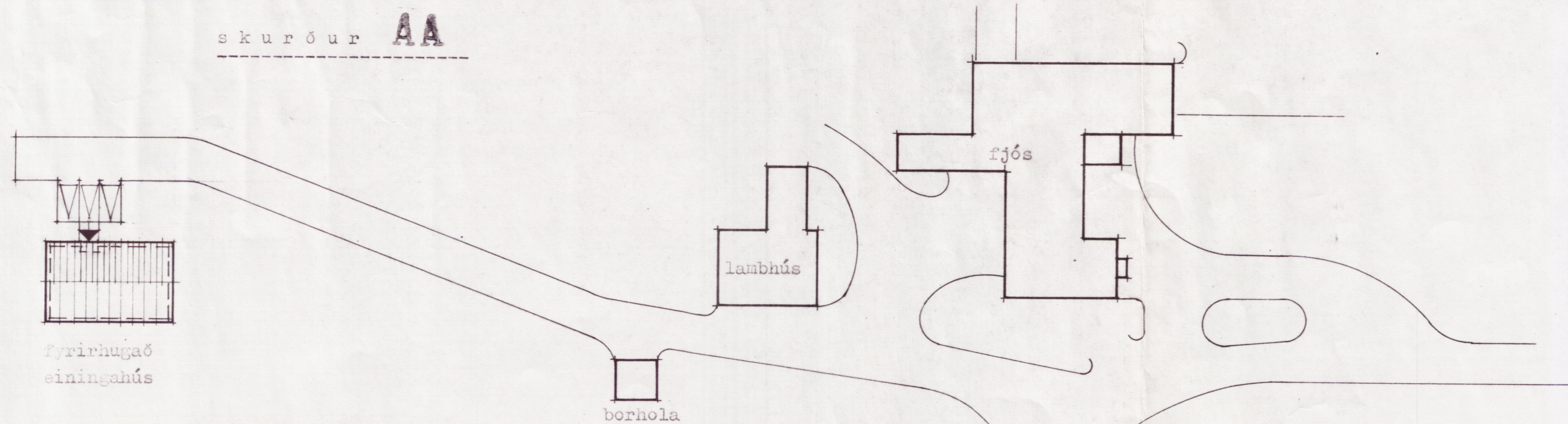
skurður AA



suðvestur



norðvestur



Grímur Þorsteinsson

Afnot af teikningu þessari óheimil án leyfis

Flatarmál húss: 125.4 m<sup>2</sup>  
Rúmmál húss: 421.2 m<sup>3</sup>

Heðarendi, Grímnesi  
grunnmynd, útlit og snið

B 1

**TEIKNISTOFA**  
KARL-ERIKS ROCKSÉN ARKITEKTS  
SKIPHOLTÍ 1 - REYKJAVÍK - Sími 25240

KVARDI 1:100/500  
DAGS. 18. 87  
TEIKN. ásm  
YFIRF.