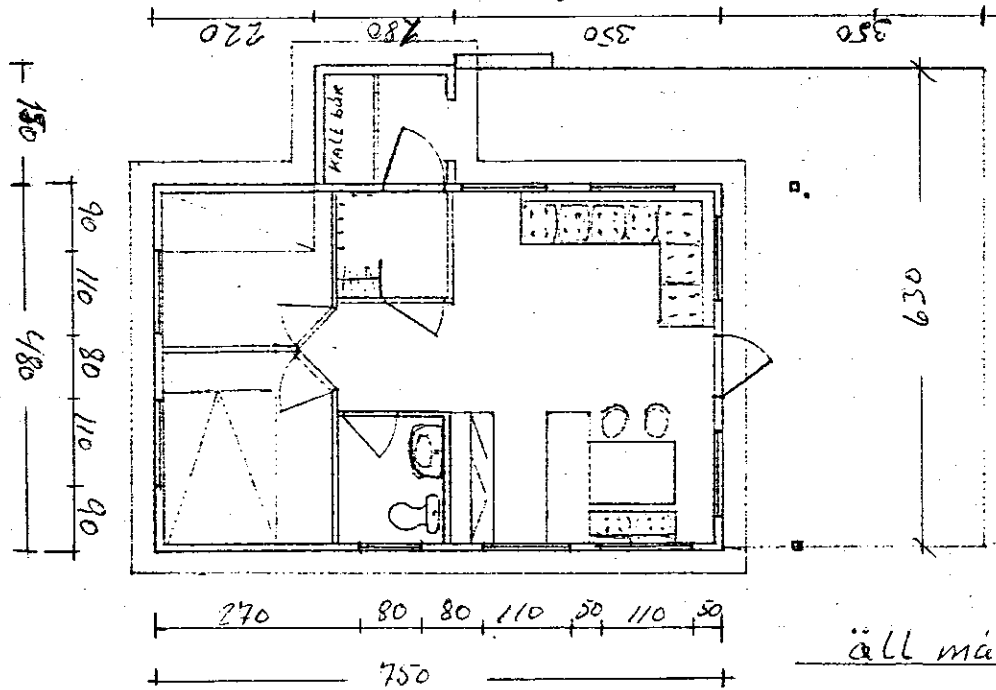
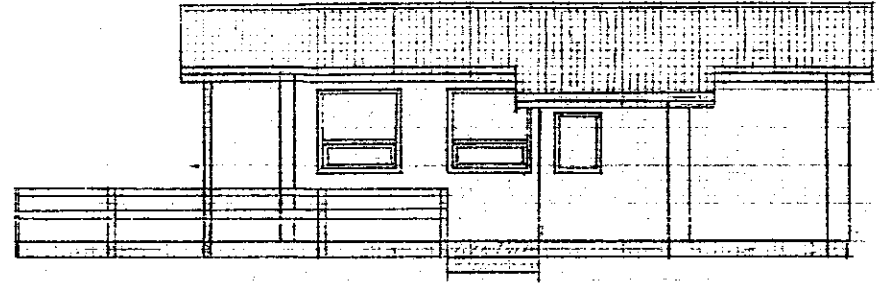
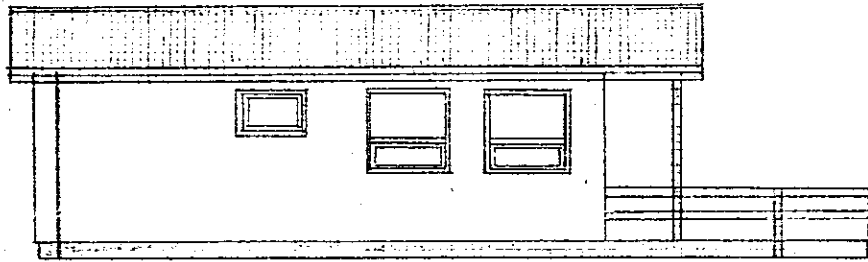


Sumariús á Læð 1 við Heiðatjörn Bilsdællslandi

Samp. 12/16 89

Hilmar Ólafsson

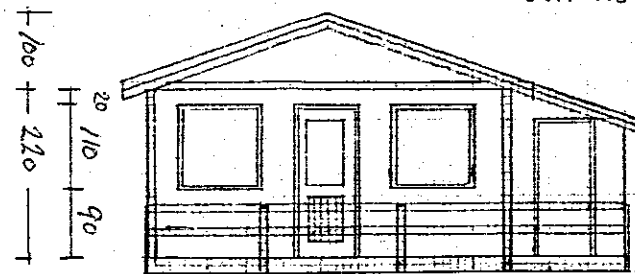


Flotarmál á sölvaelli 27.3 m²

brúttóflötue húss 36 m²

— // — forstofu 2.8 m²

samtals 38.8



öll mál í cm.

Selfossi 29/2 1988

MK 1:100

Suvarar ísaldimarsson