

Löd.
5000.0 m²
Mbl. 01+02

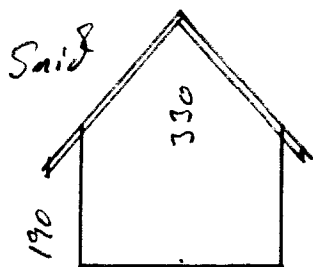
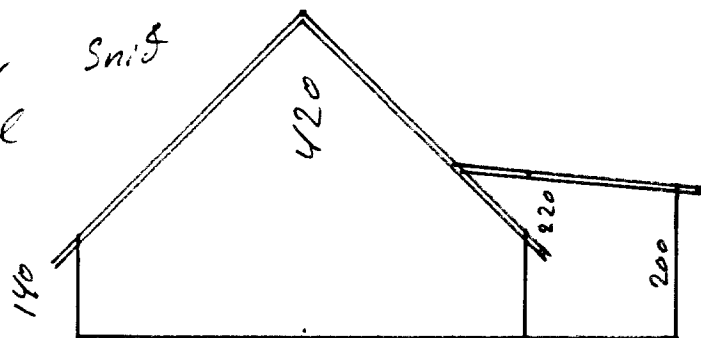
Gaßlaugen Ragnar Nilson
Härrum
Grimsneskt.

280632-2019
4530-0290
8713

Sumarkids iis Simbrsi, byggt 1975, stakkið 1992
Ceymsla, byggt 1996

01 = 59.2 m²
2.7 m hæð
160.0 m³
33.2 m ummál
27.5 m² verönd

02 = 7.4 m²
2.6 m hæð
19.0 m³
10.9 m ummál



270

