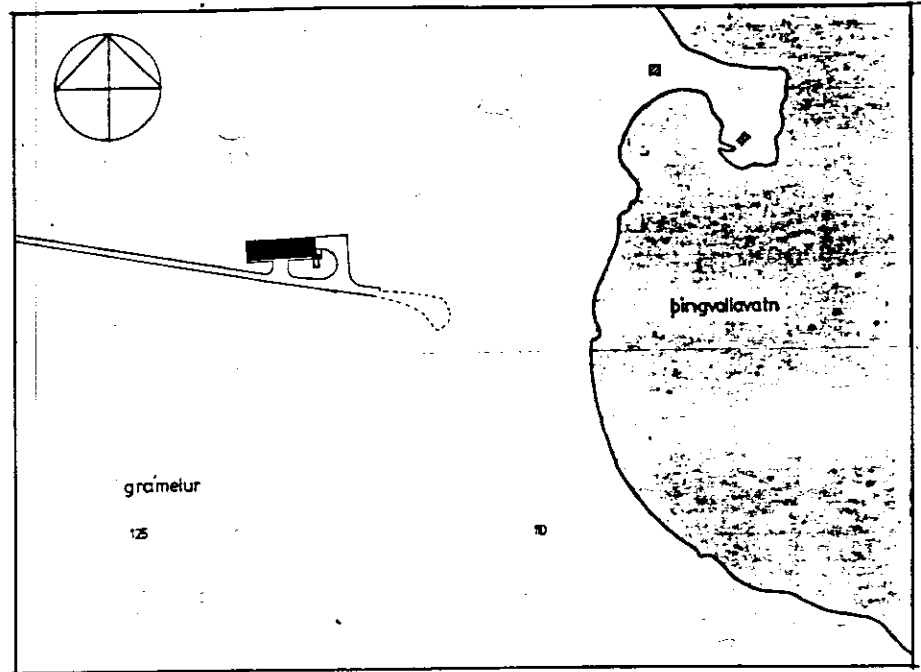
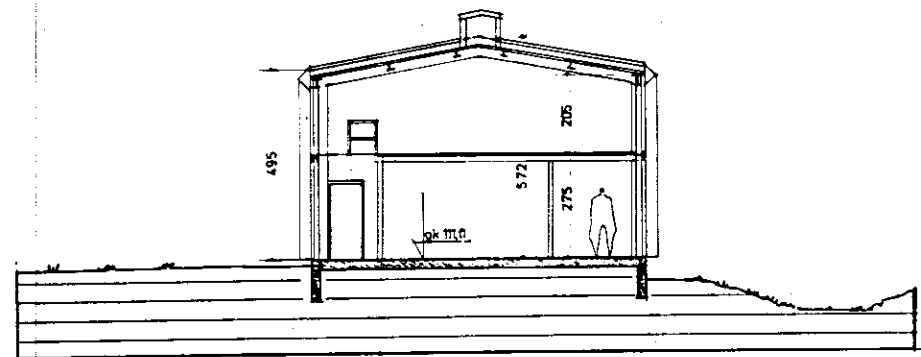


Samp. 8/12 '92  
 AFNINGSREIÐS

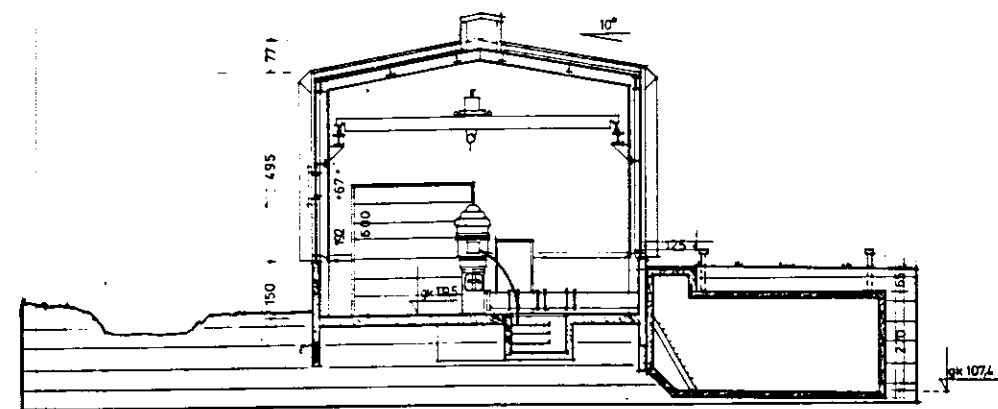
Thomas Linasson



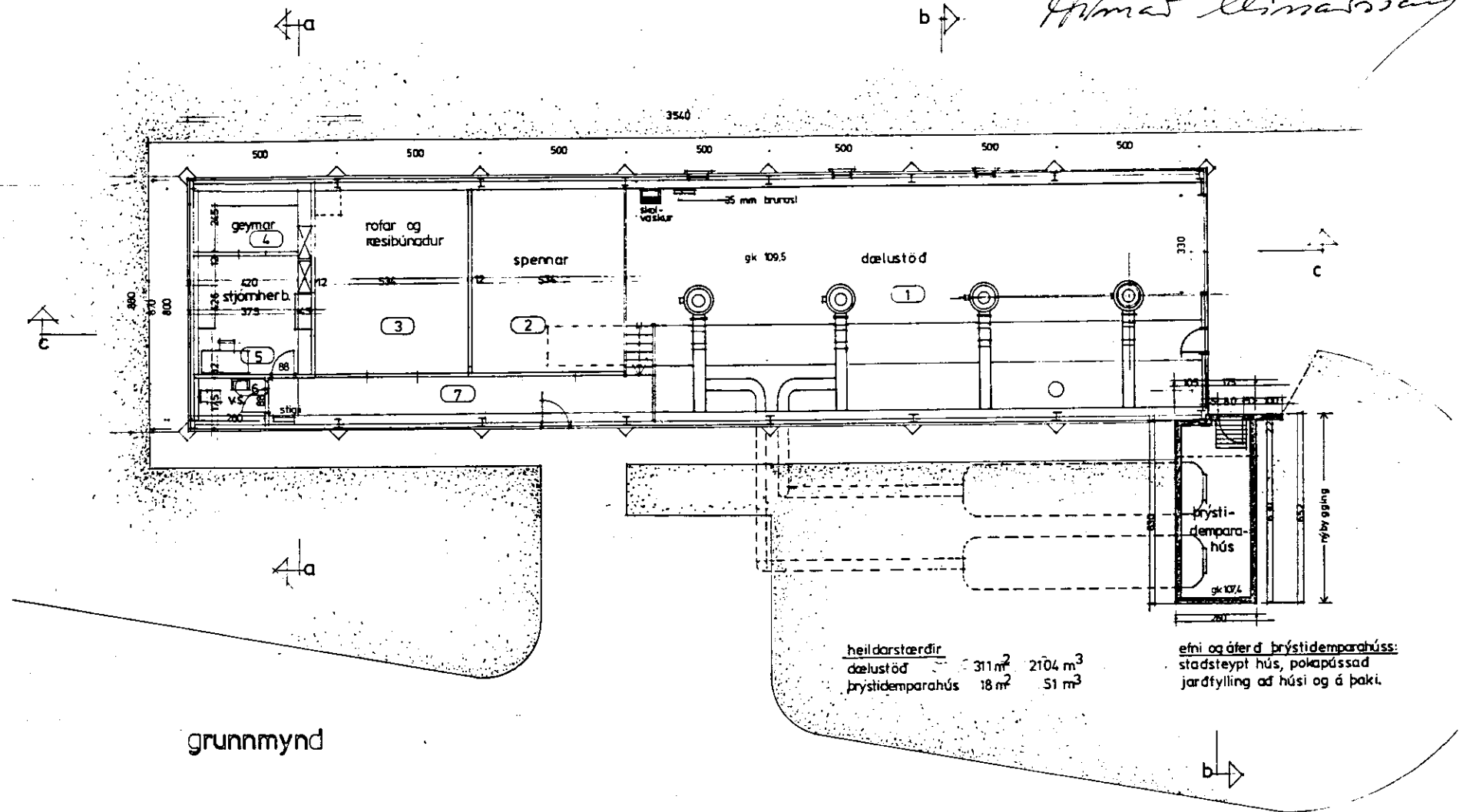
afstöðumynd m.k.v. 1:2000



sneiding a-a



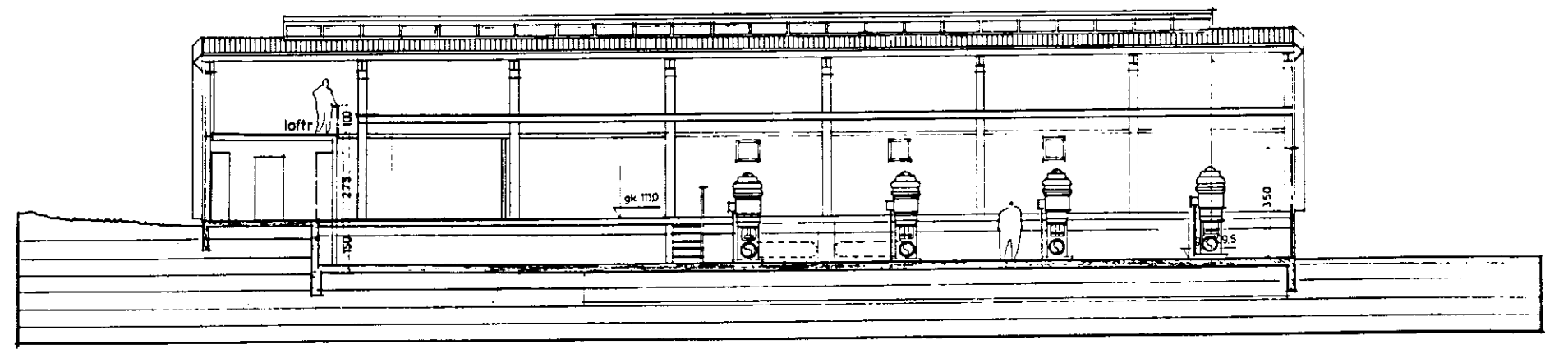
sneiding b-b



grunnmynd

heildarstærðir		
dælustöð	311 m <sup>2</sup>	2104 m <sup>3</sup>
brýstidemparahús	18 m <sup>2</sup>	51 m <sup>3</sup>

efni og áferð brýstidemparahúss:  
 stáðsteypt hús, pokapússað  
 jarðfylling að húsi og á þaki.



sneiding c-c

**TEIKNISTOFAN H.F. ÁRMÚLA 6**

hitaveita reykjavíkur nesjavellir  
 dælustöð við grámel, brýstidemparahús  
 afstöðumynd  
 grunnmynd og sneidingar 2-38-0701

1:100, 1:2000 05.05.'92 JR / isc