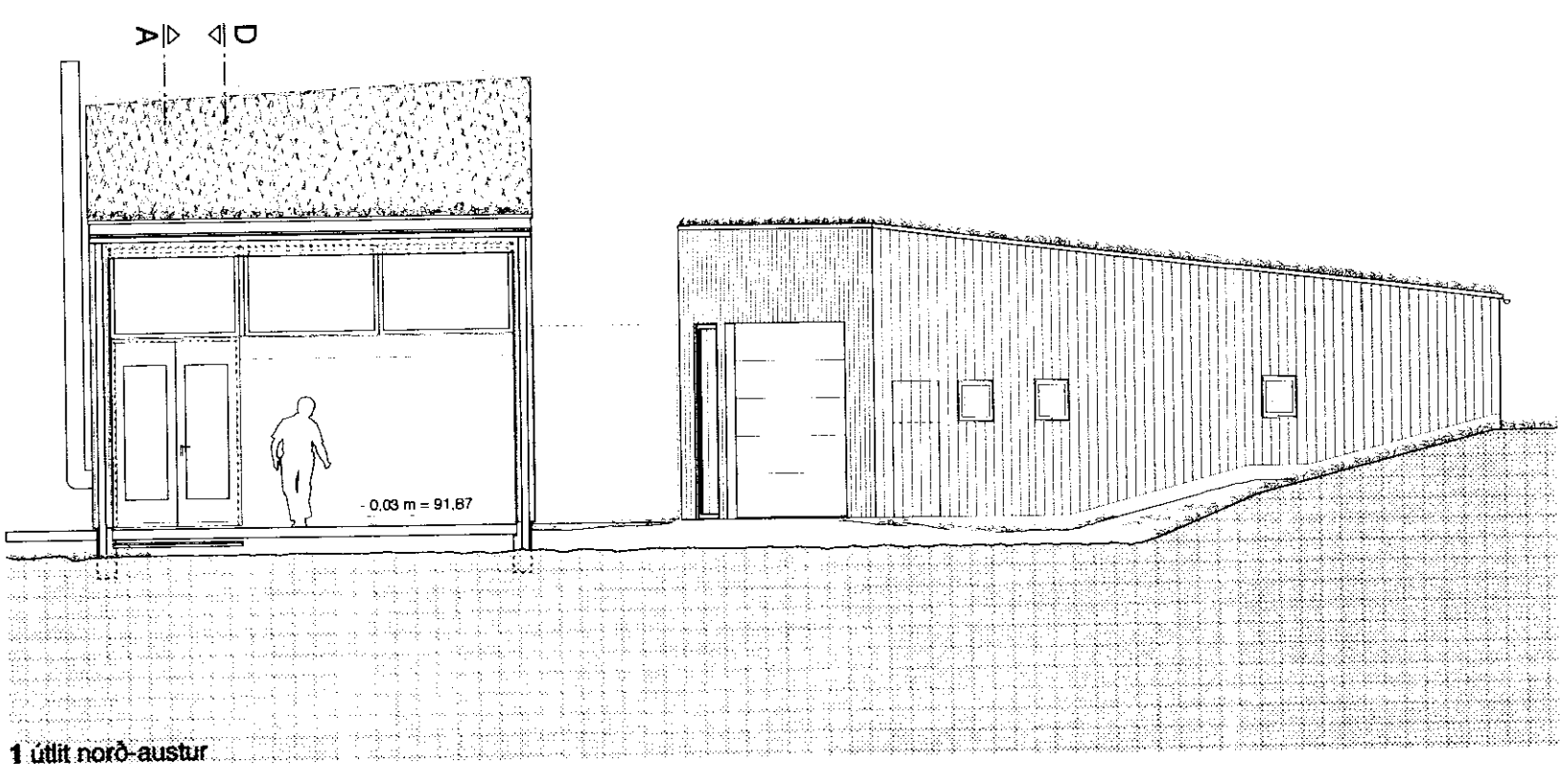
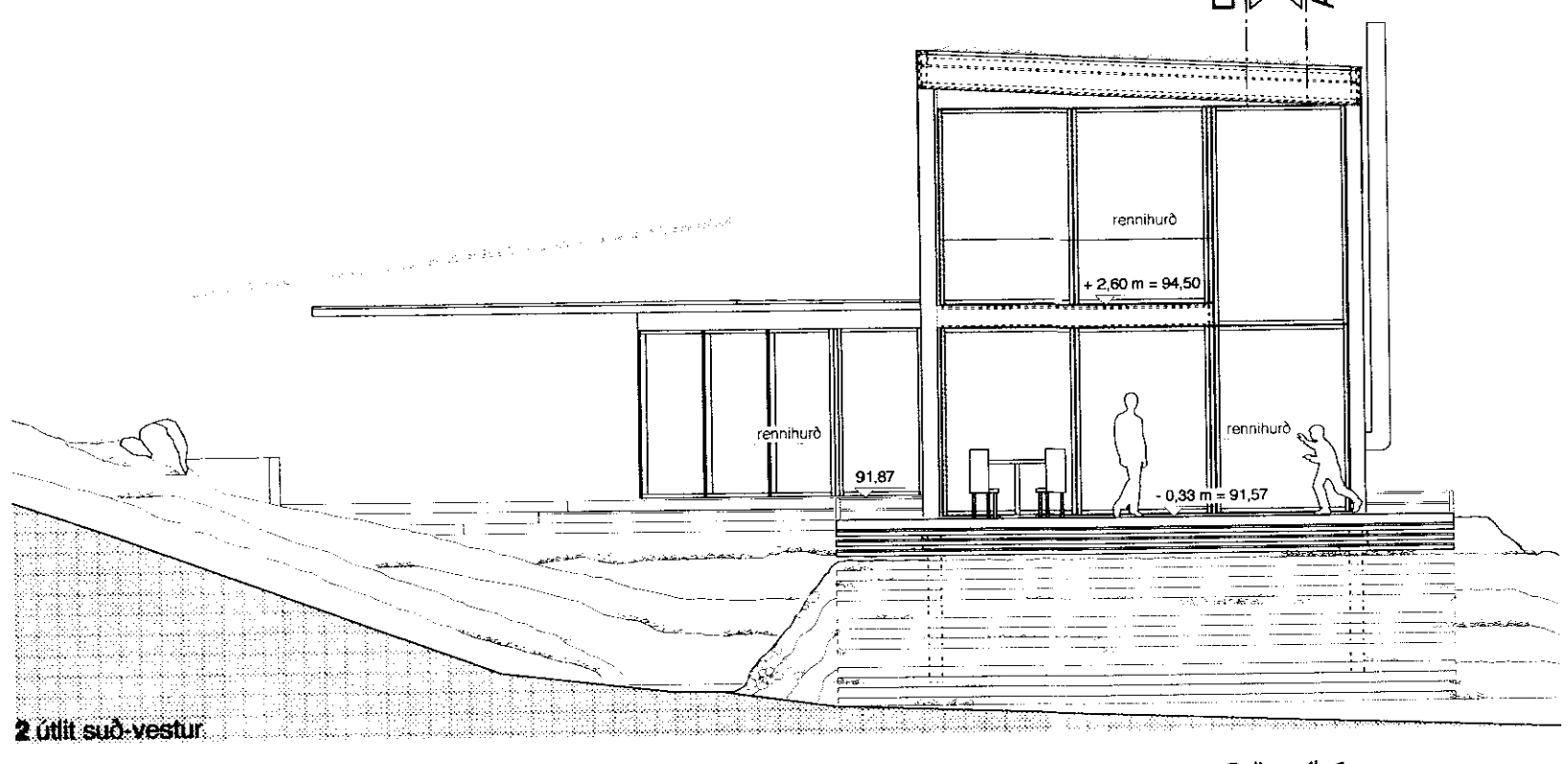


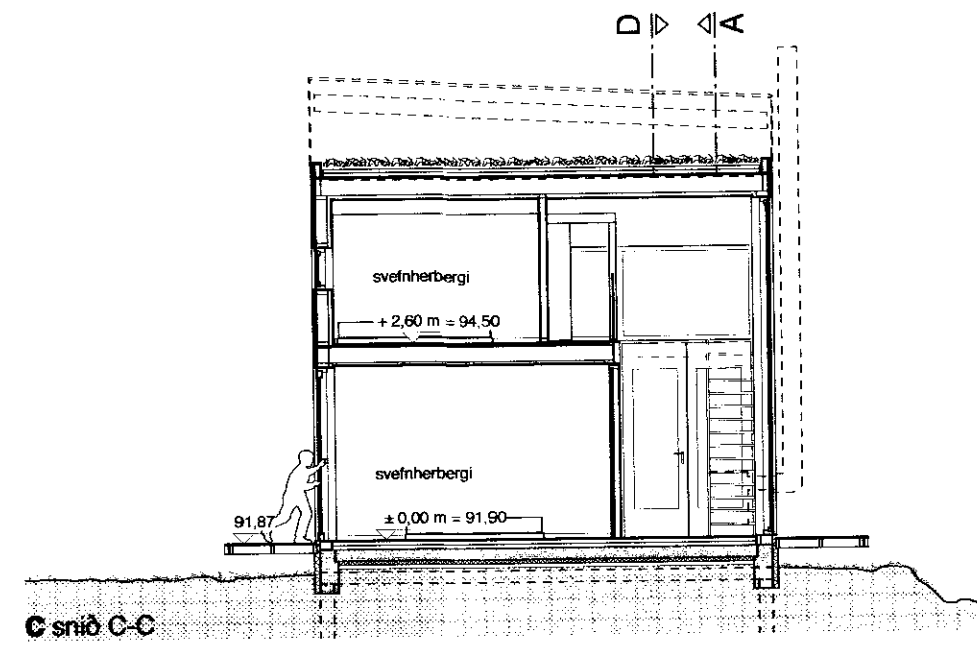
Stapi 4



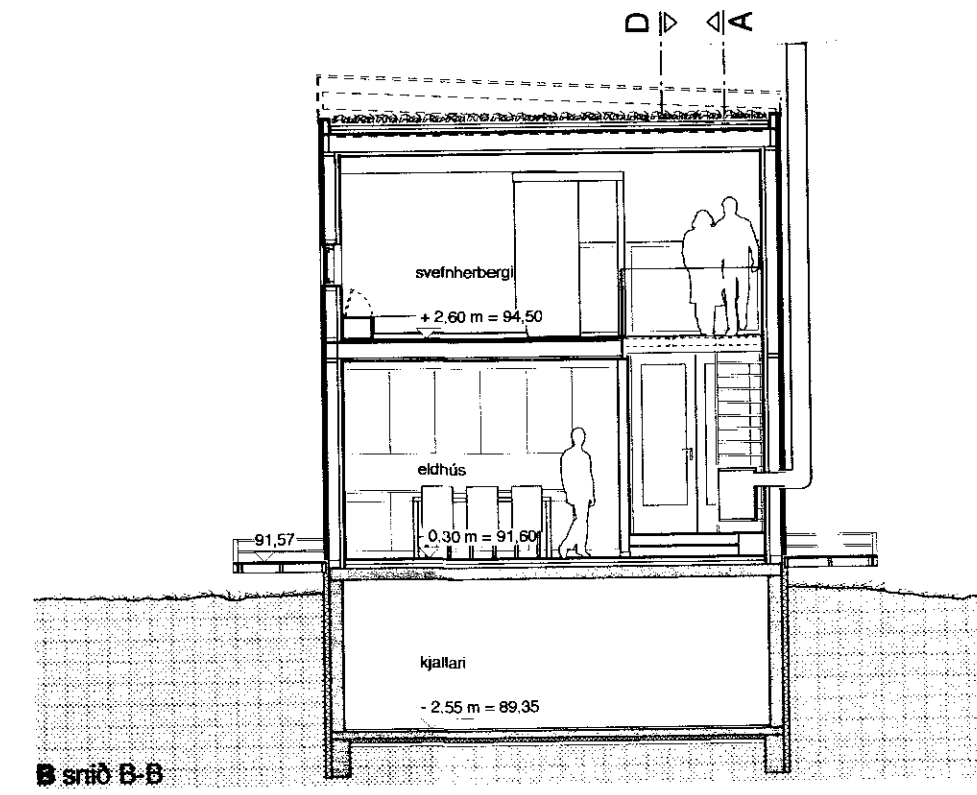
1 útlit norð-austur



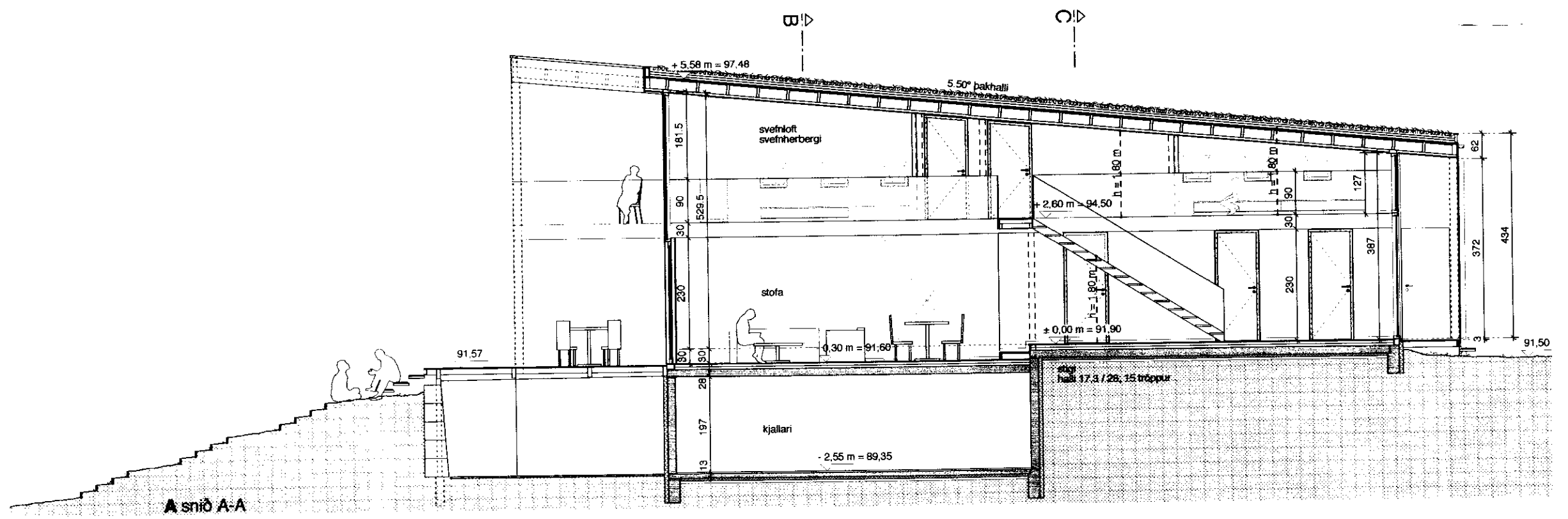
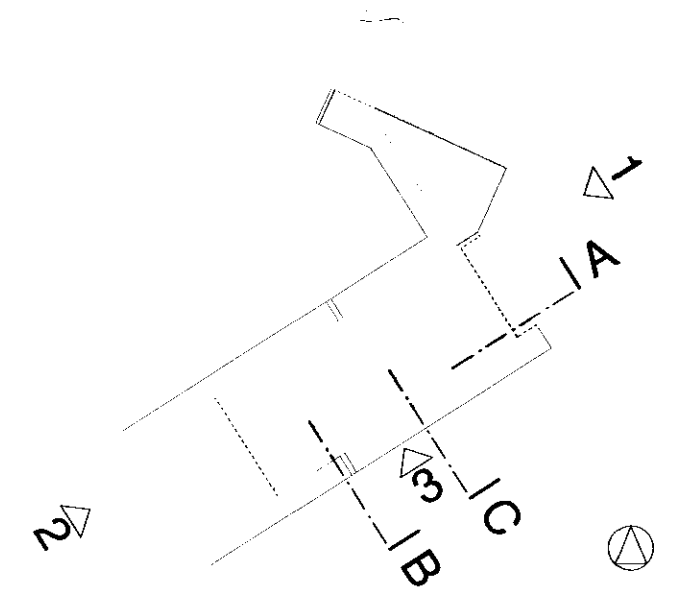
2 útlit suð-vestur



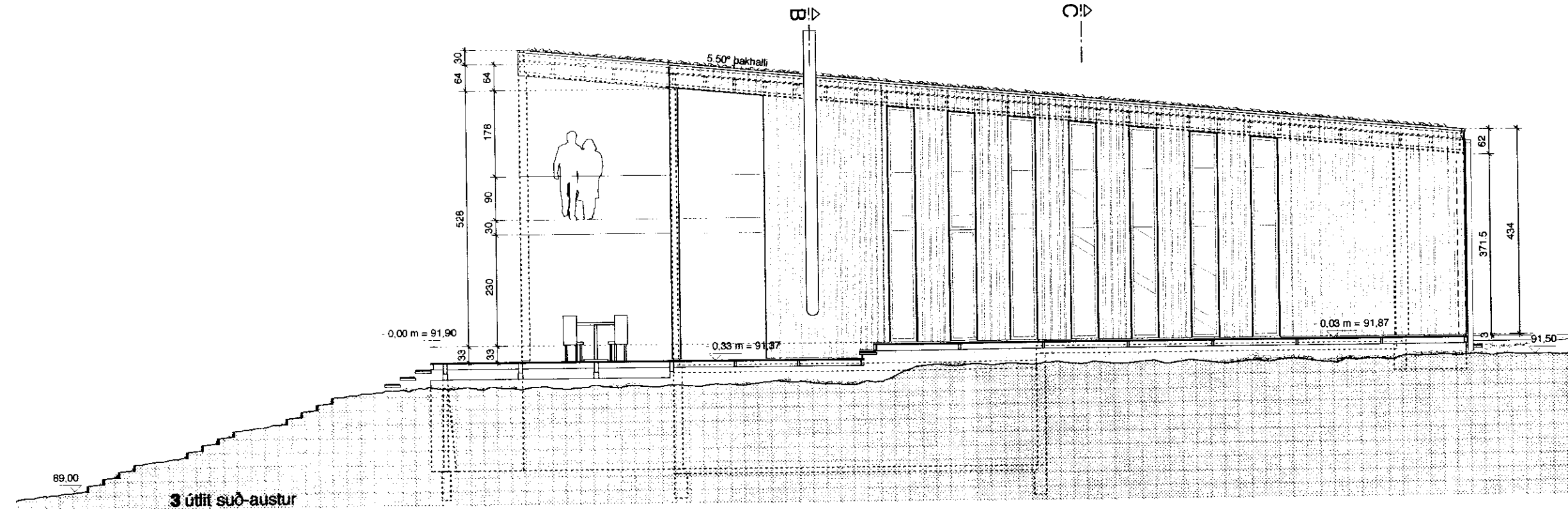
C snið C-C



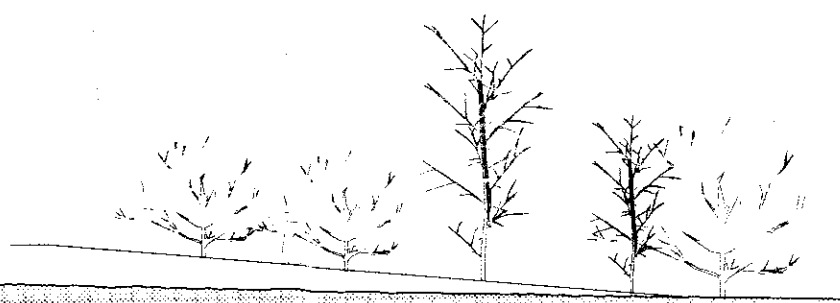
B snið B-B



A snið A-A



3 útlit suð-austur



Vinnustofnan Pverá ehf
 Skólavörðustíg 12 • 101 Reykjavík • sími 5514060 • fax 5614060 • arkverk.is

Stapi 4, sumarhús við Úlfliótsvatn
 Grímsnes- og Grafningshreppi

teikning: útlit og snið - blað 1
 hönnuð: VB verknr.: 1.146
 teiknað: ML, RR kvarði: 1:100 (A2)
 breytt: 28. júní 2011 dags: 06. júní 2011

yfirland: Valdis Þjarnadóttir arkitekt FAI, FSSA
 tölvuskra: Stapi 4 sumarhús aðalteikningar.mod blaðnr.: **1.04**

0 1 2 3 4 5 m