

Þjótavegur

NORÐUR



aðkomuvegur

byggingarreitslína

snertilína

90 gráður

aðkomuvegur

braggi

fjórthúsa

hlæða

fjórthúsa

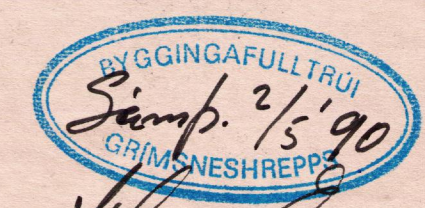
snertilína

vélagæymsla

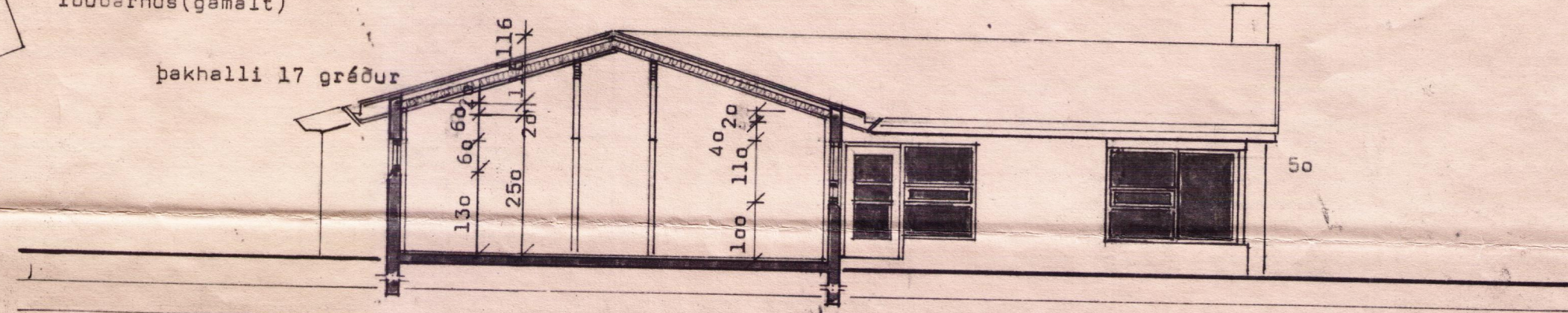
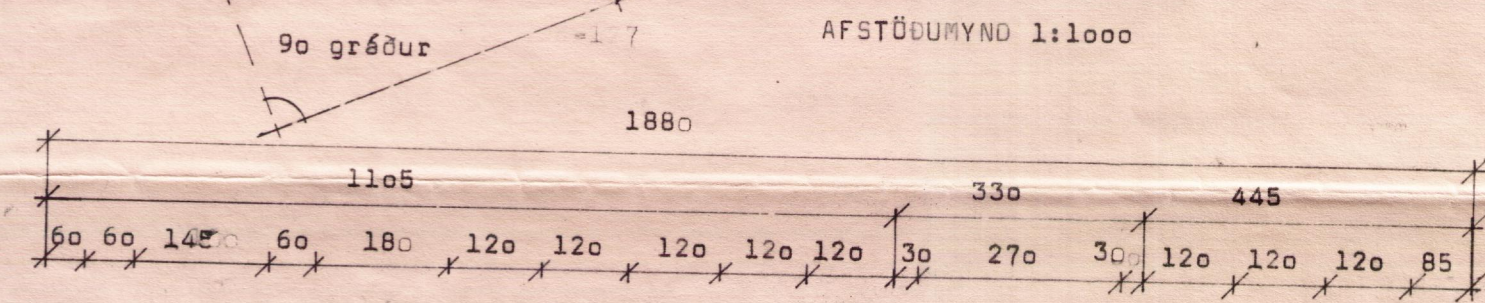
íbúðarhúsa

íbúðarhúsa (gamalt)

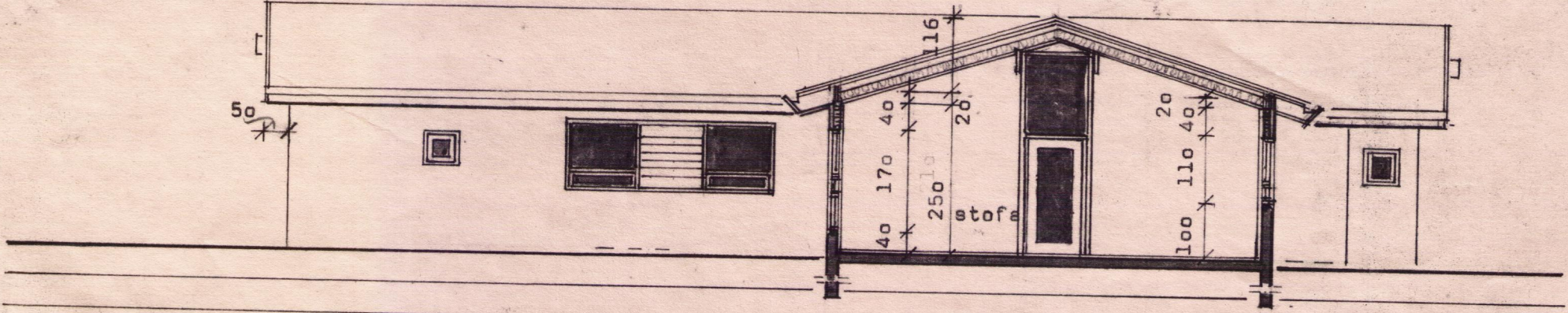
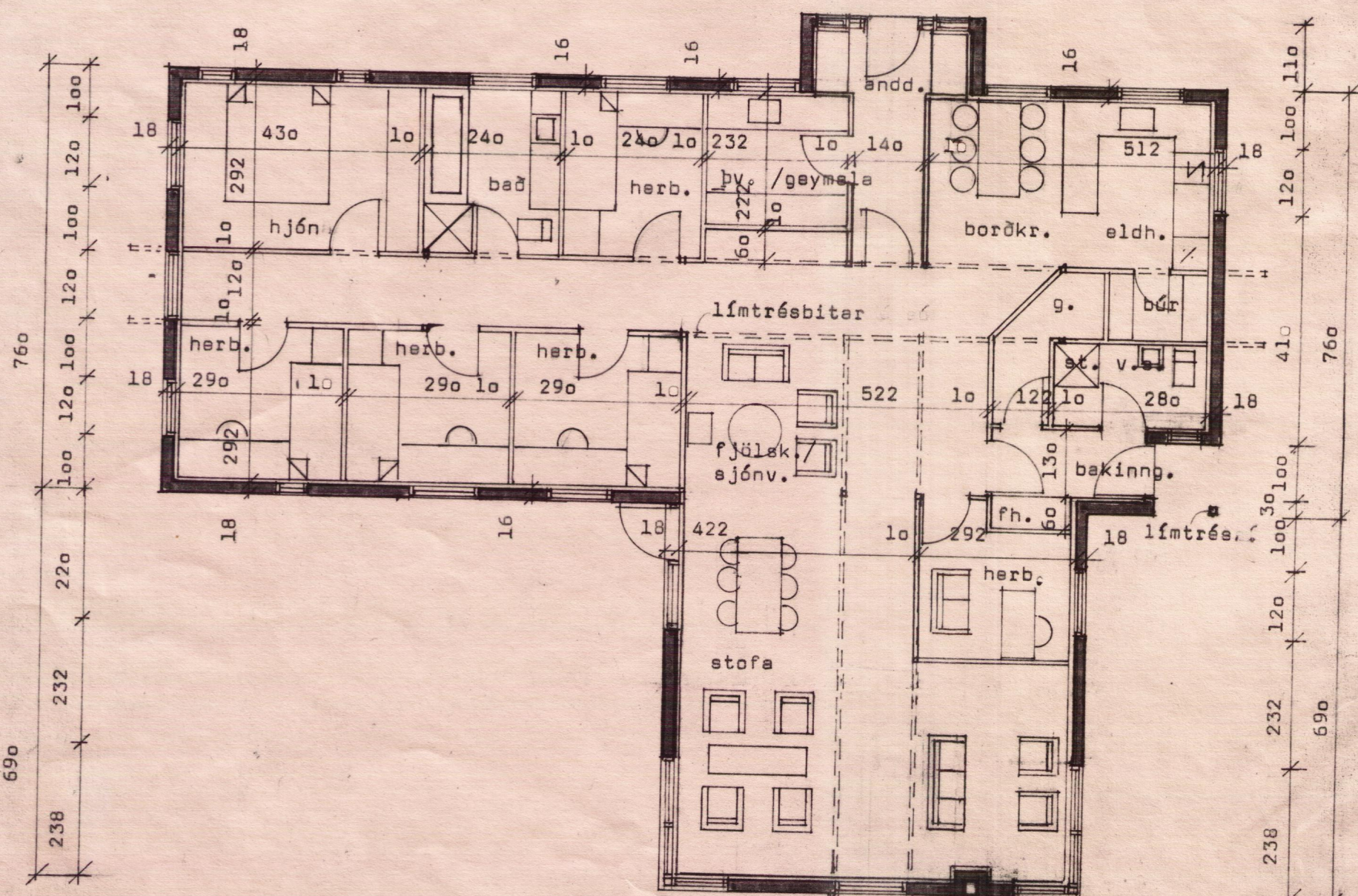
þekhalli 17 gráður



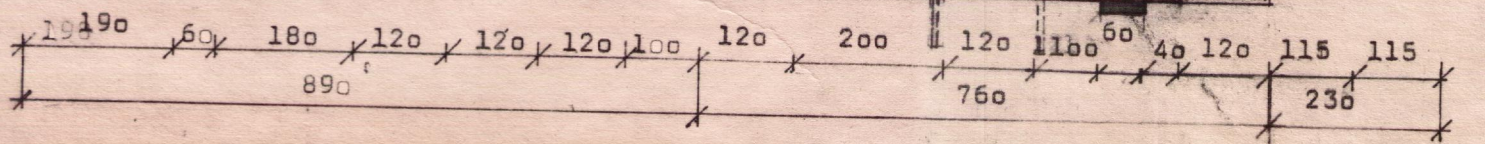
Hilmar Gunnarsson



þverskurður norður-suður



þverskurður vestur-austur



BL BYGGINGASTOFNUN LANDBÚNADARINS LAUGAVEGI 120, REYKJAVÍK, SÍMI 25444

Svínavatn, Grímneshreppi, Arnessýlu

Íbúðarhúsa úr steinsteypu

stærð 197,4 m² 650,4 m³

TEIKN. NR. 01-3771

BLAD NR. A-1

MÆLIKVARÐI 1:100

DAGSETNING 9.3.'90

HANNADBJÖRN H. JÓHANNESSON