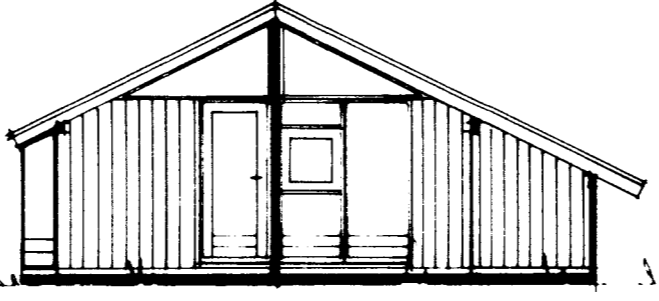
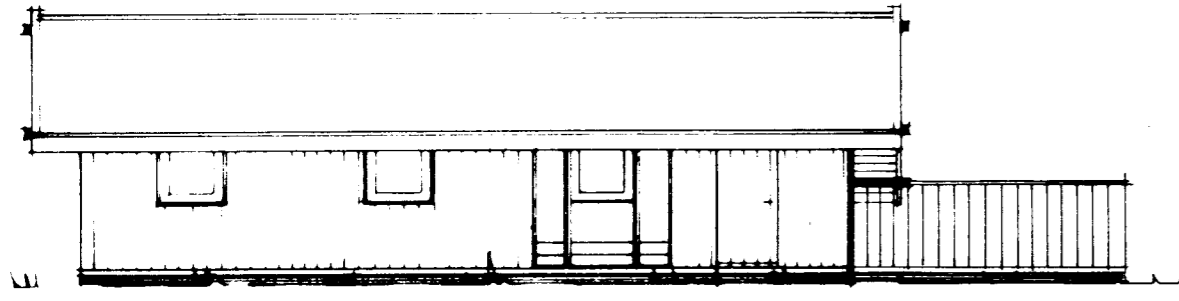
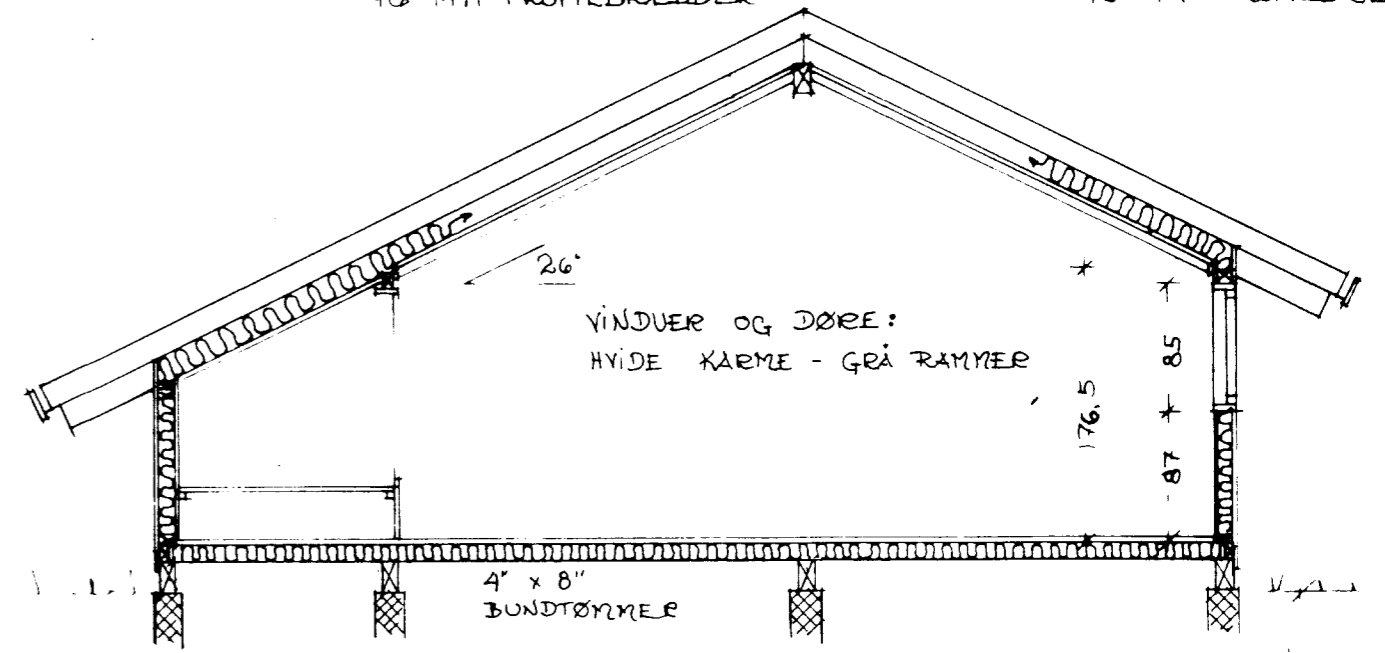
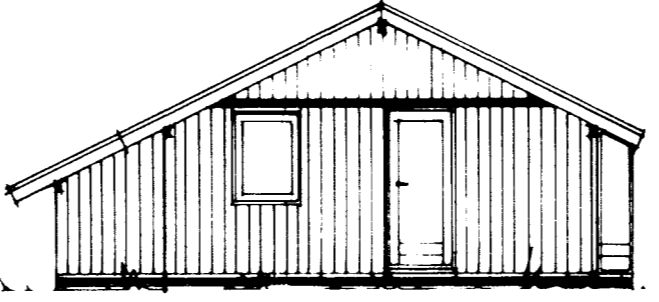
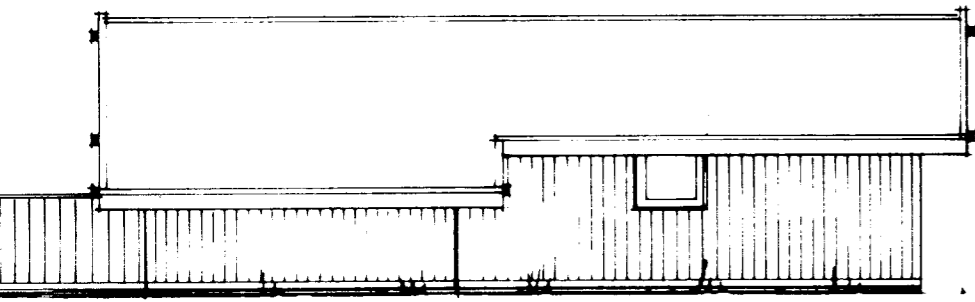


38 x 56 MM LÆGTER
 45 x 145 MM SPÆR
 90 x 200 MM LITRÆ I KIP
 95 x 90 MM STOLPER
 LOFT: 150 MM MINERALULD
 ALU-KRAFT
 16 MM PROFILBRÆDDER

25 x 125 MM LÆGTER
 FALSET TRYKIMP. BEKL.
 VINDPAP
 95 x 95 MM STOLPER PR
 90 CM C/C
 100 MM MINERALULD
 ALUKRAFT
 16 MM PROFILBRÆDDER

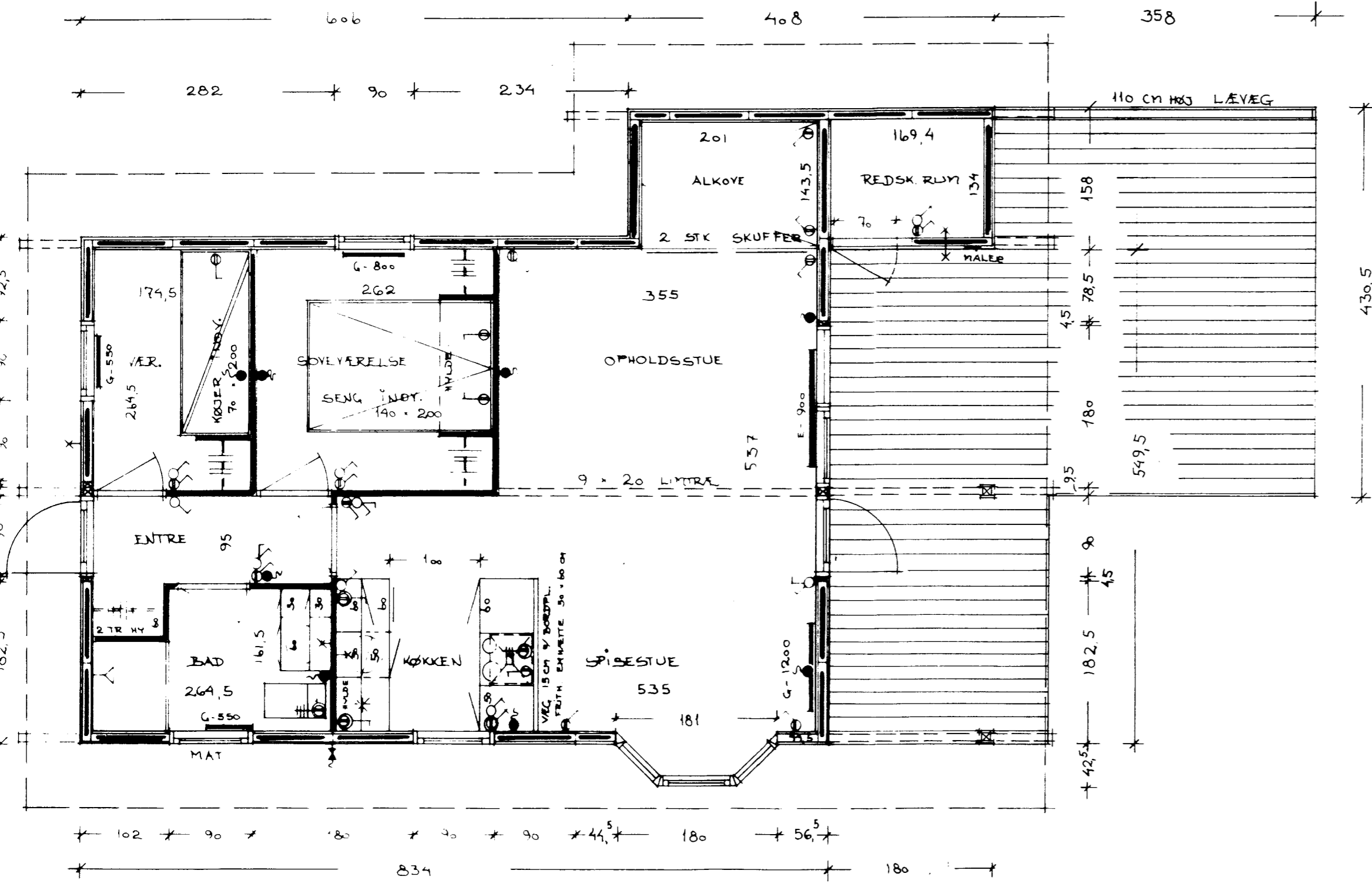


SNIT 1:50

GULV: 22 MM SPÄNDEGULV
 ALUKRAFT
 150 MM MINERALULD
 50 x 150 MM STRØER
 50 x 150 MM TRYKIMP
 FODREMME

SKILLEVEGGE:
 45 x 45 MM STOLPER
 50 MM MINERALULD
 BEKLEDT PÅ BEGGE SIDER
 MED 16 MM PROFILBRÆDDER

PUNKT-FUNDAMENT:



PLAN 1:50
ALLE UBENÆVNT VÅL ER 1 CM

GARDARUR
 Jan. 3/11/89
 H. H. Sørensen

| | | | |
|-----------|--|--------|-------------------|
| Bygherre | ELDASKALINN BRÓTARHOLI 3, 105 REYKJAVÍK, ISLAND | Type | LODREJ 6645/26 |
| Byggeår | | Sag nr | 3016-MIS |
| Matr. nr. | | Mål | 1:50, 1:100 |
| Dato | 28.4.88 | Rev. | |
| | | Sign. | K.T. |