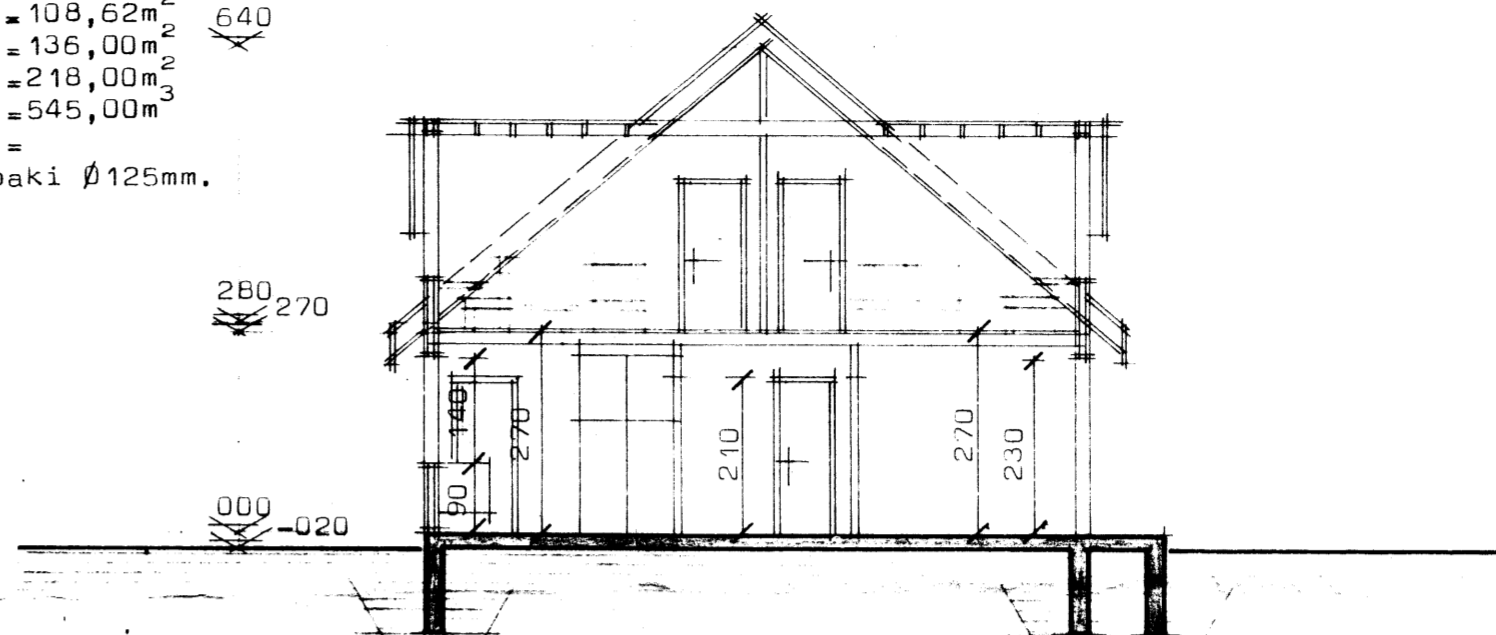


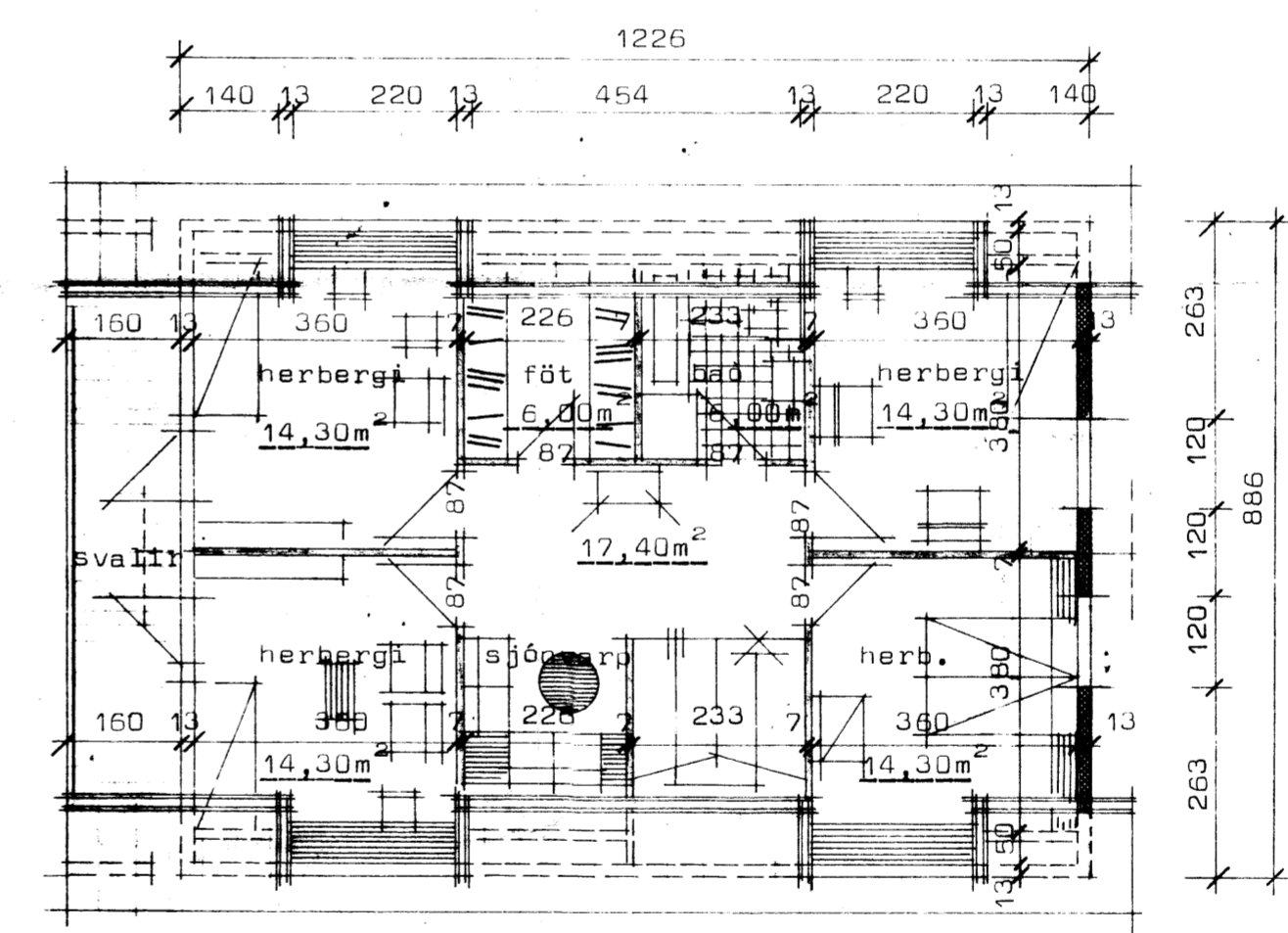
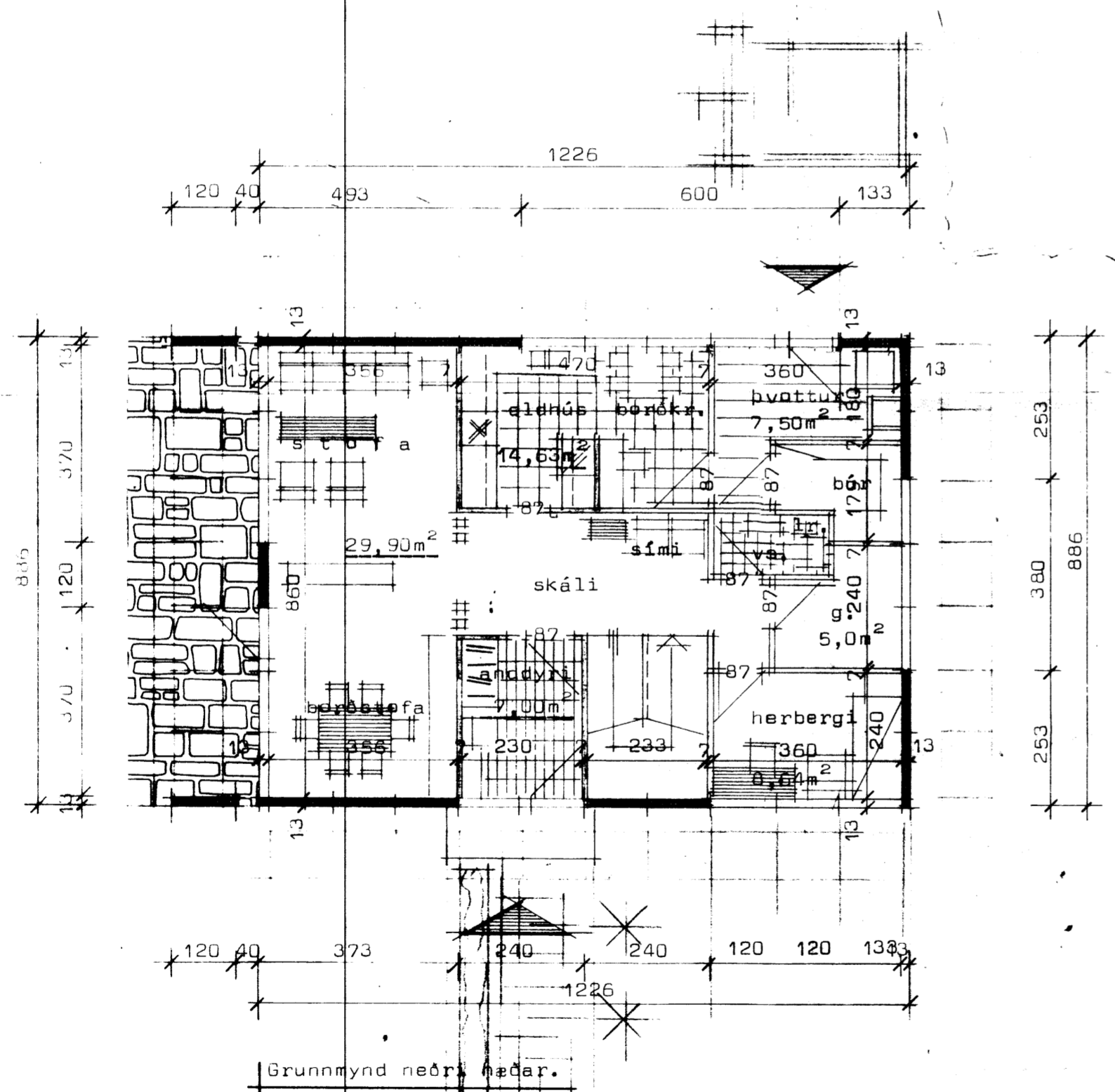
BLESASTAÐIR

Skeiðahreppi Arnessýslu.

Flatarmál húss brúttó 108,62m² 640
 Flatarmál íbúðarnettó 136,00m² 640
 Heildarflatarmál 218,00m² 640
 Rúmmál húss 545,00m³ 640
 Nýtingarlutfall =
 lr merkir loftrás upp úr þaki Ø125mm.




Sneiðing í hús



Grunnmynd rishæðar

Kóllunartölur K á hitaveititusvæði:
 þak = 0,30 w/m²°C
 gólf = 0,40 w/m²°C
 útveggir = 1,00 w/m²°C vegið meðaltal.

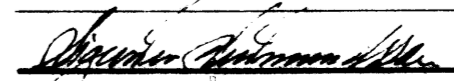
*ekki tekið
 vaxið af
 10. október*




STAÐALHÚS

TEIKNISTOFA SÍÐUMÚLA 31 SÍMI 83141

VERKEFNI	DAGS. 1982	VERK NR ST 171
Grunnmyndir, sneiðing og afstöðum.	MKV. 1:100	
Blesastaðir Skeiðahreppi Arnessýslu	BR.	
	BLAD NR 1.01	


SIGURÐUR GUDMUNDSSON


SIGURÐUR KRISTJÁNSSON

FTFÍ