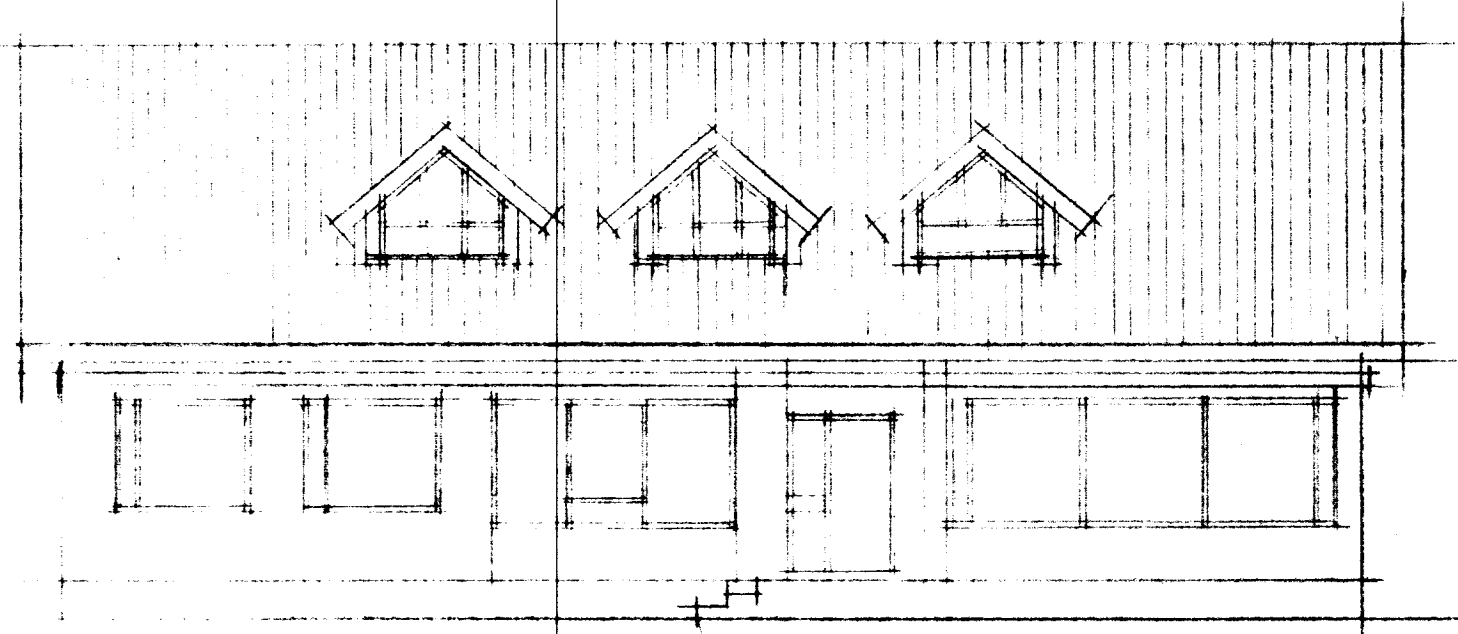


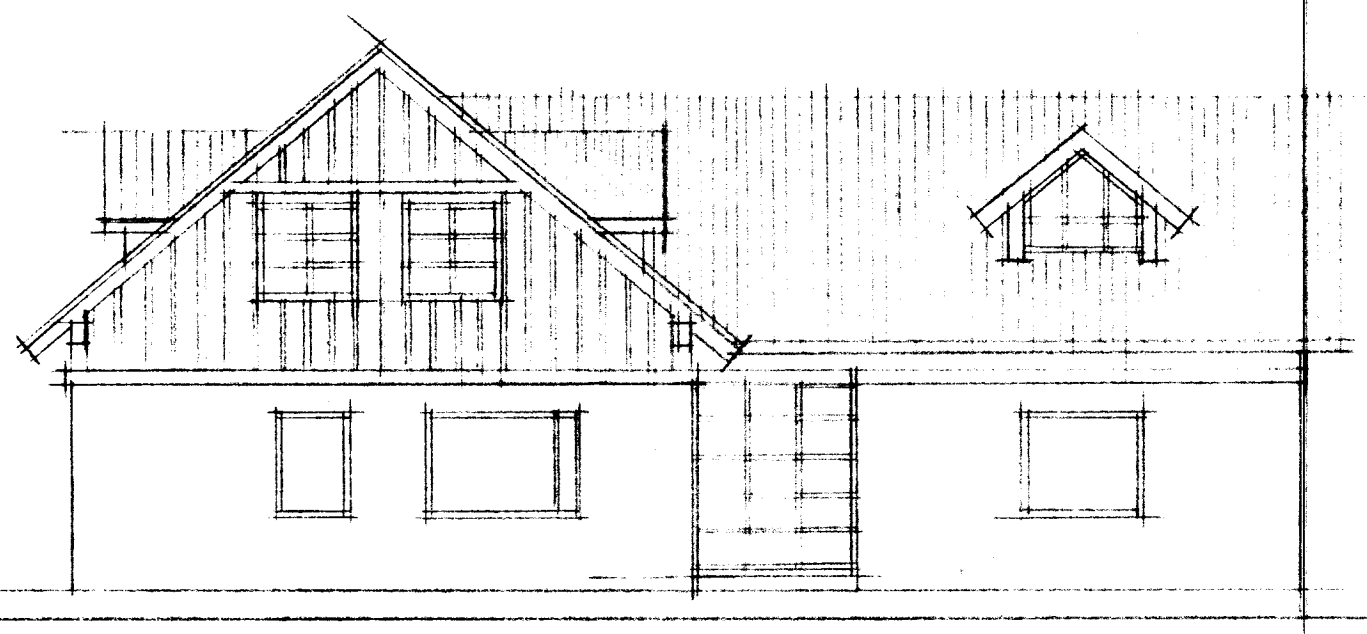
BYGGINGARFULLTRUI
SKEIÐAHREPPS

BYGGINGARFULLTRUI
Samp. 1/5 '90

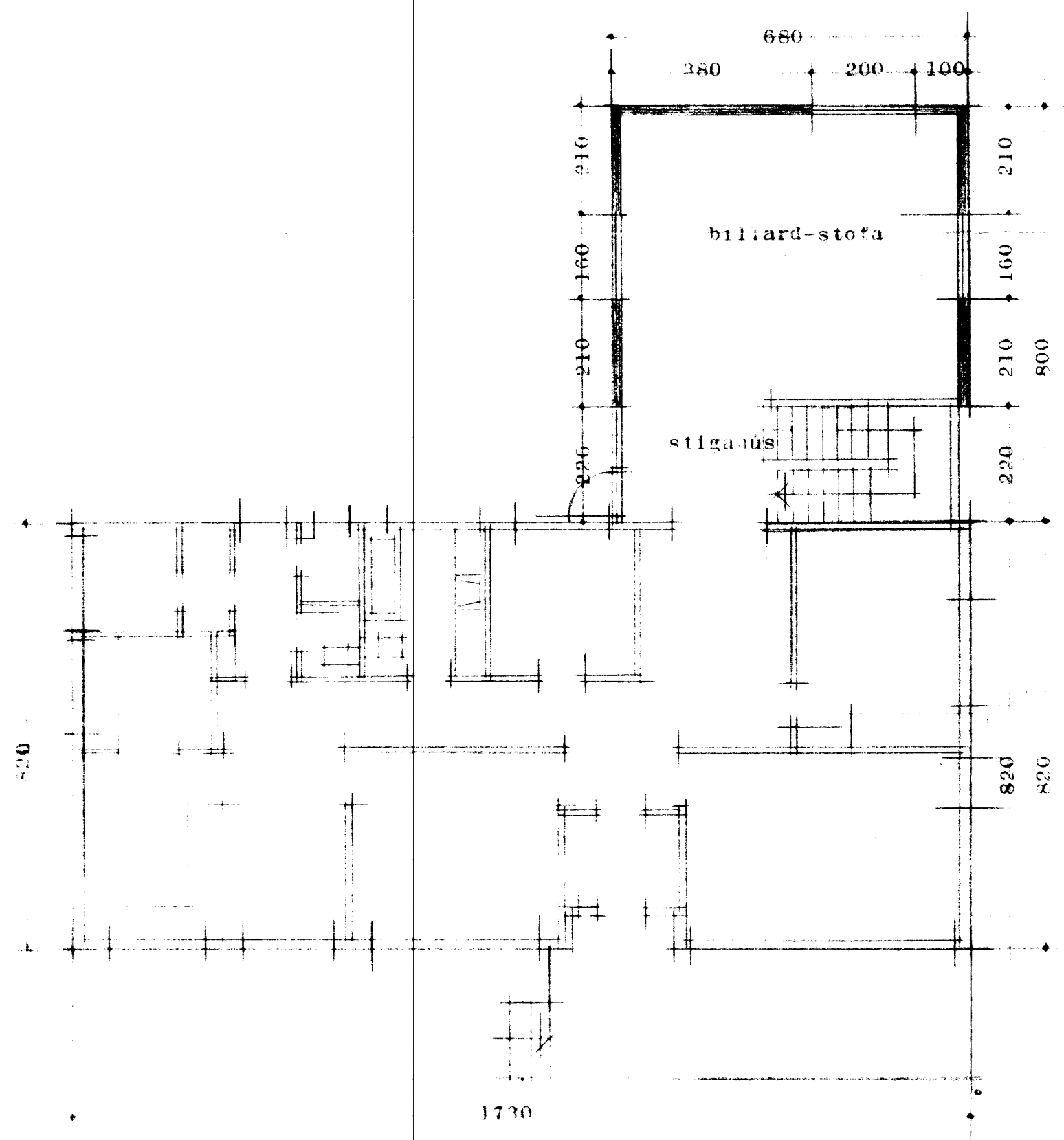
H. P. Ólafsson



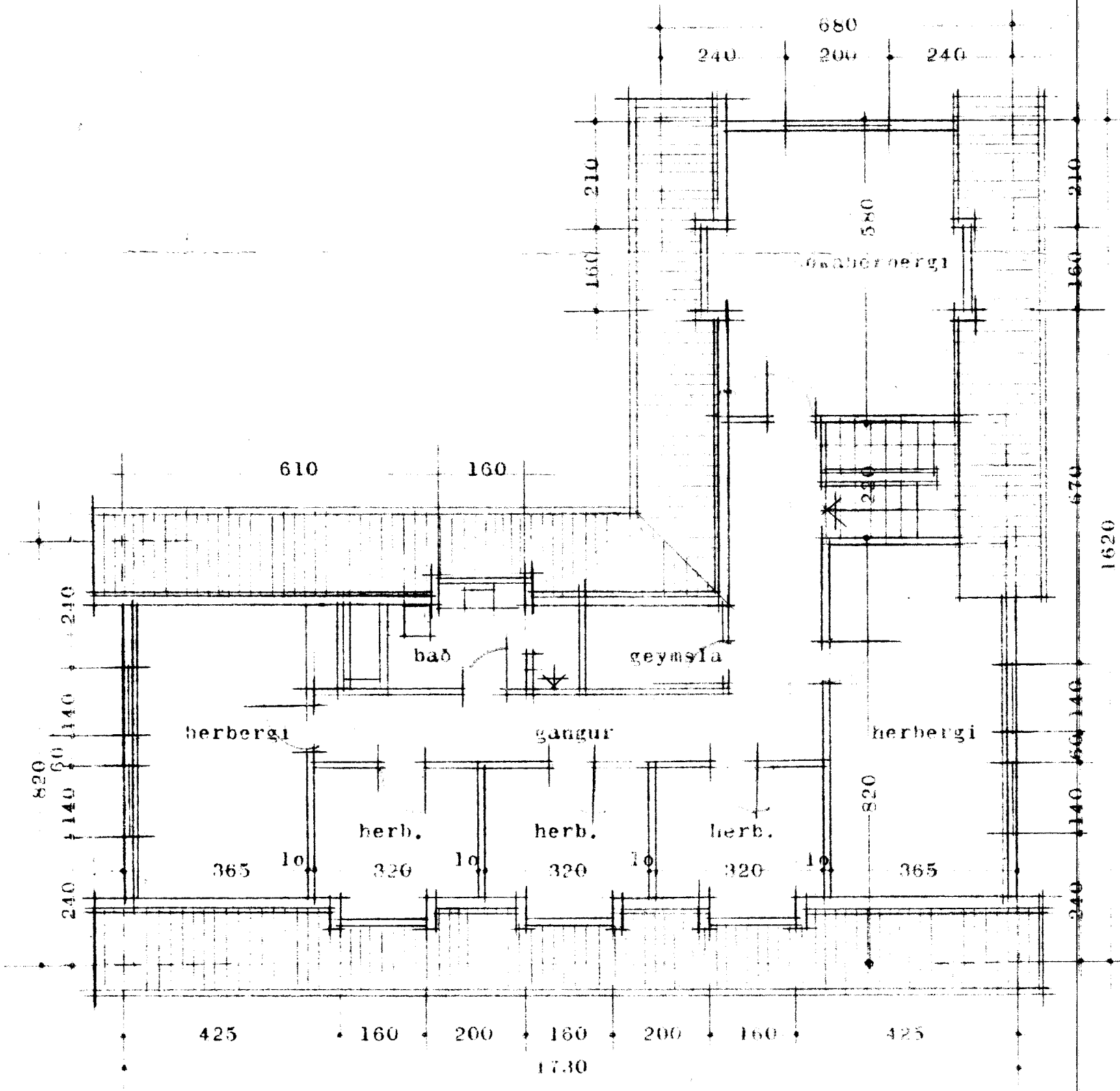
SVÍÐA



AUSTUR



1730



ÞAKAÐ.

BRJANSSLEIÐIR, Skeiðahreppi
SLEKILS,
Grunnmyndir og útlit 1:100
Reykjavík, nóv. 1989
Þorvaldur Arístmundsson
arkitekt. *f.h.*