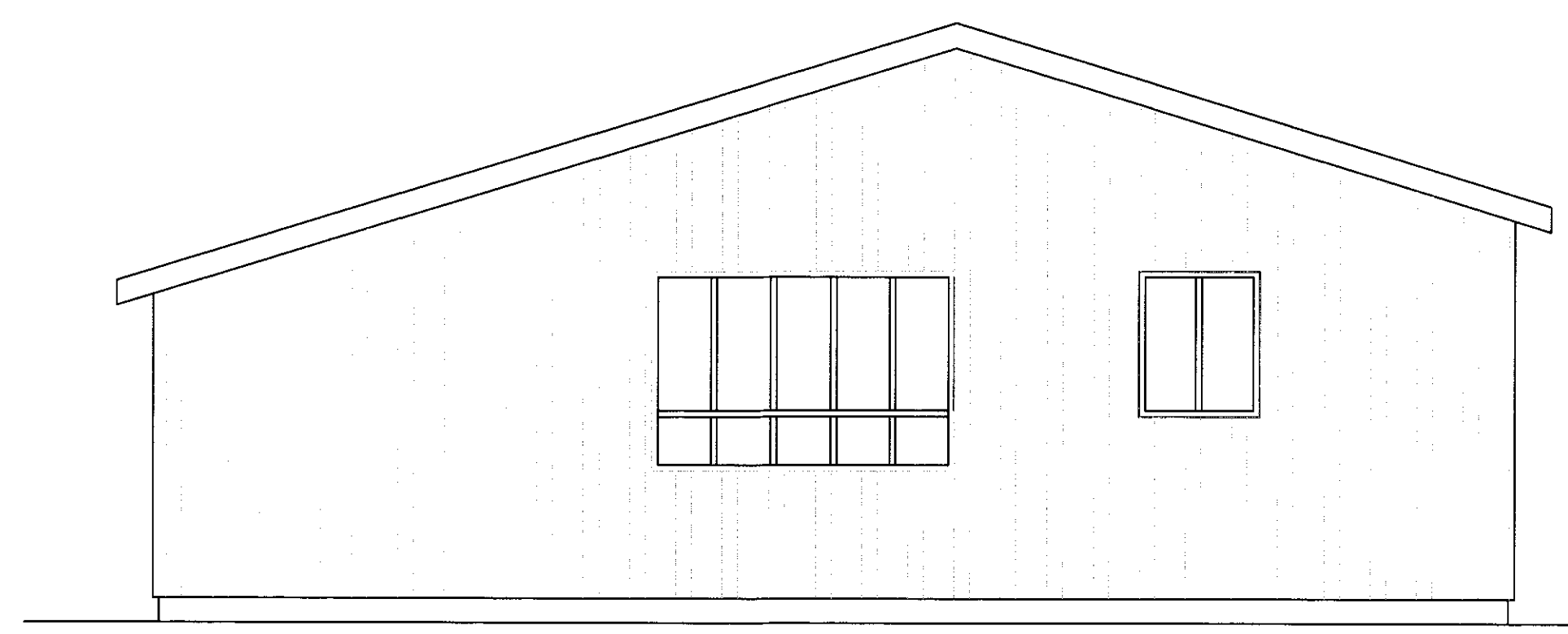
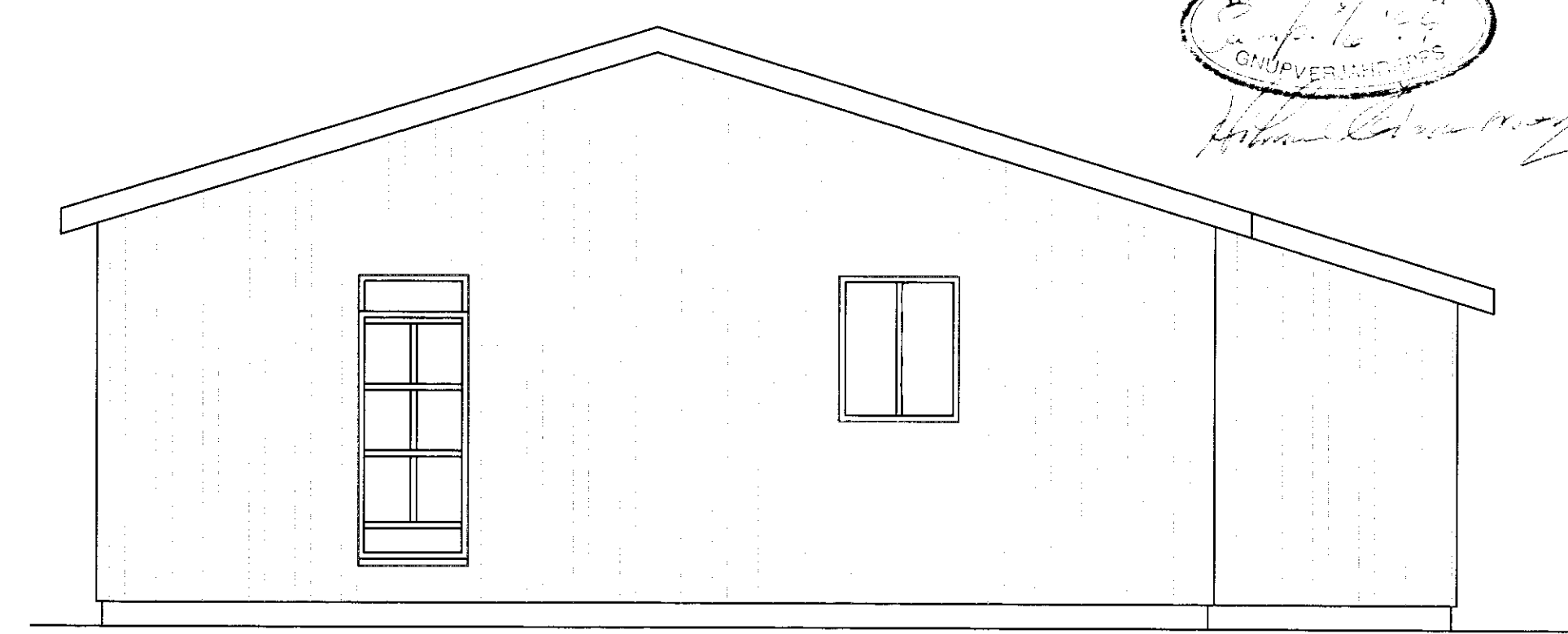


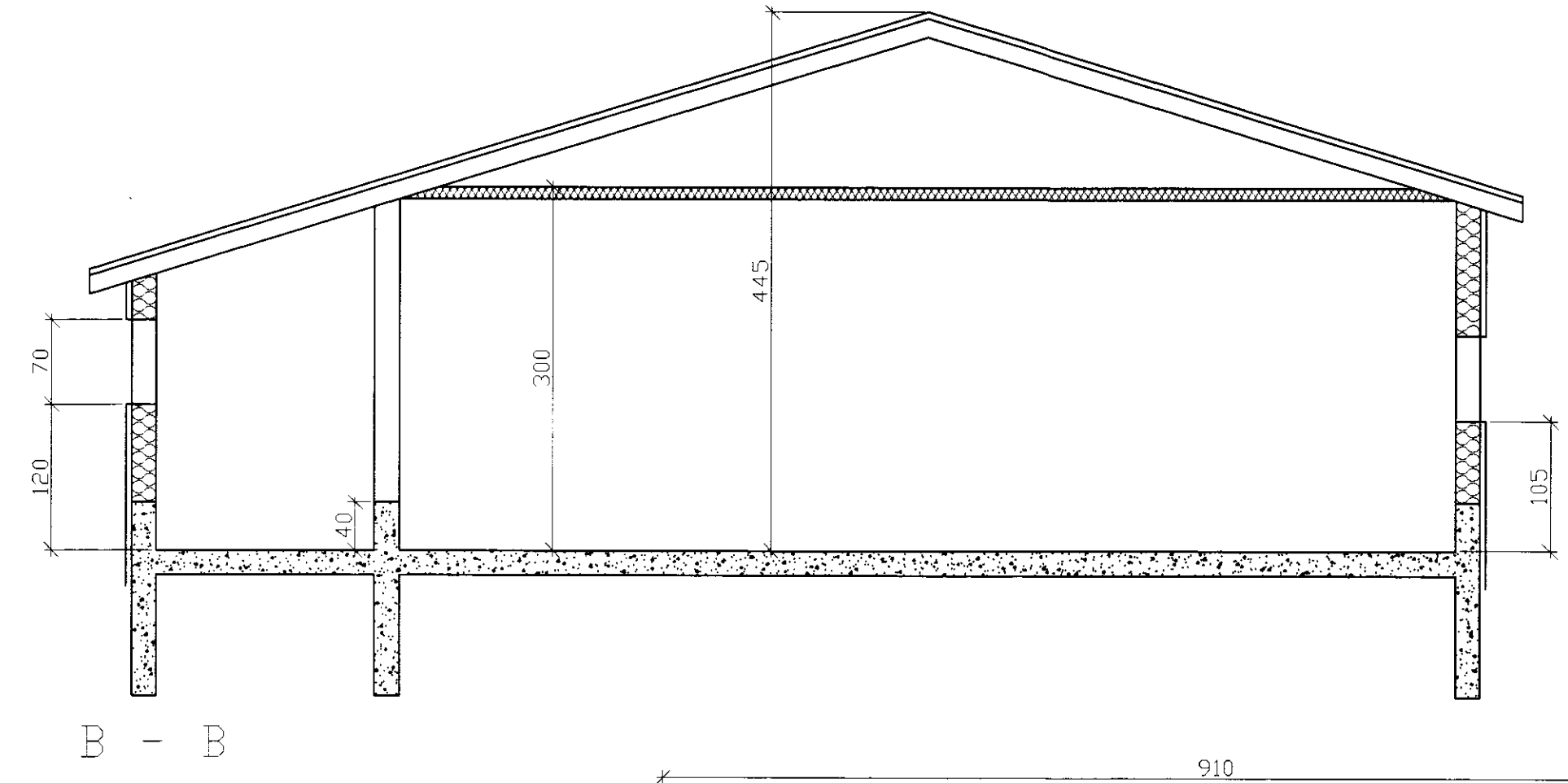
A - A



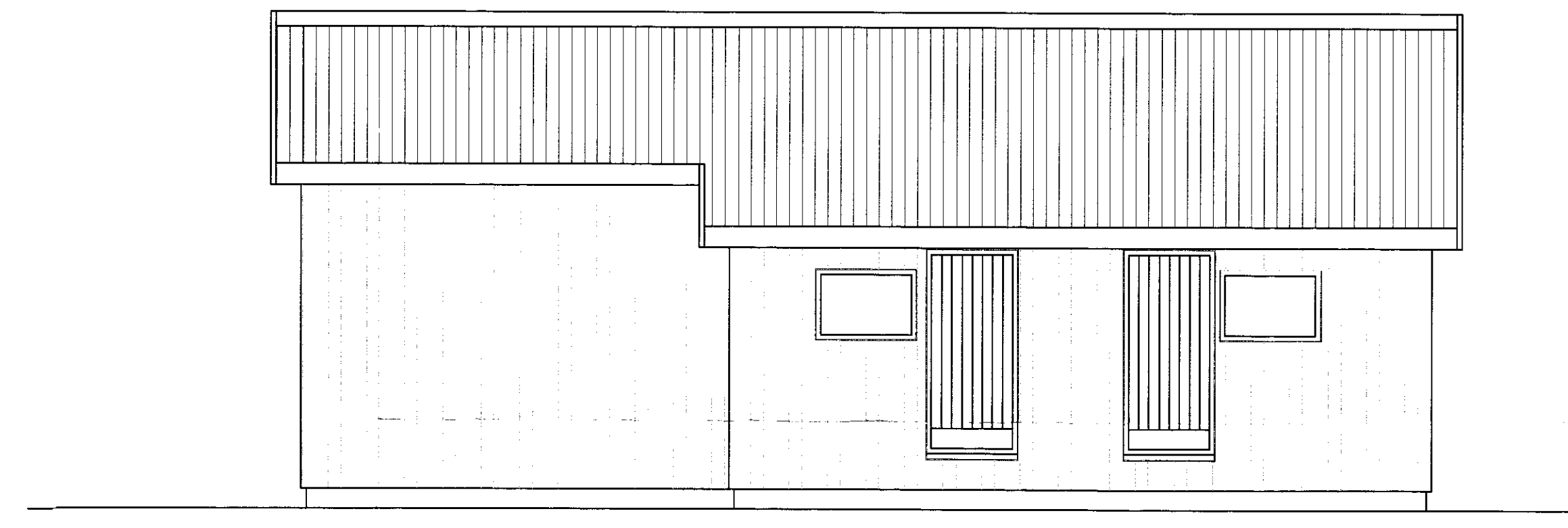
Austur



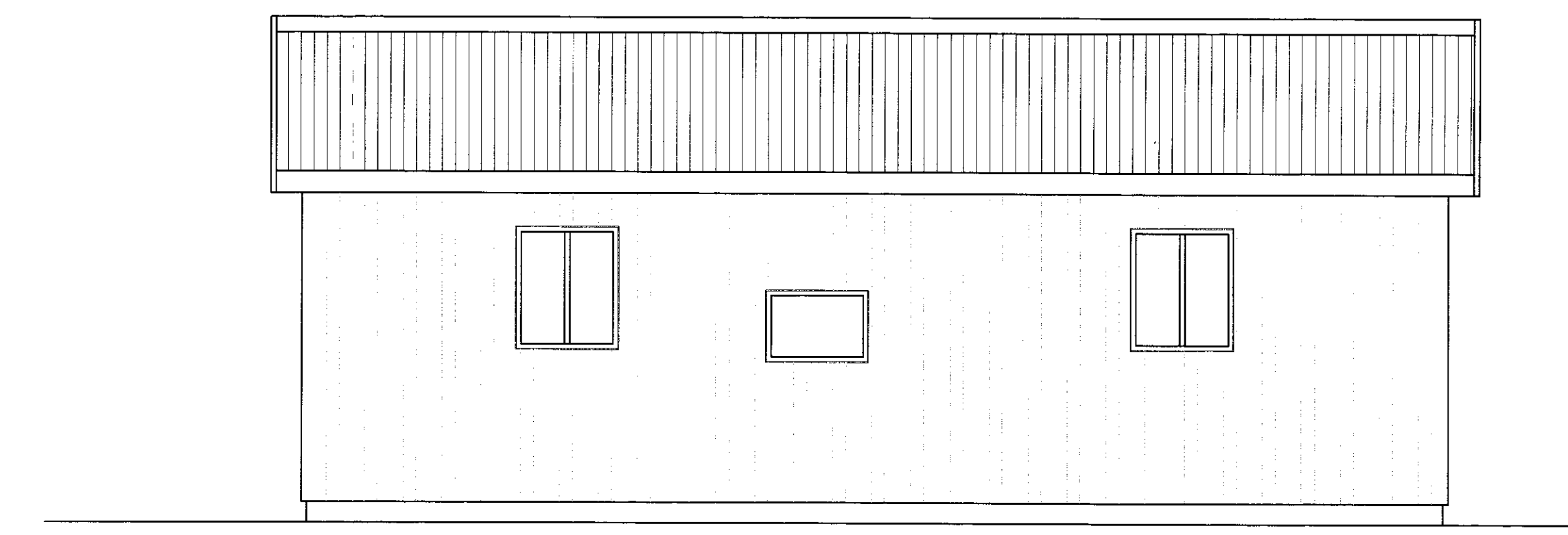
Vestur



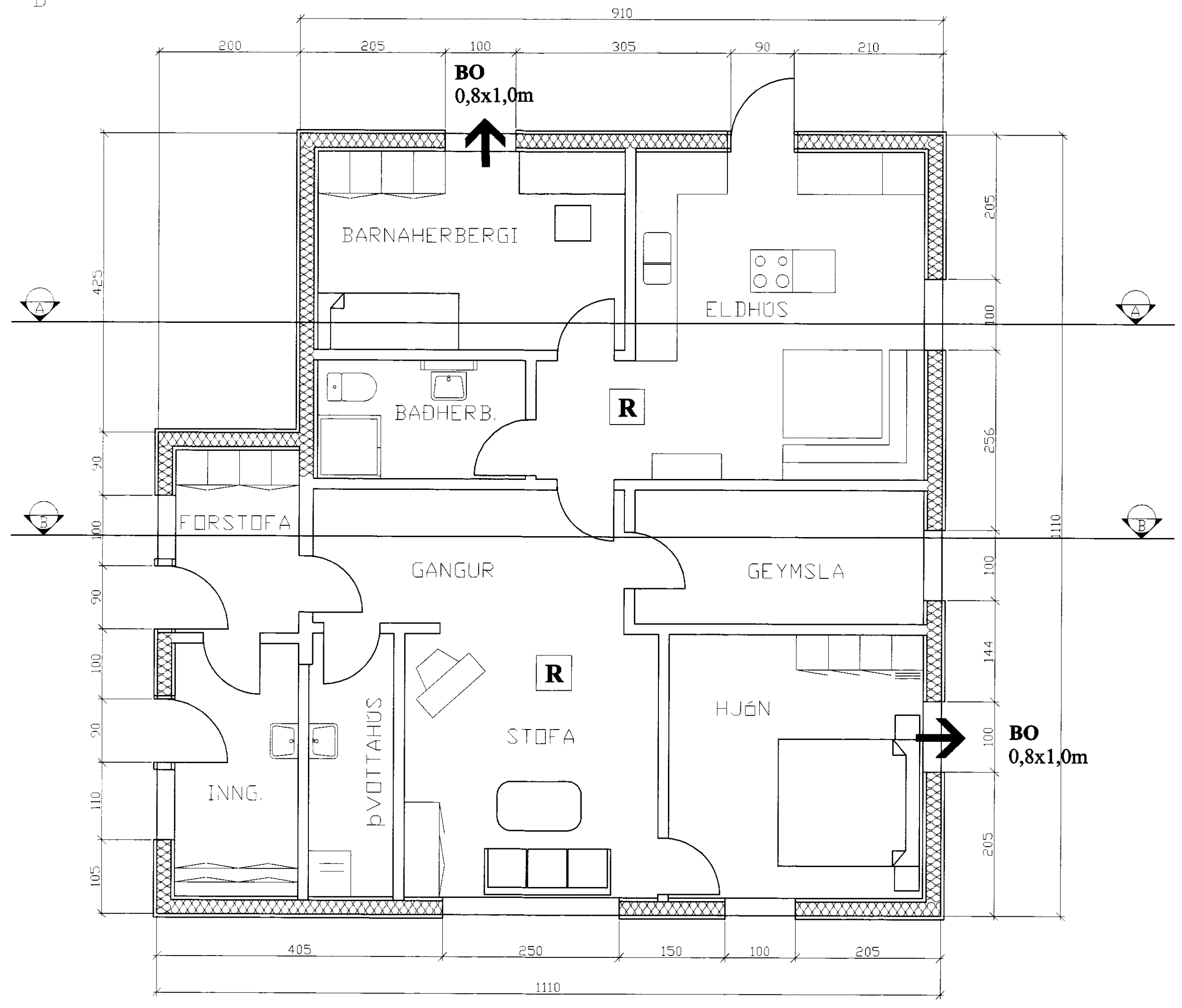
B - B



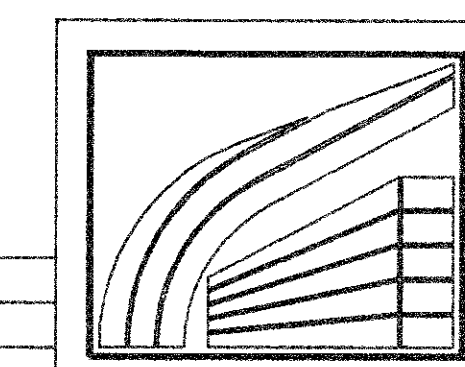
Suður



Norður



Barnaherbergi	12,47
Bað	5,00
Eldhús	19,46
Geymsla	7,89
Hjón	13,87
Stofa	13,68
Svottahús	4,47
Inngangur	6,57
Forstofa	4,73
Gangur	8,36
Gangur	1,86
Samtals Nettó	98,36
Brúttó	114,70



LÍMTRÉ HF. Töknúmer: Sími: 530 6000 Fax: 530 6019

Hætt III Grúpværjör
breyting á bílskúr í íbúð

TEIKN.	EB	DAGS.	2 06 99
REIKN.		VERK.	
YFIRF.		BLAD.	301
HKV.	150		

Breyting	Dags.	Skýring	Br.

Halva Sigurðardóttir
181200-3255
9