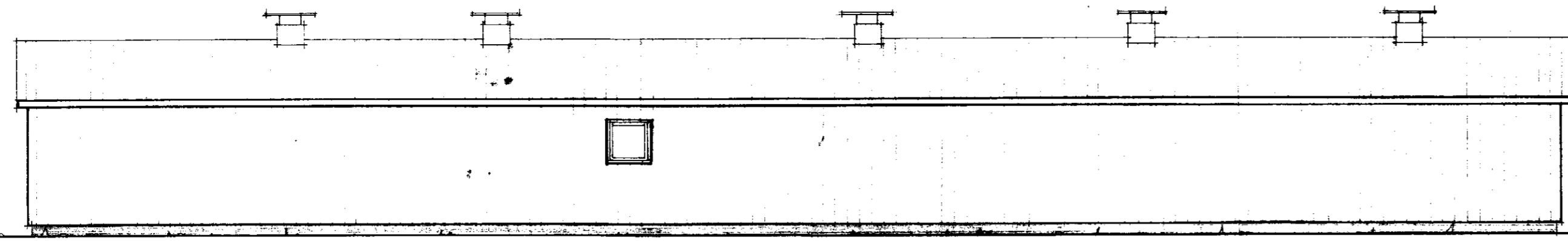
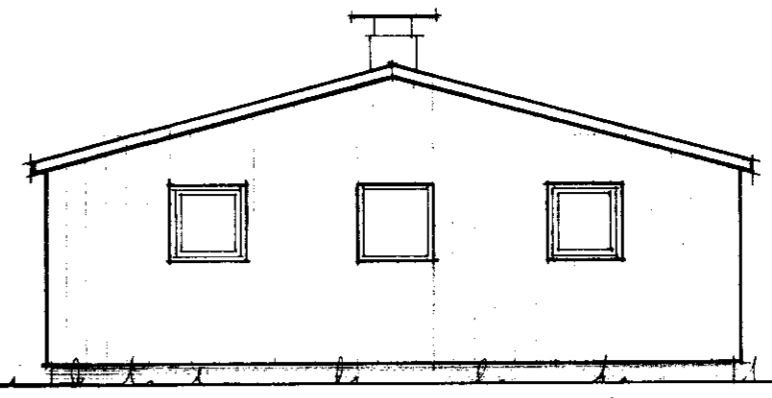


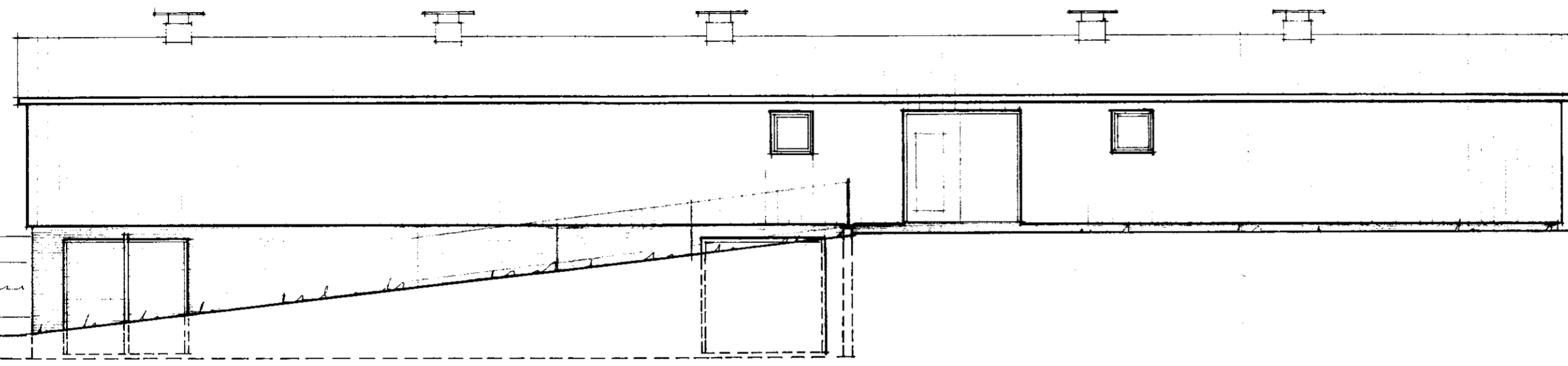
15.07.82



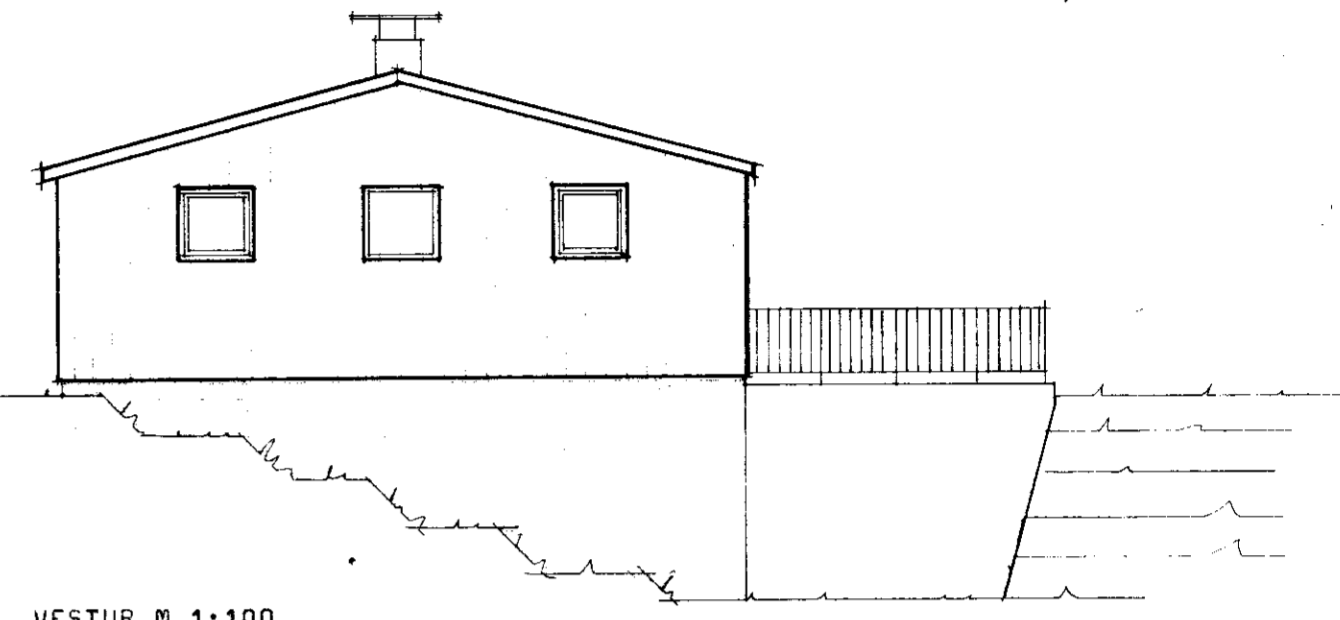
NORÐUR M 1:100



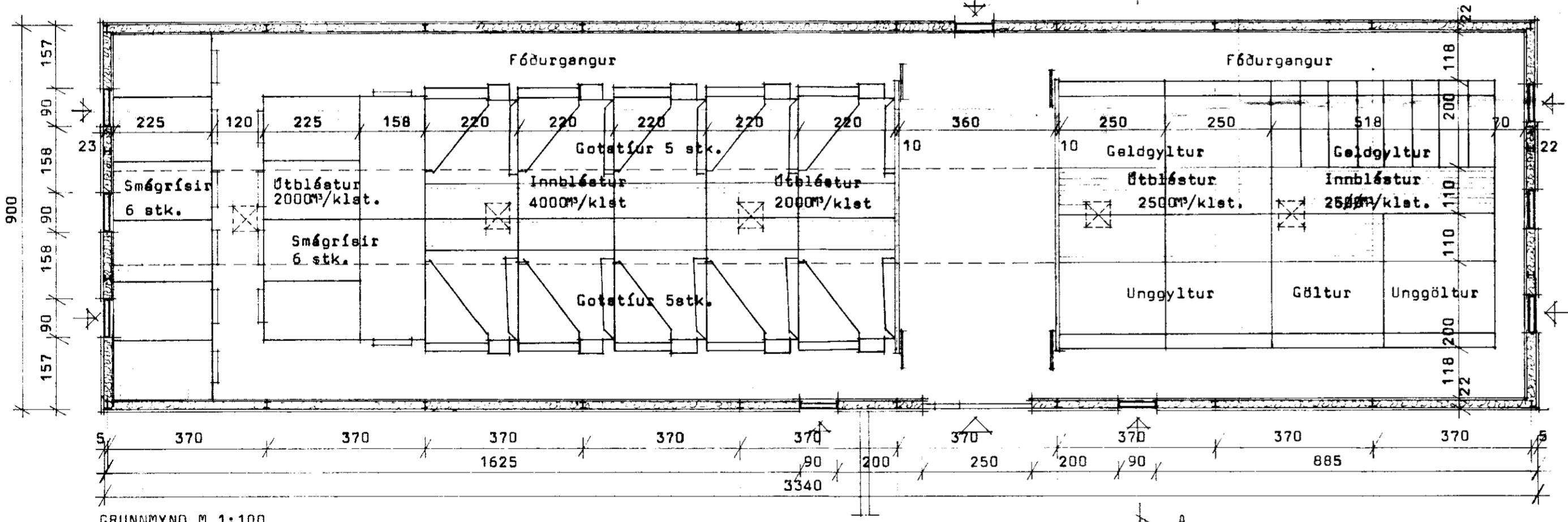
AUSTUR M 1:100



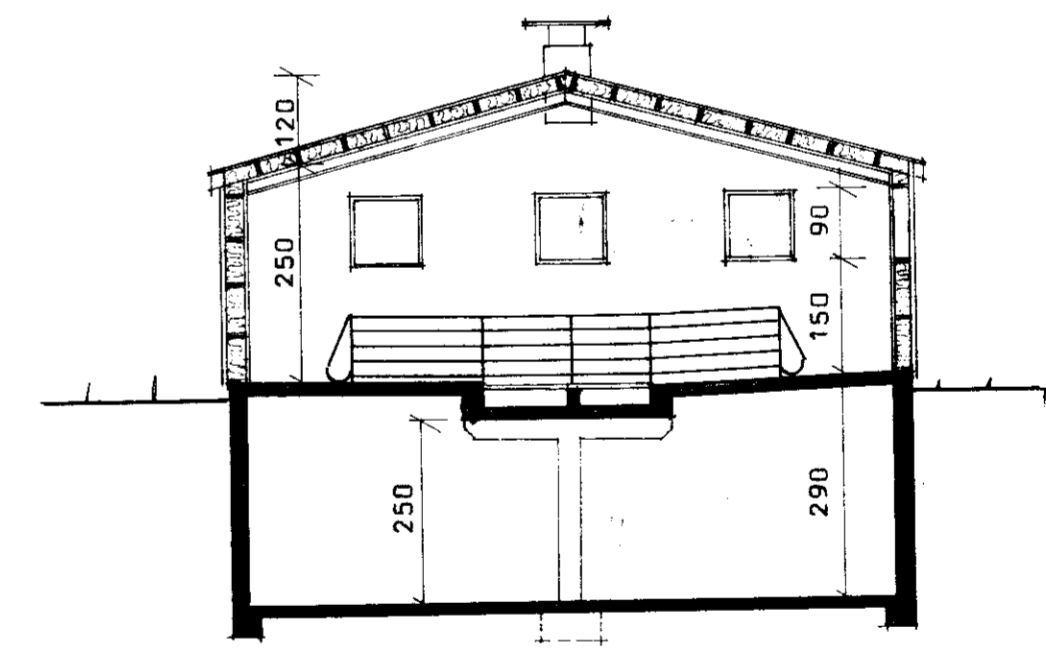
SUÐUR M 1:100



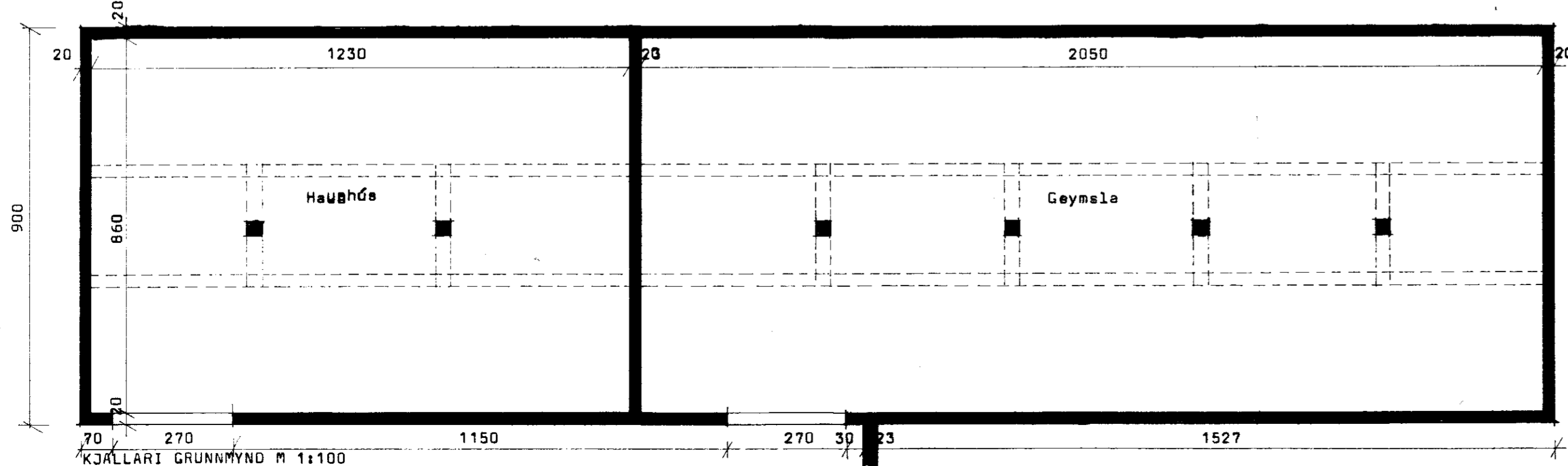
VESTUR M 1:100



GRUNNMYND M 1:100



SNID A-A M 1:100



KJALLARI GRUNNMYND M 1:100

Opnarlægur gluggi

STÆRÐIR:

Haughús	113,4 ^{m²}	328,9 ^{m²}
Geymsla	187,2 ^{m²}	542,9 ^{m²}
Svínahús	300,6 ^{m²}	931,9 ^{m²}

BL BYGGINGASTOFNUN LANDBÚNAÐARINS
LAUGAVEGI 120, REYKJAVÍK, SÍMI 25444
HÄHOLT, GNDPVERJAHREPPI, ÁH.
SVÍNAHÚS FYRIR 30 GYLTUR
GRUNNMYNDIR, SNID OG ÖTLIT

TEIKN. NR. 40-4362
BREYTT FRÁ
MÆLIKVARDI 1:100
DAGSETNING 7-7-1982
TEIKNAD unnar

Ólafur M. Svansson