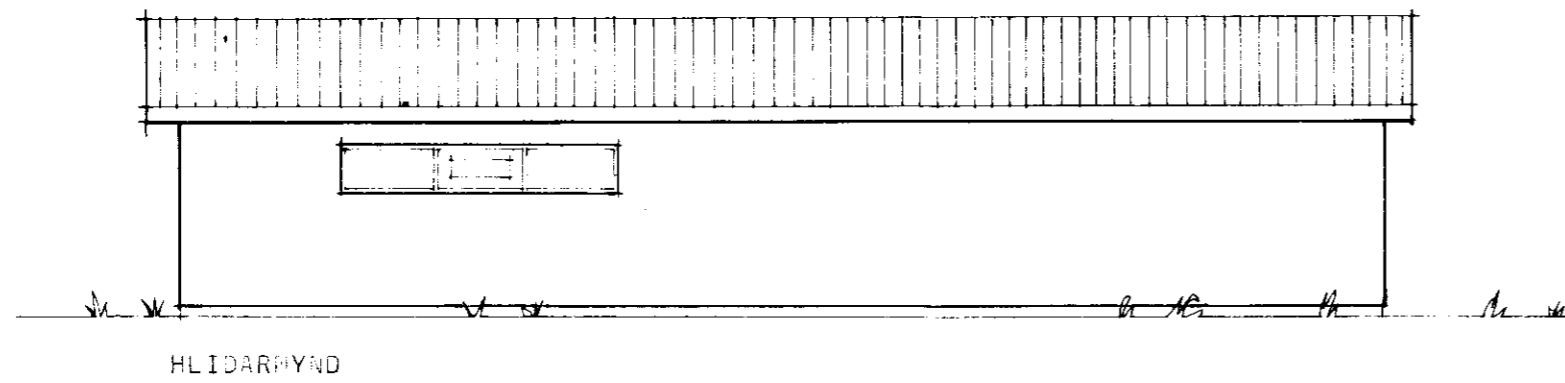
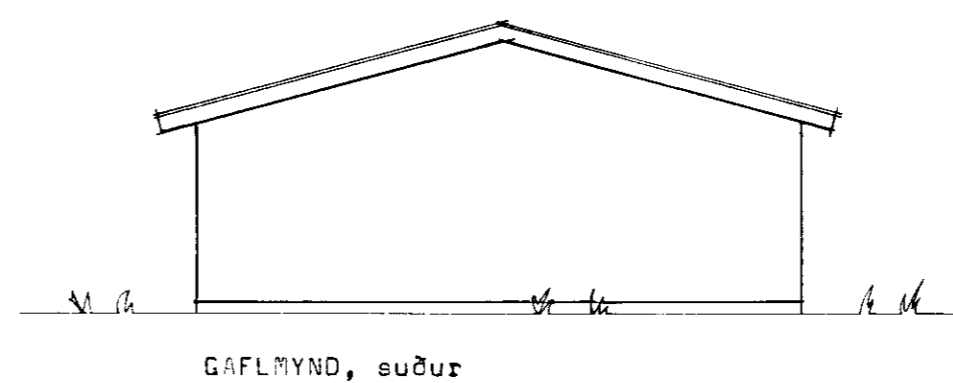


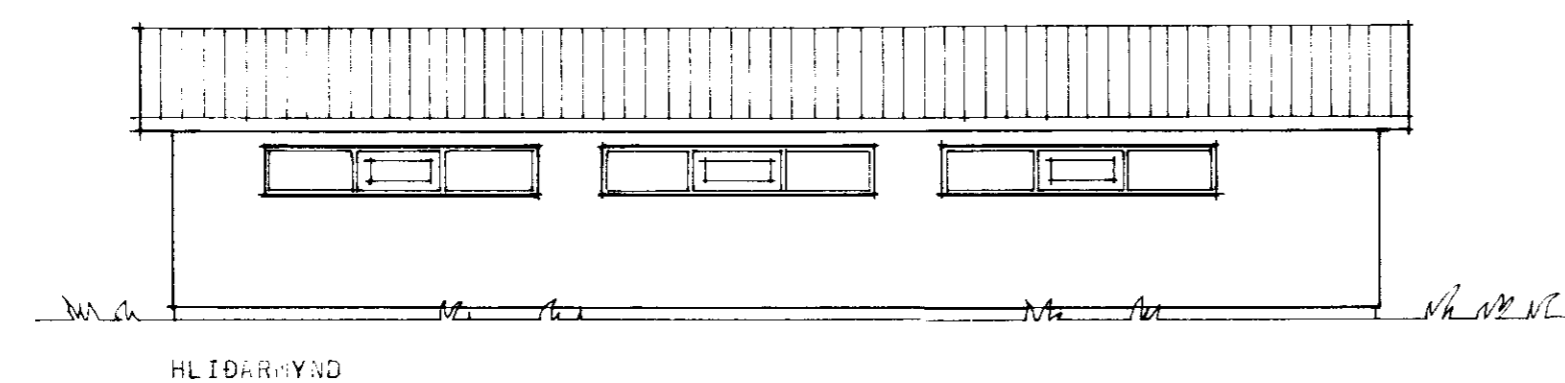
Hanna Þórunn



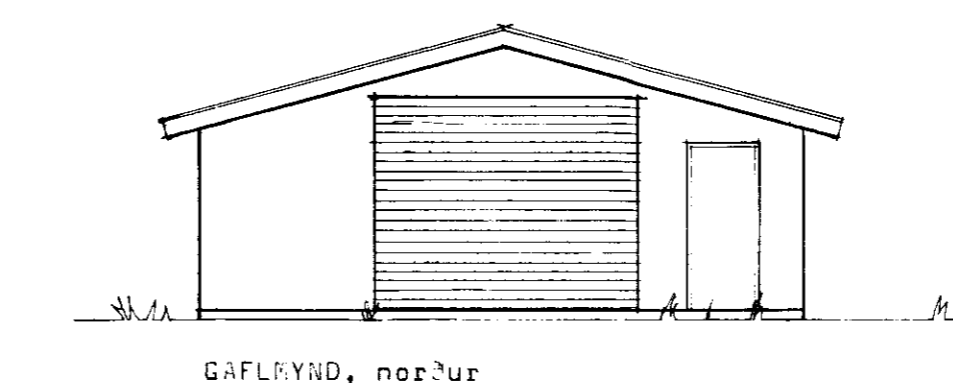
HLIDARMYND



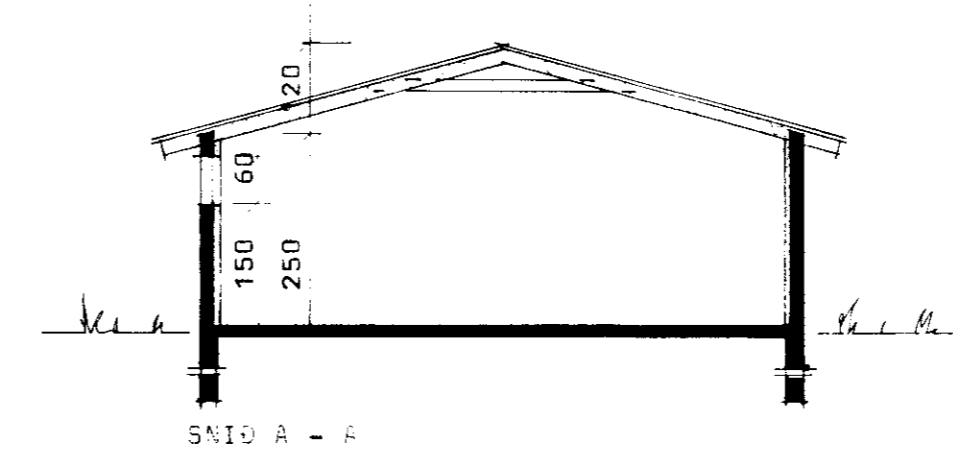
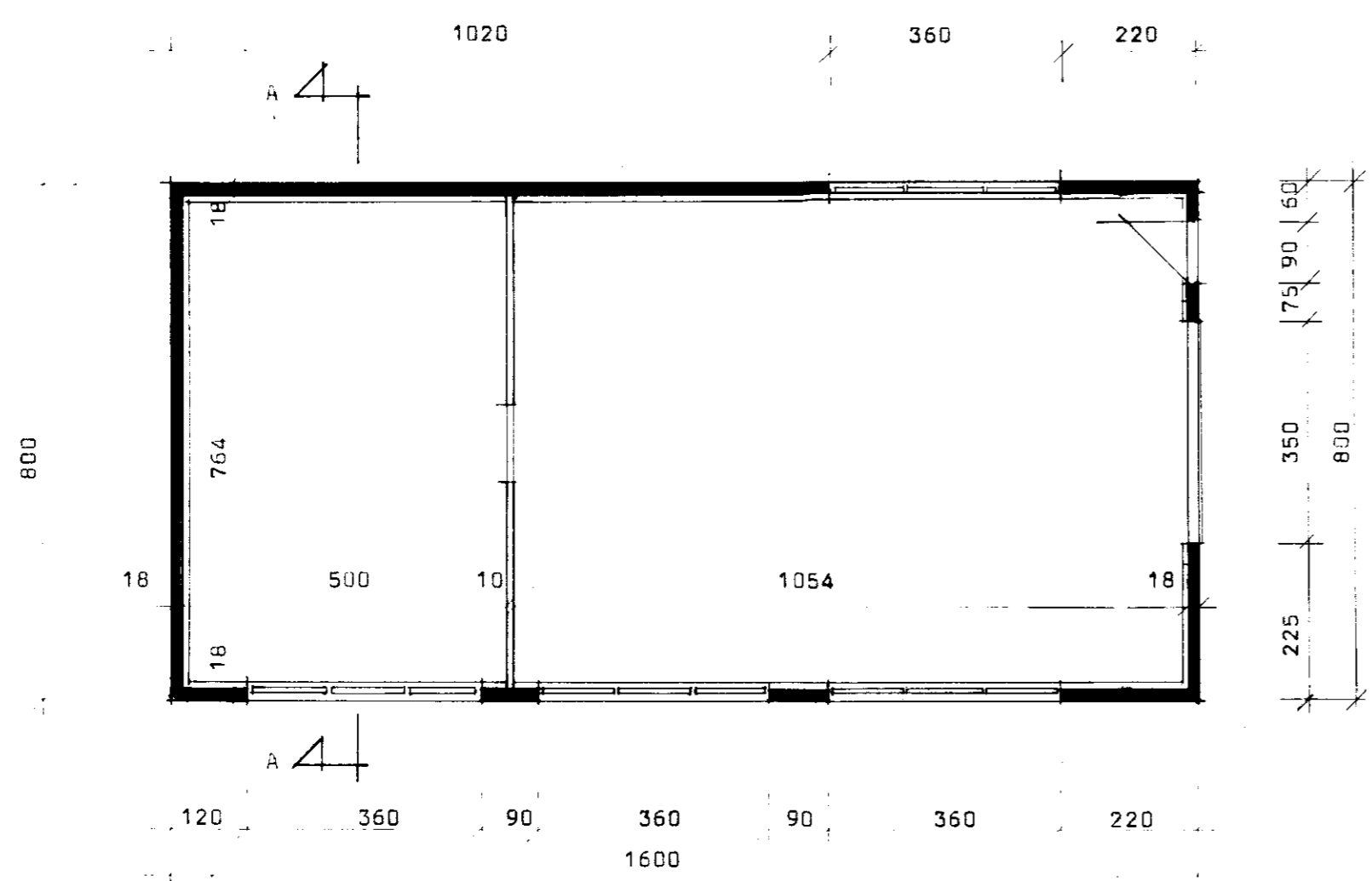
GAFLMYND, suður



HLIDARMYND

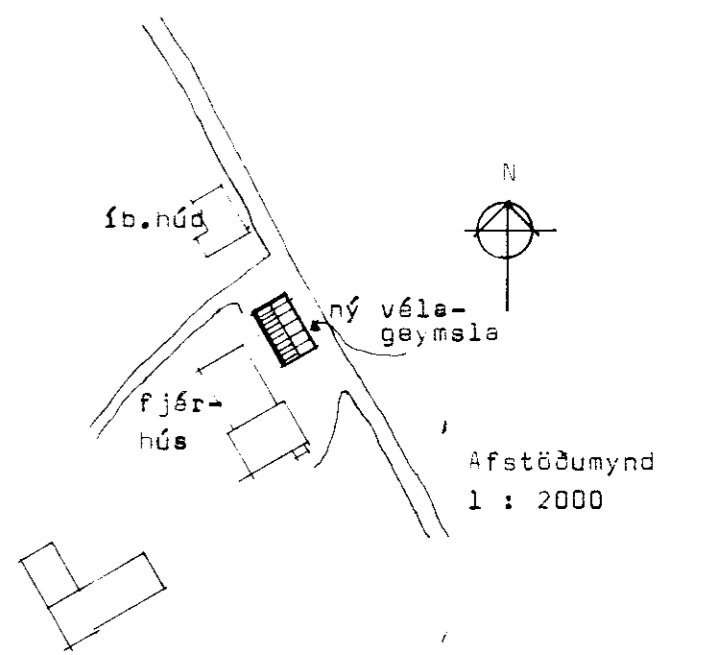


GAFLMYND, norður



SNID A - A

STÆRÐIR.
flatarmál 128m²
rúmmál 396.8m³



ALLAR BREVINGAR ÓMEIÐLÍKAR ÁN SAMÞYKKIS BYGGINGASTOFNUNAR

BL Breytt 2.5.88 ÞB
BYGGINGASTOFNUN LANDBÚNAÐARINS
LAUGAVEGI 120, REYKJAVÍK, SÍMI 25444
LAXÁRVALUR, II, Gnúoverjehr., Árn.,
Vélageymsla, steinsteypt.,
Grunnmynd, útlit og snið.

TEIGN NR. 60-5381
BLAD NR. A 1
MÆLIKVARDI 1:100
DAGSETNING 24.5.88
HANNAD 26.5.88

Hanna Þórunn