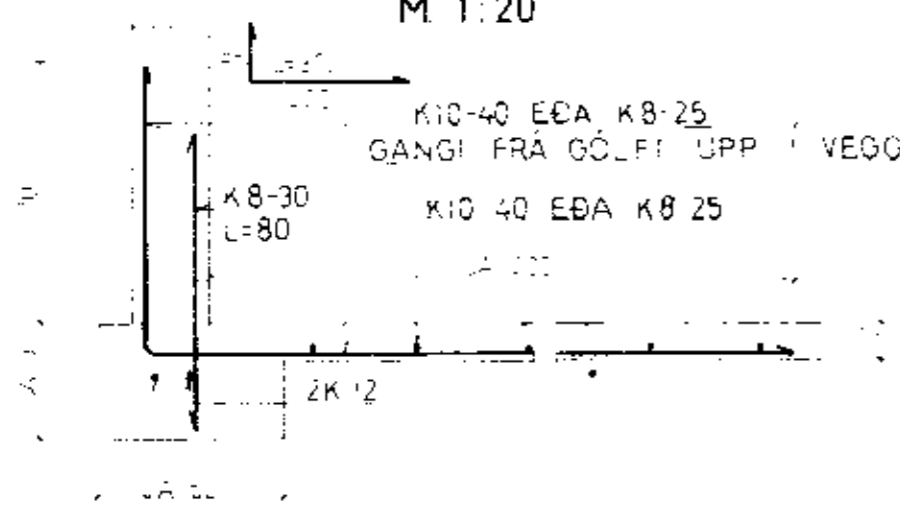
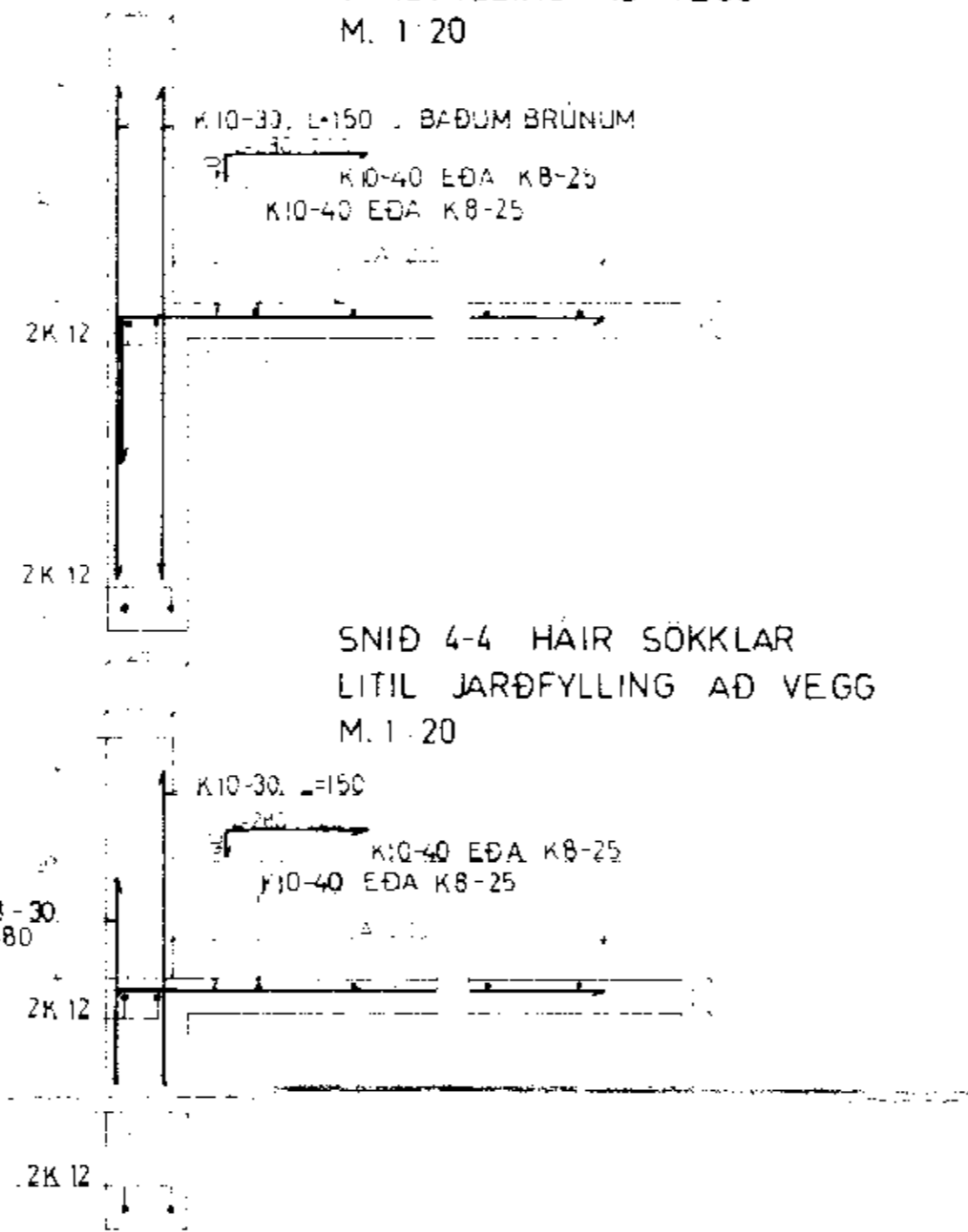


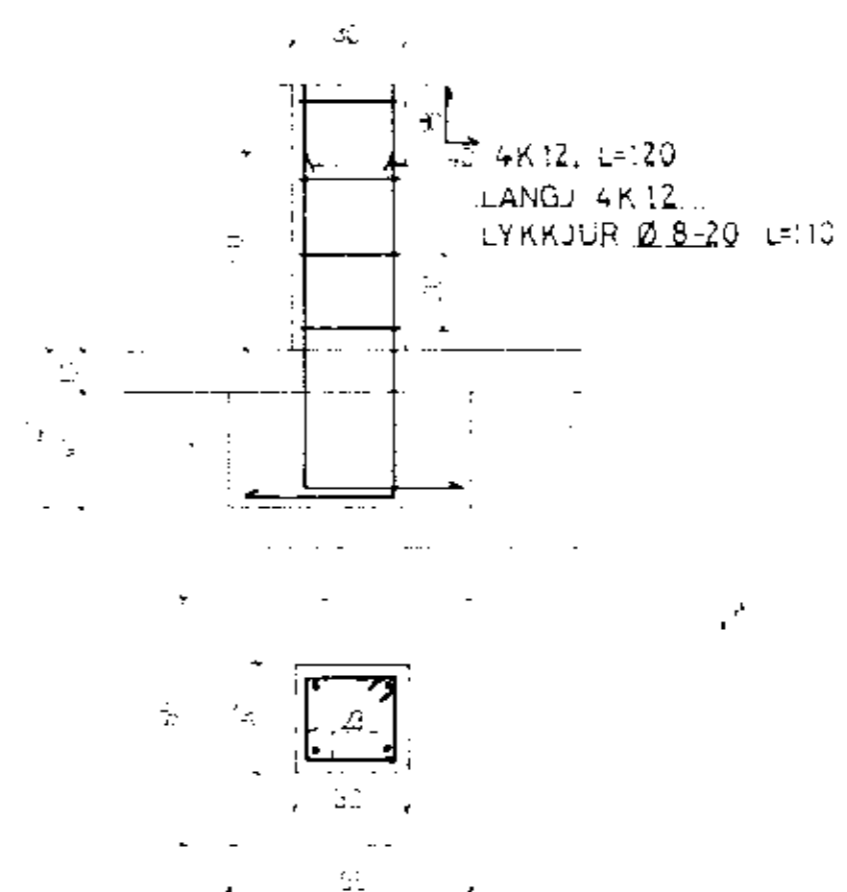
SNID 1-1, LAGIR SÖKKLAR  
JARÐFYLLING AÐ VEGG  
M. 1:20



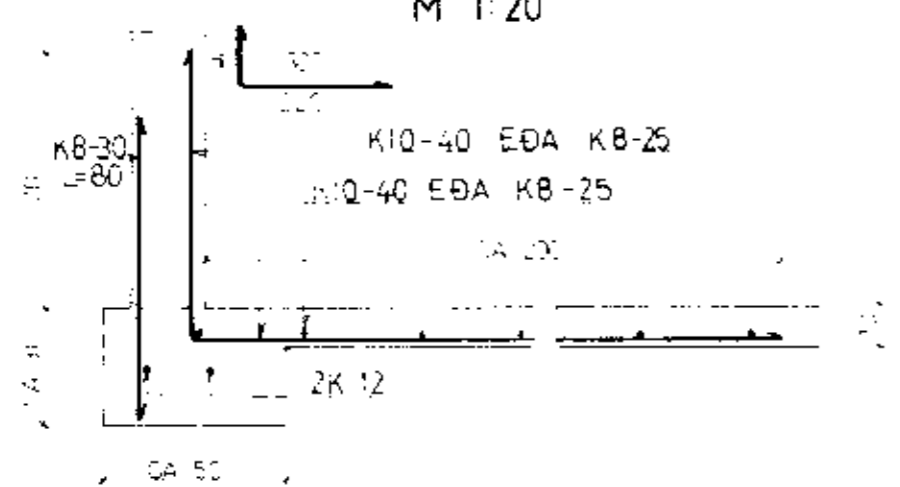
SNID 2-2 HAIR SÖKKLAR  
JARÐFYLLING AÐ VEGG  
M. 1:20



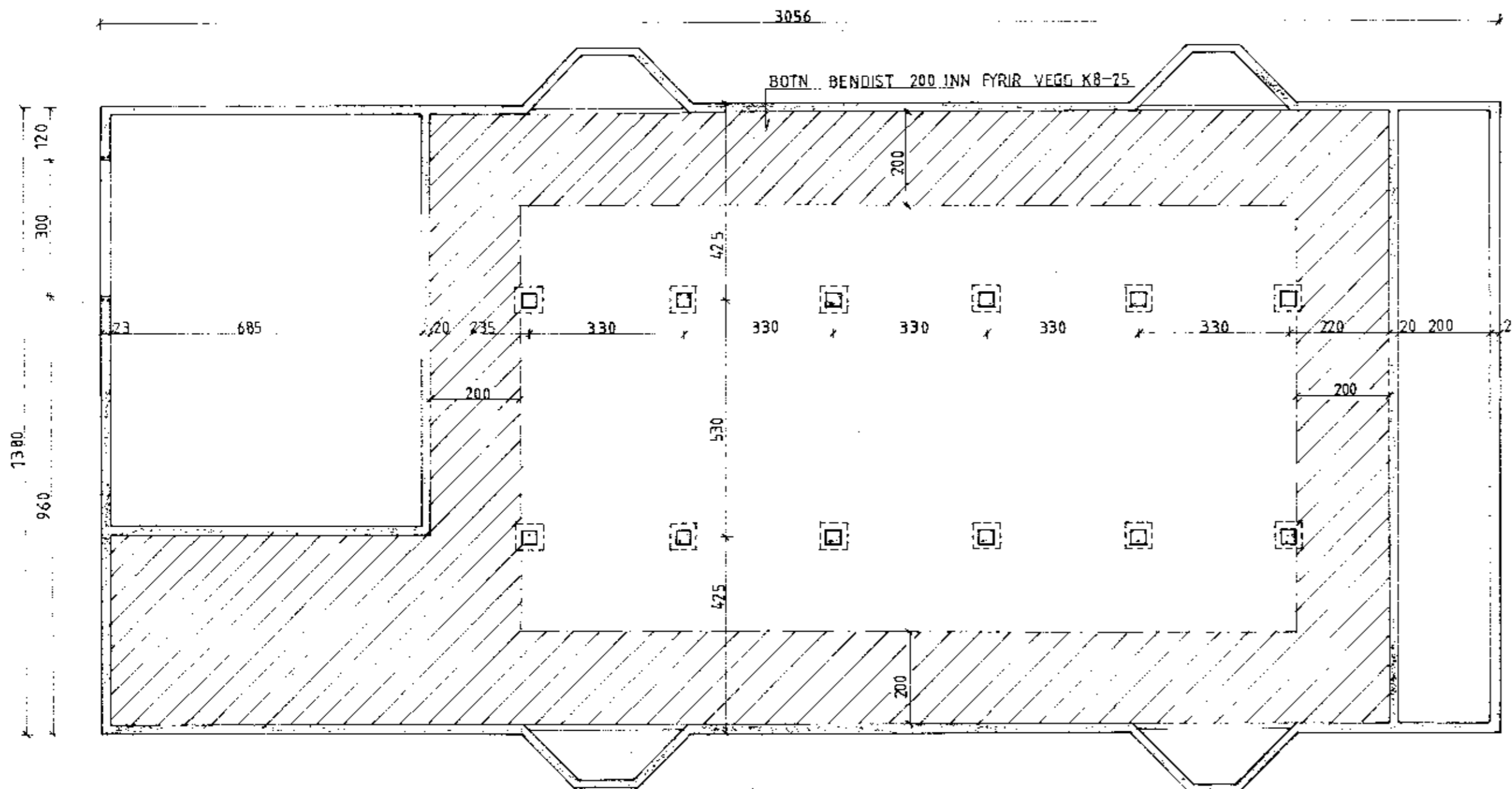
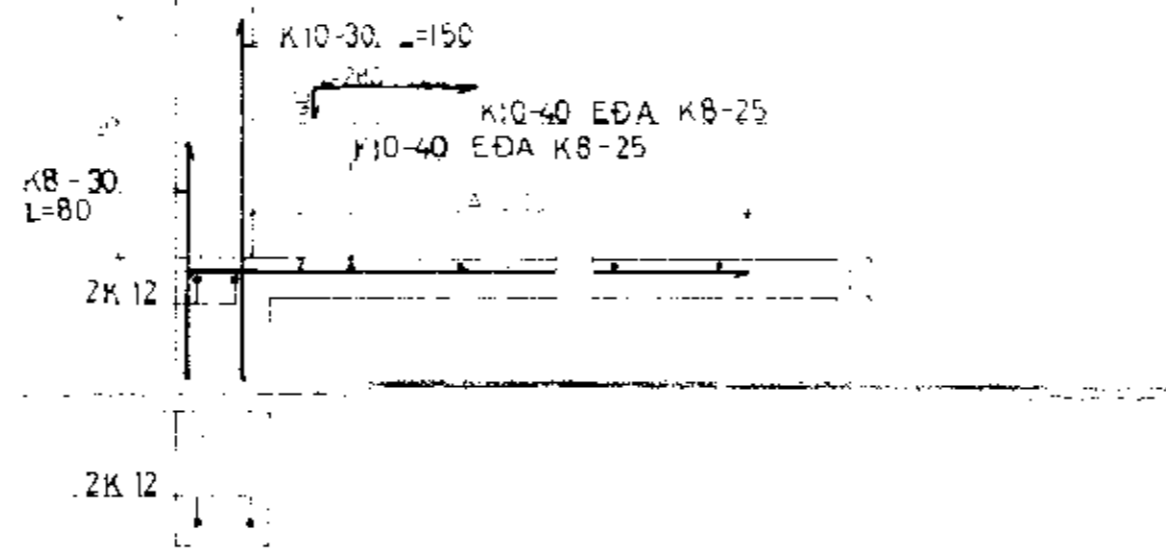
STOÐ MEÐ UNDIRST.  
M. 1:20



SNID 3-3, LAGIR SÖKKLAR  
LITIL JARÐFYLLING AÐ VEGG  
M. 1:20



SNID 4-4 HAIR SÖKKLAR  
LITIL JARÐFYLLING AÐ VEGG  
M. 1:20



- BL. 1 HAUGHÚSBOTN
- 2 FJÓSGÓLF
- 3 HAUGHÚSVEGGIR
- 4 ÞVERBITI B<sub>1</sub>, B<sub>2</sub>
- 5 DELUBRUNNUR
- 6 MJALTABÁS SNID M-H<sub>1</sub>(bitar B<sub>3</sub>)
- 7 ÝMIS SNID
- 8 SNIE Í FJÓSBÁK

SÖKKULGERÐ SKAL VALIN (SNID 1-1, 4-4)  
EFTIR STAÐHATTUM Í SAMRÆÐI VIÐ  
BYGGINGARFULTRÚA

BL10-4494 NORÐURGARÐUR, SKEIÐAHR, ÁRN.			
BL BYGGINGASTOFNUN LANDBÚNAÐARINS (S.25444)			
HAUGHÚSBOTN	Máttv.	Rekn.	
	1:100	Tekn.	
	1:20	Samb.	
Reykjavík 02. '83	Verktönn nr.		
<i>Pjg. Sigvaldason</i>			1
	Seytingar		