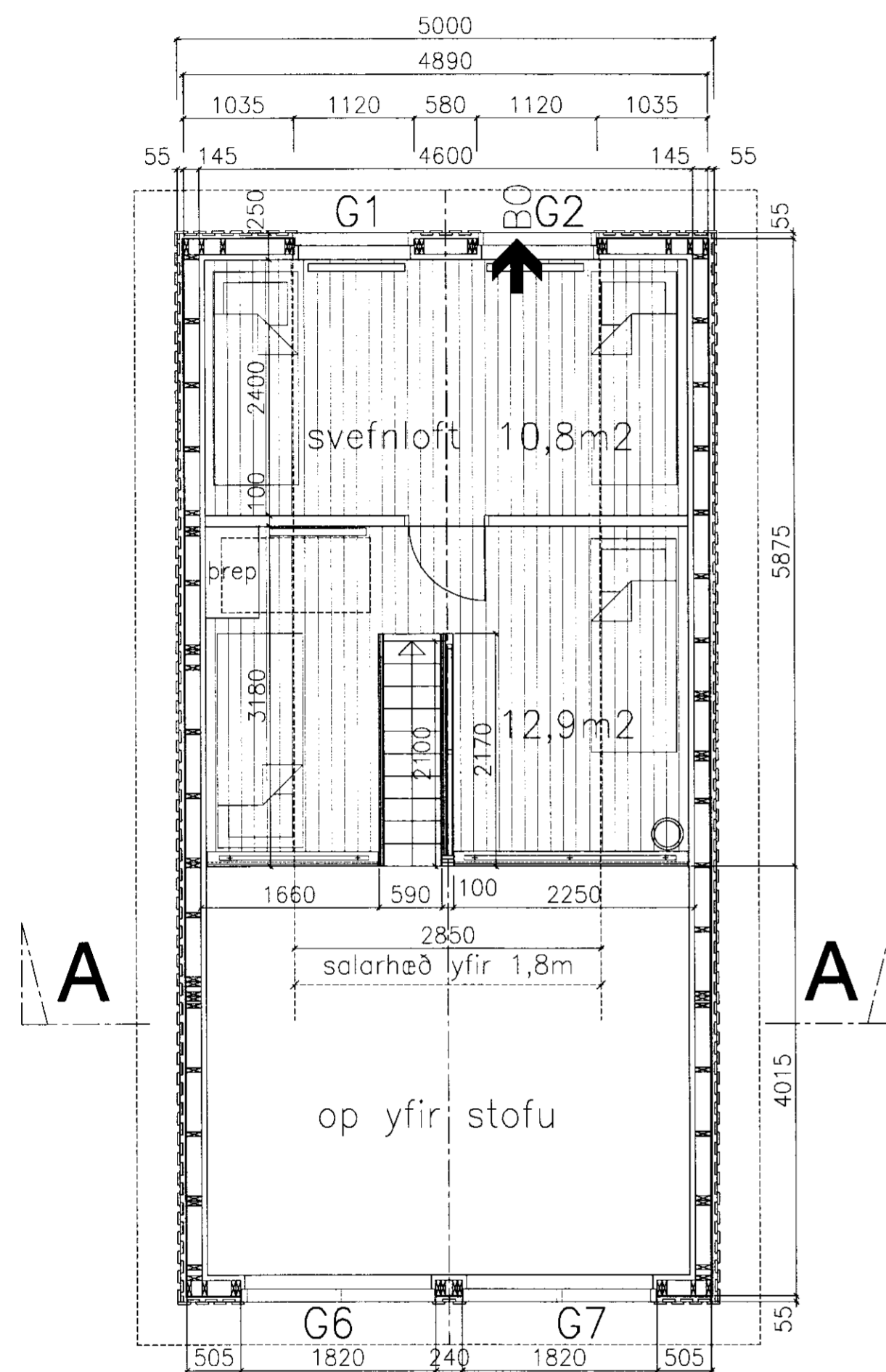
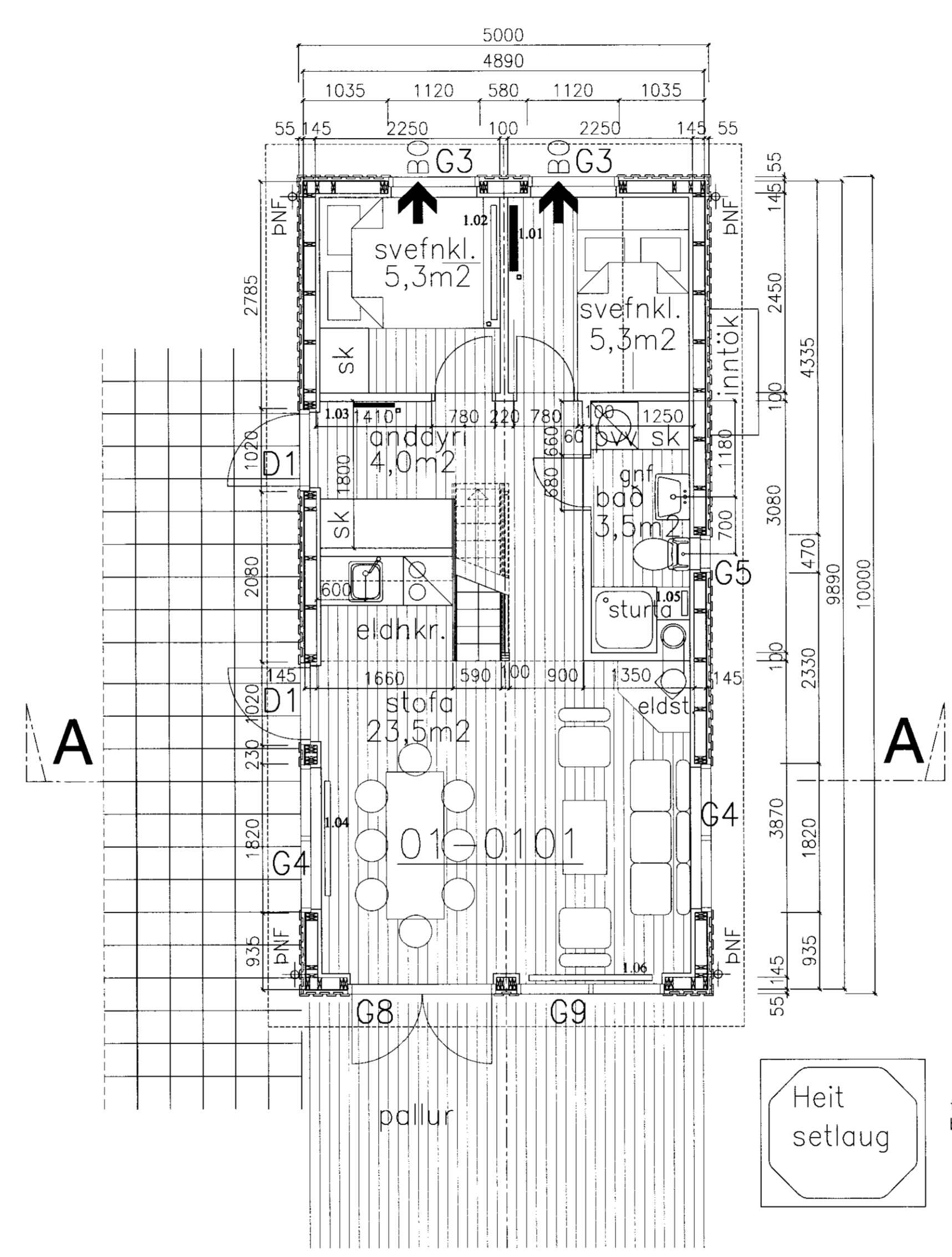


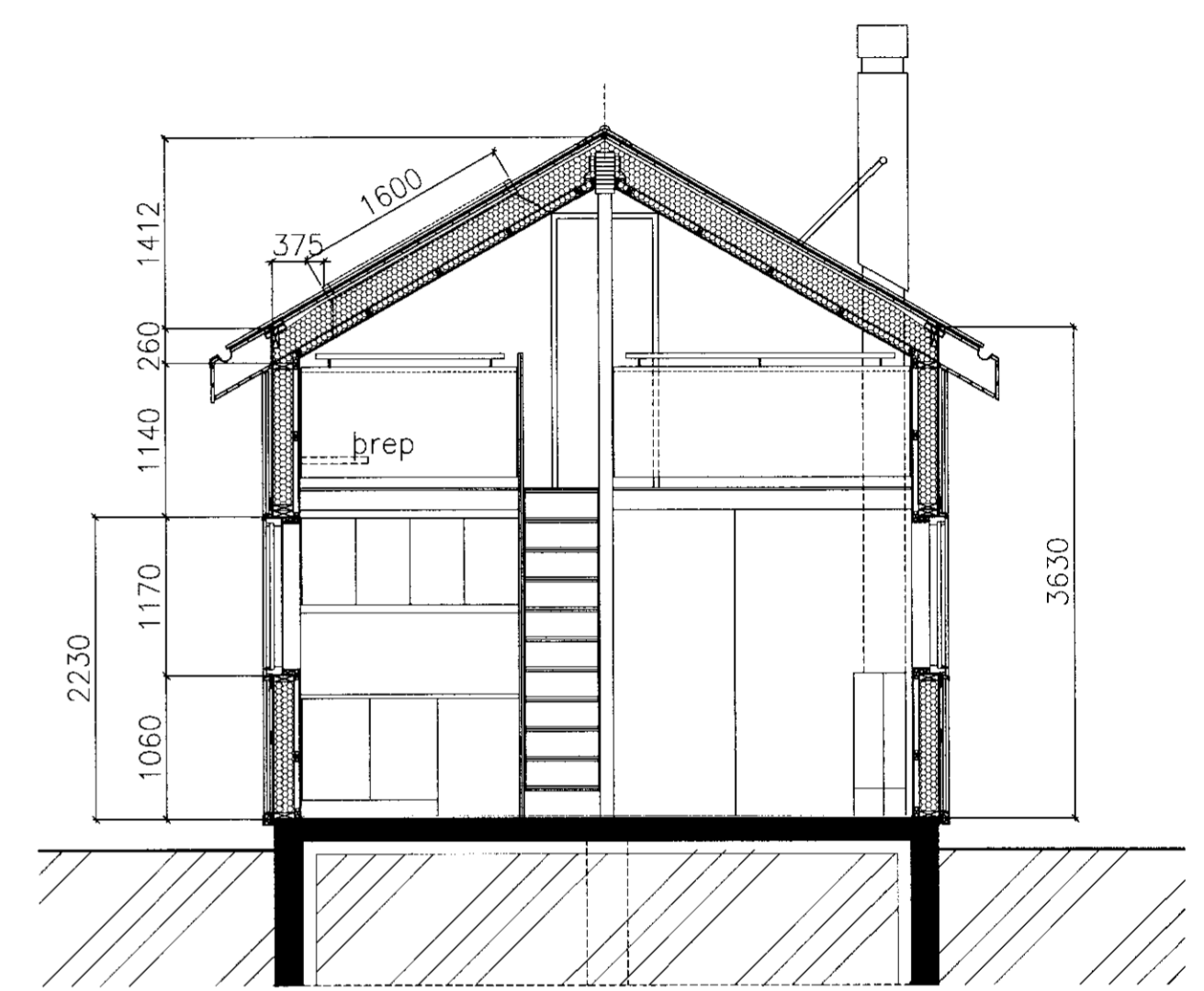
Gudni Þórisson



GRUNNMYND / PALLUR



GRUNNMYND / 1. HÆÐ



SNID A-A

Heit
setlaug

tengd lagnakerfi hússins með læsanlegu loki til öryggis, -
barmur laugar a.m.k. 0,4 m yfir göngusvæði umhverfis hana.

SUMARHÚS Skeiðháholt 2, lóð 01 grunnmyndir, snið	H. GeSÓ	Nr. shh-A04 útg. 12.05.'09
	M. 1:50 (A2)	
	D. 12.05.2009	

Gunnar S. Óskarsson arkitekt FAI kt 180544 4299
Teiknistofa GSÓ ehf Laugavegi 8 101 Reykjavík kt 420502 2140
Vinnustofa Grettisgötu 3a s 551 7980 f 551 7989 netfang geso@simnet.is