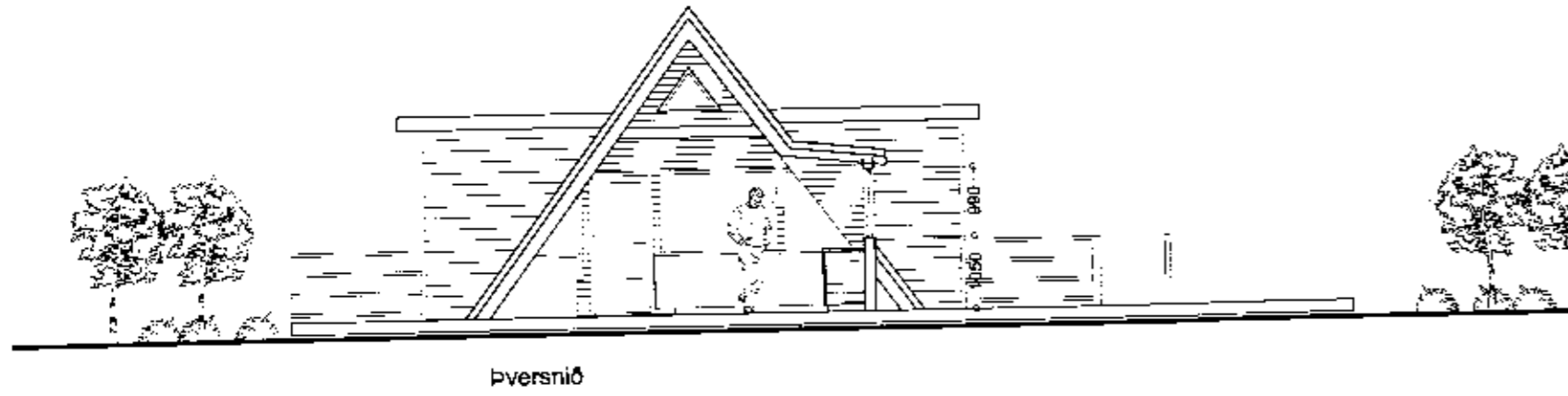
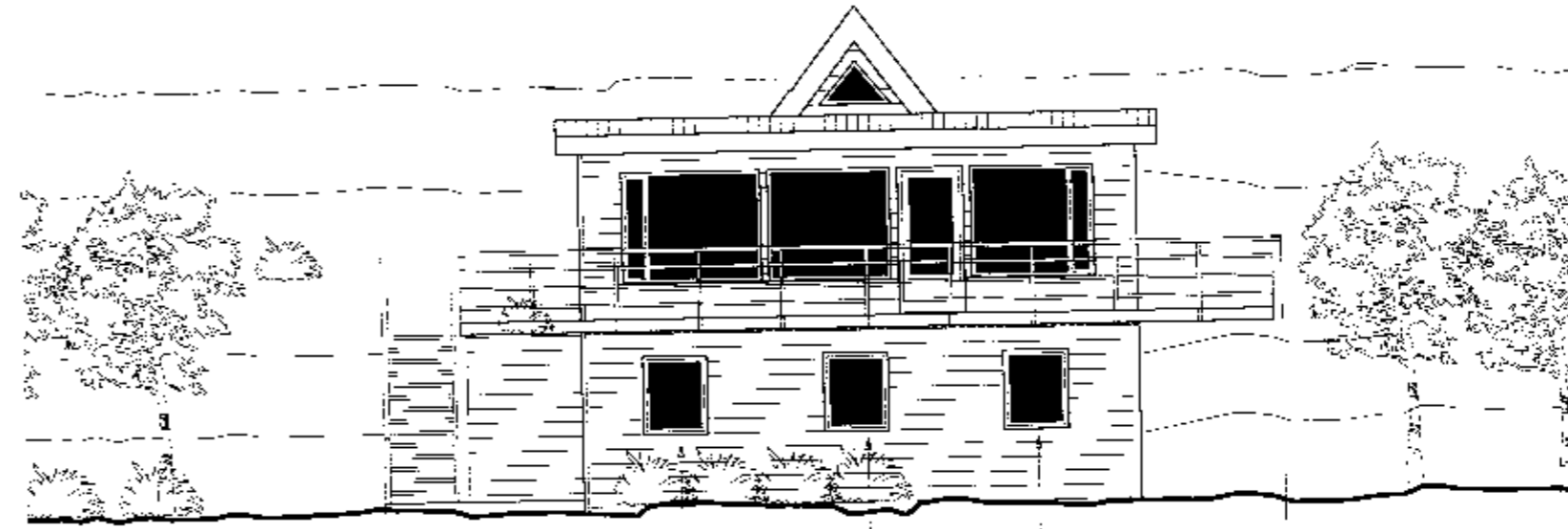


SAMDYKKT
13 SEPT. 2011
Helga Benediktssdóttir
Borgunarlýðgjafi, Landspítali, 101 Reykjavík

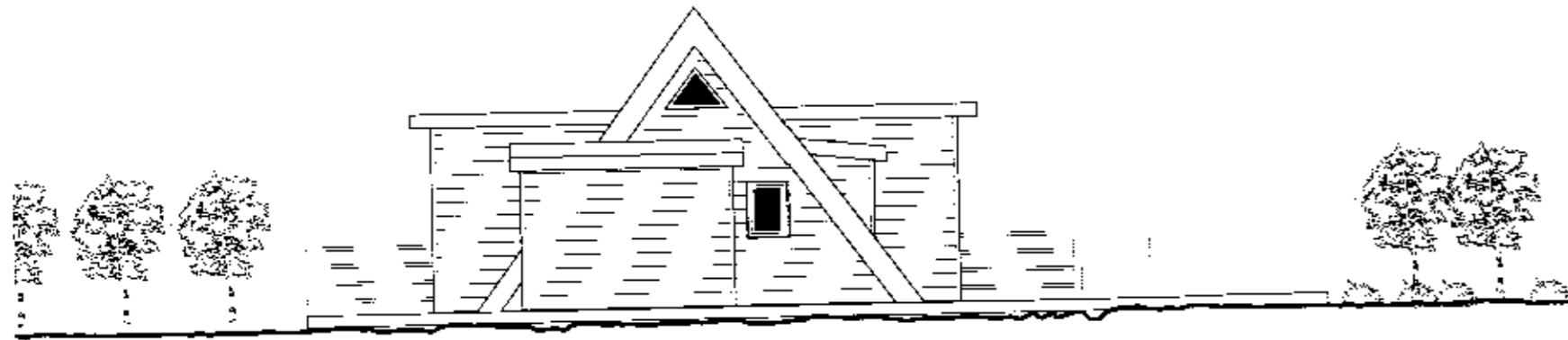
* *Helga Benediktssdóttir*



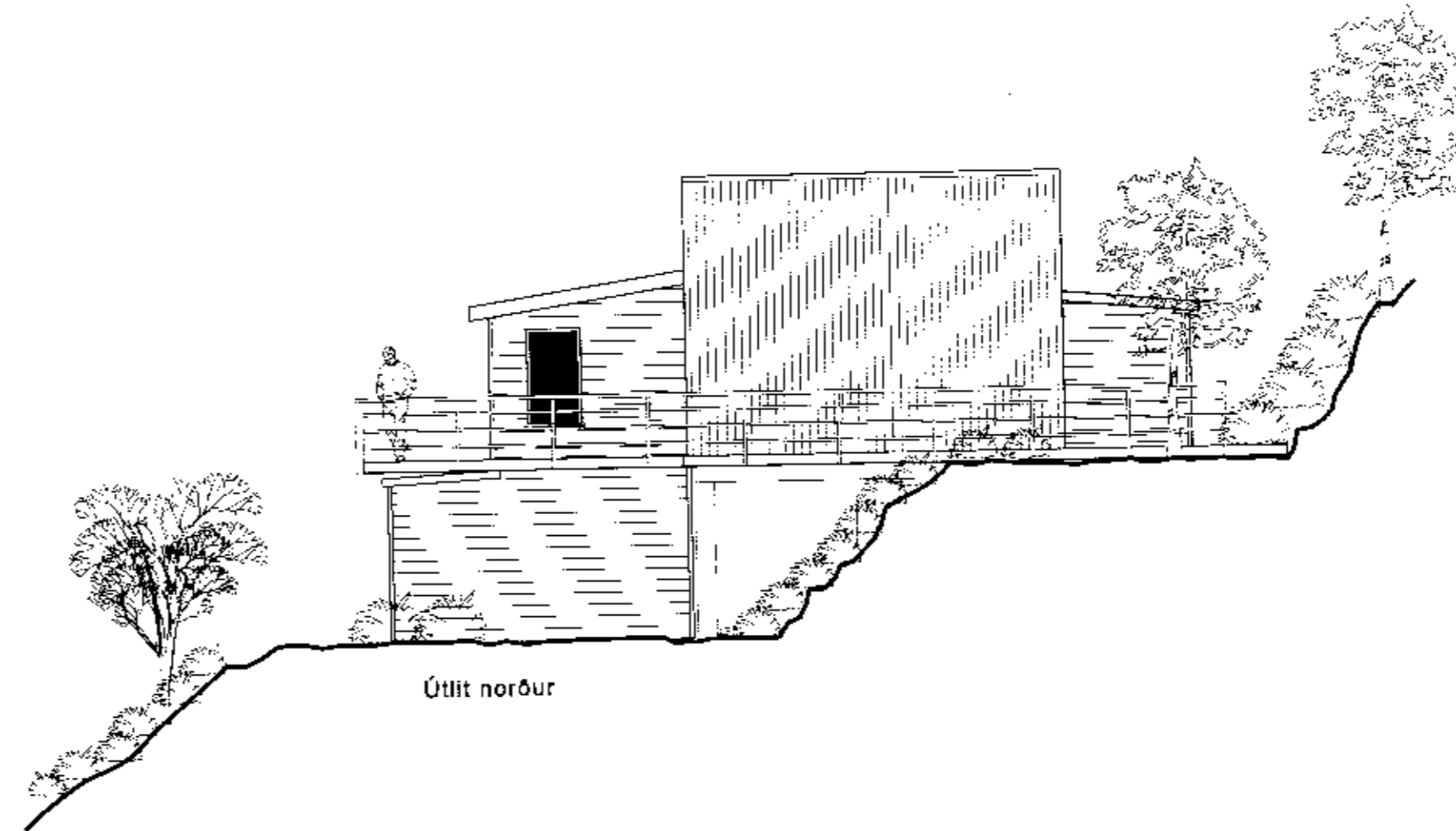
bversnið



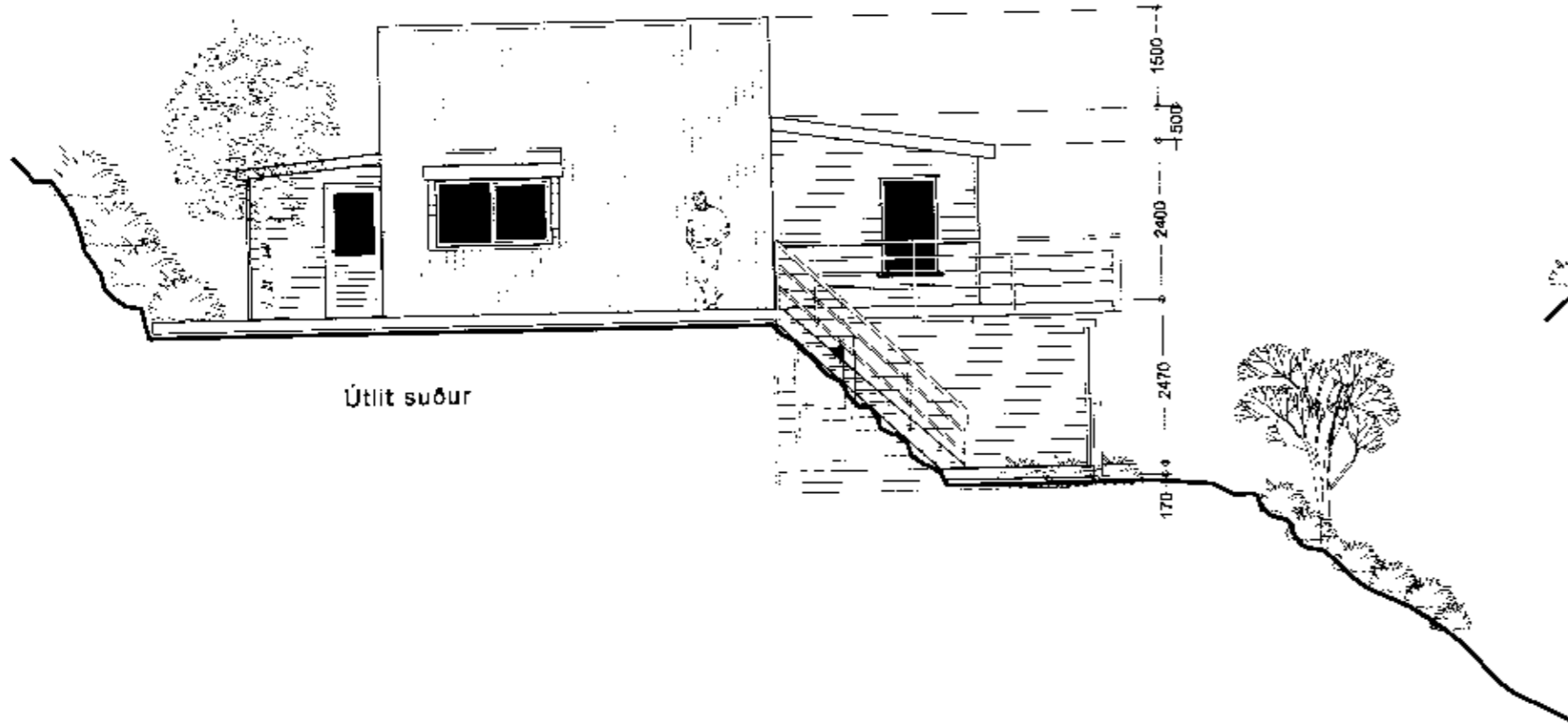
Útlit austur



Útlit vestur



Útlit norður



Útlit suður

vark: **Sumarhús Nesjar 170908**
Þingvallasveit
fastanúmer 220-9637
veknúmer: 11-055
tegund teikningar: **Aðalteikning**
höll teikningar: **Útlit og bversnið**
mælikvæði: 1:100
dagastíning: 26.08.2011
undirskrift hönnuðar:

útgáfuferill: skýring breytingar dags. breytingar

nr. teikningar og útgáfa: **101 B0**

Helga Benediktssdóttir

arkitektur.is

hverfisgata 96 • 101 Reykjavík • sími 562 5020 • fex 582 5086
Kaupangur • 908 Akureyri • sími 402 8727 • fax 461 1507
netfang arkitektur.is@arkitektur.is http://www.arkitektur.is

Elin Kjartansdóttir
Gísli Jón Kristjánsson
Guðmundur Gunnarsson
Haralður Örn Jónsson
Helga Benediktssdóttir
Katrín Guðrúnsson
Páll Tómasson

fa'
fa'
fa'
fa'
fa'
fa'
fa'

kt. 190648-3939

Öll arnot og áritun teikningar af hæg skriflegu leyfi höfundar