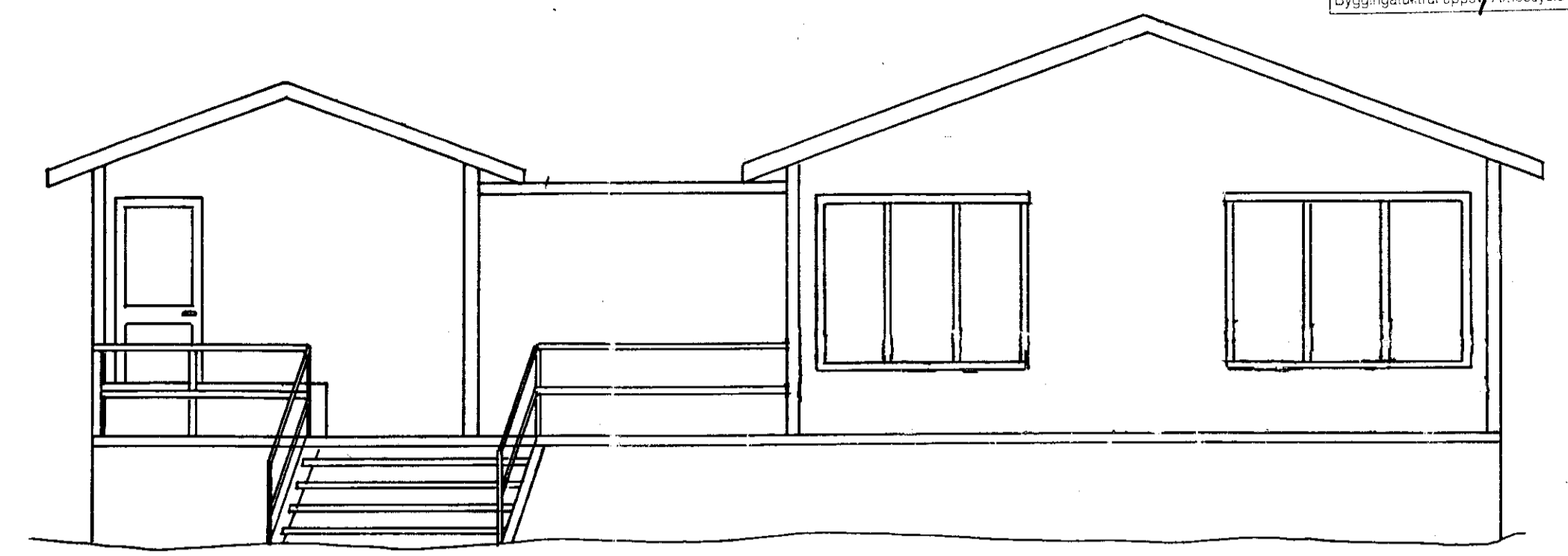
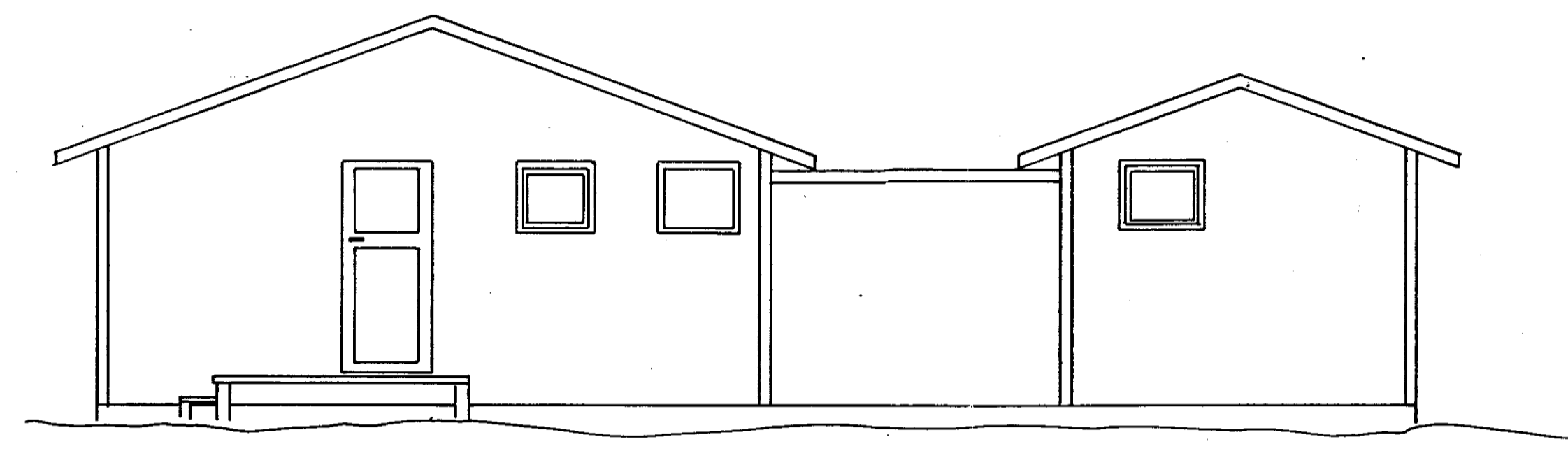


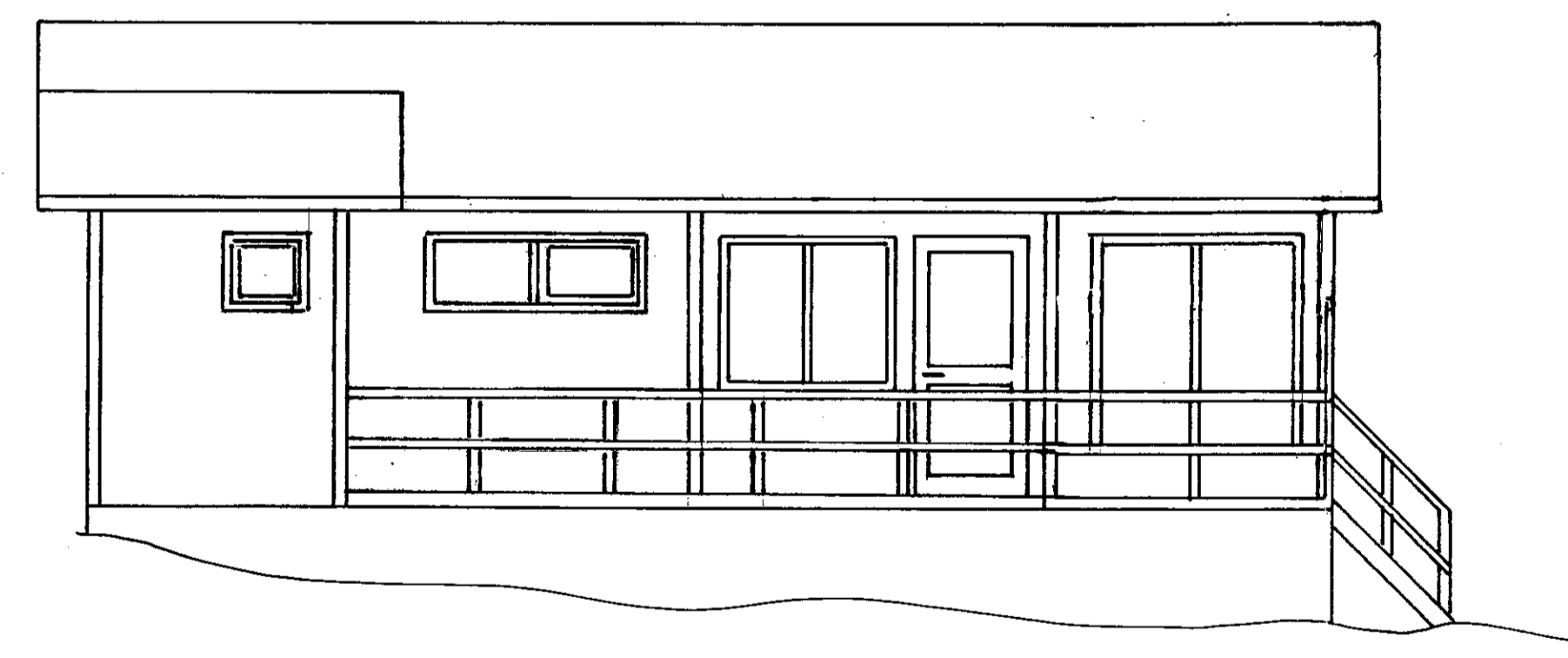
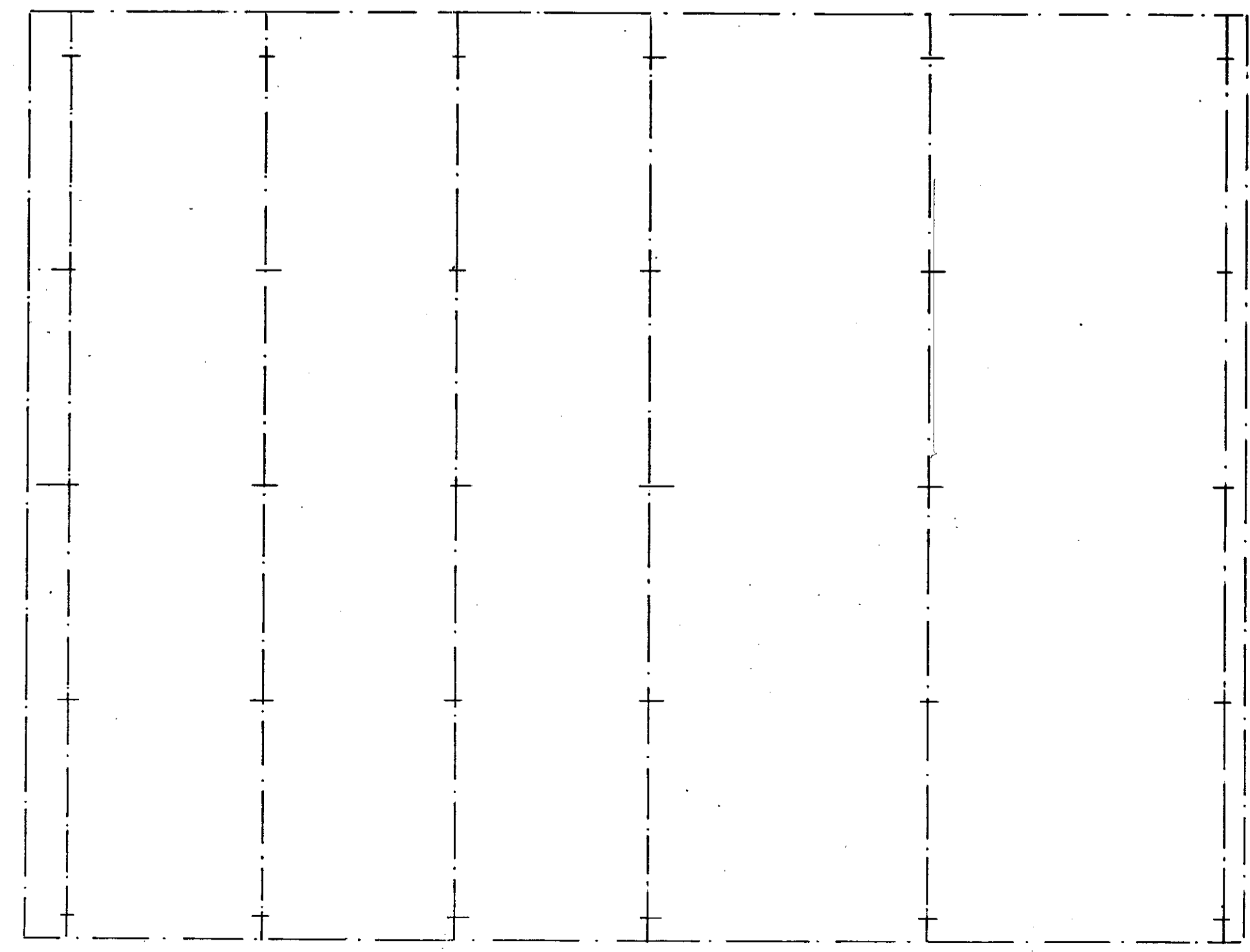
SAMBYKKT  
 06. OKT. 2010  
 Alþjóðlegur  
 Byggingarfræðingur og Vörðun



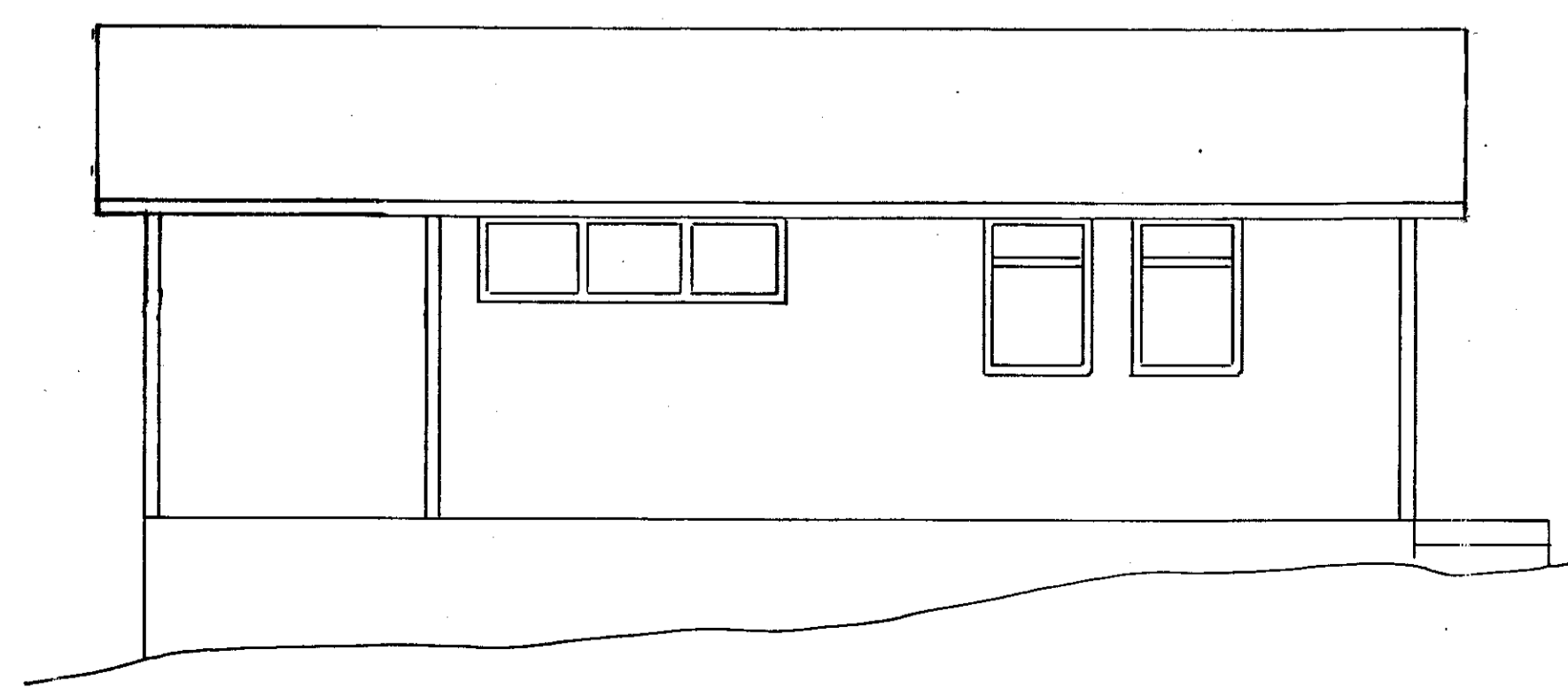
Sudur



Nordur



Vestur



Austur

1 Sept. 2010 SF Stakkun húss um 2.2 x 6.4 m = 14.1 m<sup>2</sup>

Br.	Dags	Sign	Efni
<b>SN SKIPASMÍÐASTÖÐ NJARÐVÍKUR HF.</b>			
Dags Juni 91	Hannað SF	Teiknað	Máliðvarð 1:50
Yfirleitt	Samþykkt af S.R.	Samþykkt af	I stað teikn. nr.
Sumarhúsi i Landi Efri Reykja			NR.
Vioðskiptam. Fridrik E. Dlafsson	Verk nr.		