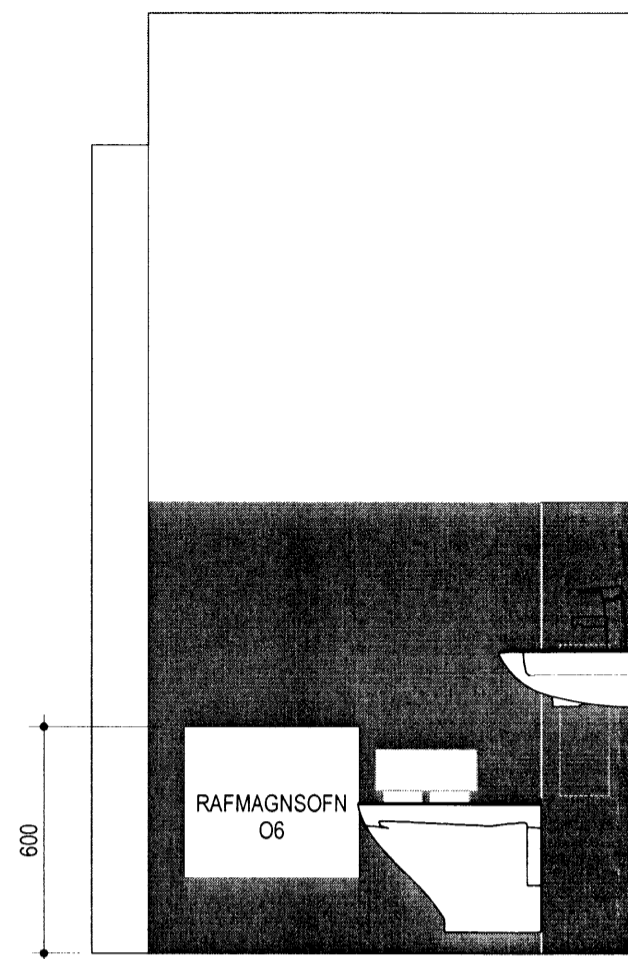
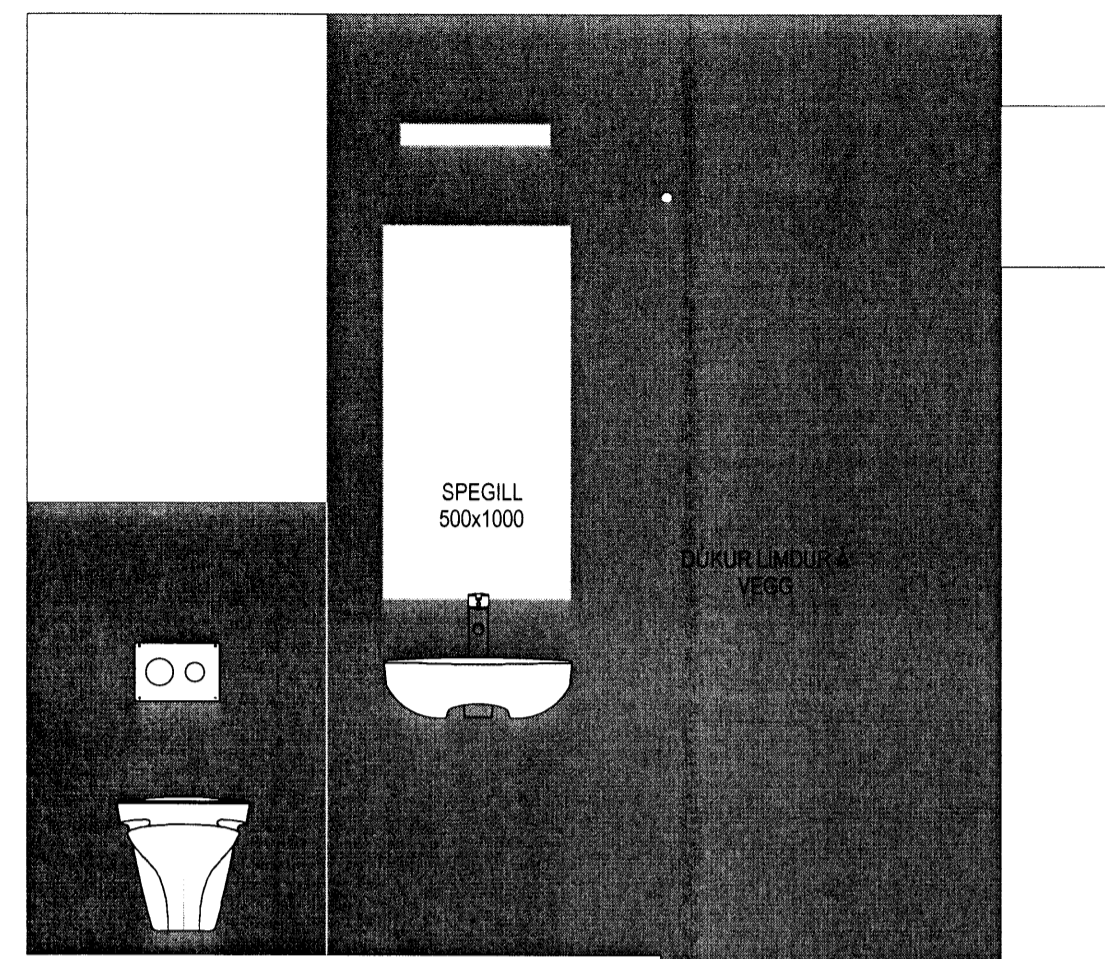


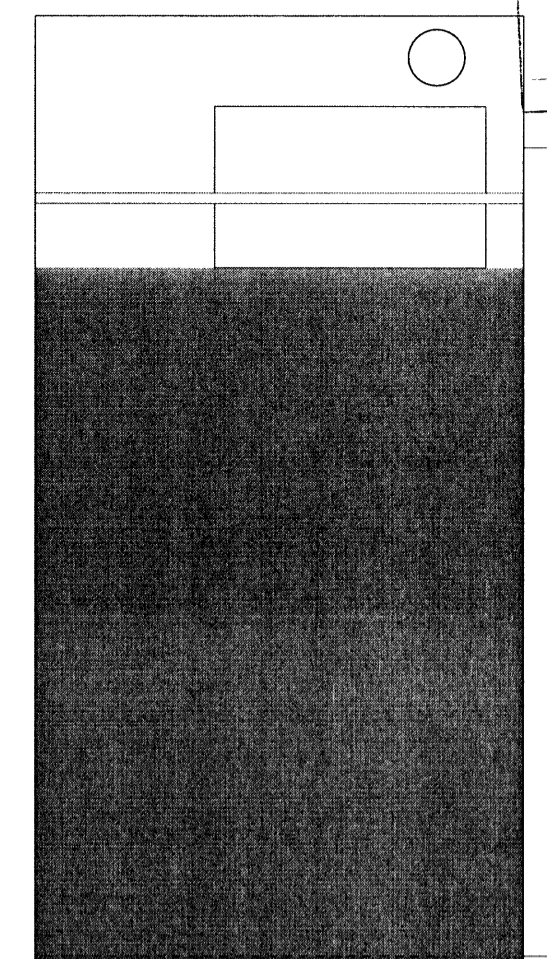
4 ÚTLIT - BAÐHERBERGI 2
1:20



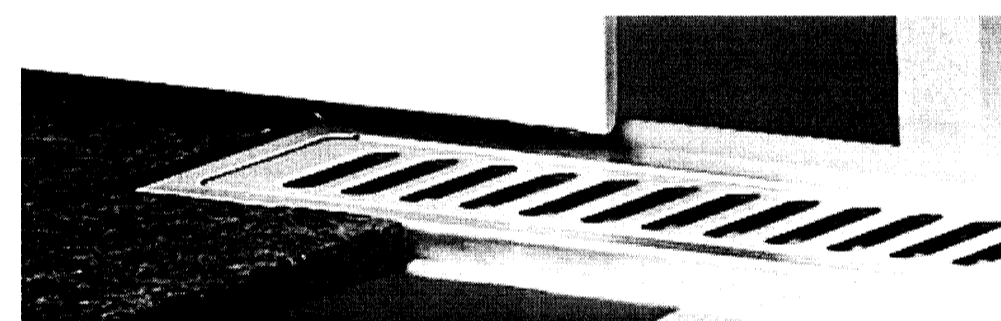
3 ÚTLIT - BAÐHERB
1:20



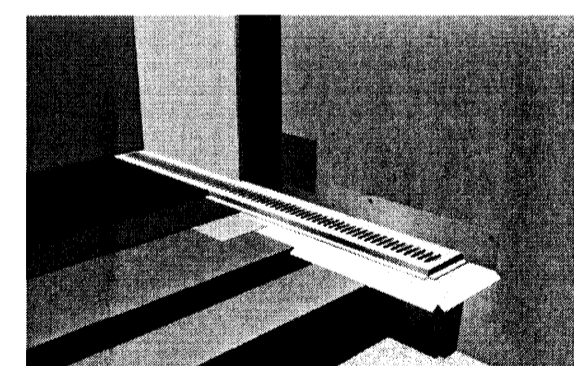
2 BAÐHERBERGI 2
1:20



1 ÚTLIT - BAÐHERB
1:20



[1] Construction principle
 Gufuskipting og slóðun



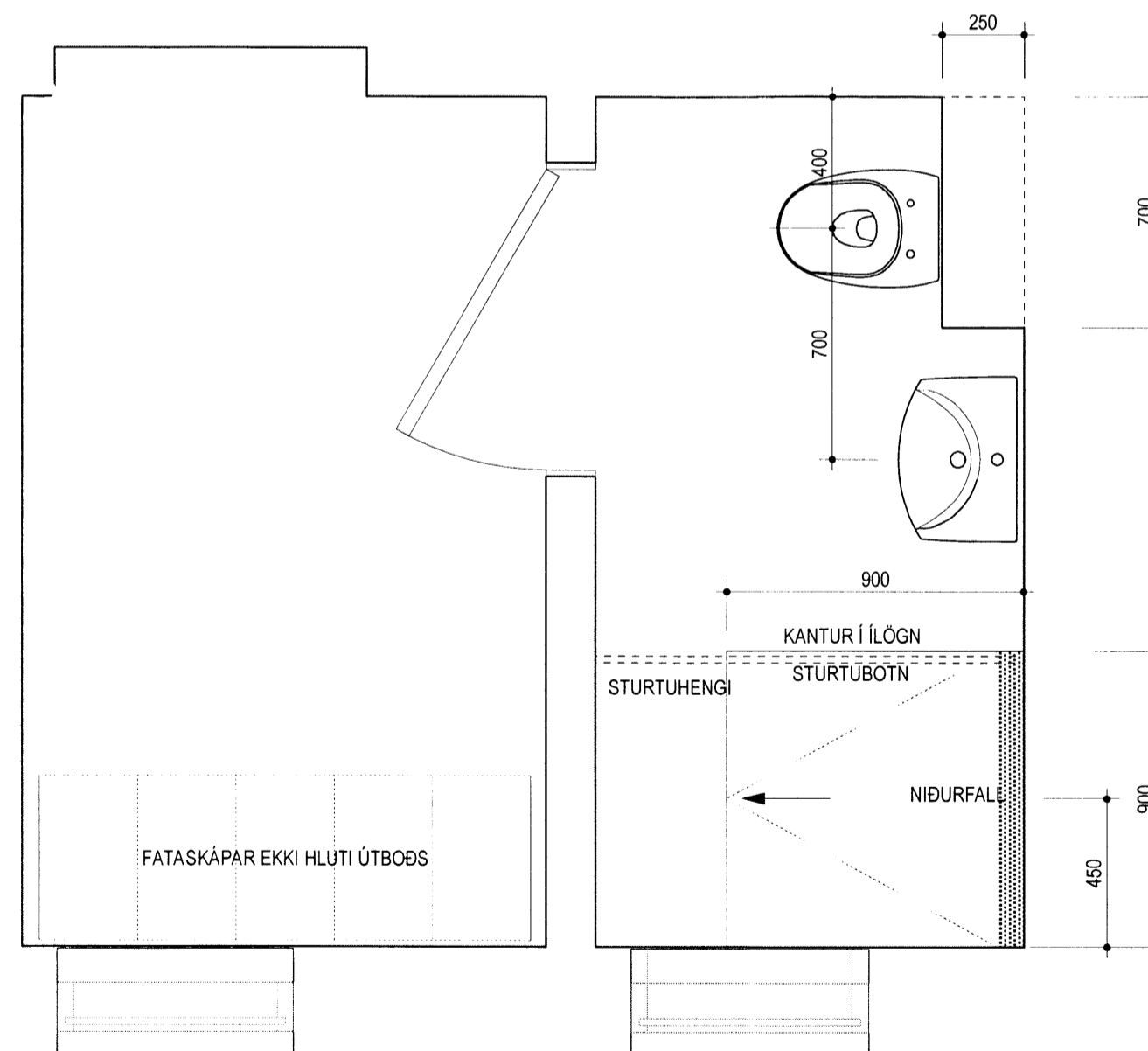
Instructions for floor construction
 Concrete on stable concrete base. Levelling course in concrete or other suitable levelling mass carried out with slope towards the drain, waterproofing system, stone/tile surface.

Instructions for wall construction
 The brick/plastered or light partition with sheet-steel casing approved for wet rooms, waterproofing system, stone/tile surface.

Waterproofing system
 Lubrication membrane with sealing/reinforcement.

Materials
 All materials used must be approved for the purpose and the work must be carried out in accordance with the supplier's instructions.

SKÝRINGARMYND



5 GRUNNMYND BAÐHERBERGI OG BÚNINGSAÐSTAÐA
1:20

Breyting	Dagsetning	Skýring
-	-	-
-	-	-
-	-	-

- Ámi Kjartansson arkitekt FAI kt: 040352-3099
- Bæring Bjarnar Jónsson arkitekt FAI kt: 020464-5509
- Johannes Þórðarson arkitekt FAI kt: 121057-5039
- Sigbjörn Kjartansson arkitekt kt: 121258-2269
- Sigurður Halldórsson arkitekt FAI kt: 100857-2009

ÞJÓNUSTUHÚS
ÞJÓÐGARÐURINN ÞINGVÖLLUM
NÝBYGGING

INNRETTINGAR		SÉRUPPDRÁTTUR
Breyting:	Teikn.nr.: A75.02	GLÁMA·KÍM
Útgáfudagur: 25.04.2014	Mkv.: 1:20	
Verkfr.: 1207034	Teikn. ÖM	Yfirl. -

Arkitektar Laugavegi 164 ehf, 105 Reykjavík
 s: 530-8100, f: 530-8101, kt: 560 496 2739
 glamakim@glamakim.is, www.glamakim.is