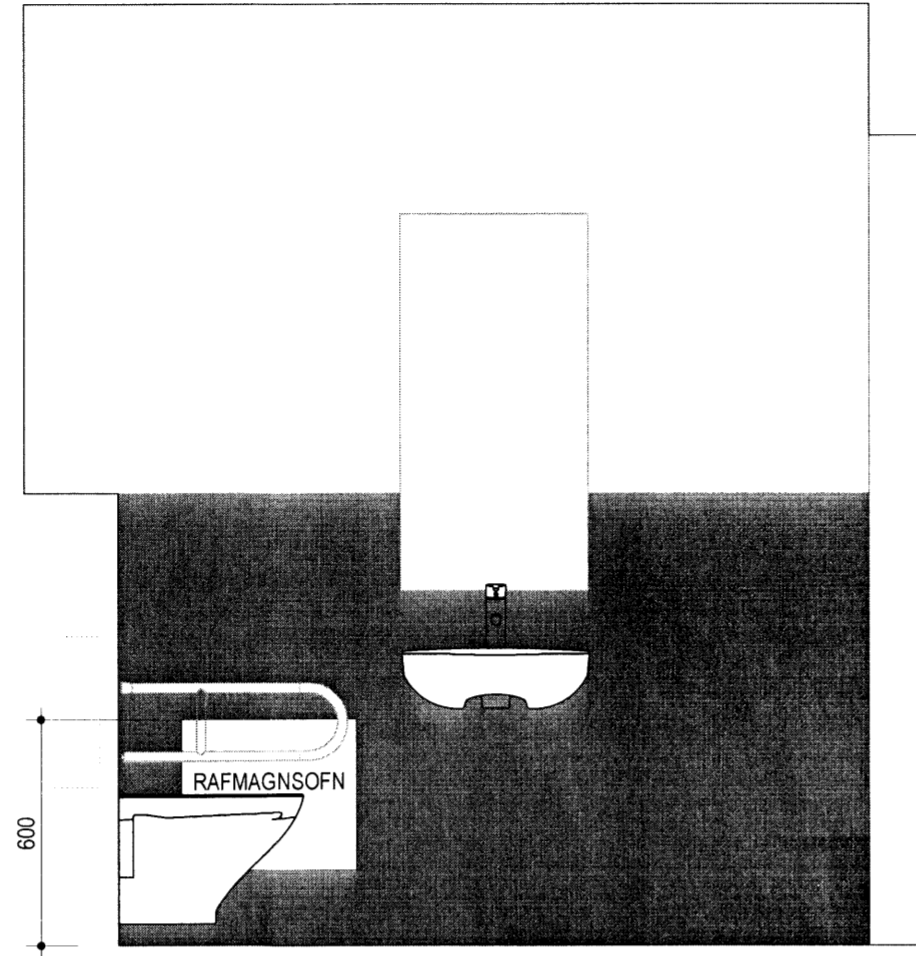
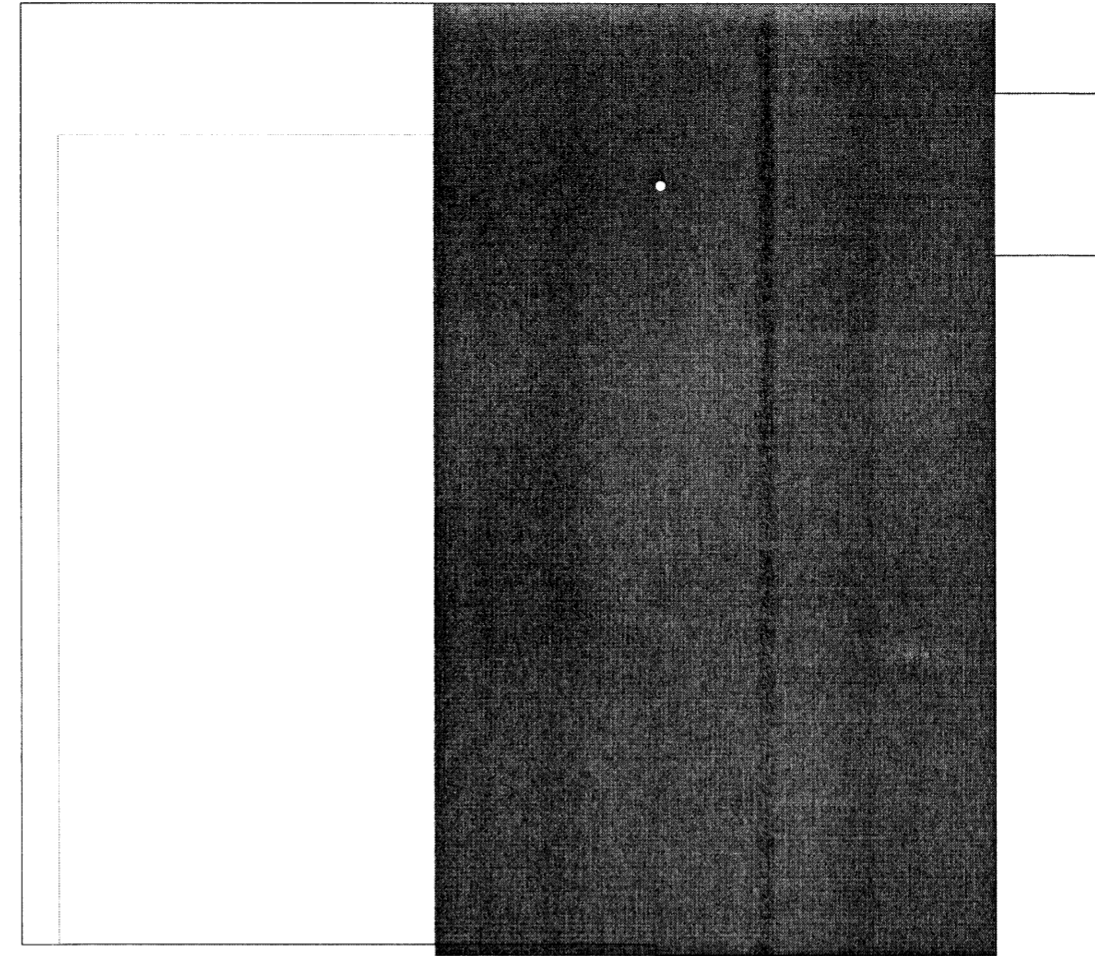


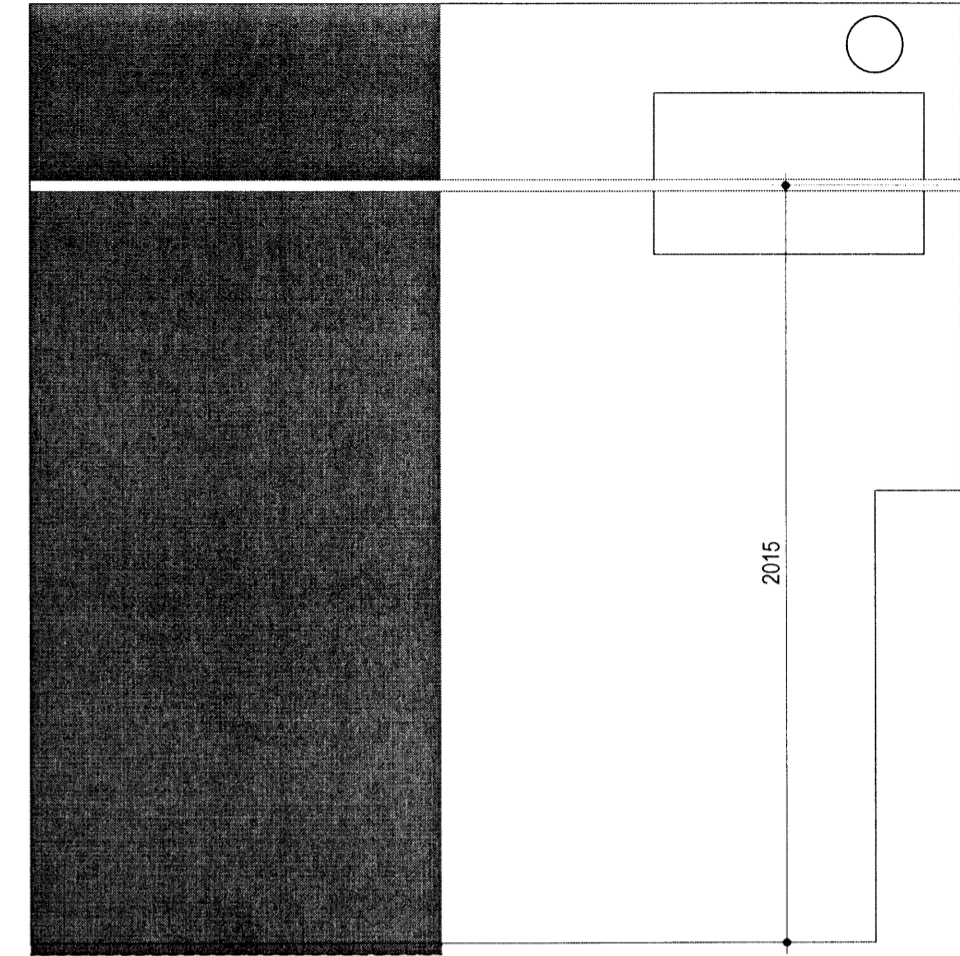
4 ÚTLIT  
1:20



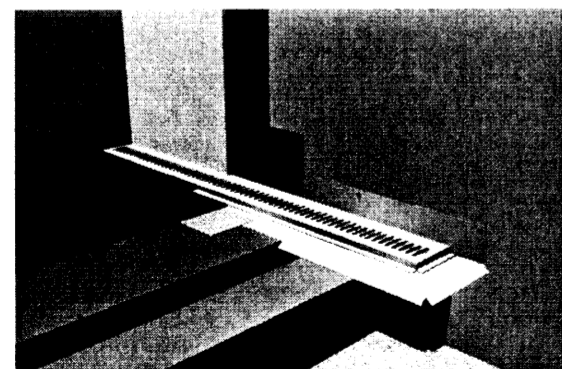
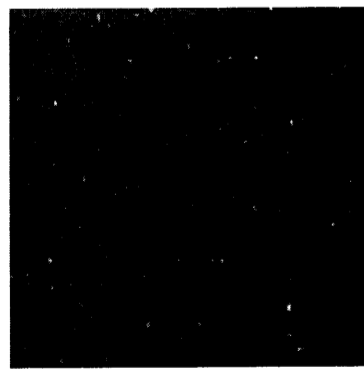
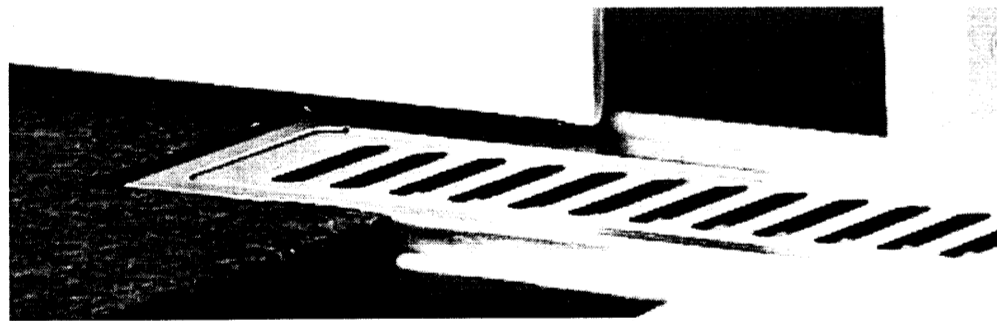
3 ÚTLIT  
1:20



2 ÚTLIT  
1:20



1 ÚTLIT  
1:20

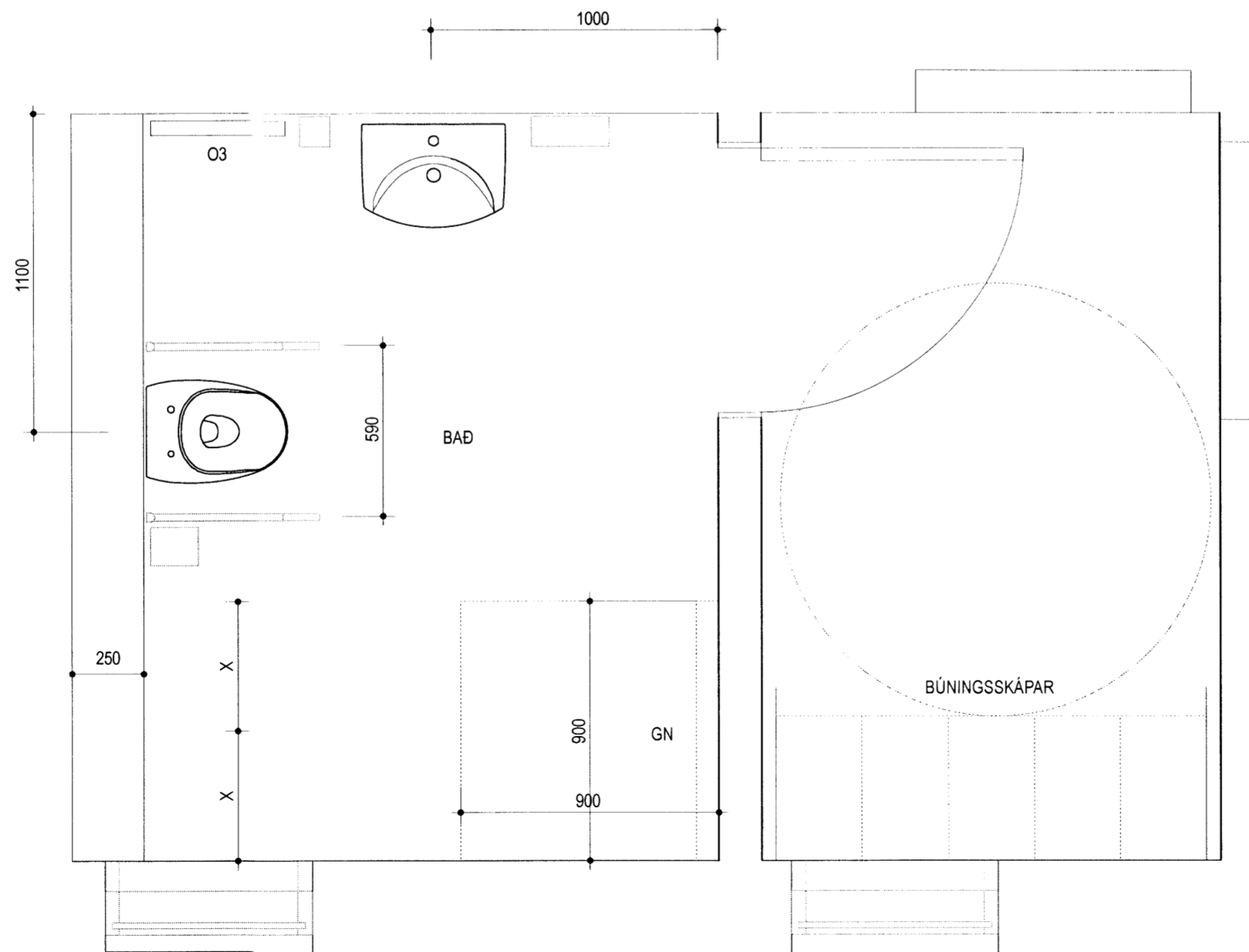


**Instructions for floor construction**  
 Concrete on stable concrete base. Levelling course in concrete or other suitable levelling mass carried out with slope towards the drain, waterproofing system, stone/tile surface.

**Instructions for wall construction**  
 The brick/plastered or light partition with sheet-steel casing approved for wet rooms, waterproofing system, stone/tile surface.

**Waterproofing system**  
 Lubrication membrane with sealing/reinforcement.

**Materials**  
 All materials used must be approved for the purpose and the work must be carried out in accordance with the supplier's instructions.



5 GRUNNMYND - BAÐHERBERGI / BÚNINGSHERBERGI  
1:20

Breyting	Dagsetning	Skýring
-	-	-
-	-	-

Ámi Kjartansson arkitekt FAI	kt: 040352-3099
Bæring Bjarnar Jónsson arkitekt FAI	kt: 020464-5509
Jóhannes Þórðarson arkitekt FAI	kt: 121057-6039
Sighjón Kjartansson arkitekt	kt: 121258-2269
Sigurður Halldórsson arkitekt FAI	kt: 100857-2009

ÞJÓNUSTUHÚS ÞJÓÐGARÐURINN Á ÞINGVÖLLUM NÝBYGGING		SÉRUPPDRÁTTUR
<b>VOTKJARNAR</b>		
Breyting:	Teikn.nr.:	
	<b>A75.01</b>	
Útgáfud.:	Mkv.:	1:20
25.04.2014		
Verkar:	Teikn.:	Yfir.:
1207034	ÓM	-
Arkitektor Laugavegi 164 ehf, 105 Reykjavík s: 530-8100, f: 530-8101, kt: 560 496 2739 glamakim@glamakim.is, www.glamakim.is		