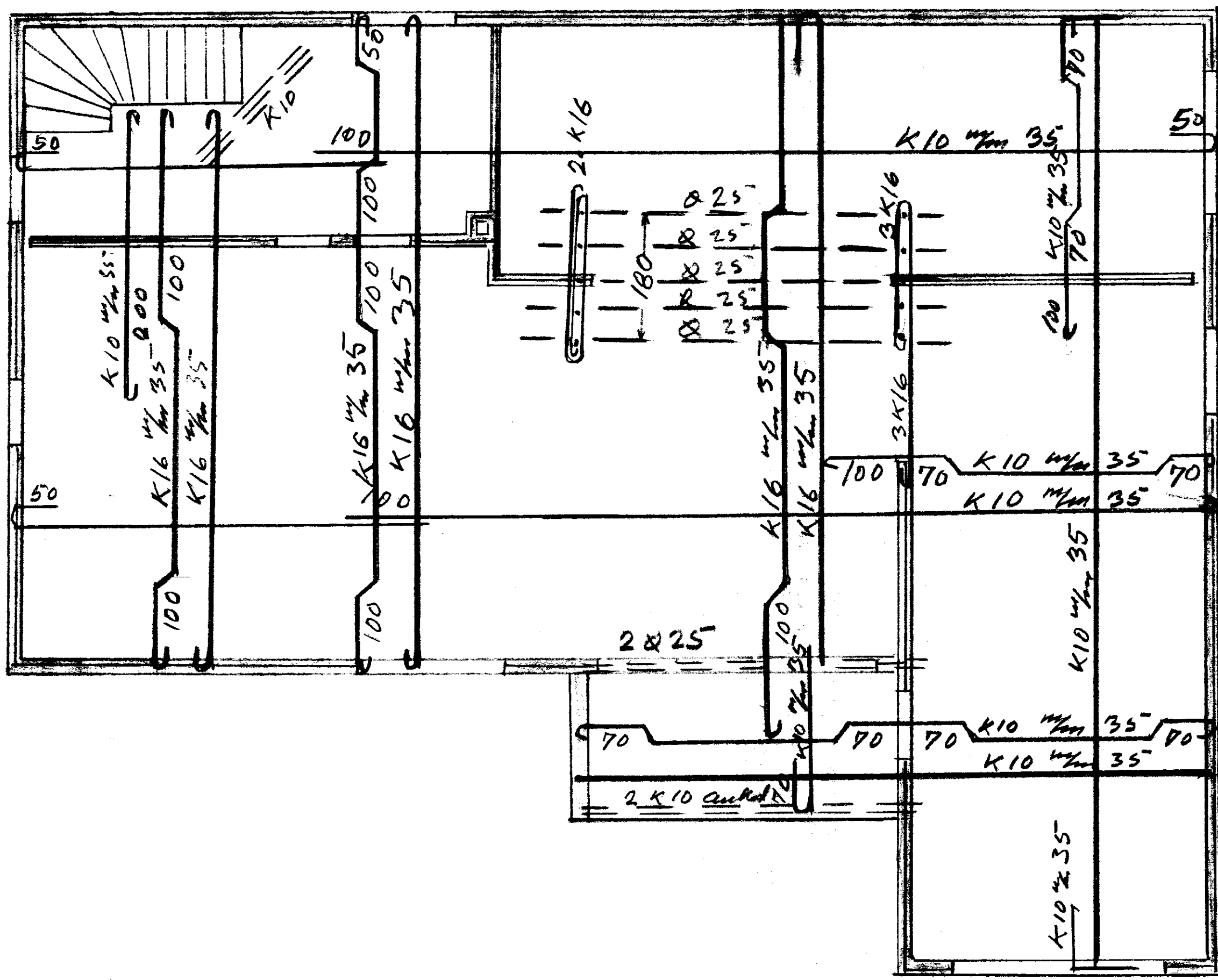


Syfri gegnislölar Loft yfir Kjallara 1:50

6L2.



stigaplata = 12  
 járn K10 4mm 17i +  
 járn í vegg  
 = K8 4mm 25 i +  
 aukalega yfir  
 glugga = 2K10

plata = 16cm

Járn:  
 4 Ø 25 L = 9m  
 70 K16 L = 9m  
 90 K10 L = 9m  
 40 K10 L = 12m

í vegg  
 110 K8, L = 9m

16.3.72

*Handwritten signature*