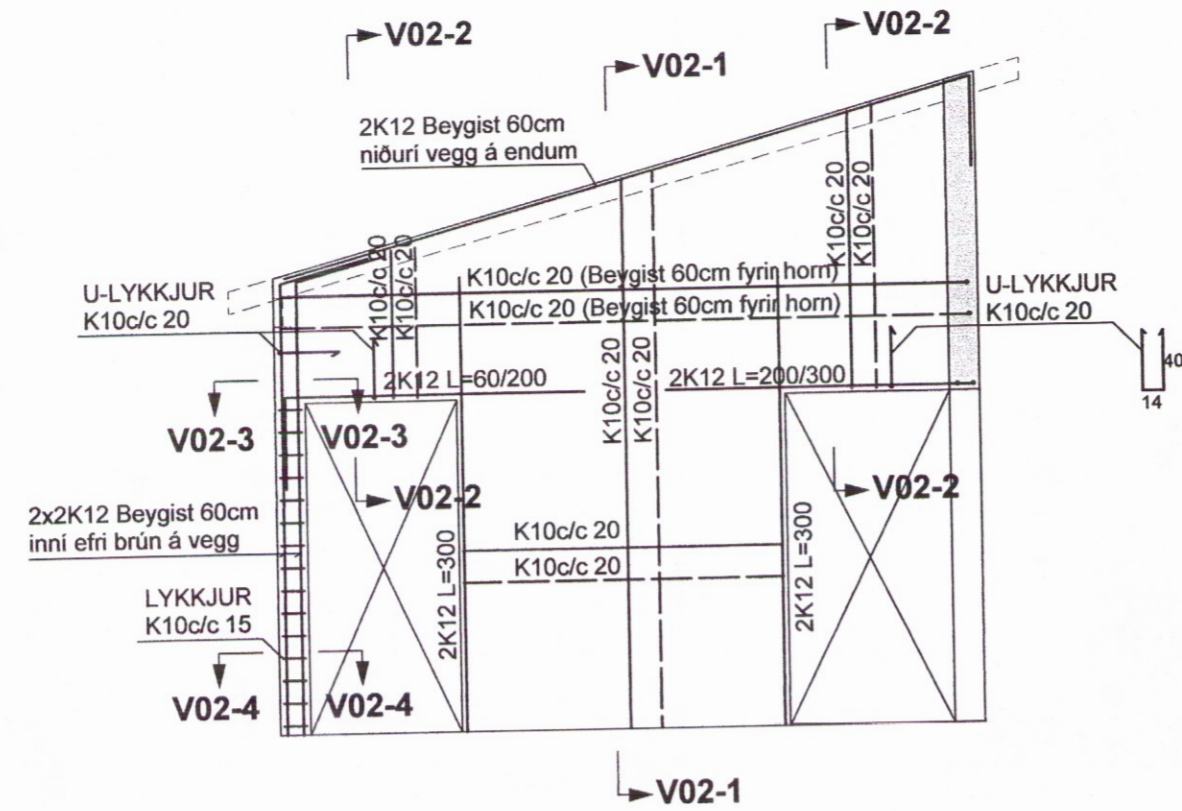
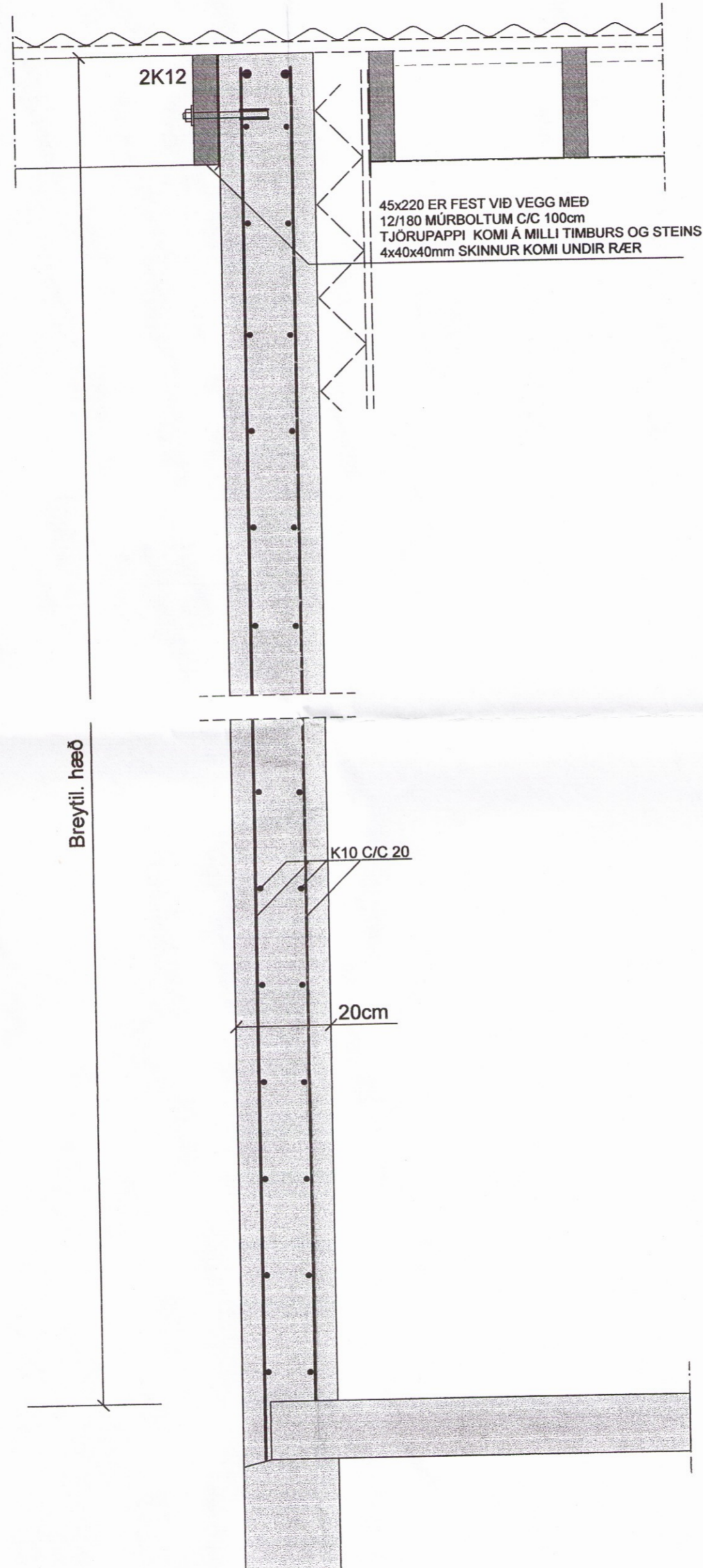


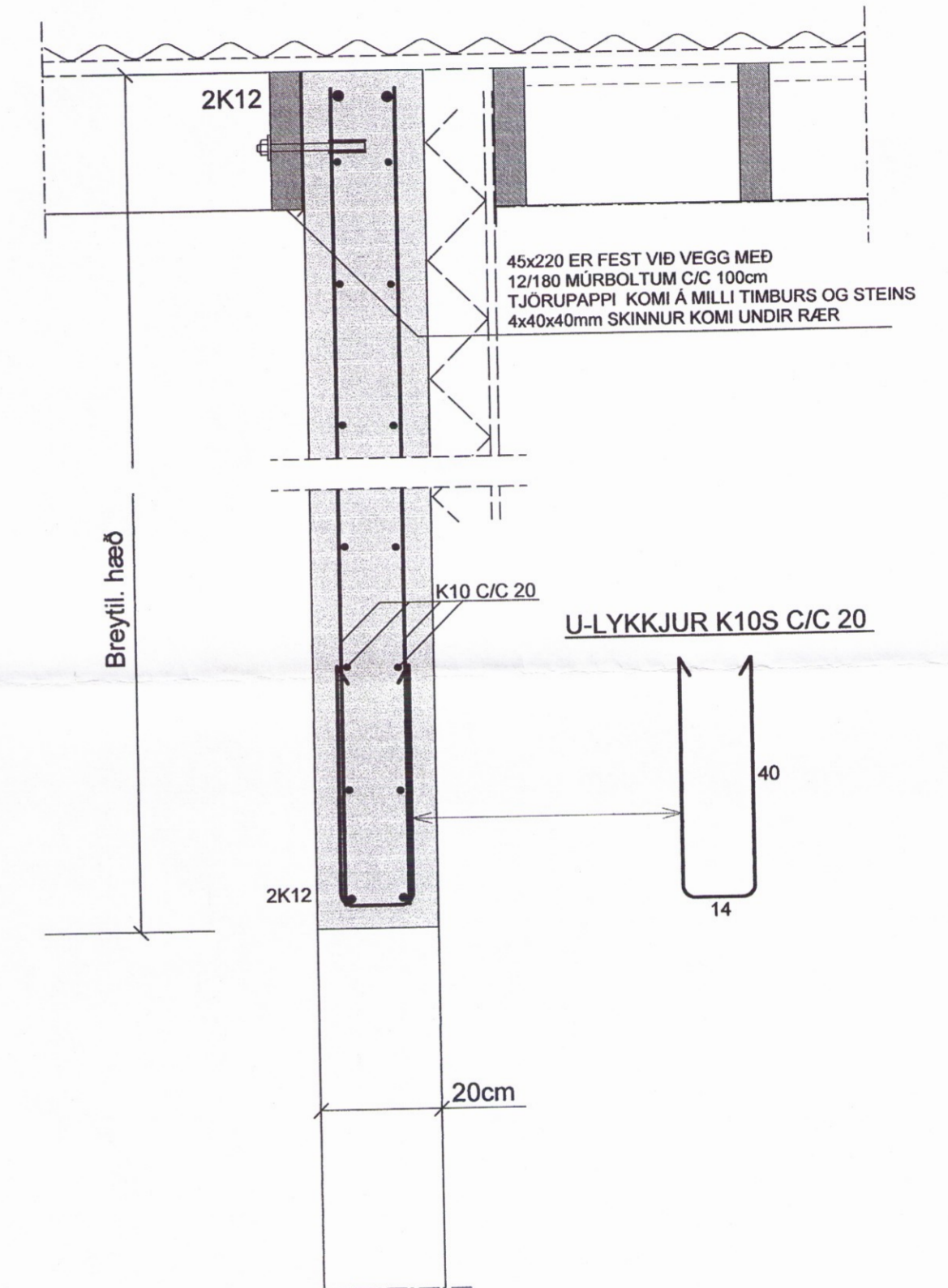
VEGGUR: V02, MKV.1:50



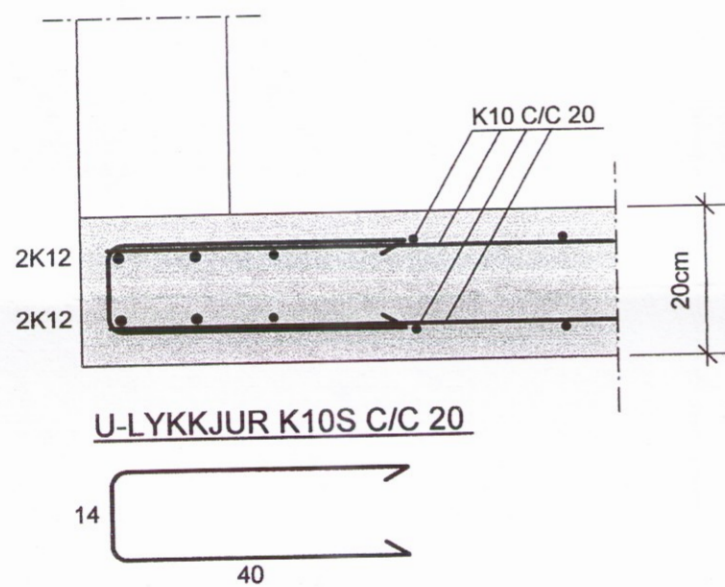
SNID V02-1 MKV. 1:10



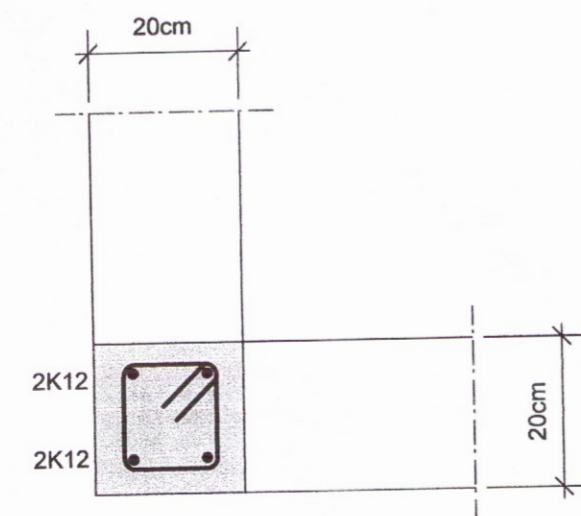
SNID V02-2 MKV. 1:10



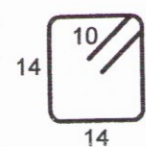
SNID V02-3 MKV. 1:10



SNID V02-4 MKV. 1:10



LYKKJUR K10S C/C 20



SJÁ SKÝRINGAR Á TEIKNINGU NR. B 104

TEIKN.NR. B 109	TV Tæknivangur ehf. KT.450586-1889 Kirkjustétt 26, 113 Reykjavík Sími: 564 22 44, Netf. tv@vortex.is
KVARDI: 1:50, 1:10	
DAGS: MARS 2016	
HANNAD: MG	VERKEFNI: SUÐURBAKKI 8 - GRÍMSNES og GRAFNINGSHREPPI
TEIKNAD: MG	BURÐARVIRKI: STEYPTIR VEGGIR- VEGGUR V02
YFIRFARIÐ: <i>Magnús Gylfason</i> Magnús Gylfason KT.201251-4199	Undirskrift Aðalheiður Guðlaugsdóttir <i>Aðalheiður Guðlaugsdóttir</i> Arktitekt FAI Kt. 080657-7819

0329