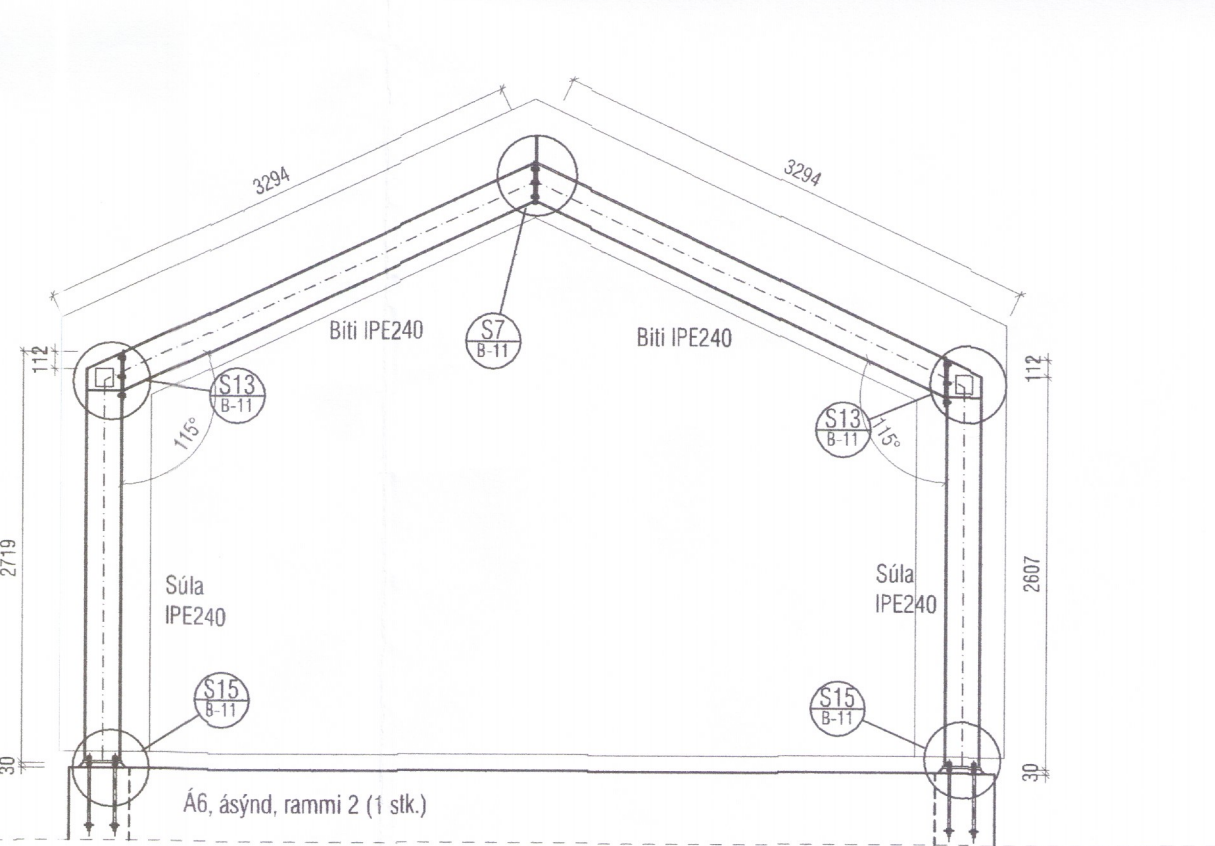
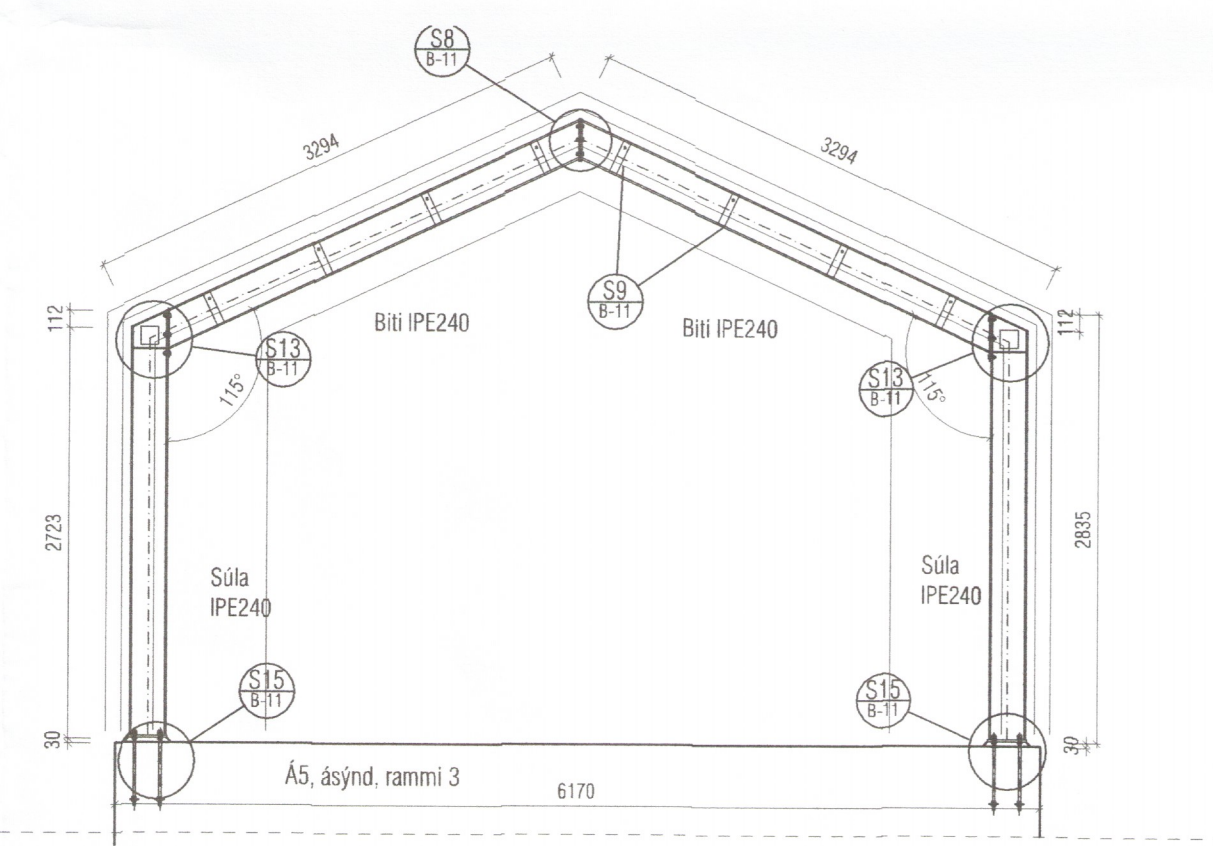
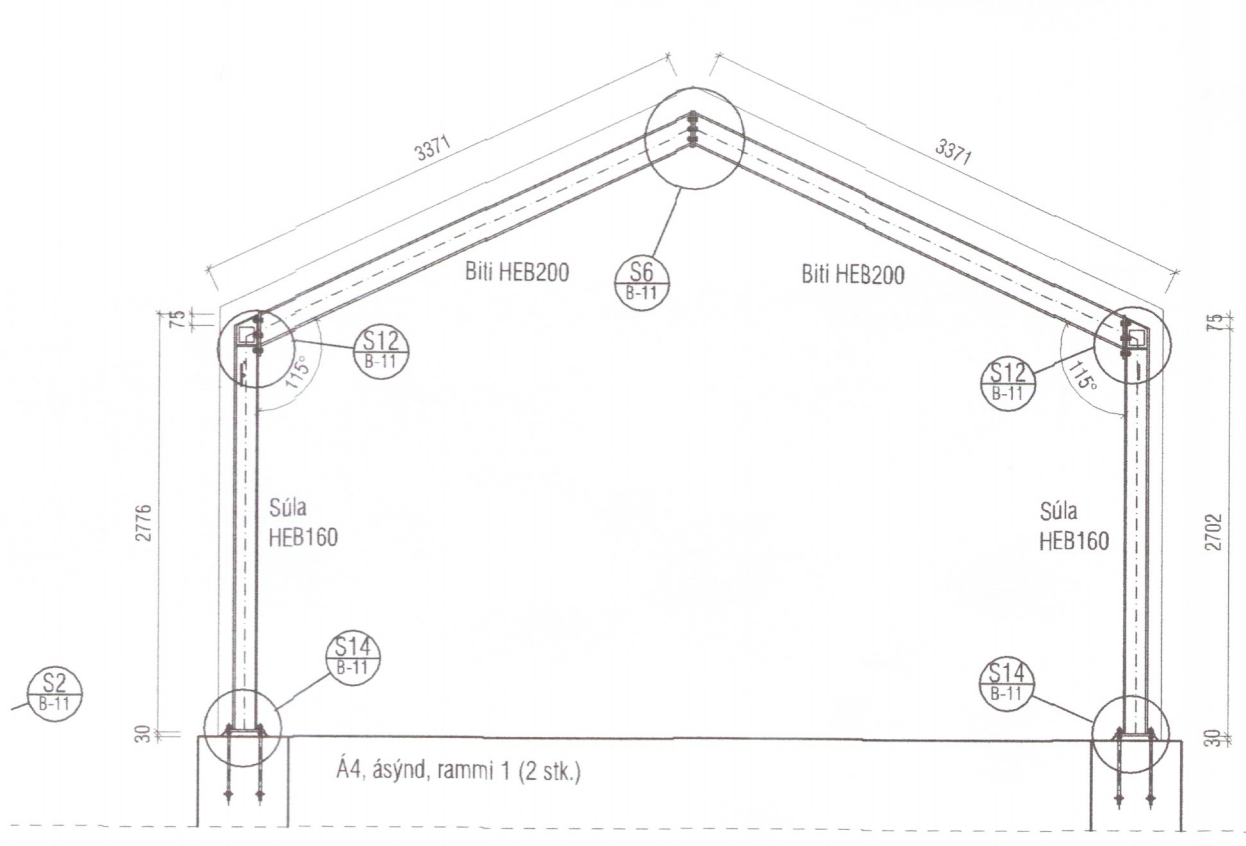
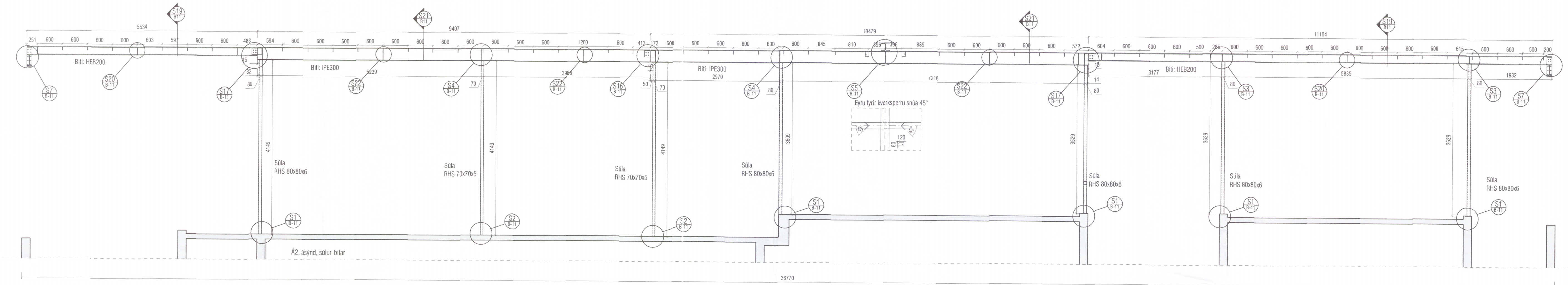
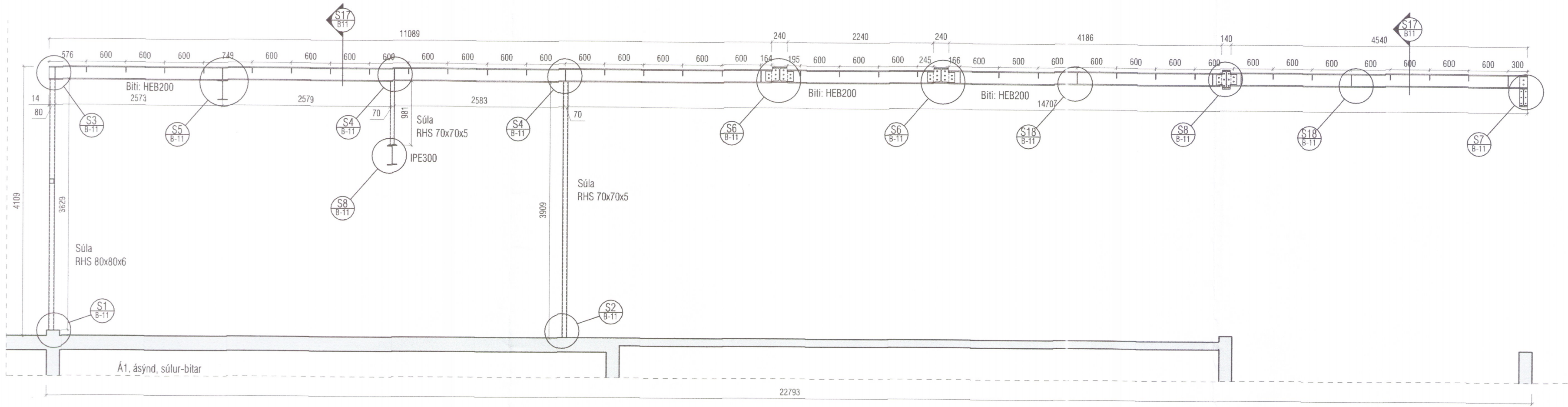
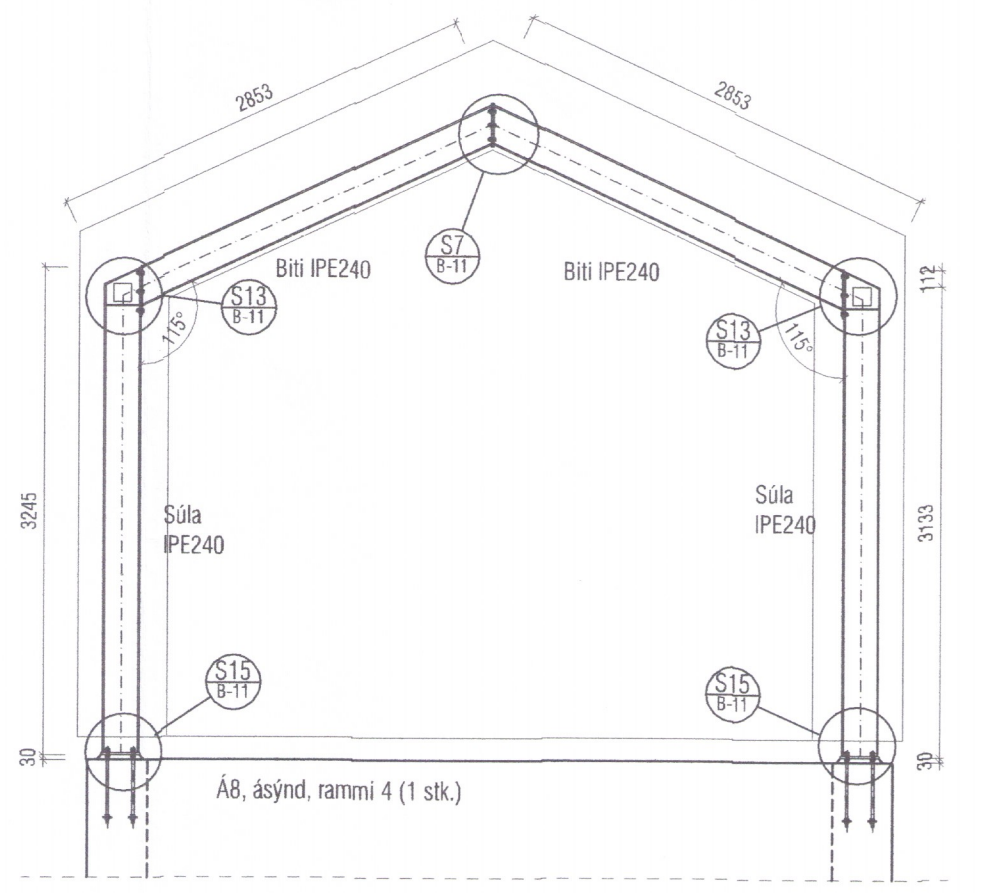
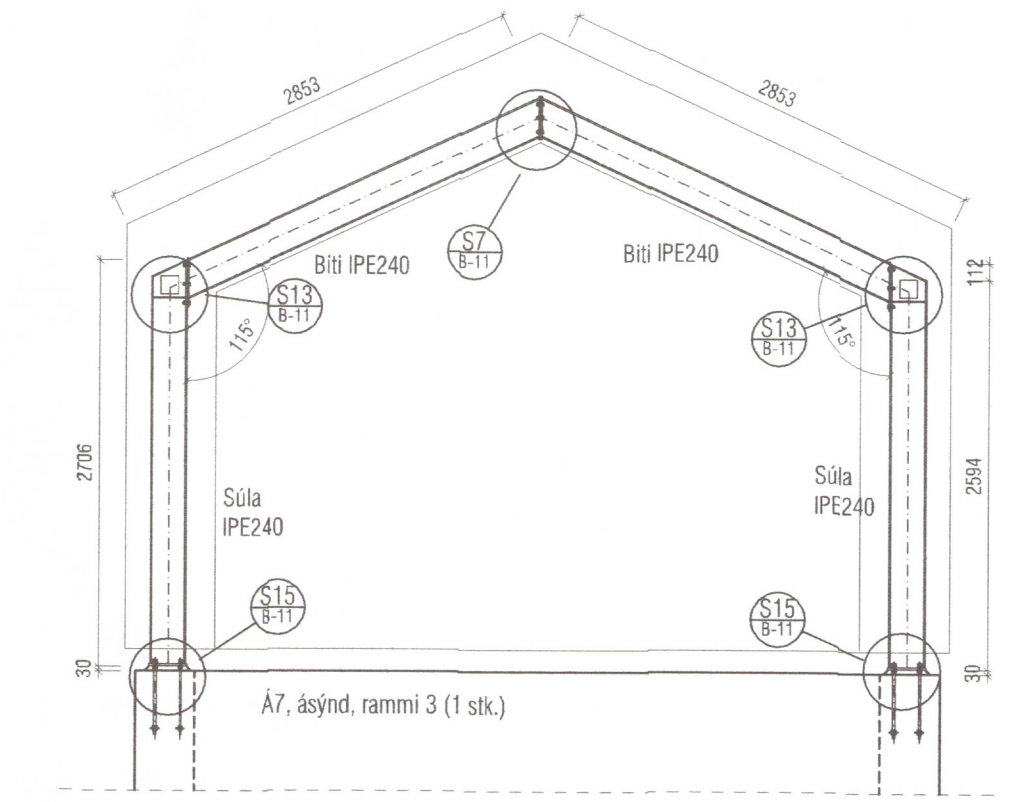
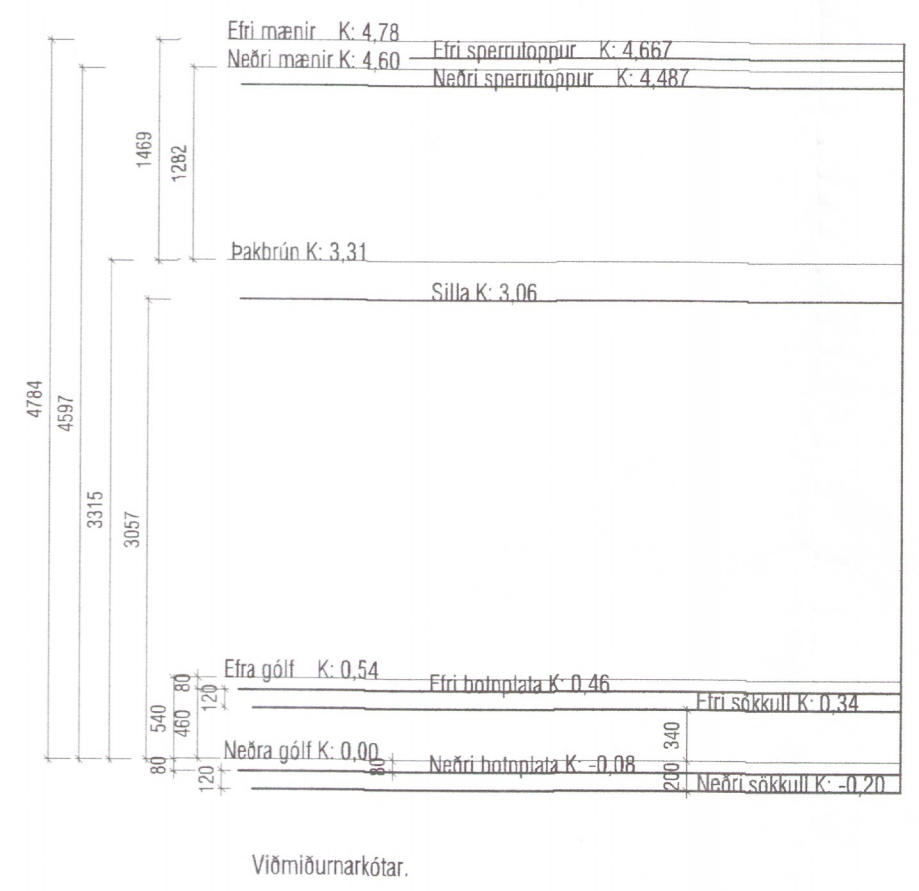


Umhverfis- og tæknivísindisráðgjafi
 Yfirfarið
 1. ápríl 2019
 Sigrún S. S. Sigrúnsson
 Byggingarfulltrúi



- Lýsing:
- Stálgaði: S355
 - Boltar 10.9
 - Tvær rær á hvern bolta í botnum tengingum.
 - Allt stál skal grunna með ryðvarnarmálningu

- Sútur:
- Sjúða skal alla lengd samliggjandi flata nema annað sé tekið fram.
 - Ömerktar sútur:
 Tvöföld kverksuða $a=0,71\text{min}$
 Einföld kverksuða $a=0,7\text{min}$
 Kverksuða, kross $a=0,5\text{min}$ (cruciform)
 Holpróllar (RHS, CHS, R) kverksuða $a=\text{tmin}$
 Stúlsuða, heilyllt $s=\text{tmin}$ (ful penetrated but weld)



VEKTOR
 - hönnun og ráðgjöf -
 Síðumúla 3, 108 Rvk, s: 554-6650 / 897-5363

Sigrún S. Sigrúnsson
 byggingateknifræðingur
 Kt. 000859-7749
 email: sigurun@vektor.is

SNÆFOKSSTAÐIR 1, SUMARHÚS
 GRÍMSNES OG GRAFNINGSHREPPI
 STÁLVIKRI, BITAR OG RAMMAR

Hamnað SH/ÓA Tölvað ÓA
 Dagssetning Verk nr. Málfræði Tækn. nr.
 08.03.2019 1:50 B-10

17564