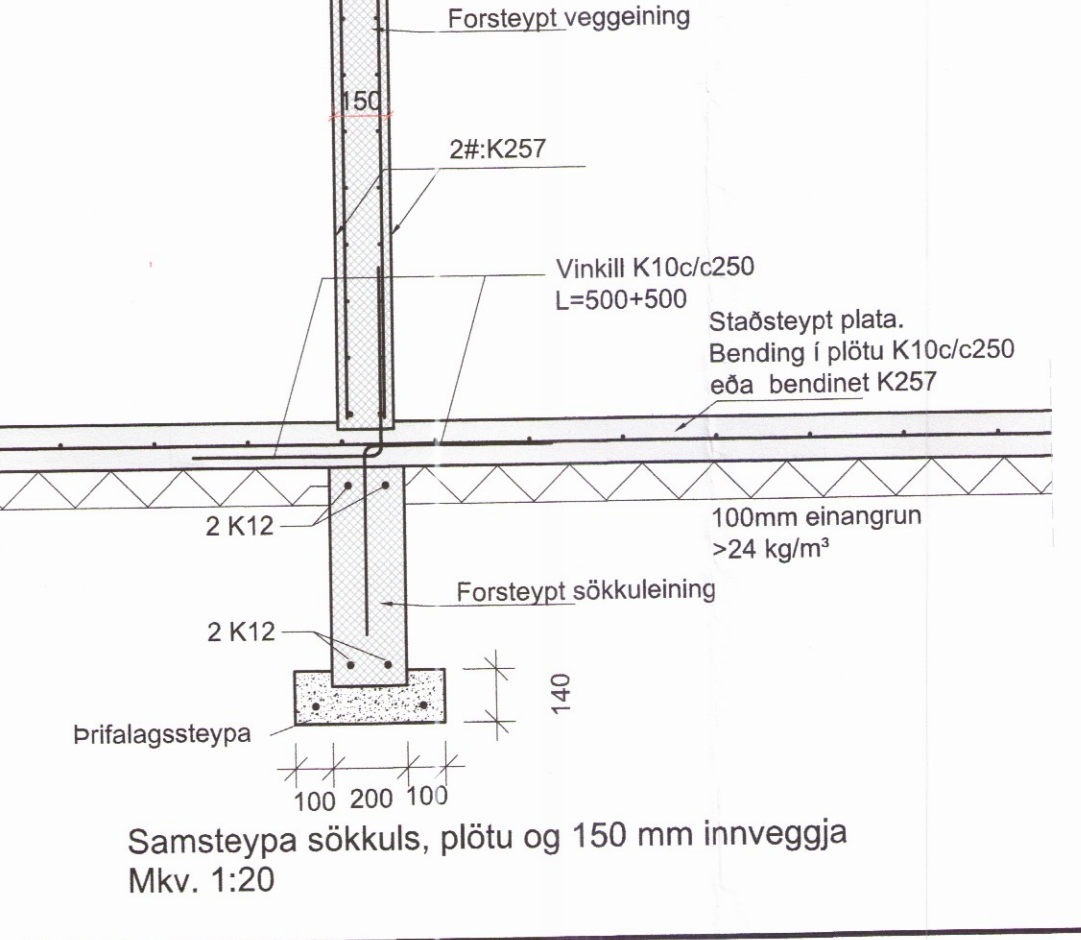
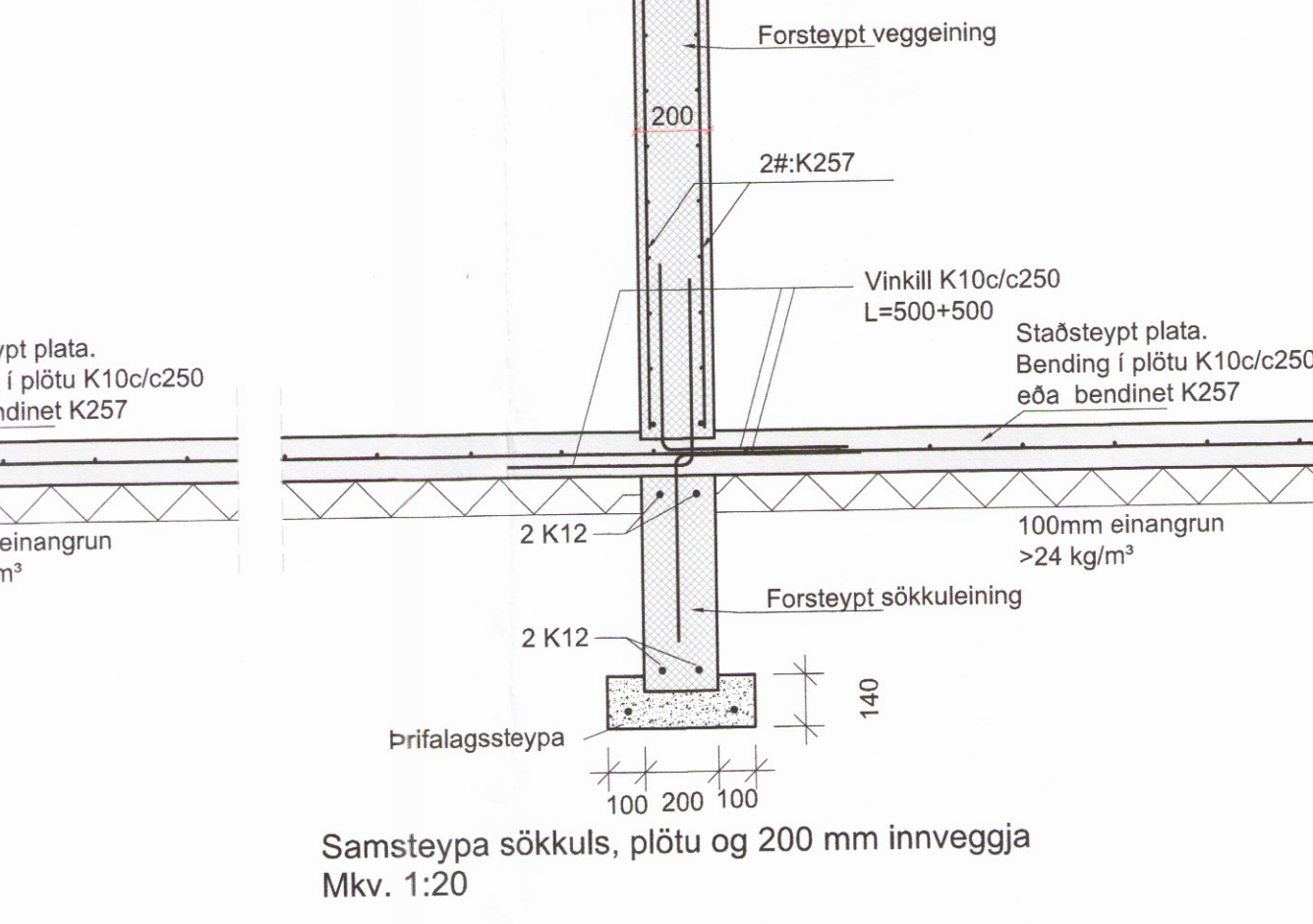
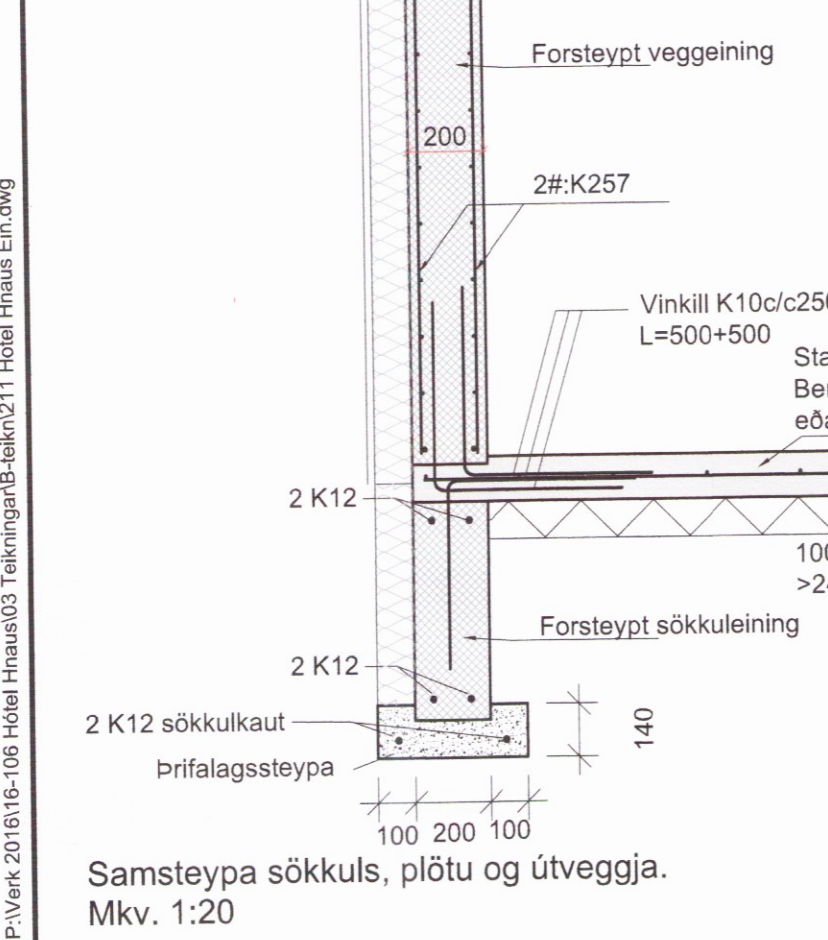
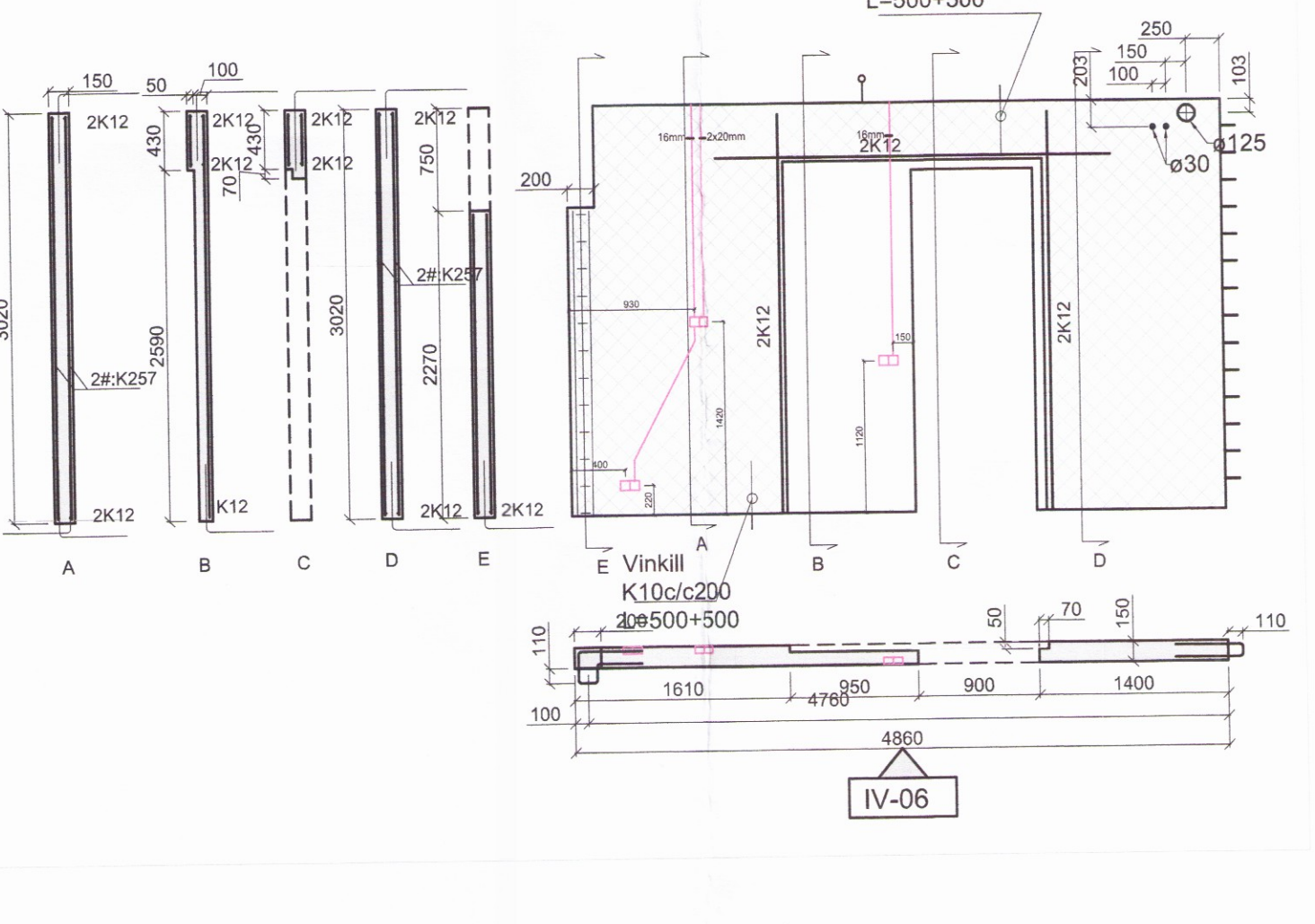
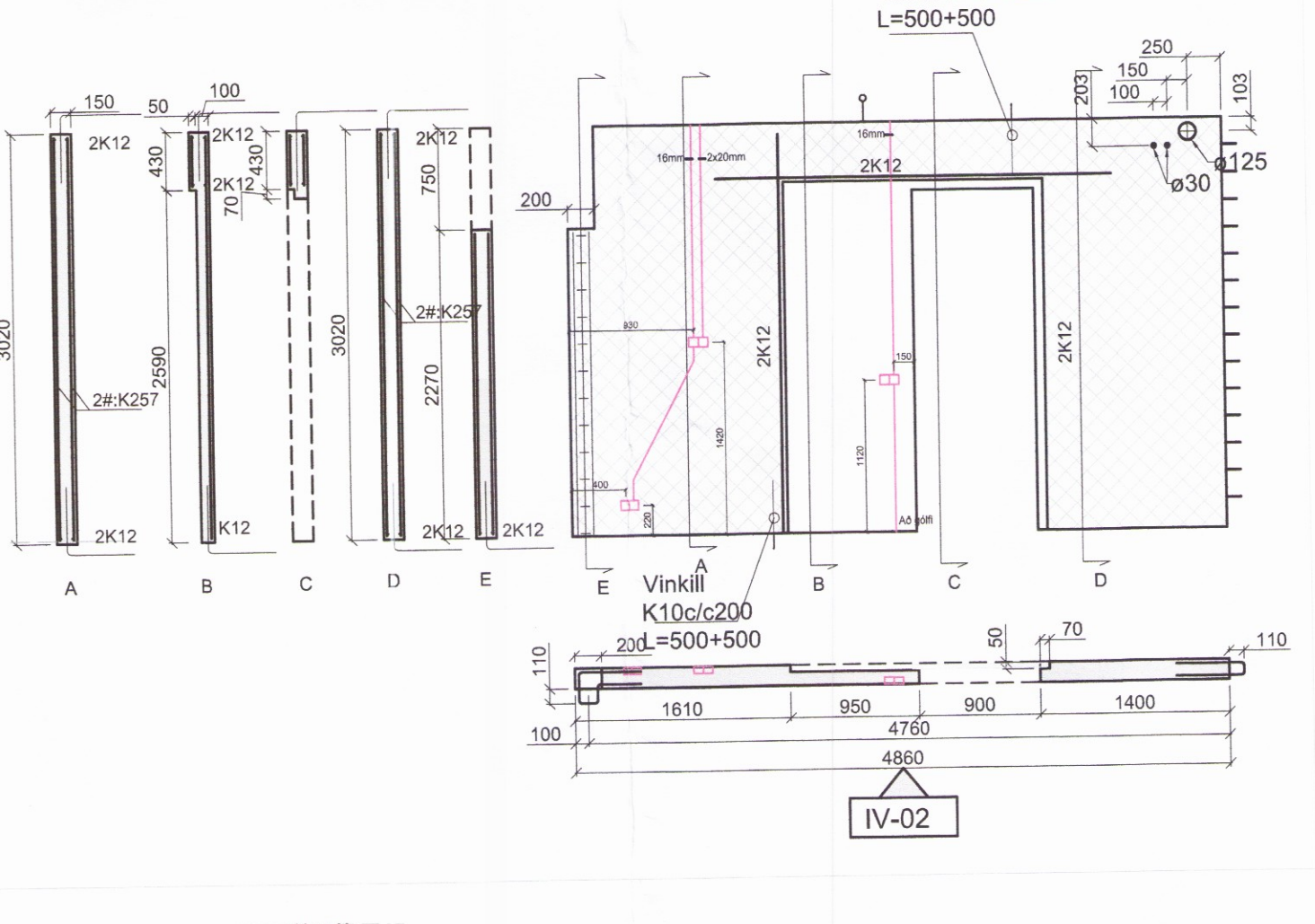
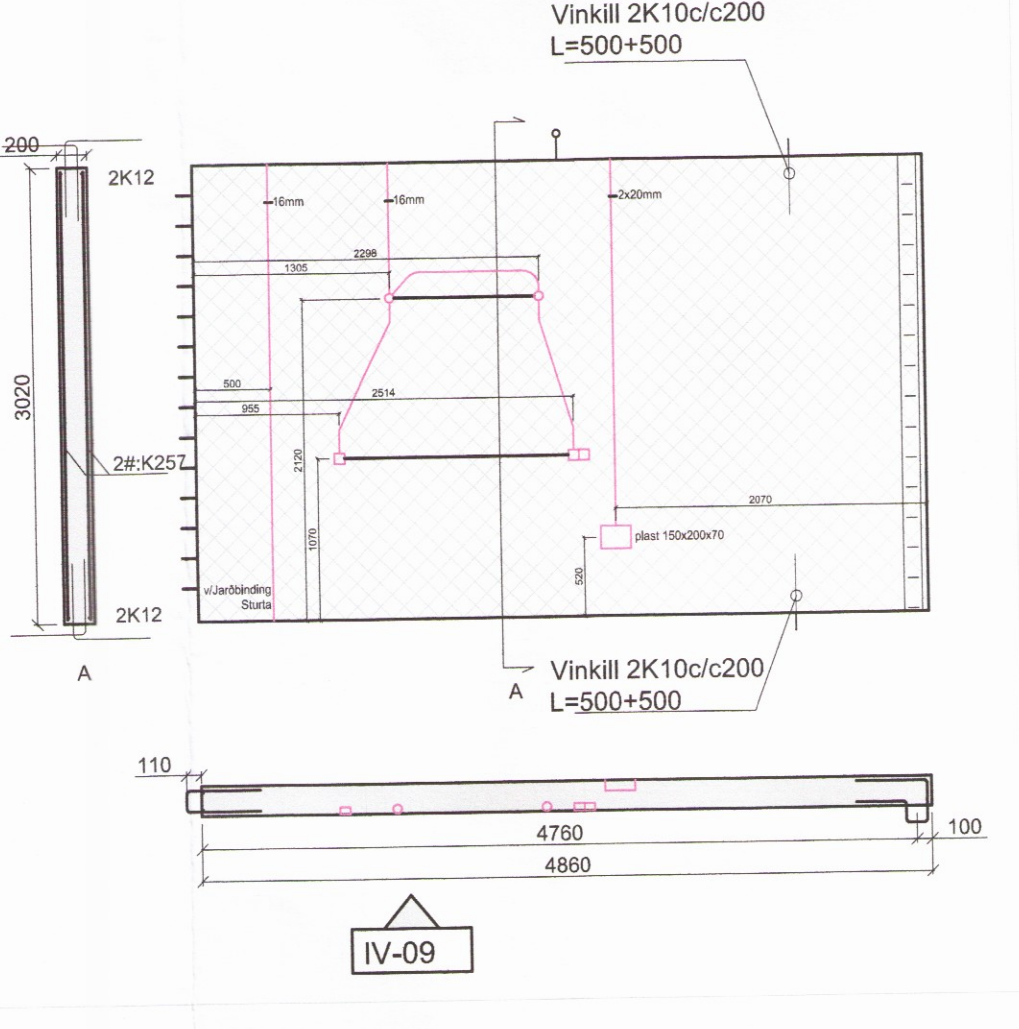
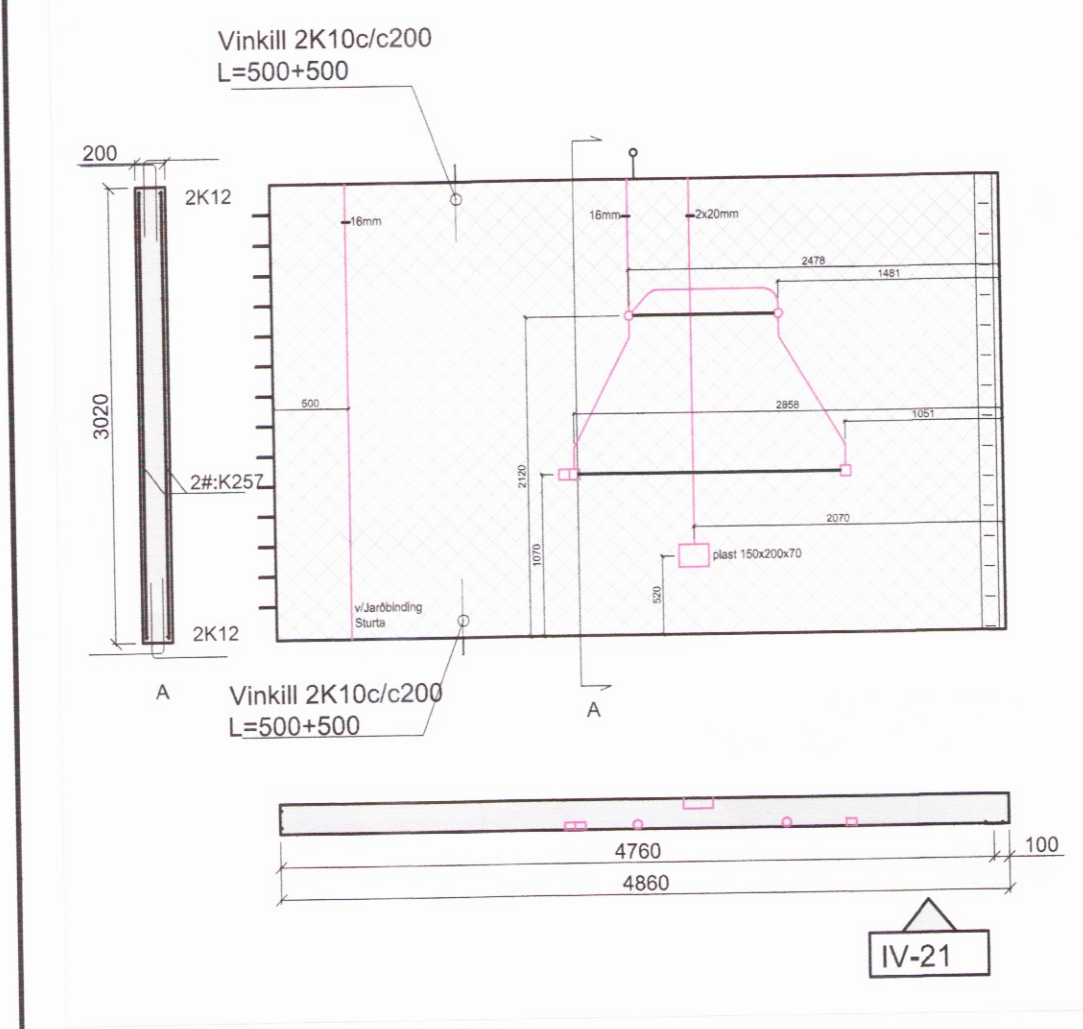
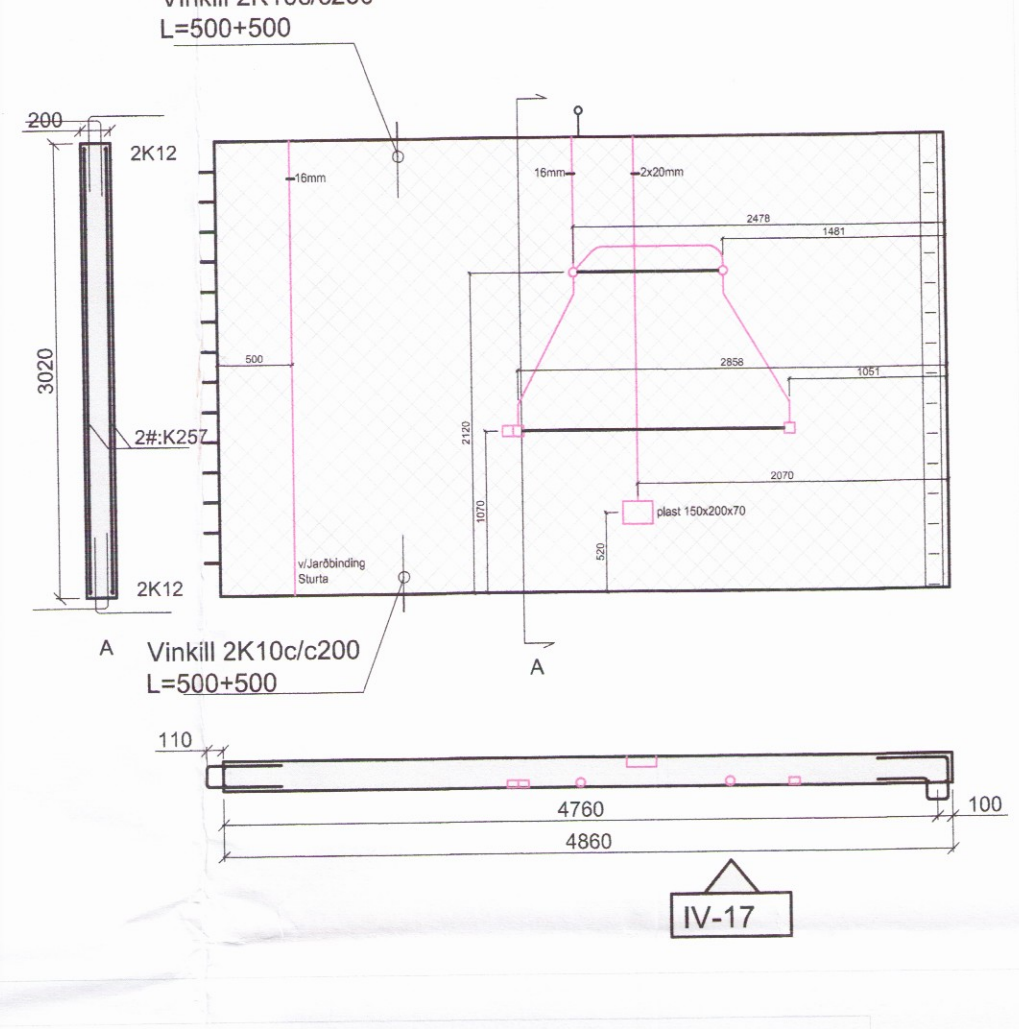
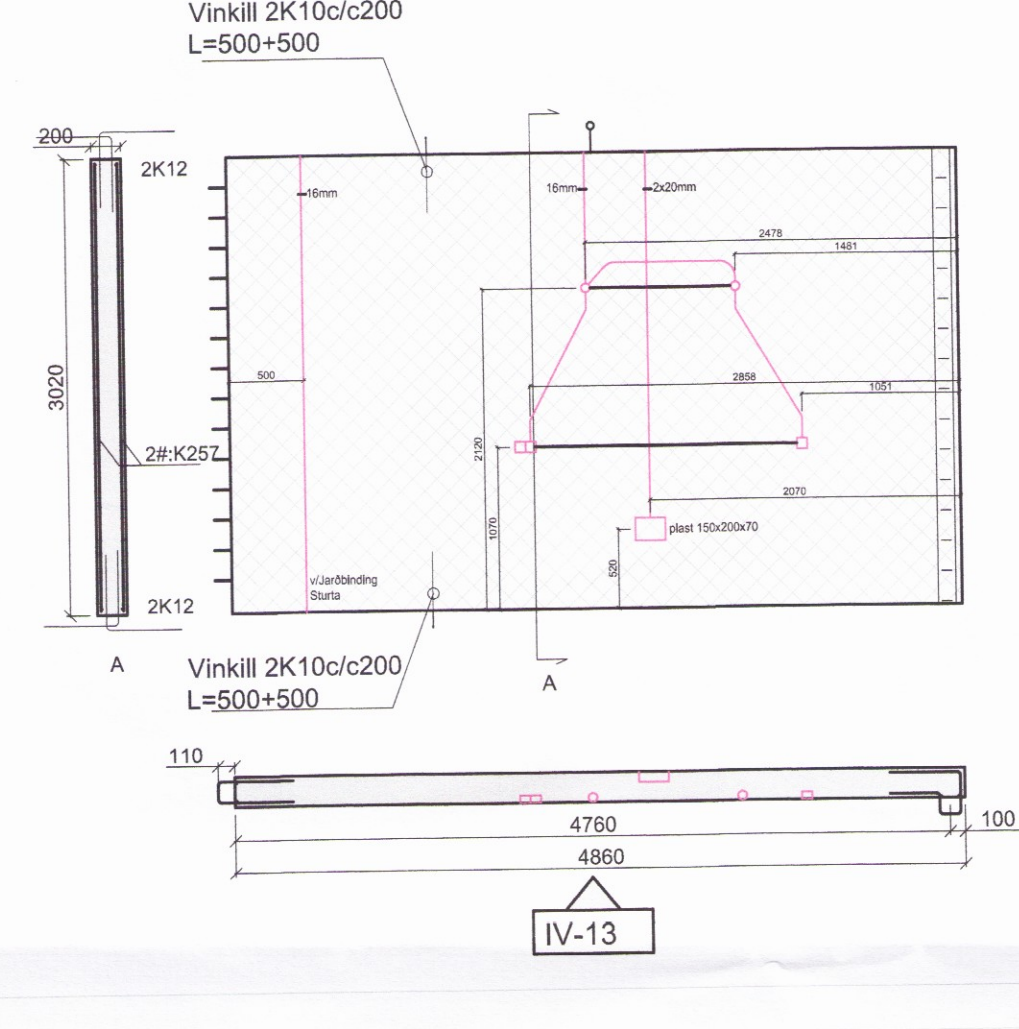
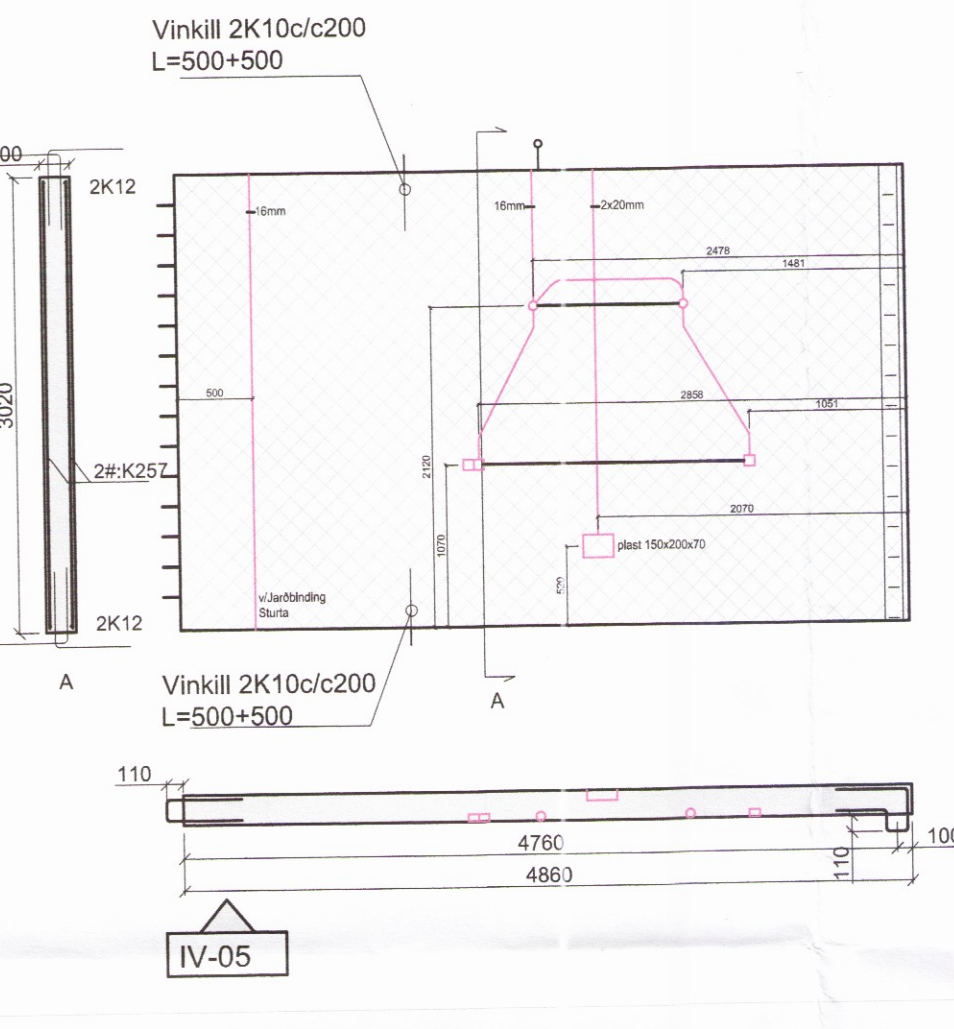
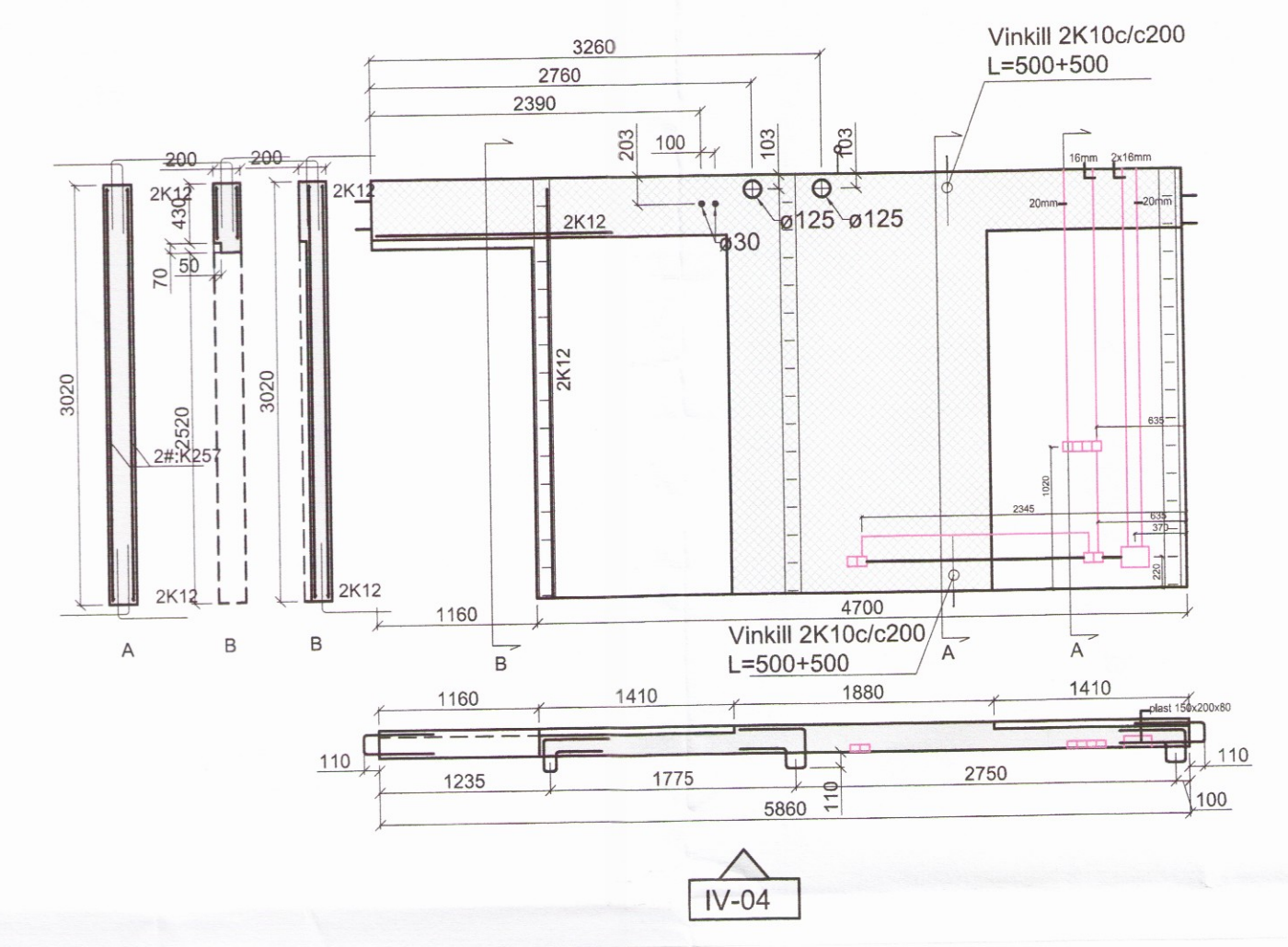
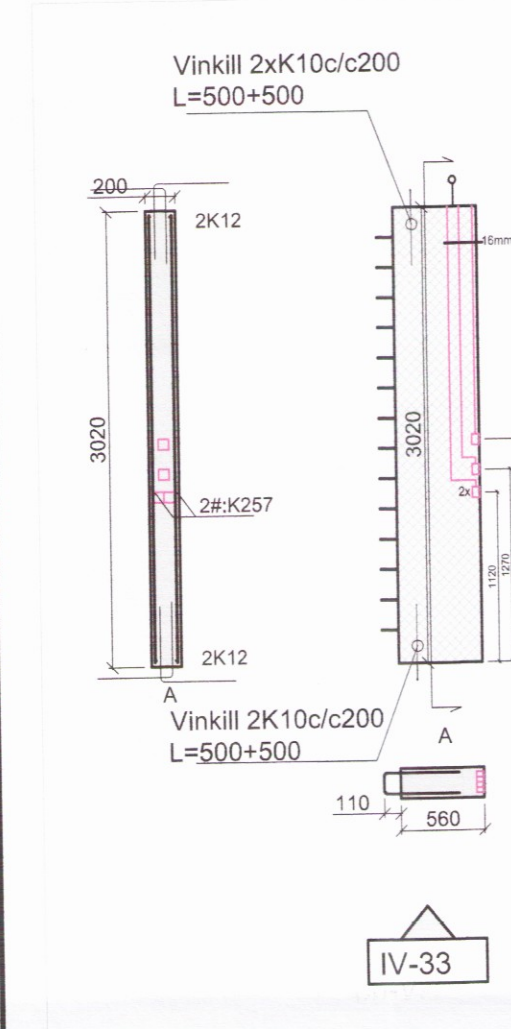
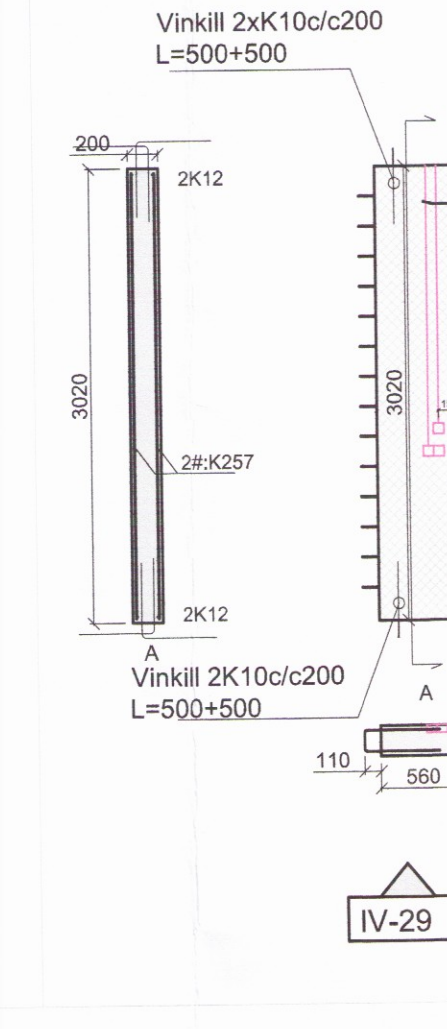
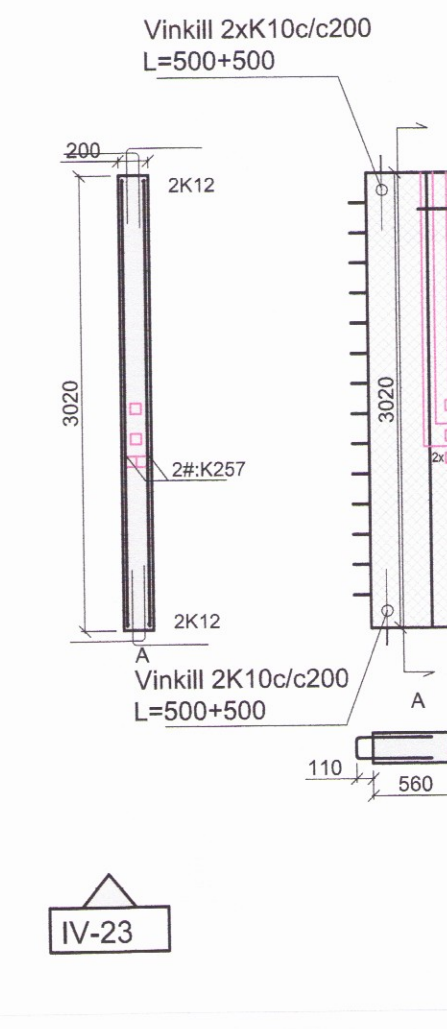
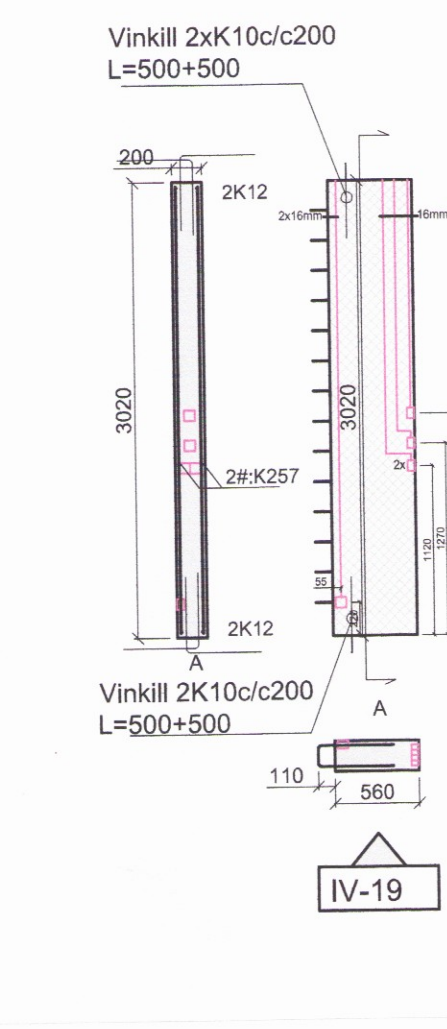
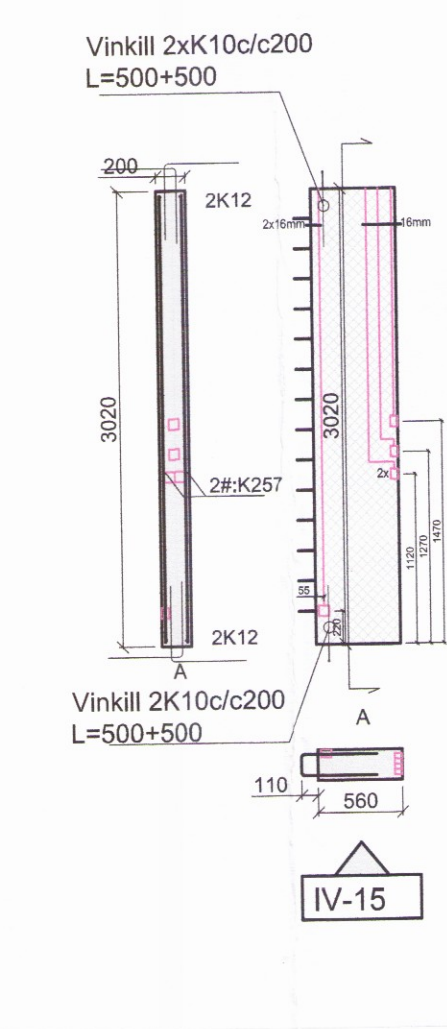
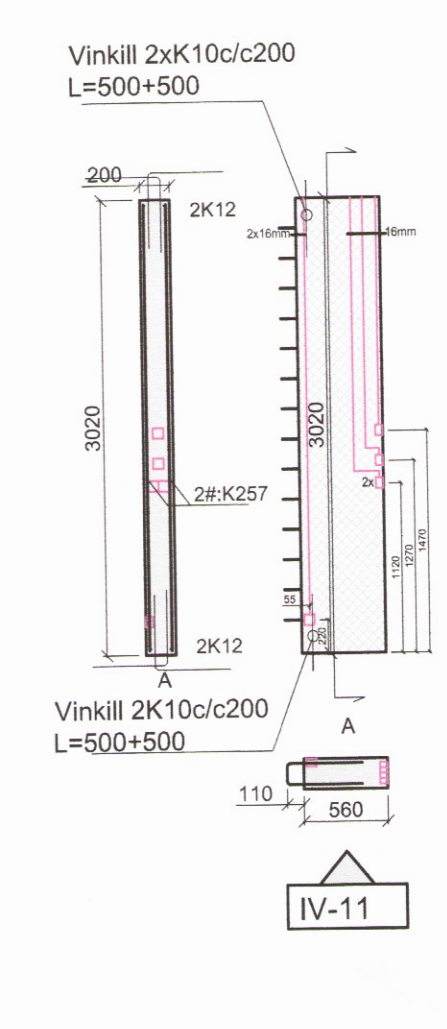
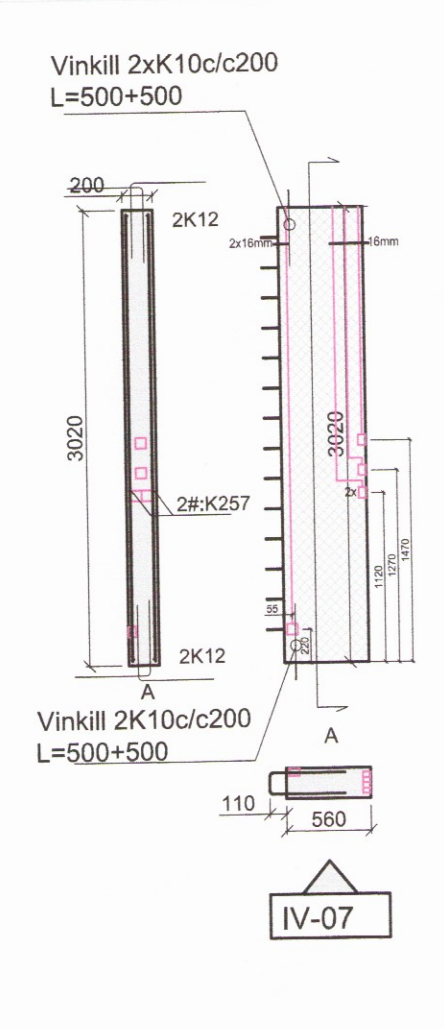
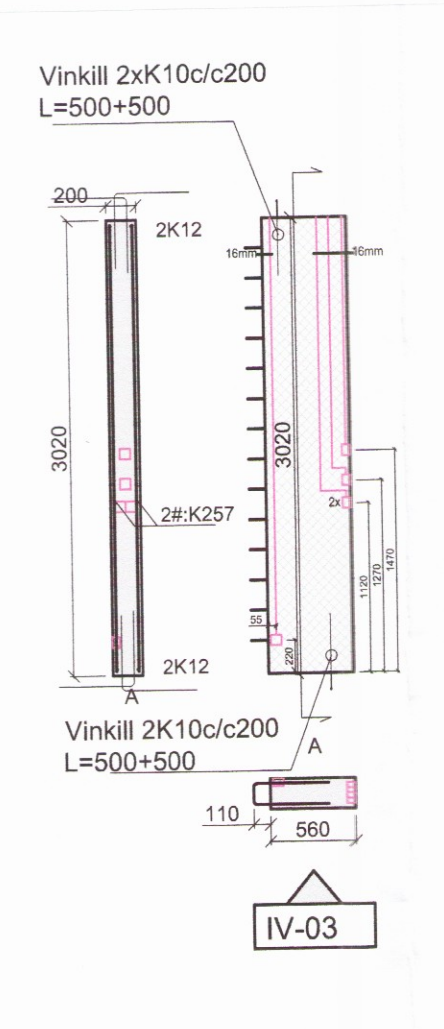
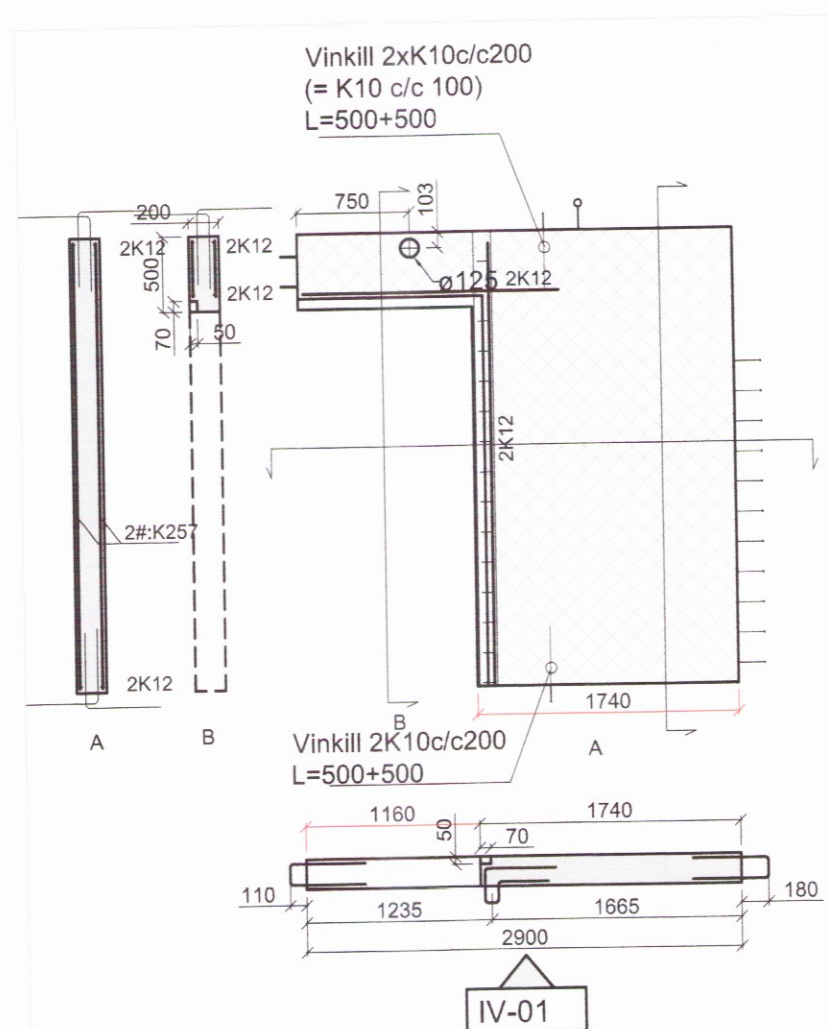


Dags:	Nr.	Breytingar:	Samb.

Upp og niður úr 150mm einingum skulu koma K10 vinklar 500+500mm, c/c 200 mm nema annað komi fram.
 Upp og niður úr 200mm einingum skulu koma 2 stk. K10 vinklar 500+500mm, c/c 200 mm nema annað komi fram.
 Í einingar kemur tvöfalt bendinet K257.
 Í úbrúnn eininga kemur 2 stk. K12.
 Við hurða og gluggaop kemur 2 stk. K12 sem ná 500mm út fyrir op.
 Í samsteypu eininga kemur 2 stk. K16.



MÓTTÉKID:
 ÚTI INNI
 ARKITEKTAR
 BALDUR Ó. SVAVARSSON
 ARKITEKT FAJ SAMARK
 120357 5149

Skýring sjá teikn. nr. 200

VERKHOF EHF
 Follernúll 26 • 108 Reykjavík • Sími: 517 9050 • Netfang: verkhof@verkhof.is

Hótel Hnaus Flóa	Hönnuðir: Svarar M. Sigurjónsson Björgvin Ó. Sigurjónsson	Dagur: 26.06.2017
Burðarvirki Veggjeingar Ásýnd og snið	Sambýkkir: Svarar M. Sigurjónsson Björgvin Ó. Sigurjónsson	Geymslunúmer: 211
1:20	1:50	Verknúmer: 16-106
1:50	1:50	Malkv: 1:50/20
		Teknúmer: 215

