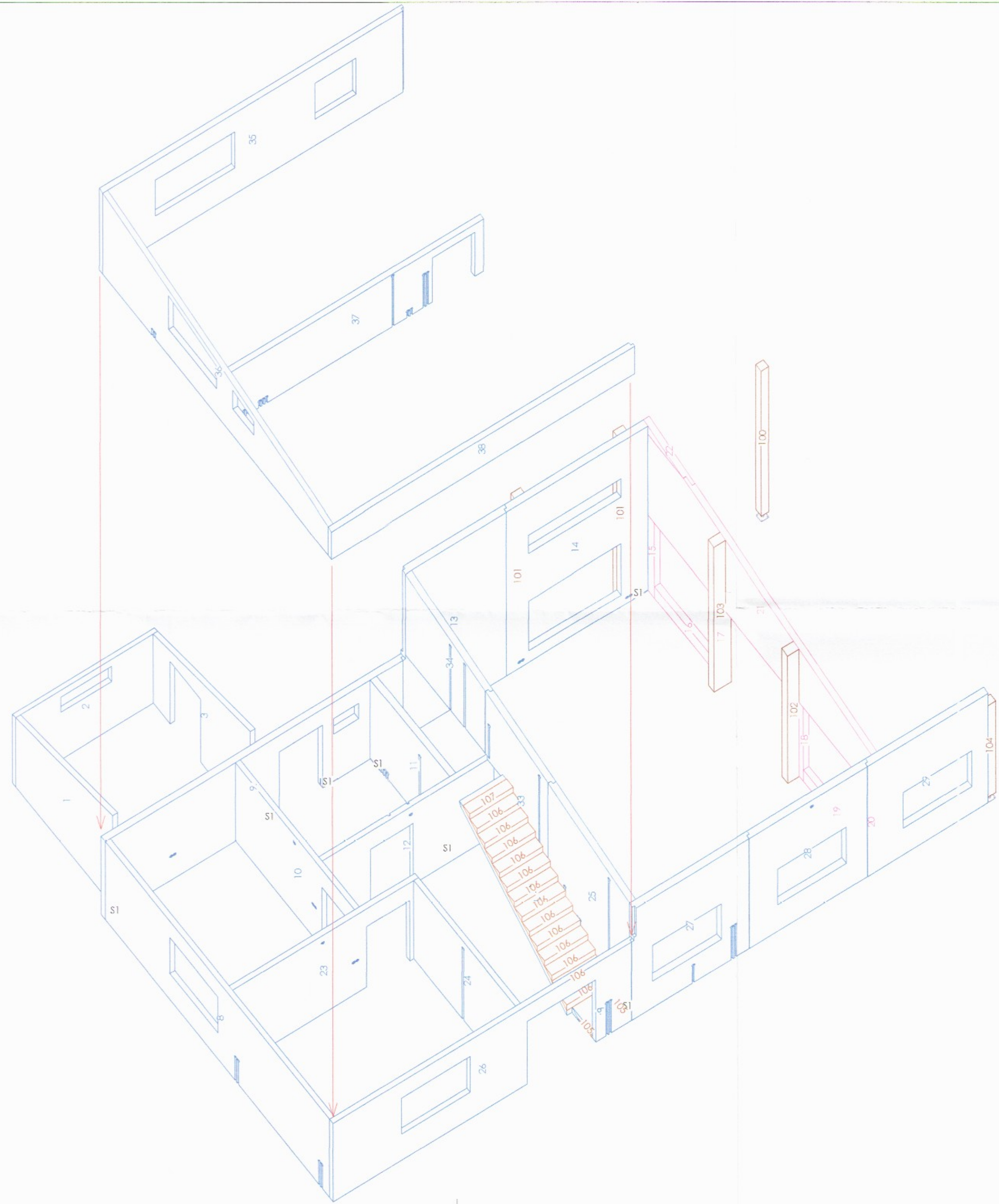


Umhverfis- og tæknisvið Uppsveita
Yfirfarið
 06. ágú. 2019
fh. hlynur
 Byggingarfulltrúi



General information:

Structural system made of cross laminated timber from KLH Massivholz GmbH.
 KLH elements are made according to ETA-06/0138 Timber is spruce,
 strength class C24 according to EN 338
 Gluelam is class GL28c.

Steel parts: see drawings 501
 Details of joints: see drawings D01 - D22

A	perspective view walls	20.03.2019	KLH		
ÚTGAFA	SKÝRING	DAGS.	LIANN.	YFIRF.	SAMP.
DAGS. UNDRISKRITAR	BURDARI-OLSIÖNNIÐUR - SIGURDUR UNNAR SIGURSSON KT. 290772-4279				
25.06.19	<i>Sig U. Sig</i>				
DAGS. UNDRISKRITAR	NAFN OG EHNITIAL SAMRÁMINGARÖNNIÐJAF				
25.06.19	<i>Sig U. Sig</i>				
HÖNNIÐUR	KLH Massivholz GmbH Gewerbestraße 4 A-8842 Teufenbach-Katsch Tel. +43 (0) 3588/8835 - 0 Fax +43 (0) 3588/8835 - 20 E Mail: office@klh.at				
HEITI VOKS	FLATIR LÓÐ 9 - L208461 SKEIÐA- OG GNÚPVERJAHREPPI FRÍSTUNDAHÚS				
HEITI TEIENINGAR					
	perspective view walls				
VAKENUMBR	DAGS.	21.05.2019	NR. TEIENINGAR	117 A	
					BLAÐSTEFIR: DIN A2

2492-19