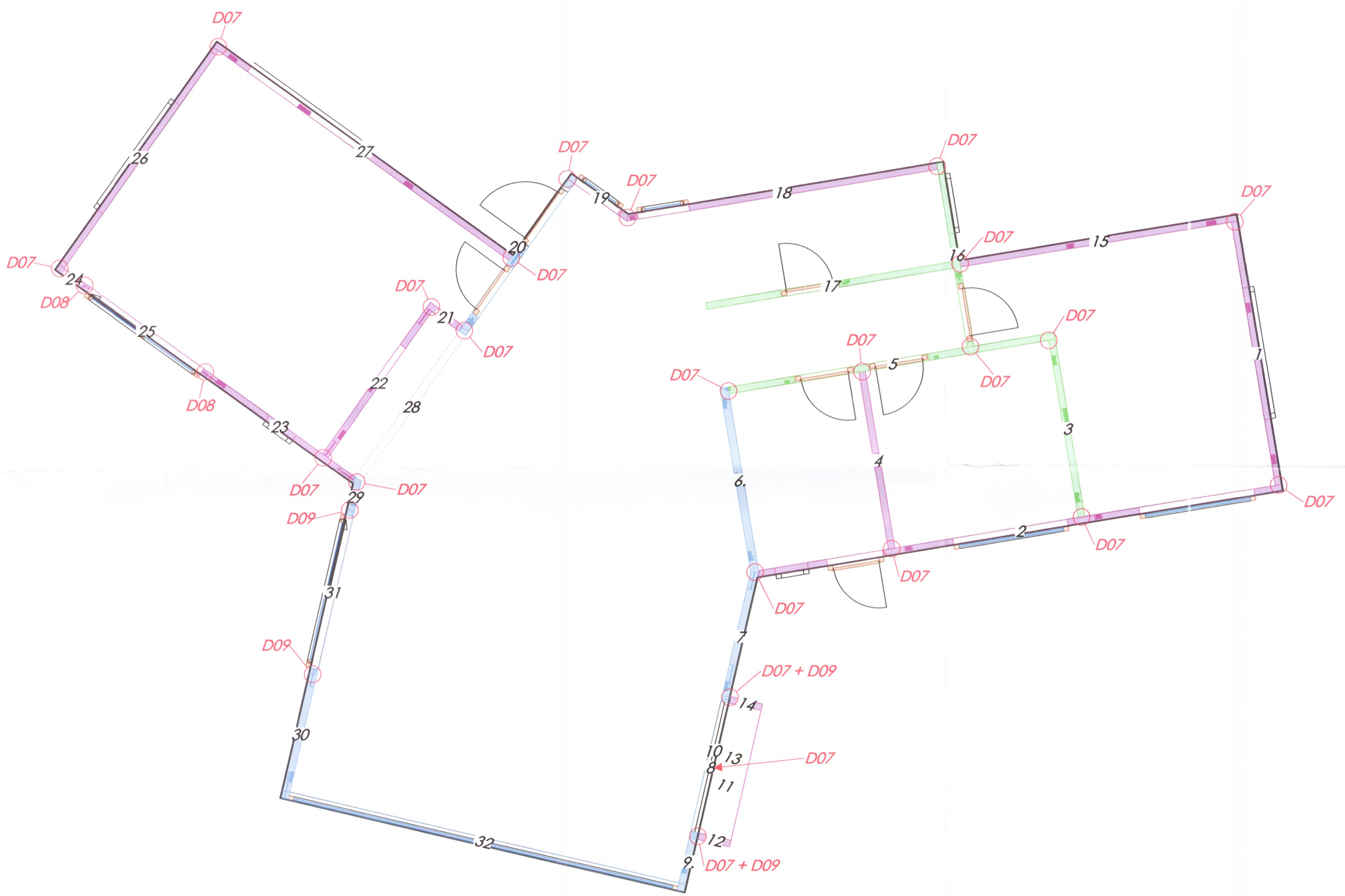
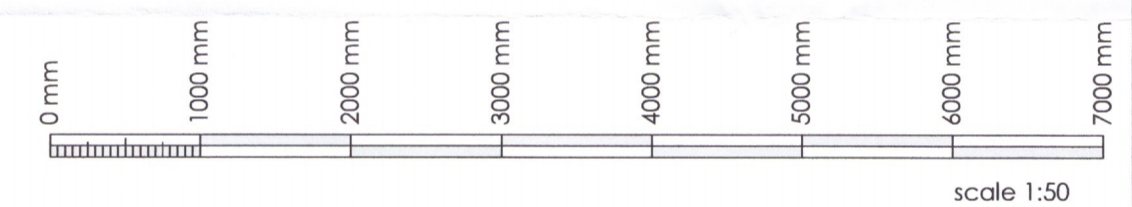


Umhverfis- og tæknisvið
Uppsveita
14. nóv. 2019
MÓTTÆKIÐ
S. Þ. Þ.



General information:
Structural system made of cross laminated timber from KLH Massivholz GmbH.
KLH elements are made according to ETA-06/0138 Timber is spruce, strength class C24 according to EN 338

Details of joints: see drawings D01 - D14



A	connection walls / walls	11.10.2019	KLH		
ÚTGÁFA	SKÝRING	DGAS.	HANN.	YFIRF.	SAMB.

DAGS. UNDIRSKRIFAR NAFN OG KENNITALA HÖNNUJAR Ingvar Rafn Gunnarsson, kt: 050179-5919
5/11'19 *Ingvar Rafn Gunnarsson* *IRG*
 kt. 050179-5919

DAGS. UNDIRSKRIFAR NAFN OG KENNITALA HÖNNUJASÍÐJÓRA Hrólfur Karl Cela kt: 280679-4539
sluica *Hrólfur Karl Cela*

KLH **KLH Massivholz GmbH**
 Gewerbestraße 4
 A-8842 Teufenbach-Katsch
 Tel. +43 (0) 3588/8835 - 0
 Fax +43 (0) 3588/8835 - 20
 E-Mail: office@klh.at

**KJARRBRAUT 9
GRÍMSNESI**

connection walls / walls

EG 1
Schnitthöhe: 1:250
Maßstab: 1:50

BLASTÆRÐ: DIN A2