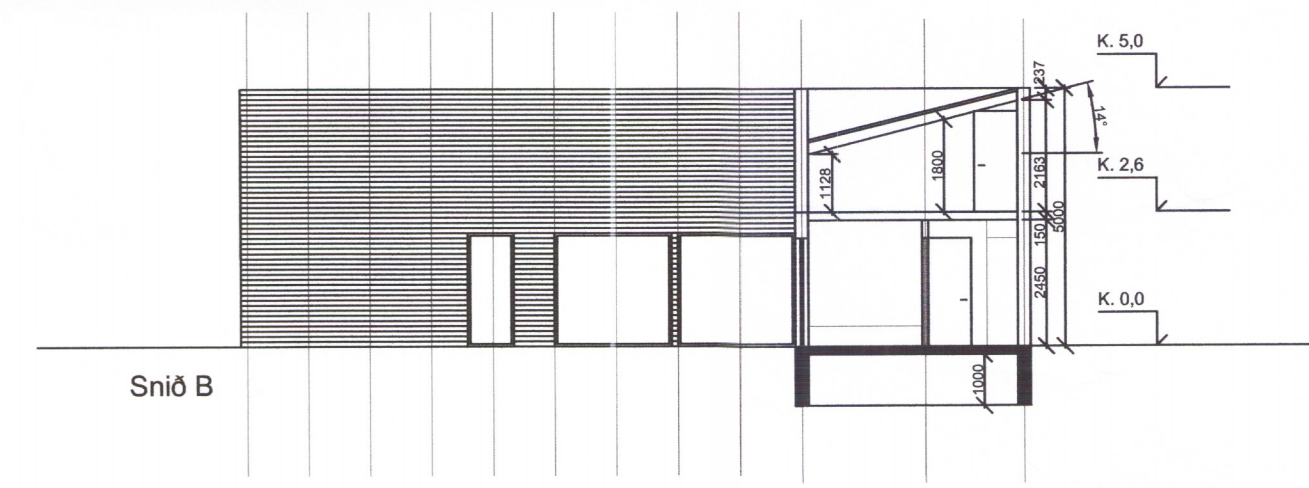
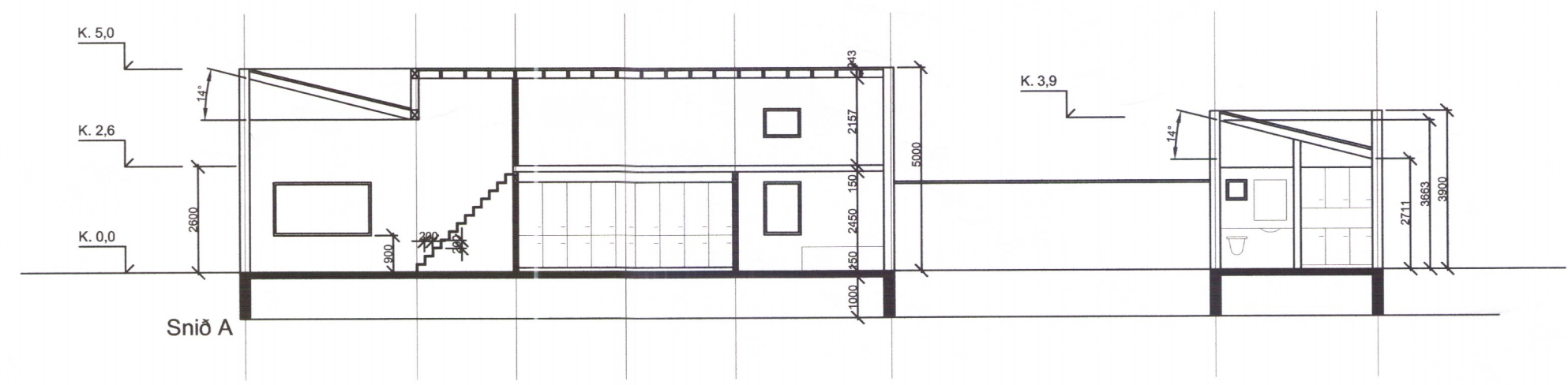
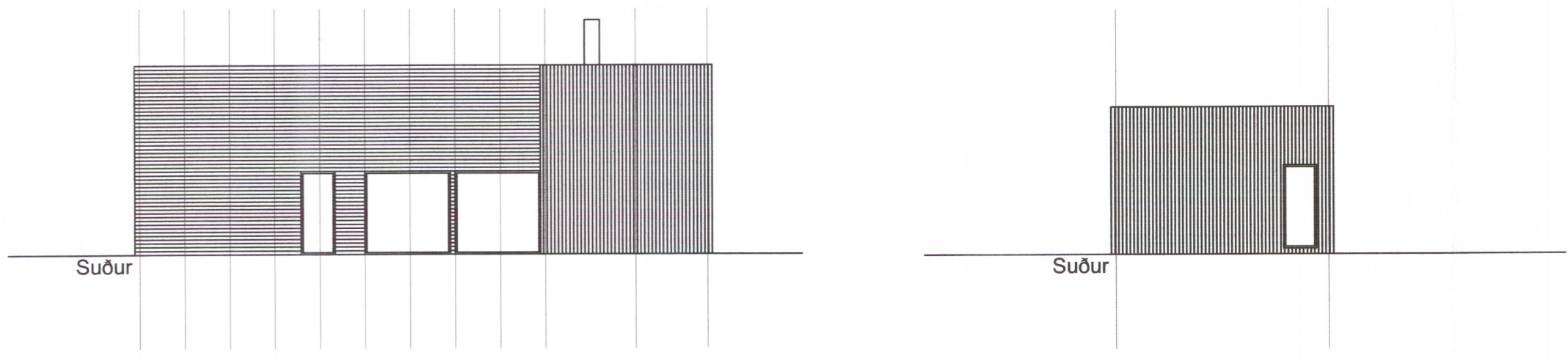
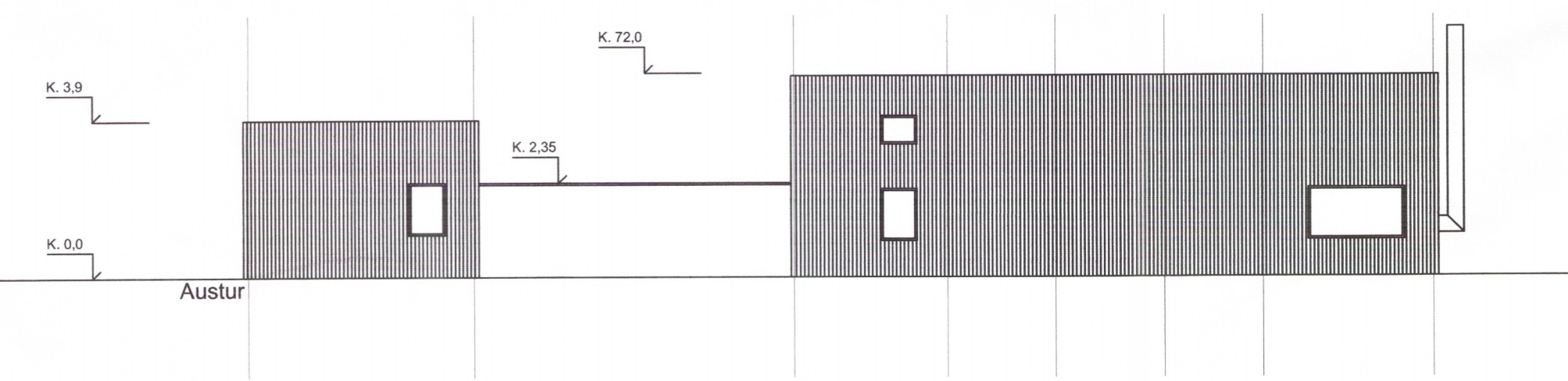
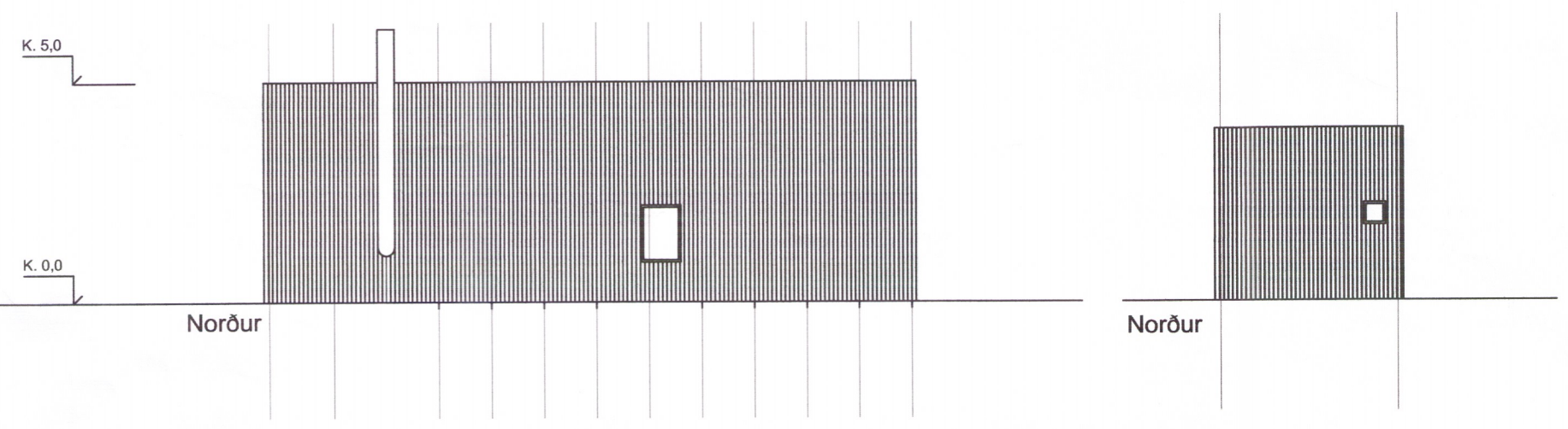
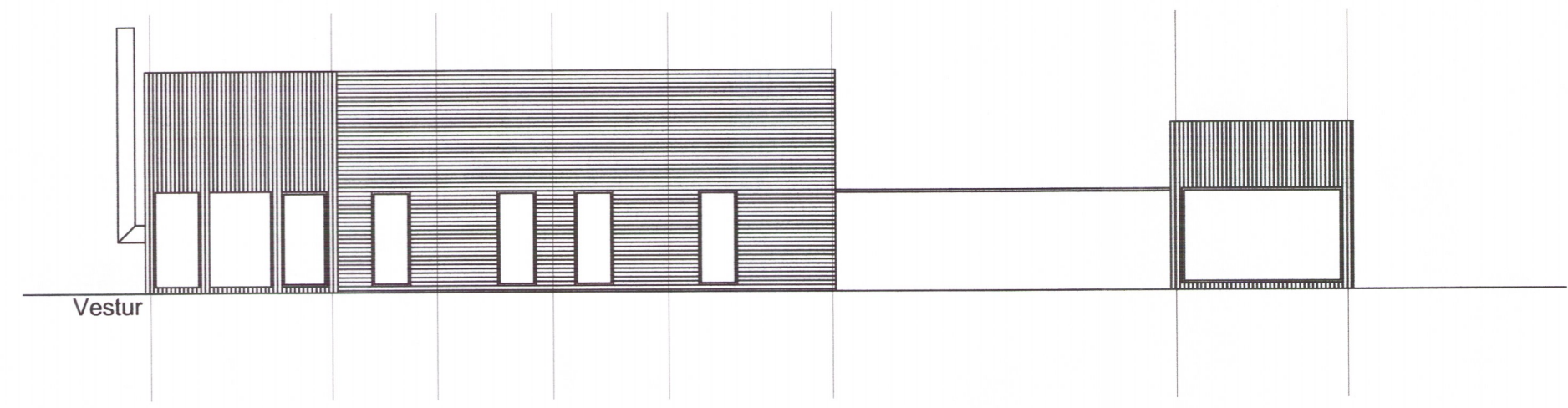


Samþykkt
 28 FEB, 2006
 Hinnar Einarsson
 Byggingarfulltrúi uppsveita Árnessýslu



Djúpahraun 6
 Miðengi í
 Gímsnes- og Grafingahreppi
 Snið A og B
 M 1:50
 Teikning nr. 006
 Dags. 07.11.2005
 Sigríður Sigurðardóttir, arkitekt
 Sléttahraun 18, 220 Hf
 Sími: 555 0857
 Kt. 260266-4709

3935