

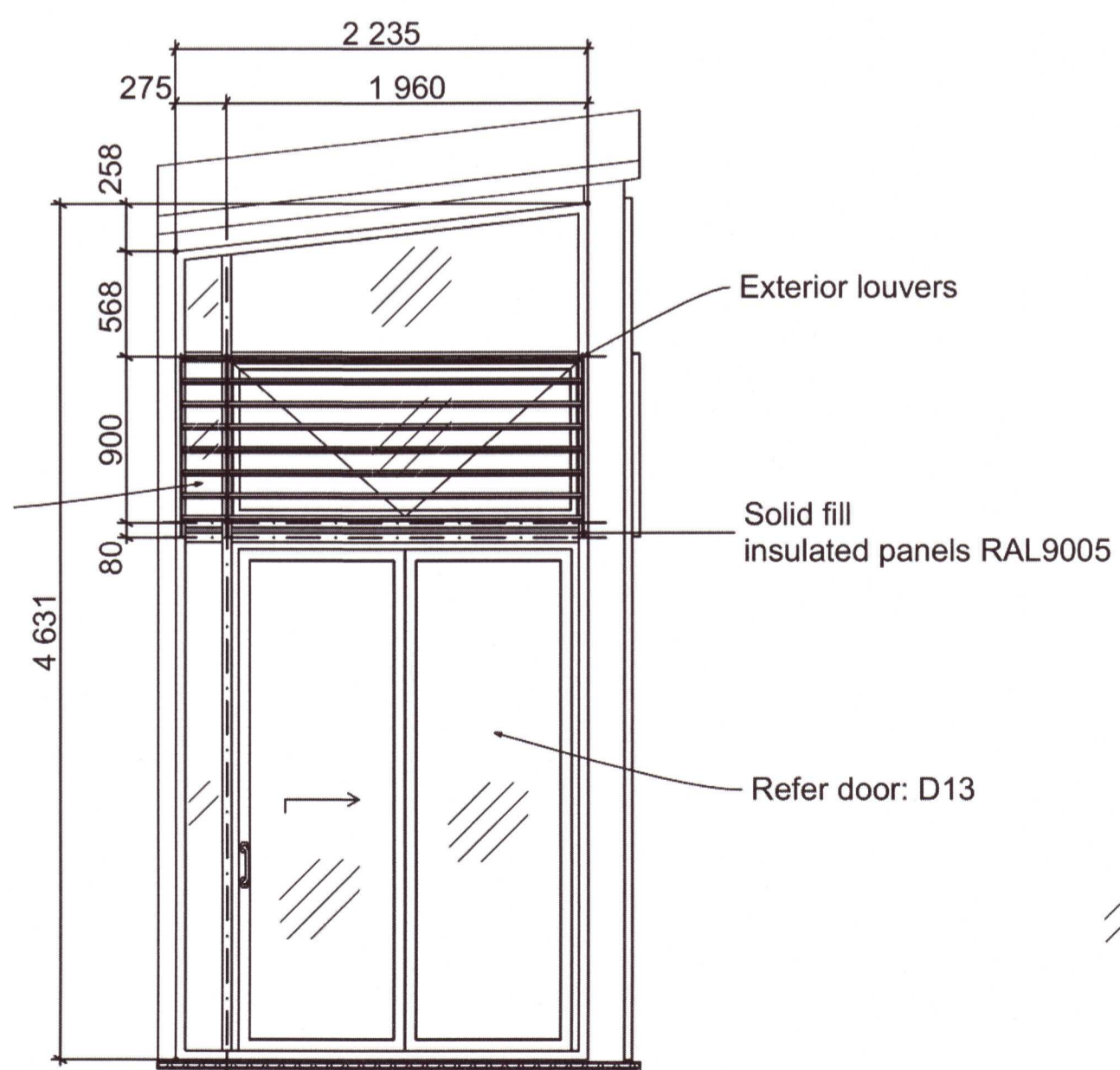
EF-01

Facade #1

**Notes:**

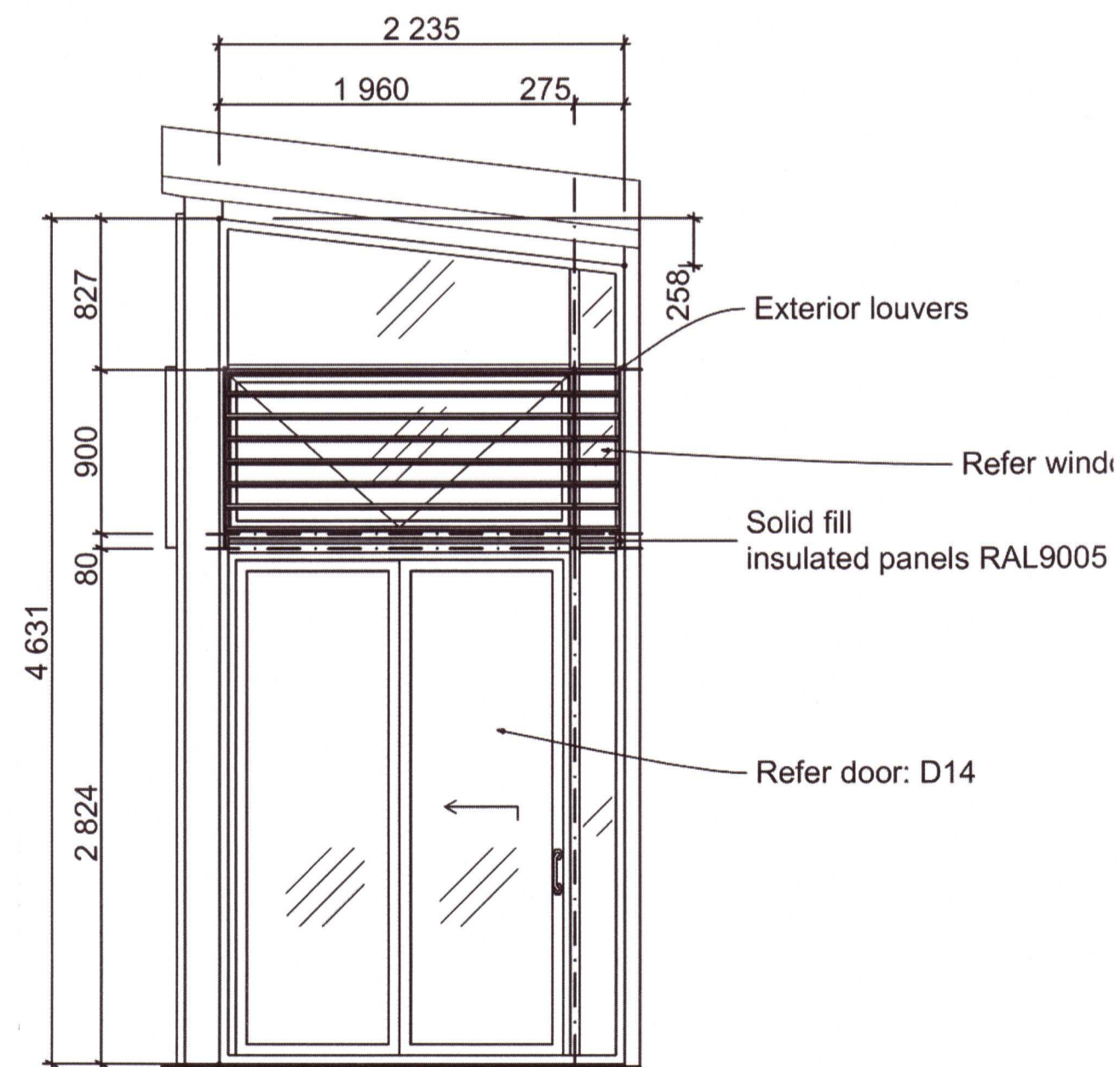
1. Refer to drawing 120623-ASH-01 for facades location.
2. Refer to documents: 120623-ASH-04 for windows & 120623-ASH-05 for doors schedule.
3. All dimensions are in [mm] .
4. All facades are installed outside steel frame structures.
5. Exterior louvers are to be made of aluminium (RAL9005).
6. All glazed unit are to be:
  - double, safety (VSG) glazed units,
  - 15-30% gloss (SGG Cool-Lite 154 II, by Saint-Gobain Glass or alternative),
  - low "E" argon filled (90%) glazing units with U-factor<= 1.2W/m2K.
7. Design wind pressure: 1.34kPa
8. Color of profiles: RAL9005 U.N.O..
9. Supports at: bottom + middle (uper profile of solid fill panels) + top (profiles connections)+ right + left.

Umhverfis- og tæknisvið  
Uppsveita  
21. nóv. 2019  
MÓTTÆKID



EF-03

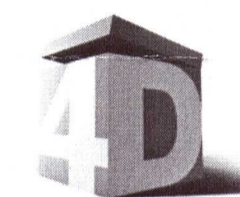
Facade #3



EF-02

Facade #2

Company Name



Street Vesthellinga 19  
City Oslo  
State/Country Norway  
Postal Code 1397

20210120

Project Title

**Hvitarnes**

Project Number

120623

Drawing Name

**Facade #1, Facade #2, Facade #3**

Drawing Status

**Final set**

Drawn by

**DD**

Date

**07-09-2014**

Checked by

**BB & OB**

Date

---

Drawing Scale

**1:50**

Layout ID

**ASH-03**

Status

Revision

**0**

*SKILTT 11/2019*