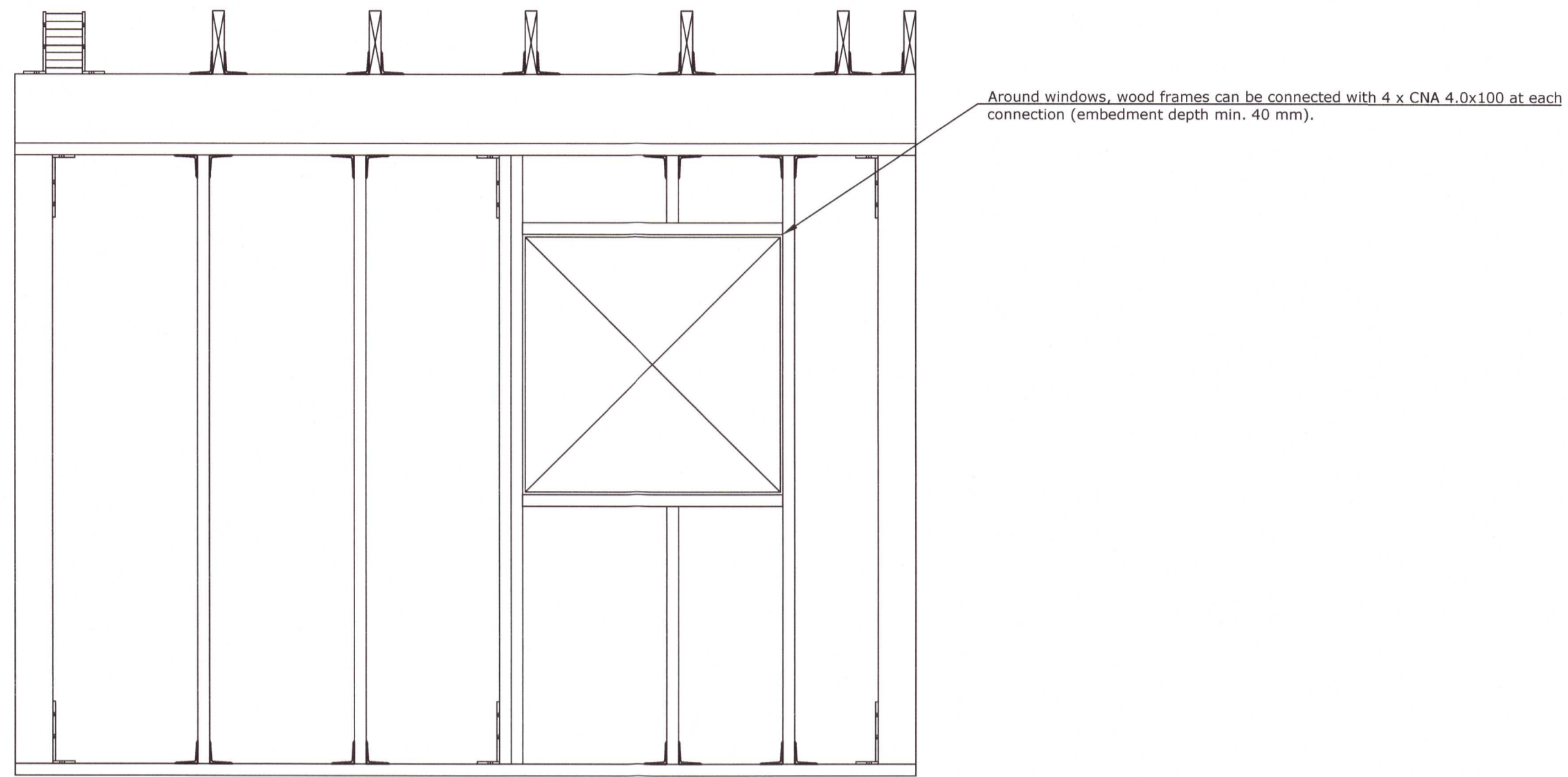


Structural details

Veggur X2-1 (example)

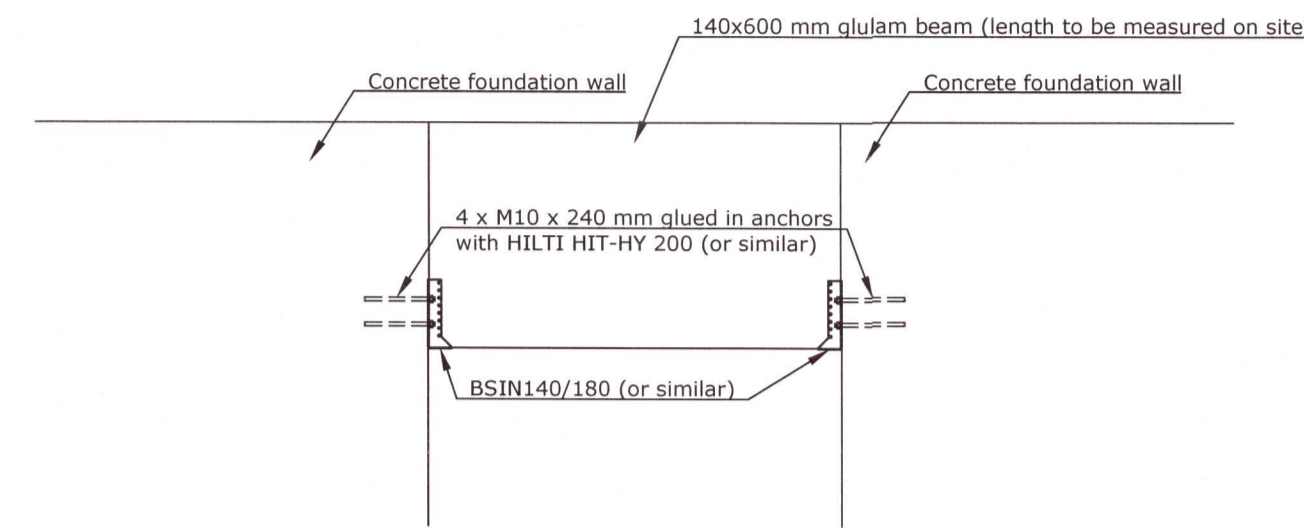
Roof rafters are connected to glulam beams with 2 x ABR9020 brackets (or similar) at each support with the following screw configuration:
 Vertical screw configuration into glulam beams: Full screwed CNA 4.0x60.
 A: Horizontal screw configuration into single, 45 mm wide rafters: Full screwed CNA 4.0x40.
 B: Horizontal screw configuration into rafters with singular width/combined width > 60 mm: Full screwed CNA 4.0x60

Glulam beams supported on glulam beams are connected with 2 x heavy brackets at each support with the following bolt/screw configuration:
 Vertical screw configuration into supporting glulam beams: 2 x M16 x 280 mm french screws (predrilled, 1 screw in each bracket)
 Horizontal screw configuration into supported glulam beams: 4 x M12 bolts through the profile.



Detail Z, 140x600 mm beam support

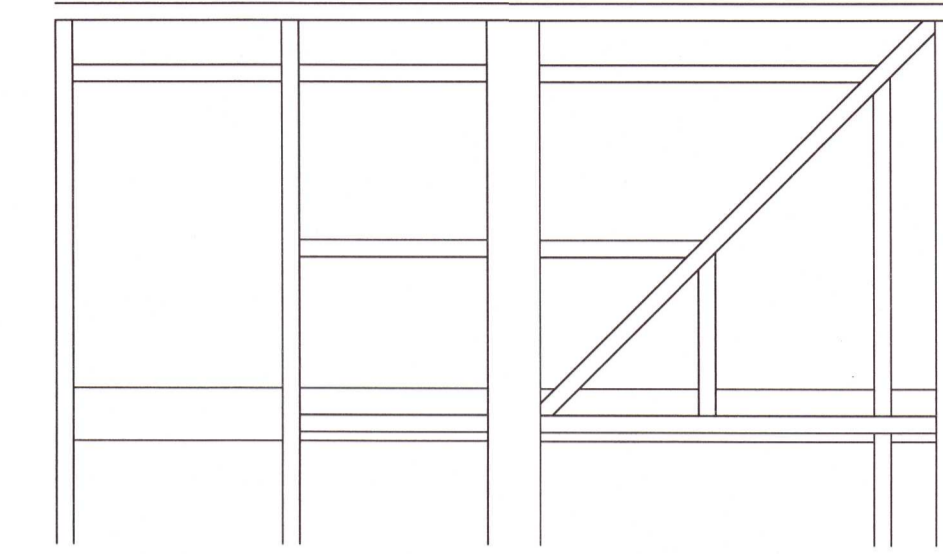
The 140x600 mm glulam beam supporting the terrace slab between concrete foundation walls is connected to (and supported on) foundation walls with beam shoes:
 BSIN140/180 (or similar) bolted horizontally into concrete foundation walls with 4 x M10 x 240 mm glued in anchors with HILTY HIT-HY 200 (or similar) in each bracket.



Roof edges/corner assembly

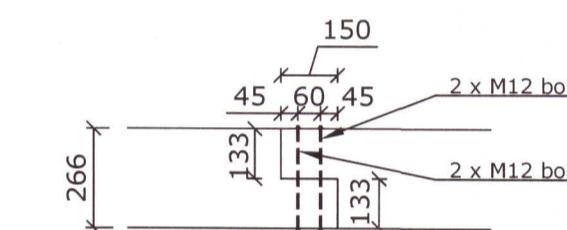
Rafter joints of 45 mm connected to 45 mm wood (at angles between 45 to 90 deg.):
 Connected by min. 6 evenly distributed CNA 4.0x100 screws (each with min. 40 mm embedment depth into supported rafter)

Where screws can't reach the required embedment depth, beam shoes or standard angle brackets are applied (connected with same amount of screws)



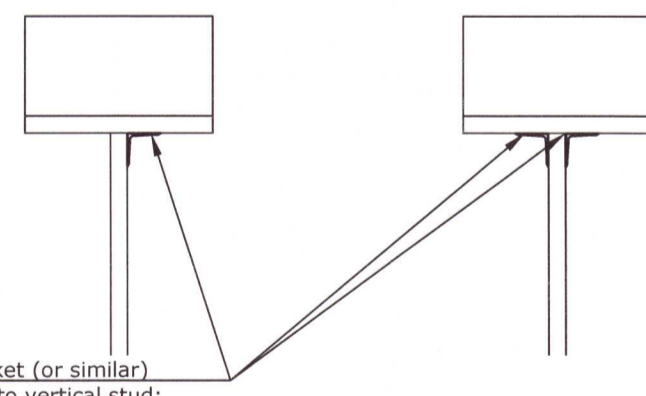
Glulam beam end connections

Glulam beams can be separated/joined at areas marked on the roof plan. Each connection has to be made in accordance to the roof plan (direction of the saddle is important). All connections are secured with 4 x M12 bolts (predrilled).



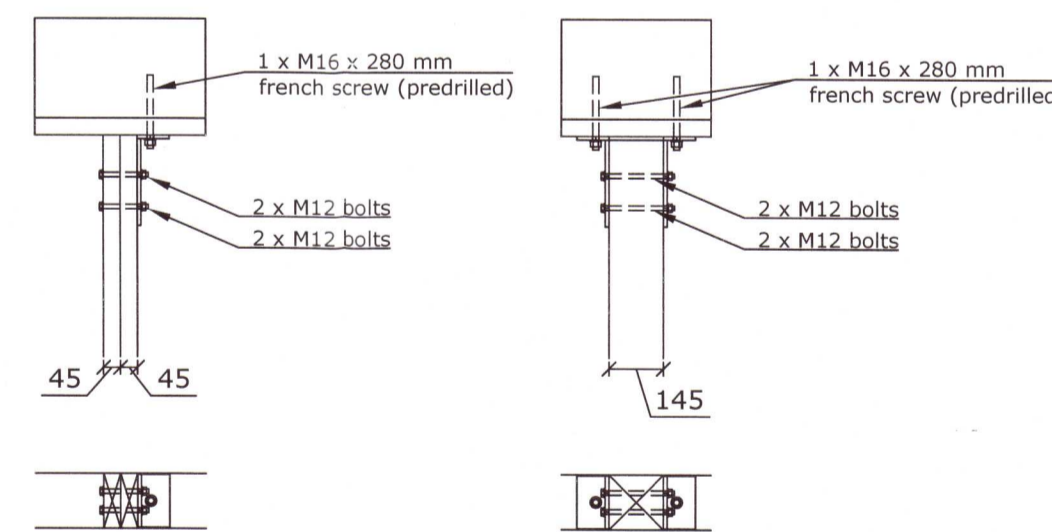
Glulam beam to wood frame connections

Wall frame connection to glulam beam, 1 and 2 standard brackets (type/amount of brackets is equal to bracket to concrete foundation configuration below)



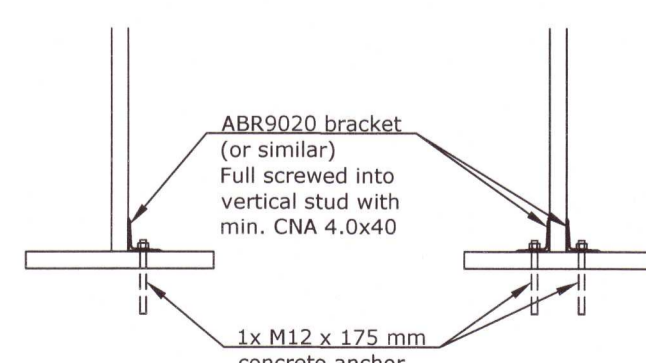
ABR9020 bracket (or similar)
 Full screwed into vertical stud: min. CNA 4.0x40
 Full screwed into hor. glulam beam: CNA 4.0x100 (through top piece)

Column connection to glulam beam, 1 and 2 heavy brackets (type/amount of brackets is equal to bracket to concrete foundation configuration below)

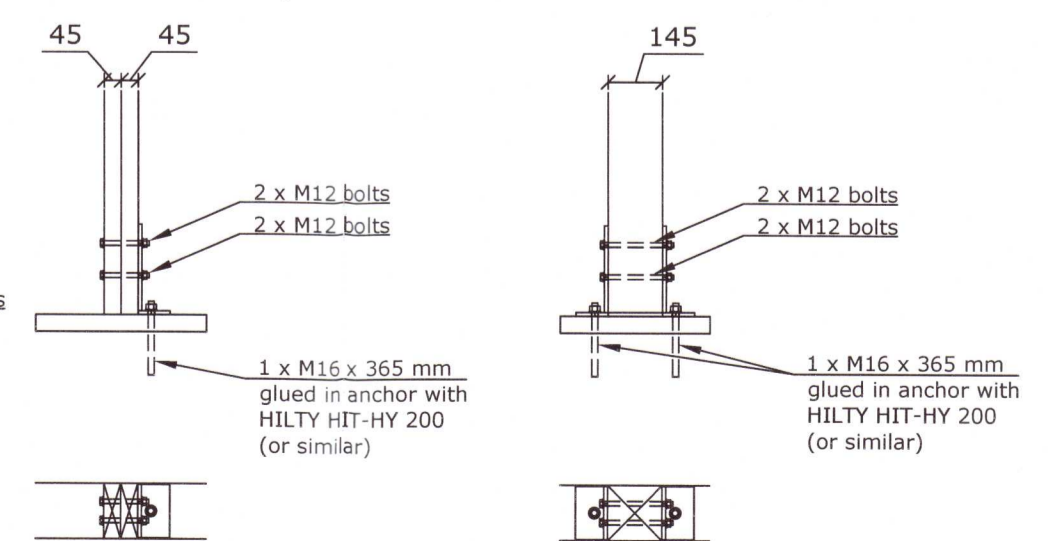


Wood frame to concrete foundation connections

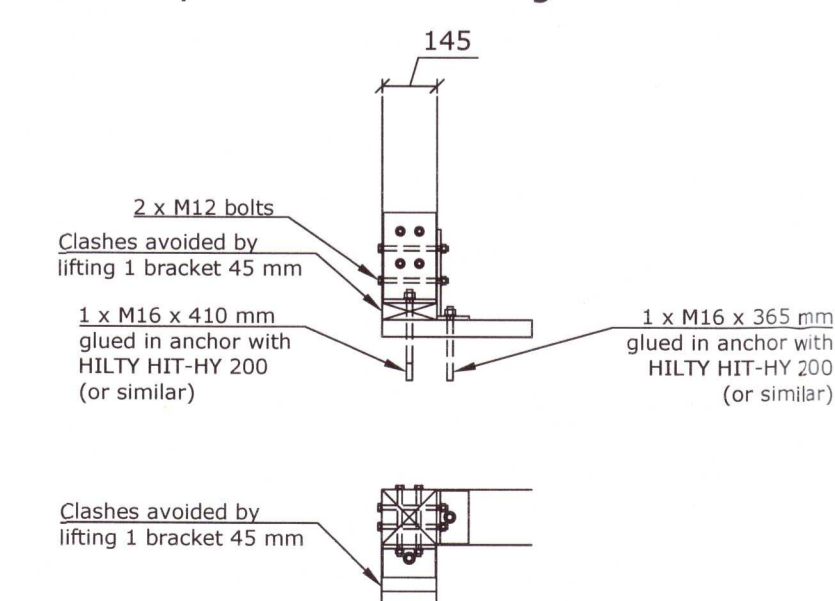
Wall stud connection to foundation, 1 and 2 standard brackets



Column connection to foundation, 1 and 2 heavy brackets



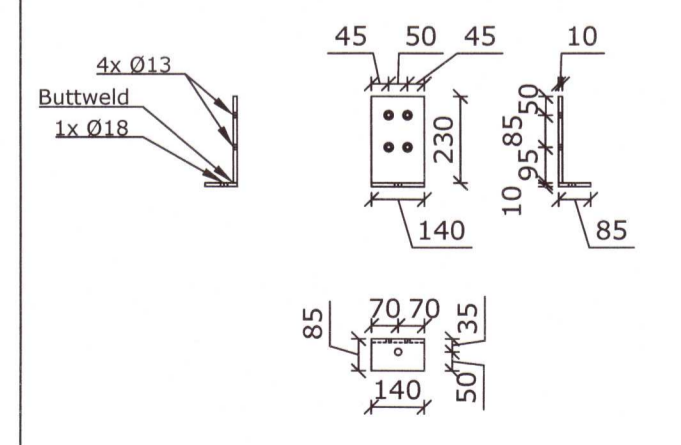
Column connection to foundation, 2 heavy brackets at 90 deg.



Standard angle bracket, ABR9020



Heavy bracket, t: 10 mm, S275 JR



Umhverfis- og tæknisvið Uppsveita
Yfirfarið
 16 AUG 2024
[Signature]
 F.L. Byggingarfulltrúi

20240752

Rev.	Date	Drawn by	Checked	Remarks	Approved
0	2024.06.28	TLA	FLL		FLL

Hrauntröð 50
 Project no.: 23-132
 Kári Arngrímsson *[Signature]* *[Signature]* 03066-7899

Structural details
 Sheet 1
 Drawing no. H50_BUR_5_XX_01
 Rev. 0

KI Kålgærende Ingeniører AS
 Herlevsvej 37 3. Sal
 DK-2400 Copenhagen NV
 +45 3210532 | contact@ki.dk
 www.ki.dk