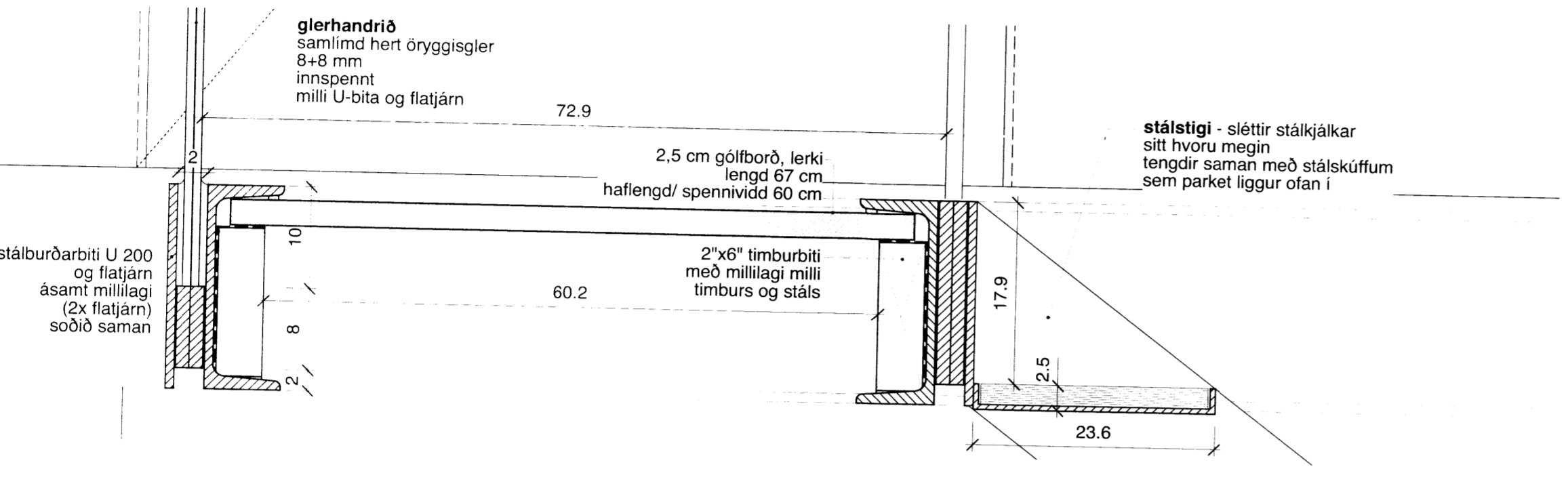


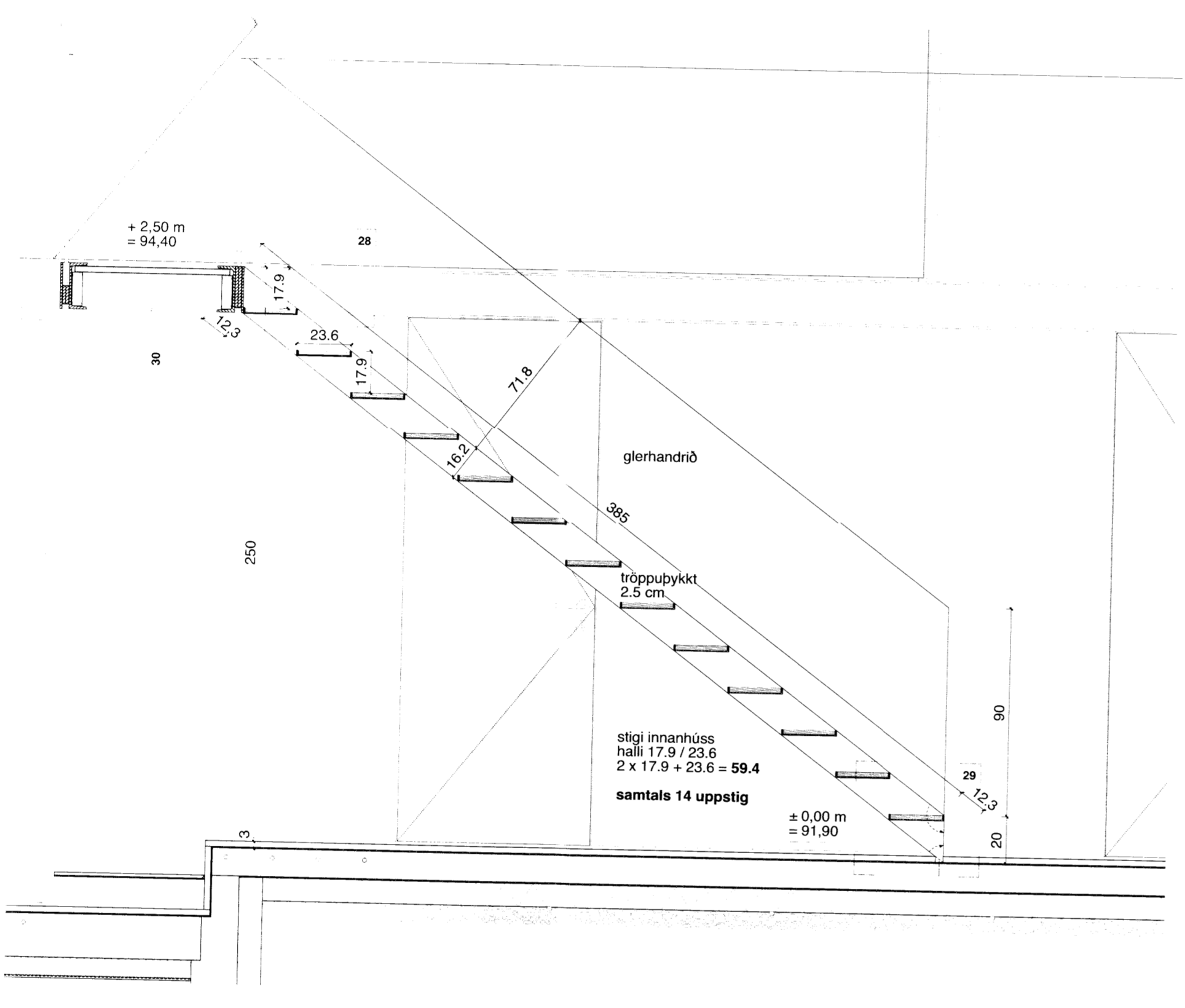
30

Stapi 4 aðalhús - deili

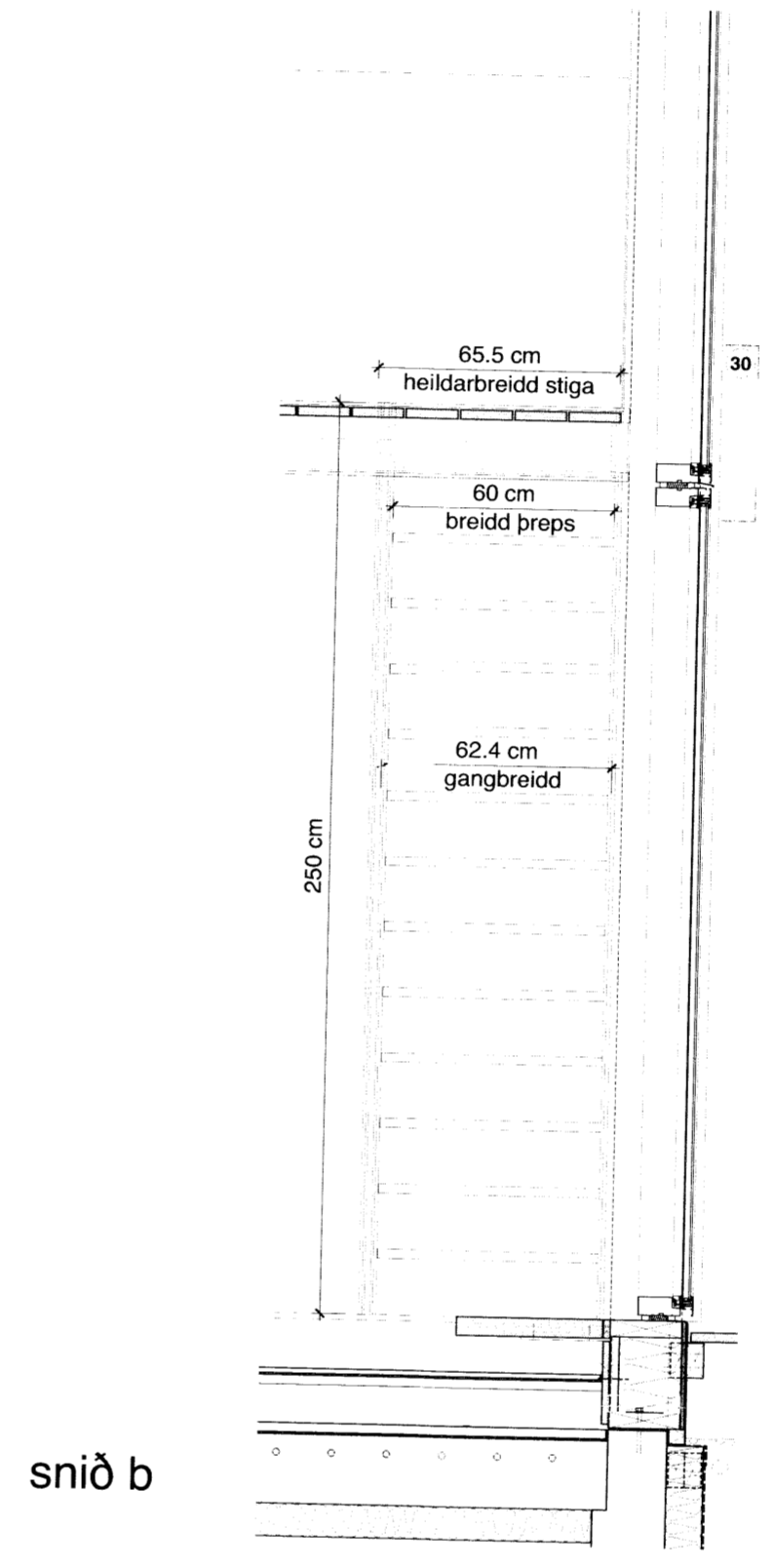
Skýringar
 Mælið ekki af teikningum. Öll mál skulu sannreymd á staðnum. Öll vafaatrið berist undir eftirlit. Allir skekkjur tilkynnast eftirliti strax. Öll mál eru í sentimetrum, nema ánað komi fram.



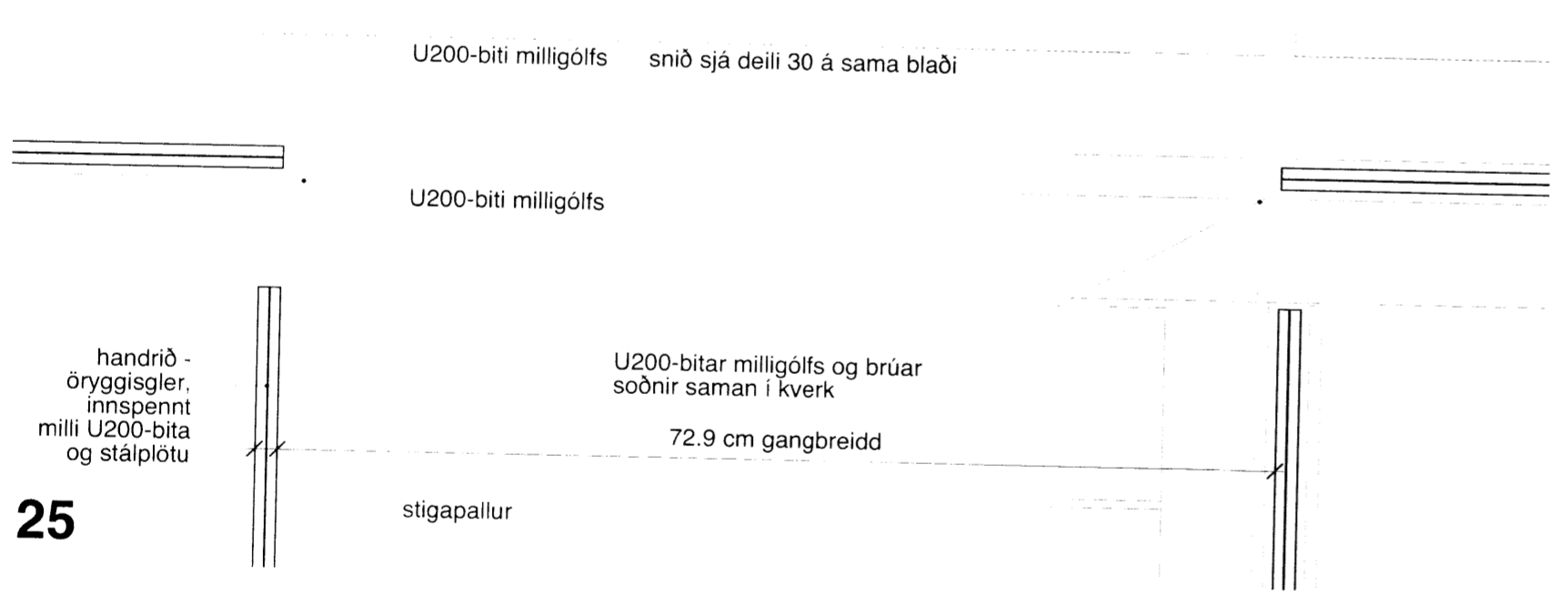
28



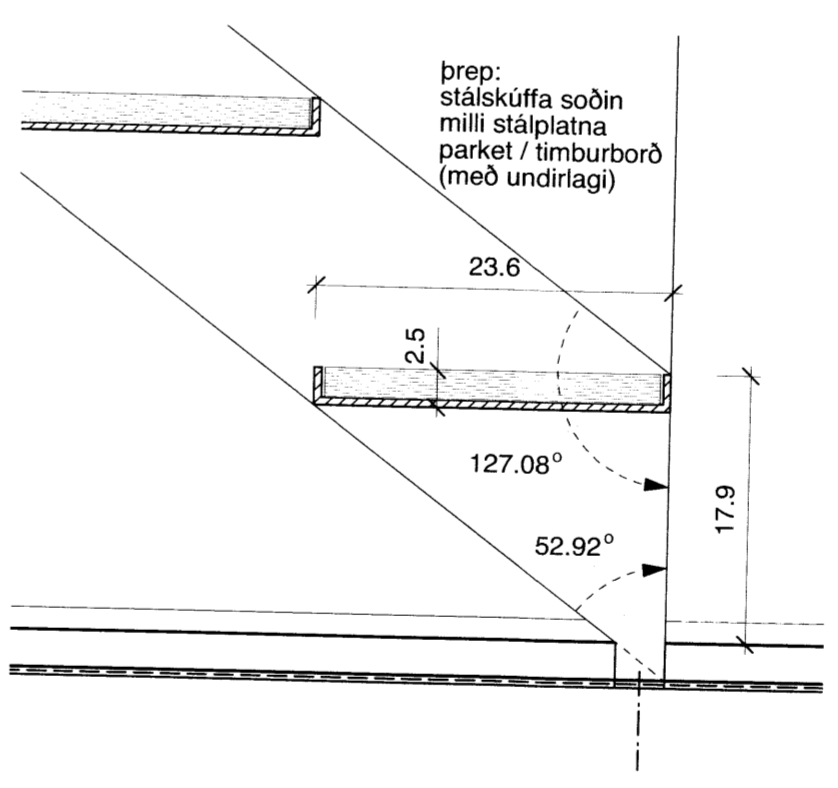
stigi innanhúss snið a - 1:20



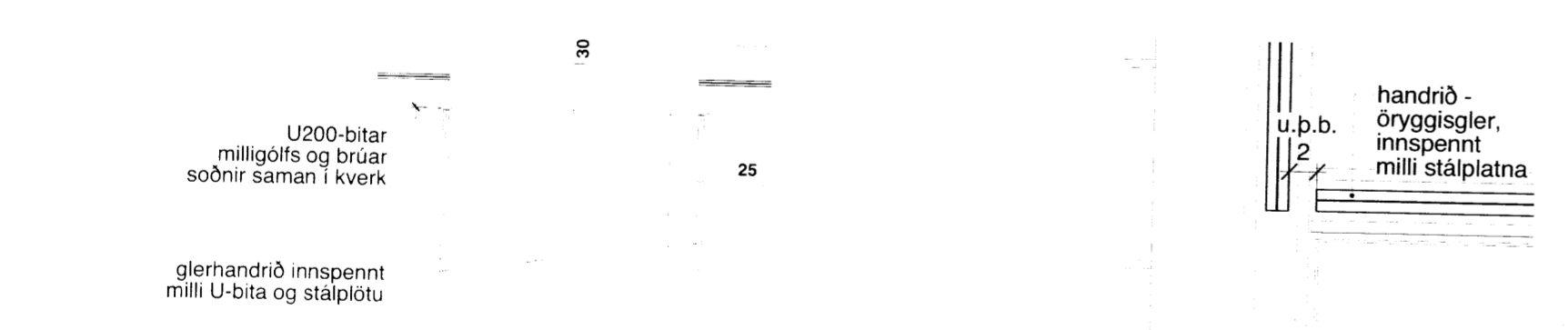
snið b



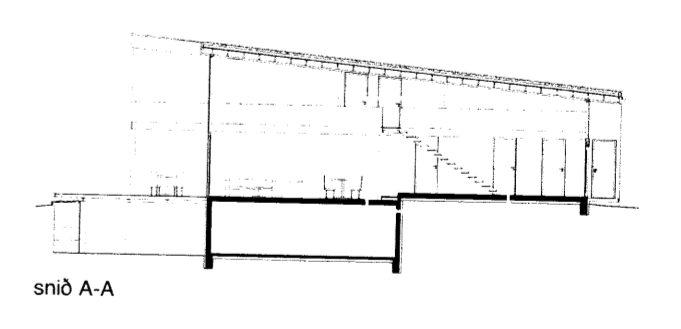
25



29

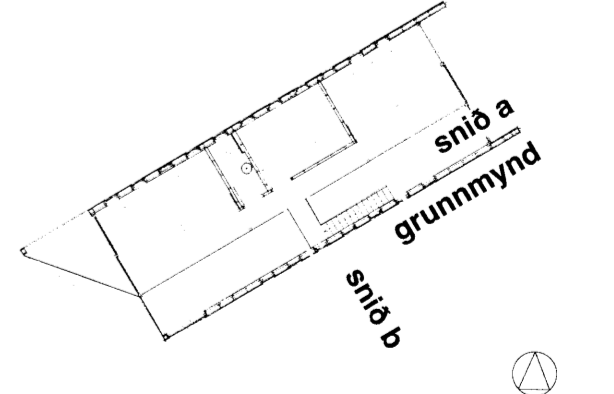
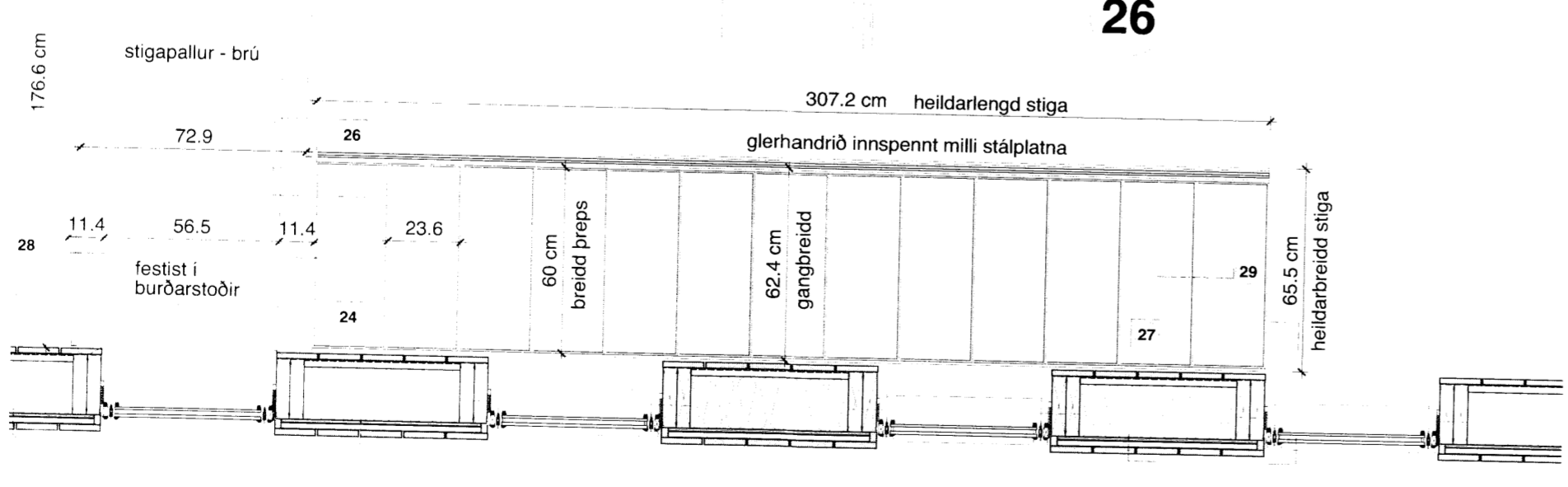


26

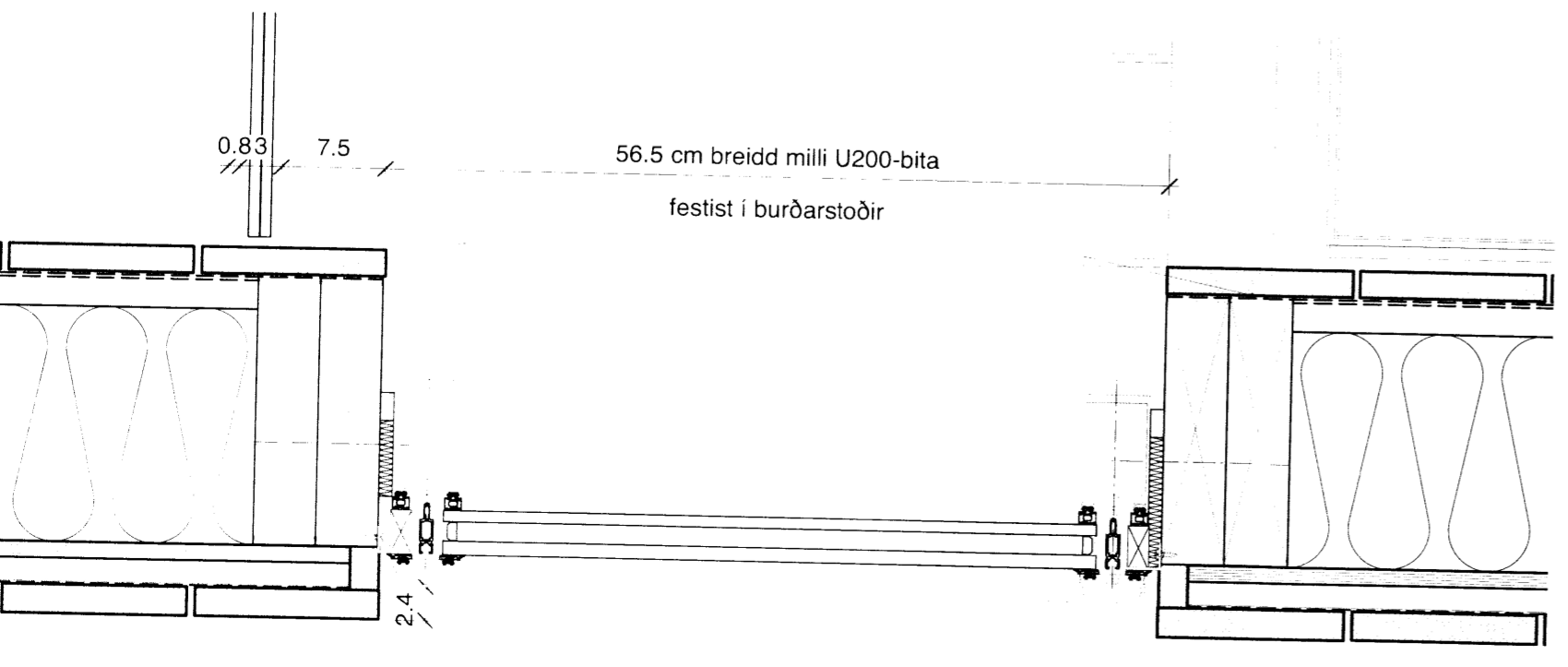


snið A-A

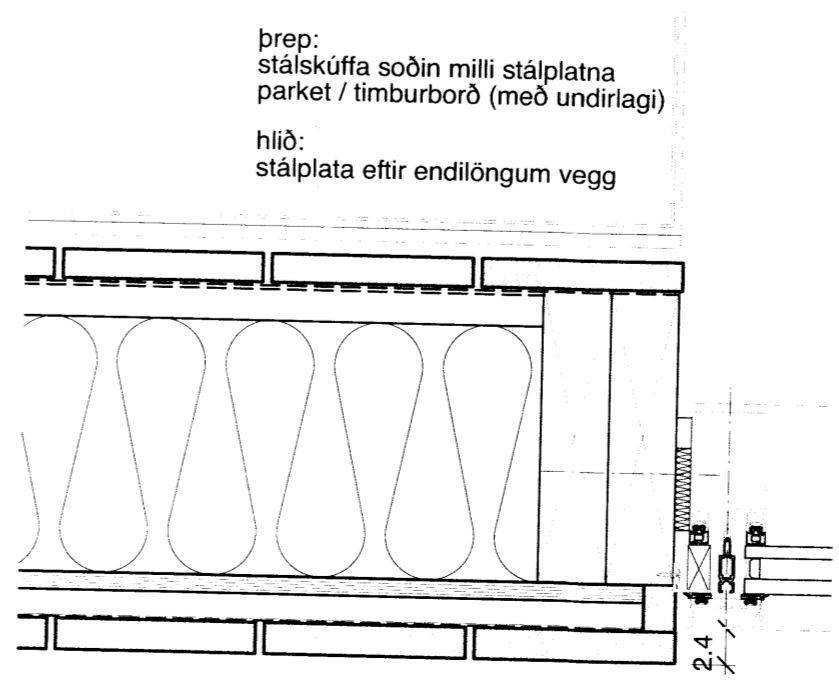
stigi innanhúss grunnmynd - 1:20



grunnmynd efrir hæðar



24



27

Vinnustofan Þverá ehf
 Skólavörðustíg 12 • 101 Reykjavík • sími 5514060 • fax 5614060 • arkiv.is
Stapi 4, sumarhús við Úlfjótavatn
 Grimsnes- og Grafingshreppi
 teikning: aðalhús - snið, lóðrætt / lárætt, í innsetiga og handrið
 hamað: VB verkfr.: 1.146
 teiknað: ML kvarði: 1/5/20 (A1)
 breytt: dags.: 23. Júní 2015
 yfirtar: Valdis Þjarnadóttir arkitekt / FSSA valdis@arkiv.is
 tölvuskra: Stapi 4 sumarhús verkefningar.mcd blaðnr.: 3.11

