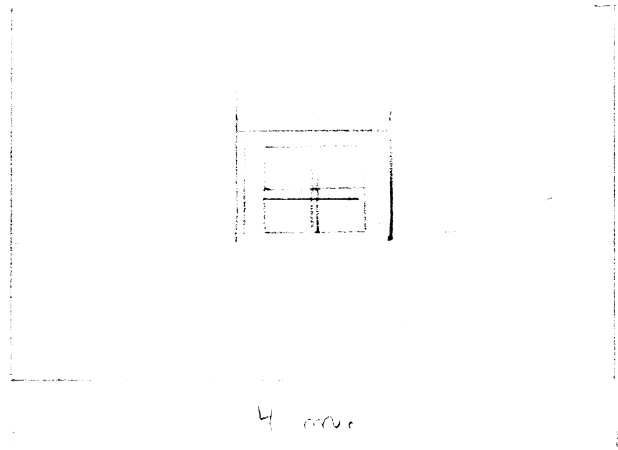
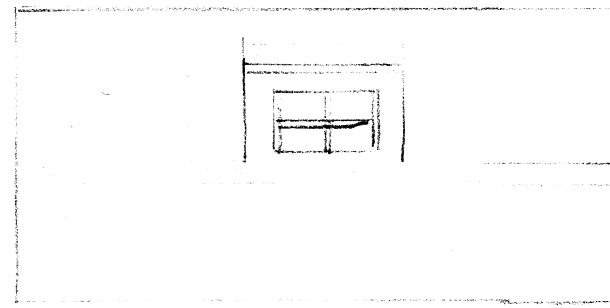


GEYMIÐ OG VILKAHLIS Í TOEFDÆJAKSTIL

A VÖÐ ML 22 Í BÚALEYRIBORGUM Í SCIMUNESI

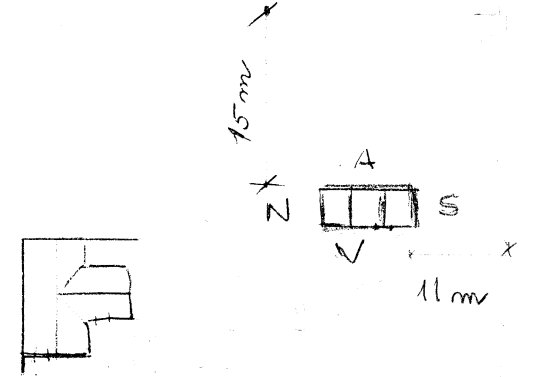


4 m
SÍÐUR



NORÐUR

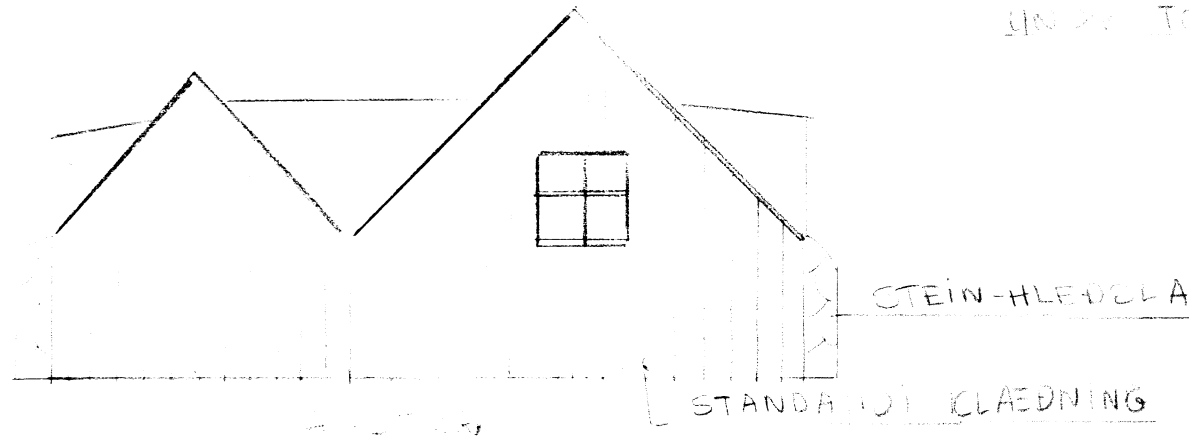
AFSTÖÐLA MYND



GOLF OG SPÉLDU LIG 2x4

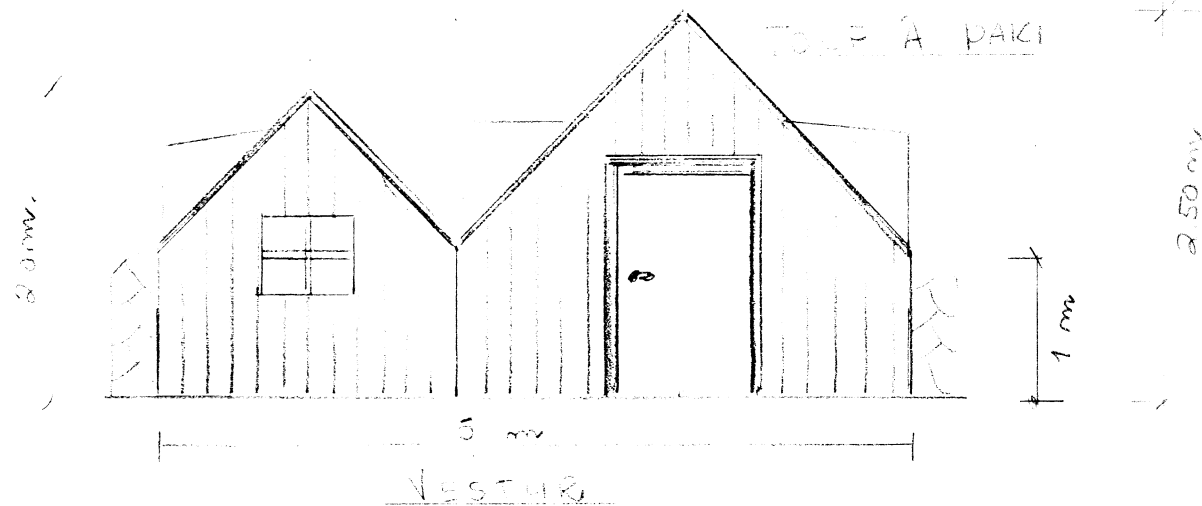
CLÆTT MED 1"x6" OG 12mm KRÖSKE Á ÞAK

LINJA TOE = SARNAFIL-DUKUR, SÖNN A SANK.



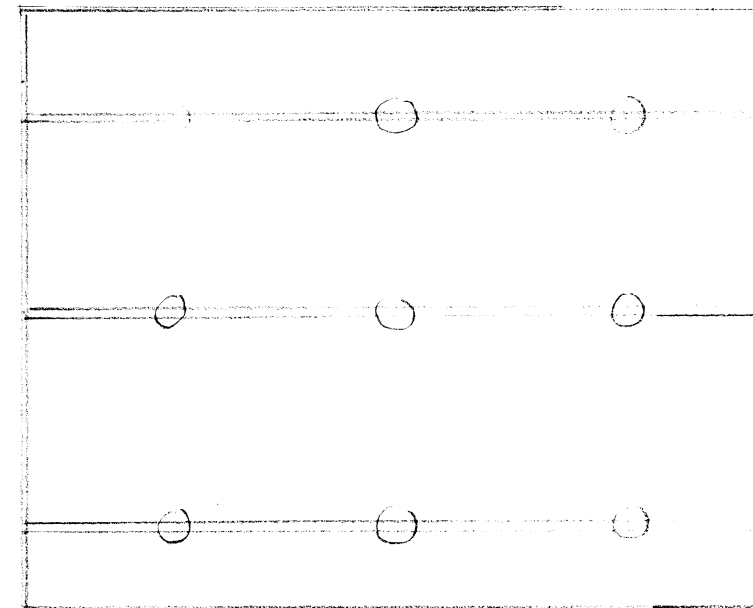
STEIN-HLEDULA

STANDAÐI CLÆDNING



TOE Á ÞAKI

5 m
VESTUR



→ DREGAKAK 4x4

→ GOLF 2x4

→ GOLF 12mm 1/2 SPÉLDU

→ LINDRESTUR 4x4 STAURAC

TEIÐING Þasar D. Þorsteinsson Júní 2004
 HIRASMEIÐMEISTARI
 ARAHÓLUM 2 RÚK 893-8370