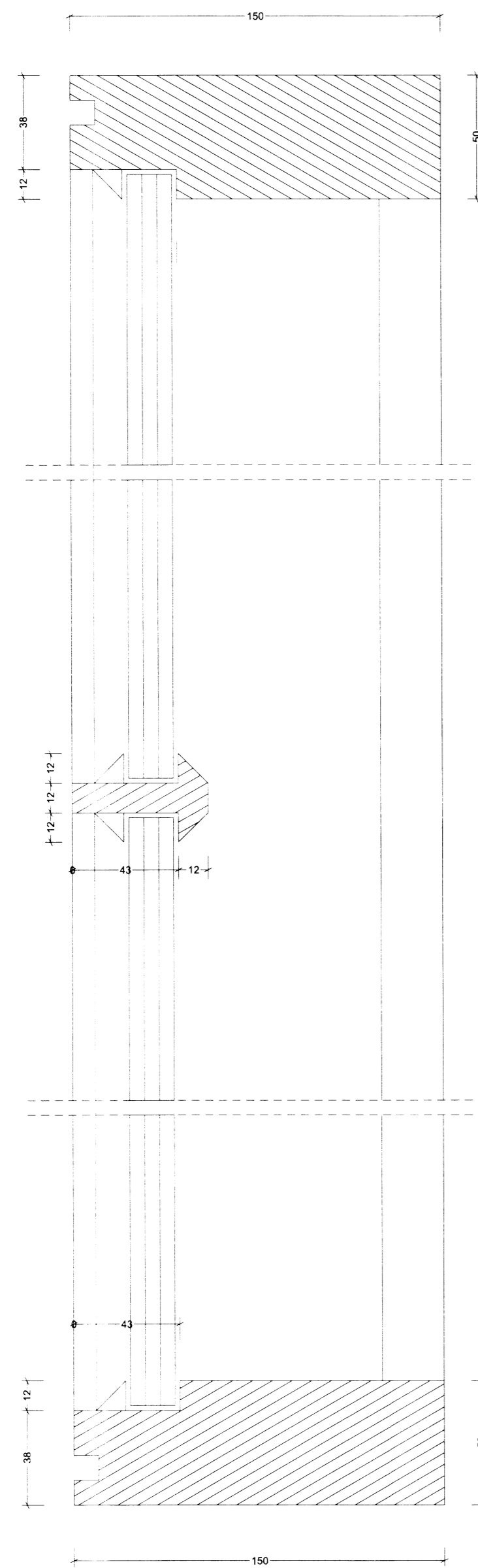
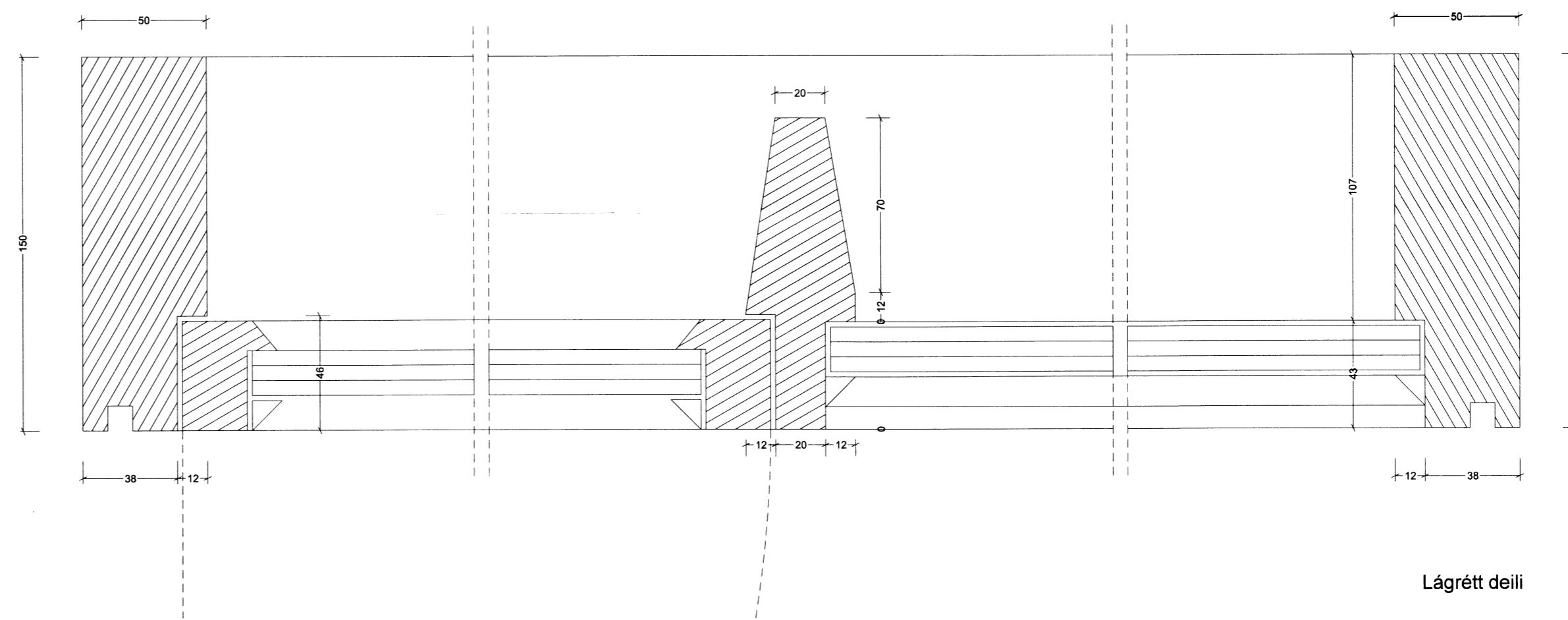


DL



Lóðrétt deili



Lágrétt deili

Sumarhús í landi úteyjar við Laugarvatn

Gluggateikningar
Fastanúmer 22066645 Landnr. 168207

SÉRUPPDRÁTTUR

6551
4.02

DAGS. 14.5.2014

davíð kr. pitt arkitekt faí 101069-5249
tvíeyki ehf, skildinganes 11, 101 reykjavík

dkpitt@simnet.is
f. 896 2490