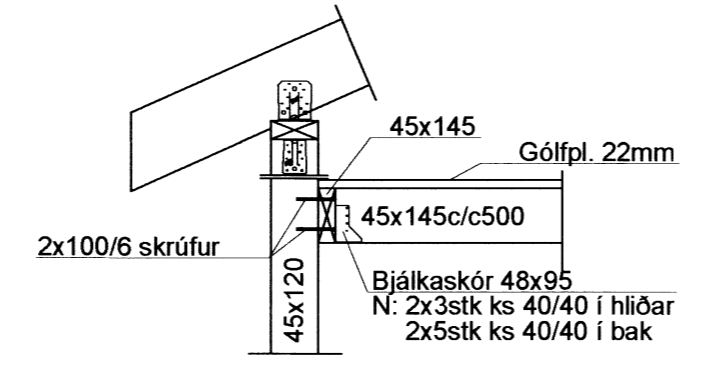
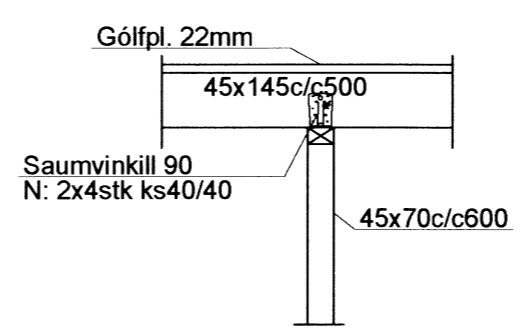


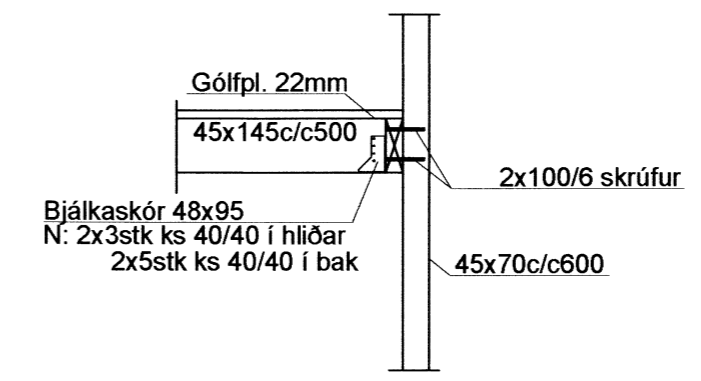
V1 1:20



V2 1:20

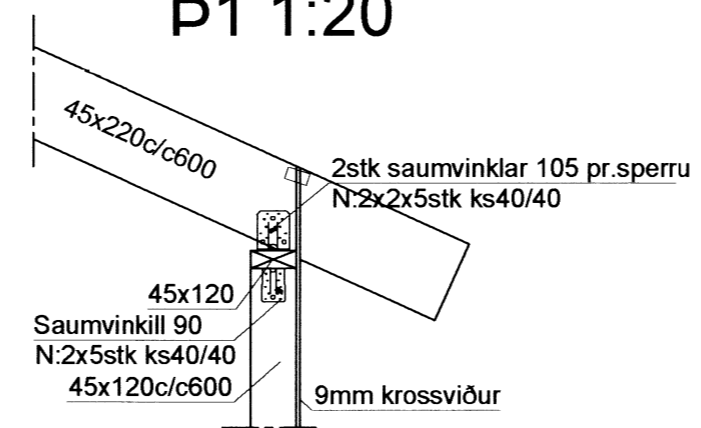


V3 1:20

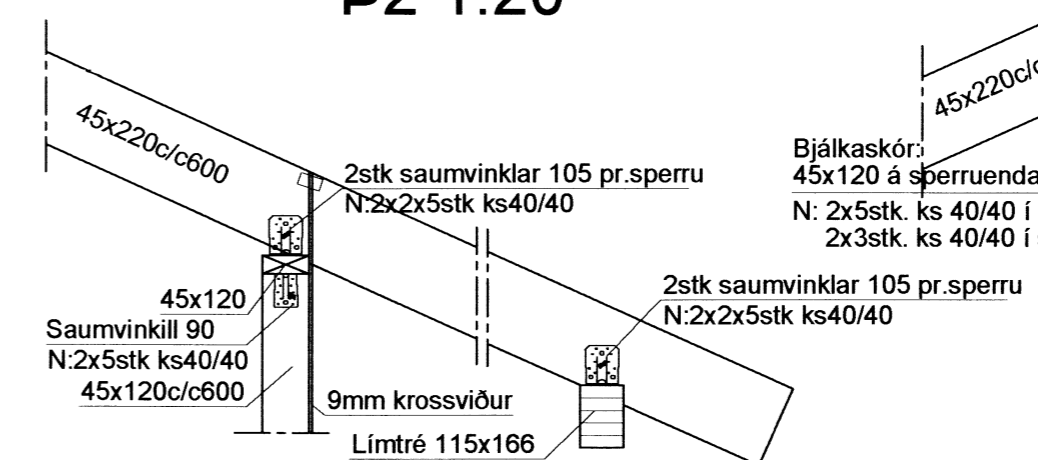


Handwritten signature

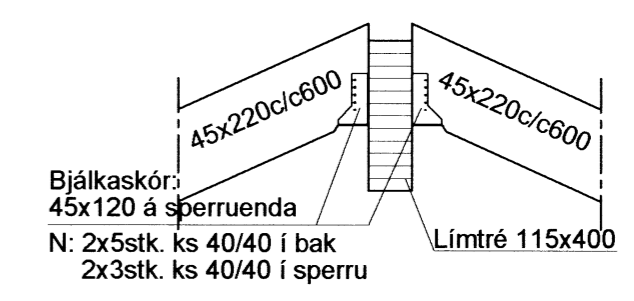
B1 1:20



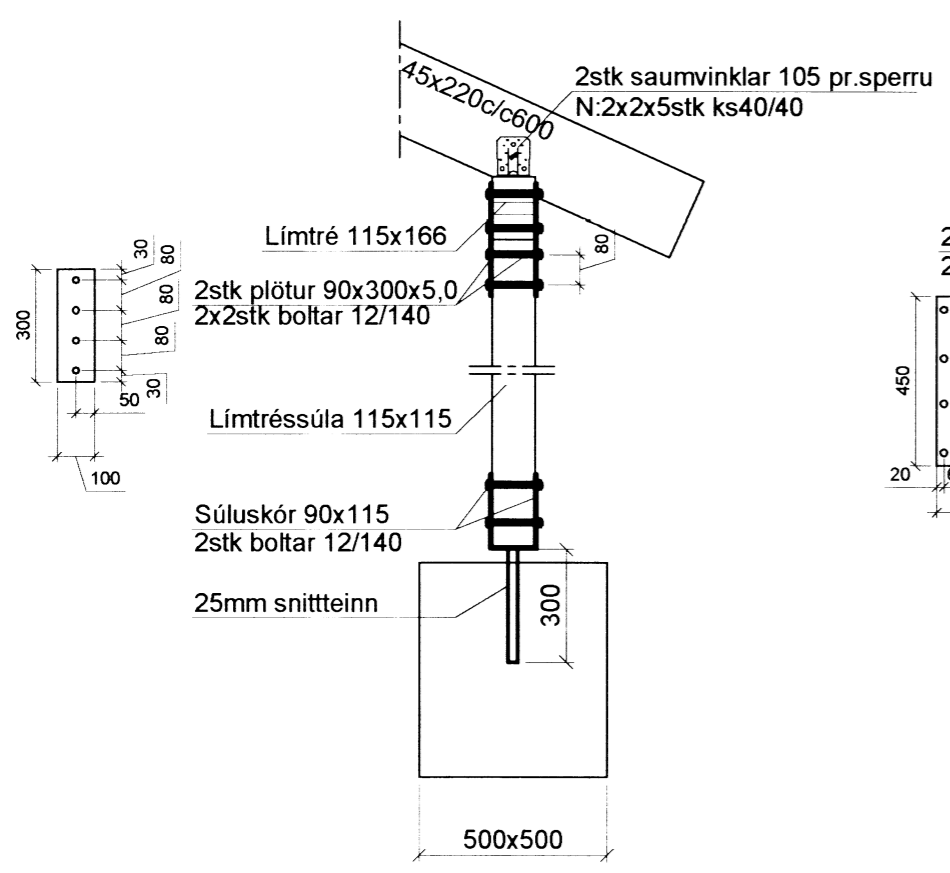
B2 1:20



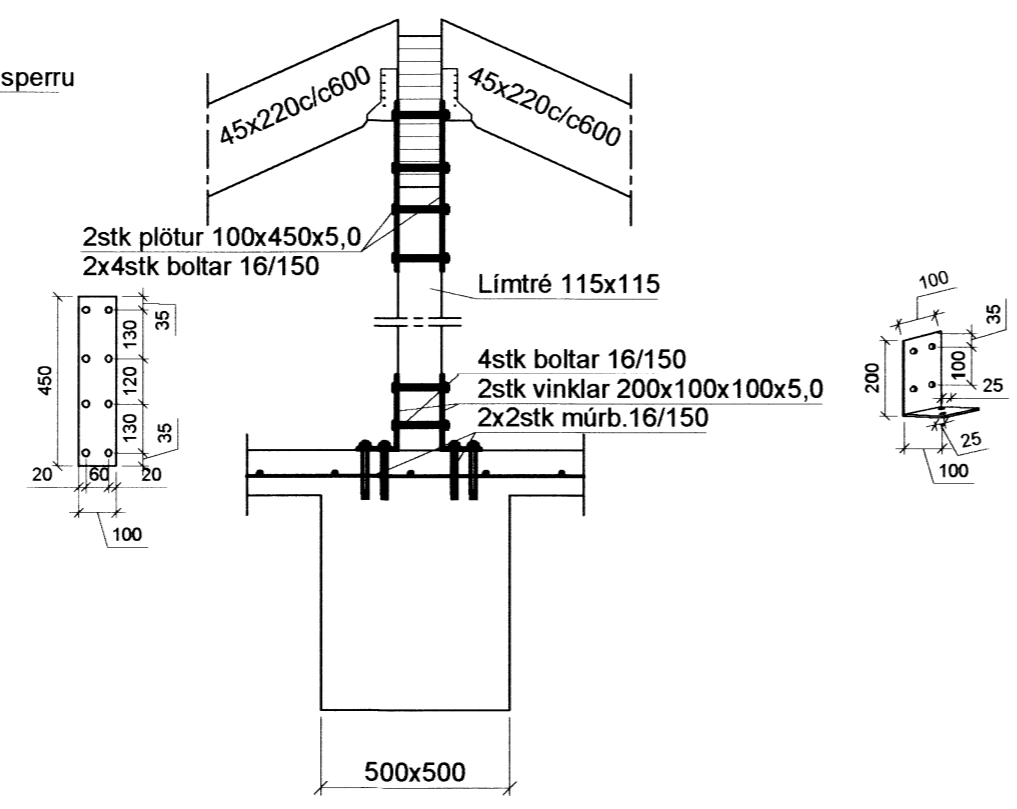
B3 1:20



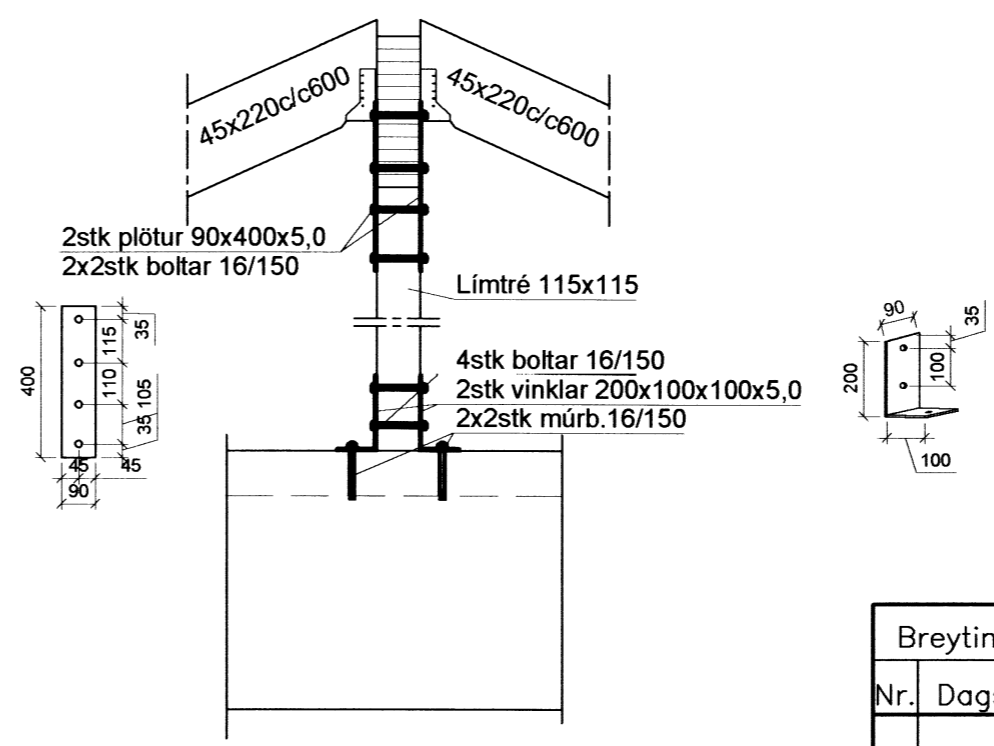
S10 1:20



S11 1:20



F1 1:20



Sperrur á góflum negldar utaná lóðréttar stoðir með 3stk 5"saum pr. stoð.

Grindarefni er úr 45x120 c/c600 og skulu lóðréttar stoðir festast við toppstykki og botnstykki með saumvinklum og neglast með kambsaum. Botnstykki skal boltað í sökkul með 12/140 múrboltum c/c600. Grind skal klæða með raka límduðum 9mm krossvið skrúfaður með 5/40 skrúfum c/c150 á hornum en 5/40 skrúfum c/c200 annarstaðar.

Timbur í gæðaflokki T1, allur saumur og tengi "galv". Boltar skulu vera M8.8. Hönnun og framkvæmd verksins skal vera í samræmi við gildandi staðla og reglugerðir.

Yfirfara skal vandlega allar málsetningar áður en smíði hefst.

Breytingar			KRISTÍNARBRAUT 7, EFRI-REYKIR
Nr.	Dags.	Nafn	
			Verkfræðistofa Þráinn & Benedikt Laugavegi 178, 105 Rvk. Sími: 553 1770, 568 7775, Fax: 568-7701 Netfang: verkfradistofa@verkfradistofa.is
			Burðarvirki veggir, milliloft og þak. Snið
			Áritun aðalhönnuðar:
			H BS T BS S M 1:20 Nr. B103 Dags. okt. '12 080149-3609

Handwritten number 8520