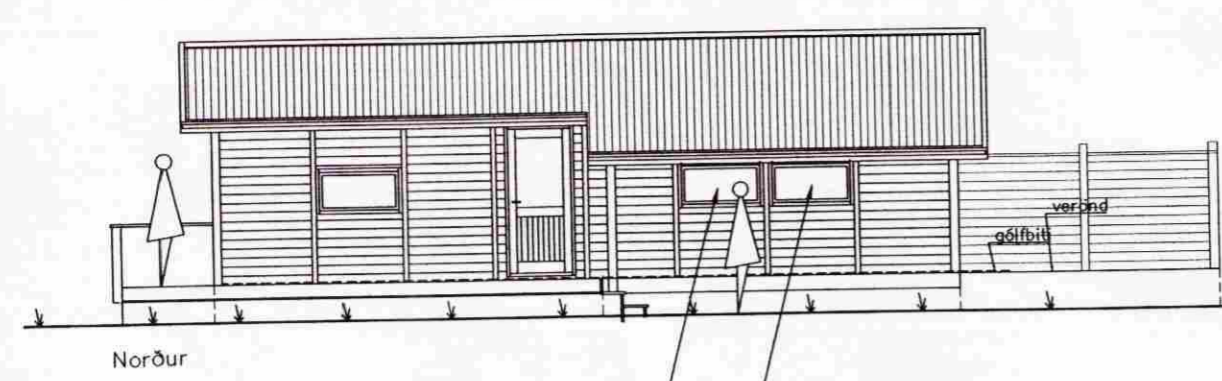
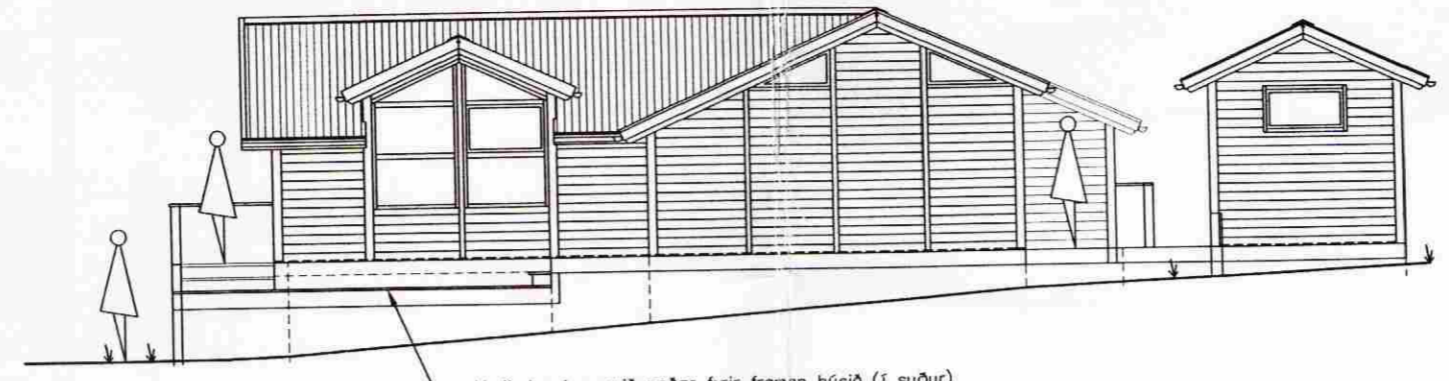


Samp. 7/3 2000  
 BYGGINGARFULTRÚ  
 GRÍMSNES OG GRÁFNINGSHEPPUR  
 Hilmar Þinnarney



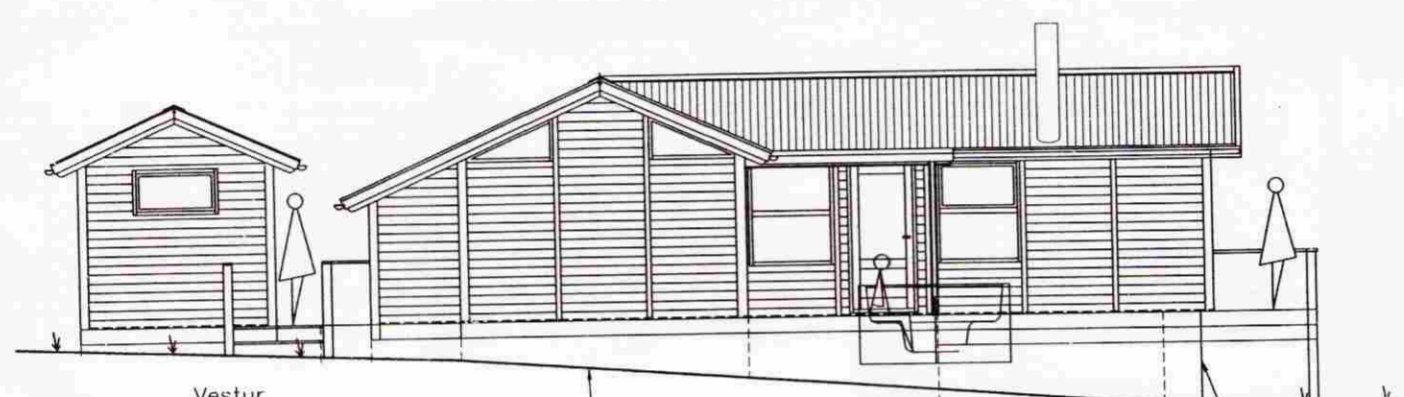
Norður

Björgunarp 1040 x 600mm  
 Toppengdur gluggi.



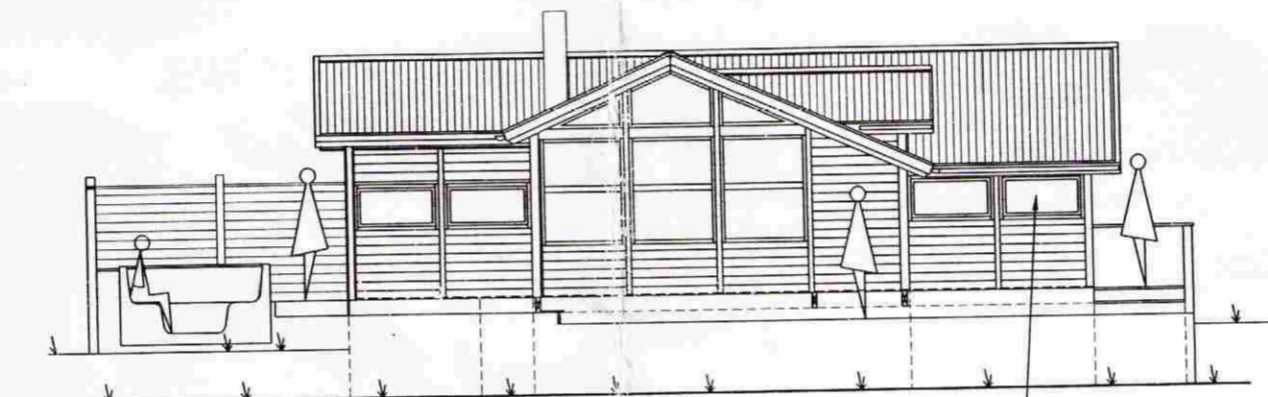
Austur

Verönd getur verið neðar fyrir framan húsið (í suður)  
 hér sýnt 36 cm neðar eða eins og fremrihluti  
 veröndar er í dag.



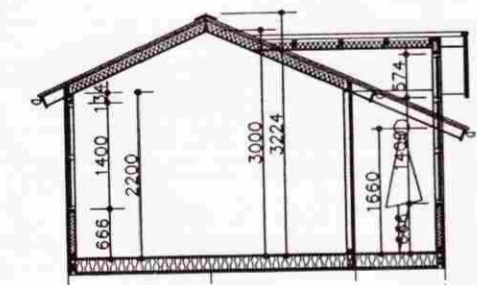
Vestur

Núverandi heðarlega lóðar við allar  
 húshliðar verður óbr.

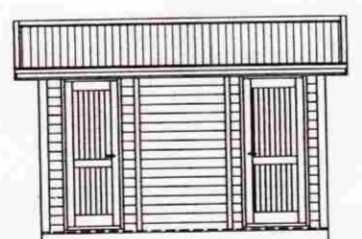


Suður

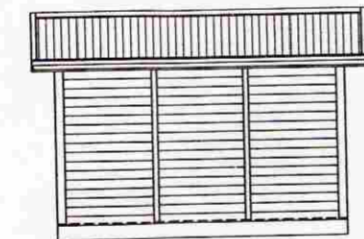
Björgunarp 1040 x 600mm  
 Toppengdur gluggi.



Snið A-A

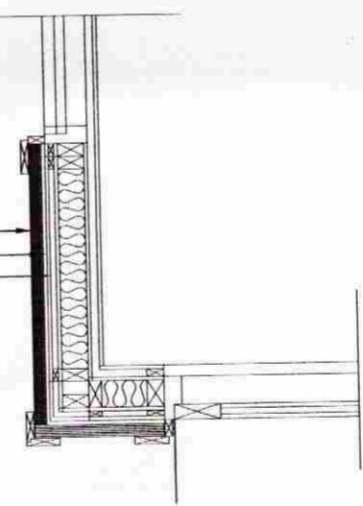


Geymsla -  
 Suður

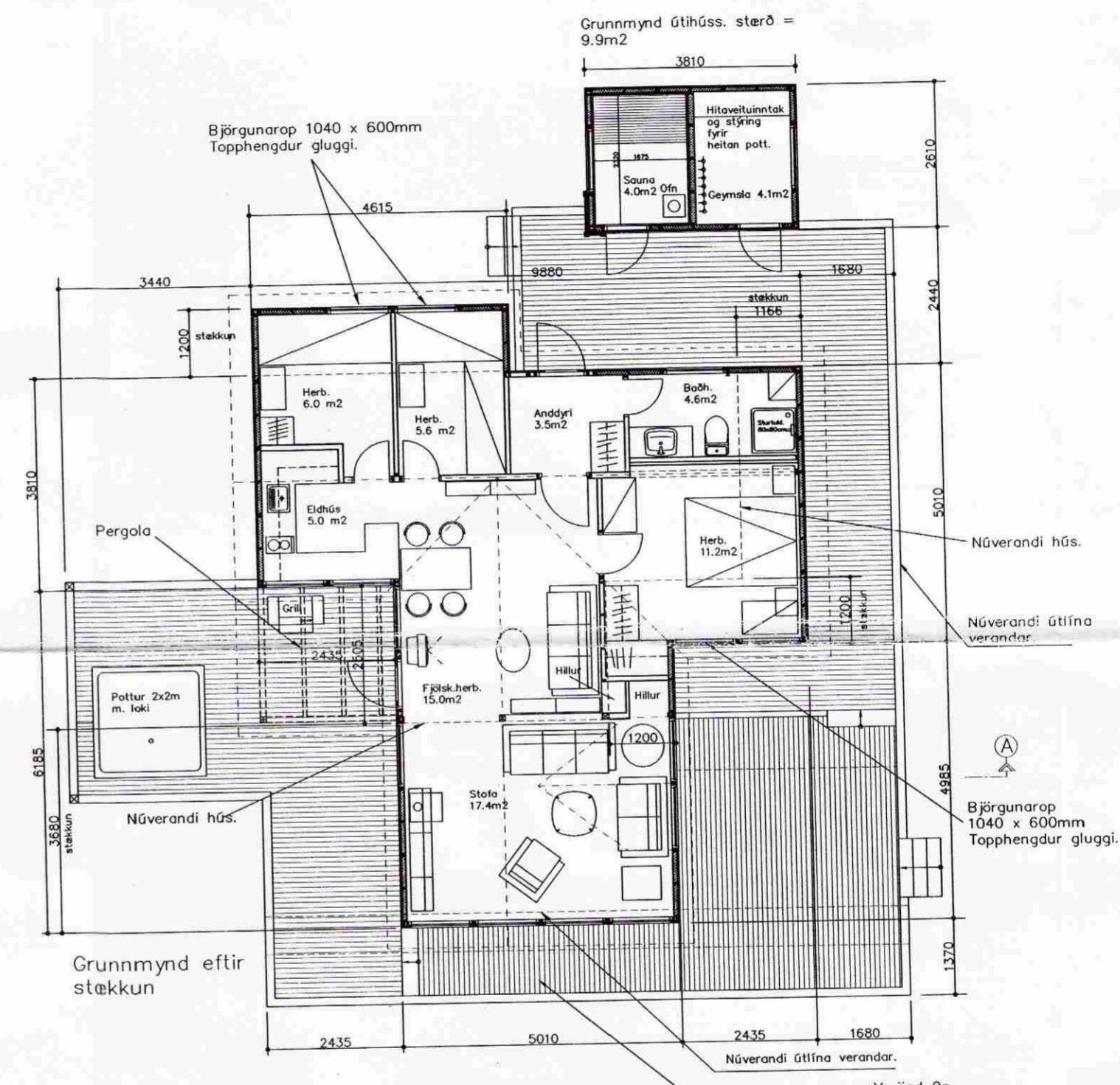


Geymsla -  
 Norður

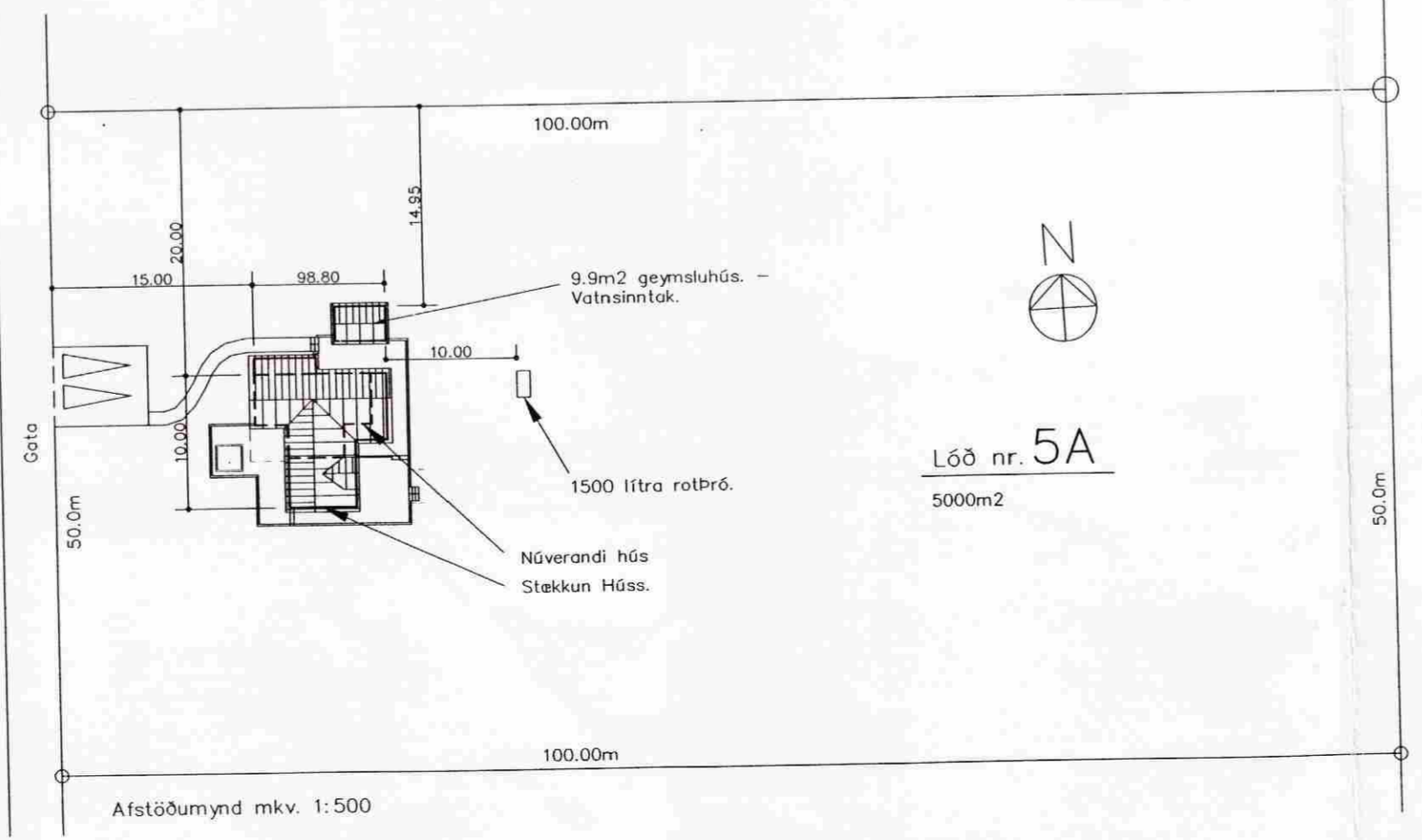
Sniðmynd í útvegg:  
 32 mm kúpt bjálkaklæðning  
 10 mm loftresibil  
 Núverandi krossviðarklæðning



Deililausn: Grunnm.  
 Útveggur.



Grunnmynd eftir  
 stækkun



Afstöðumynd mkv. 1:500

Löð nr. 5A  
 5000m<sup>2</sup>



Byggingarskjeri  
 Guðjón S. Snæbjörnsson  
 mianameistari  
 Kp. 270455-4259

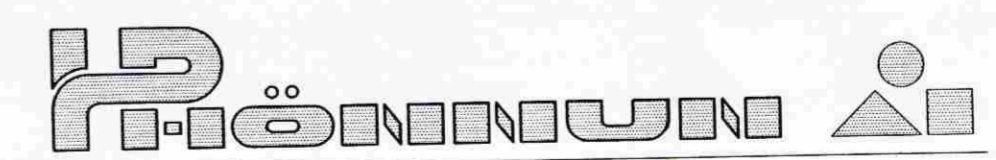
Skýringar: Hús eftir breytingu.

Hús bruttó m <sup>2</sup> .....	71.4 m <sup>2</sup>
Geymsluskúr bruttó m <sup>2</sup> .....	9.9 m <sup>2</sup>
Pallar.....	70.0 m <sup>2</sup>
Hús bruttó m <sup>3</sup> .....	207.6 m <sup>3</sup>
Geymsluskúr bruttó m <sup>3</sup> .....	27.3 m <sup>3</sup>

Löð.....5000.0 m<sup>2</sup>  
 Nýtingarhlutfall.....0.016

Hús fyrir breytingu:  
 Samþykkt þ.22.06.1987

Hús.....	42.2 m <sup>2</sup> bruttó
Pallar.....	22.5 m <sup>2</sup>



DALSHRAUN 13. 220 HAFNARFJ. S-555-2235 FAX-555-2235. BOX 275.  
 HELGI K. PÁLSSON HÚSG. OG INNHÚSSARKITEKT FHL. hpalsson@centrum.is

VERK: Sumarhús nr.5A  
 Grímsneshreppur. (Land múrara í Þrastarskógi)  
 Breyting: Stækkun húss.  
 Grunnmynd, útlit, sneiðmynd og afstöðumynd.  
 EFNI:  
 SAMP:

BREYTT:	MÆLIKV: 1:100 og 1:500
HANNAD:	HP.
TEIKNAD:	HP.
YFIRF.:	
SAMP.:	SKRÁ NR. 901SUMAR.DWG
VERKNR.:	9901
DAGS.:	14.03.2000
TEIKN.NR.:	01