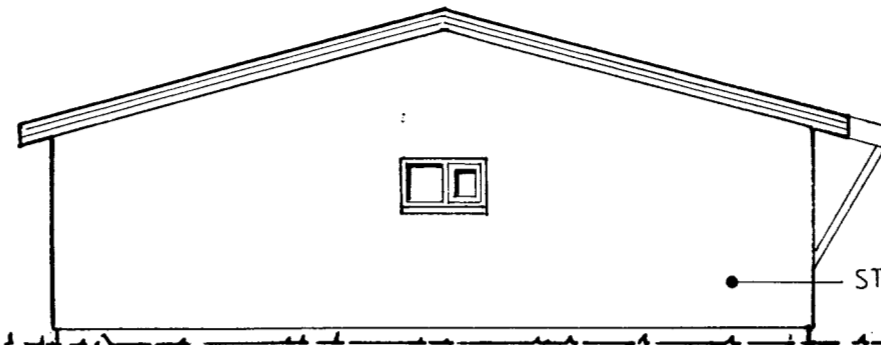
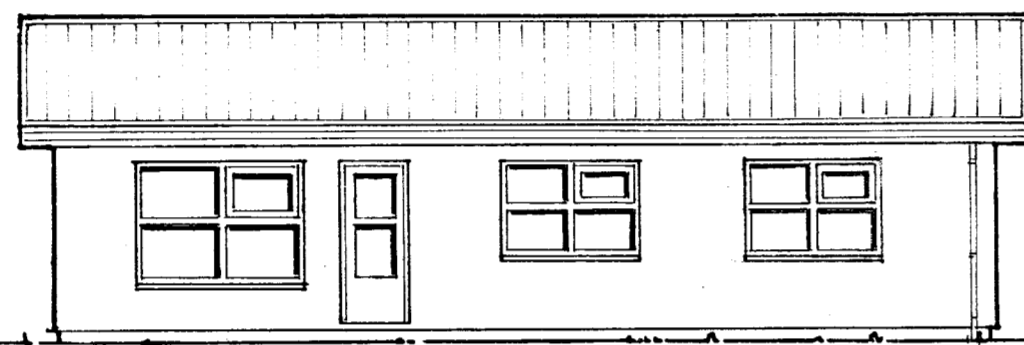


NORÐUR

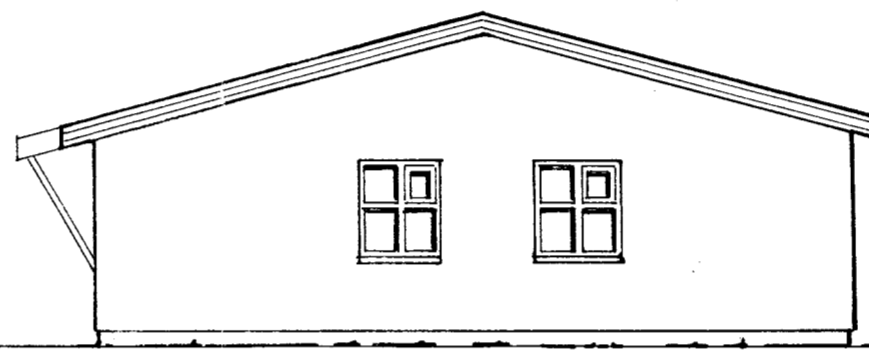
HÆÐ GLUGGA FRÁ PLÖTU 100 SM  
HÆÐ ANNARRA GLUGGA 90 SM OG  
STÓFUGLUGGA 60 SM FRÁ PLÖTU



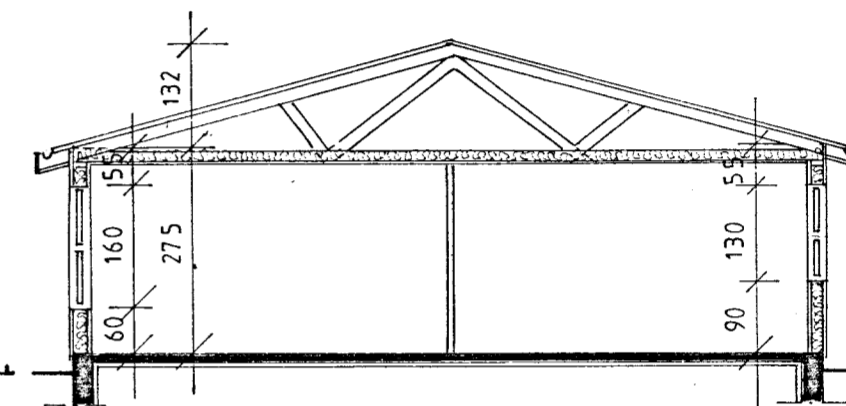
AUSTUR



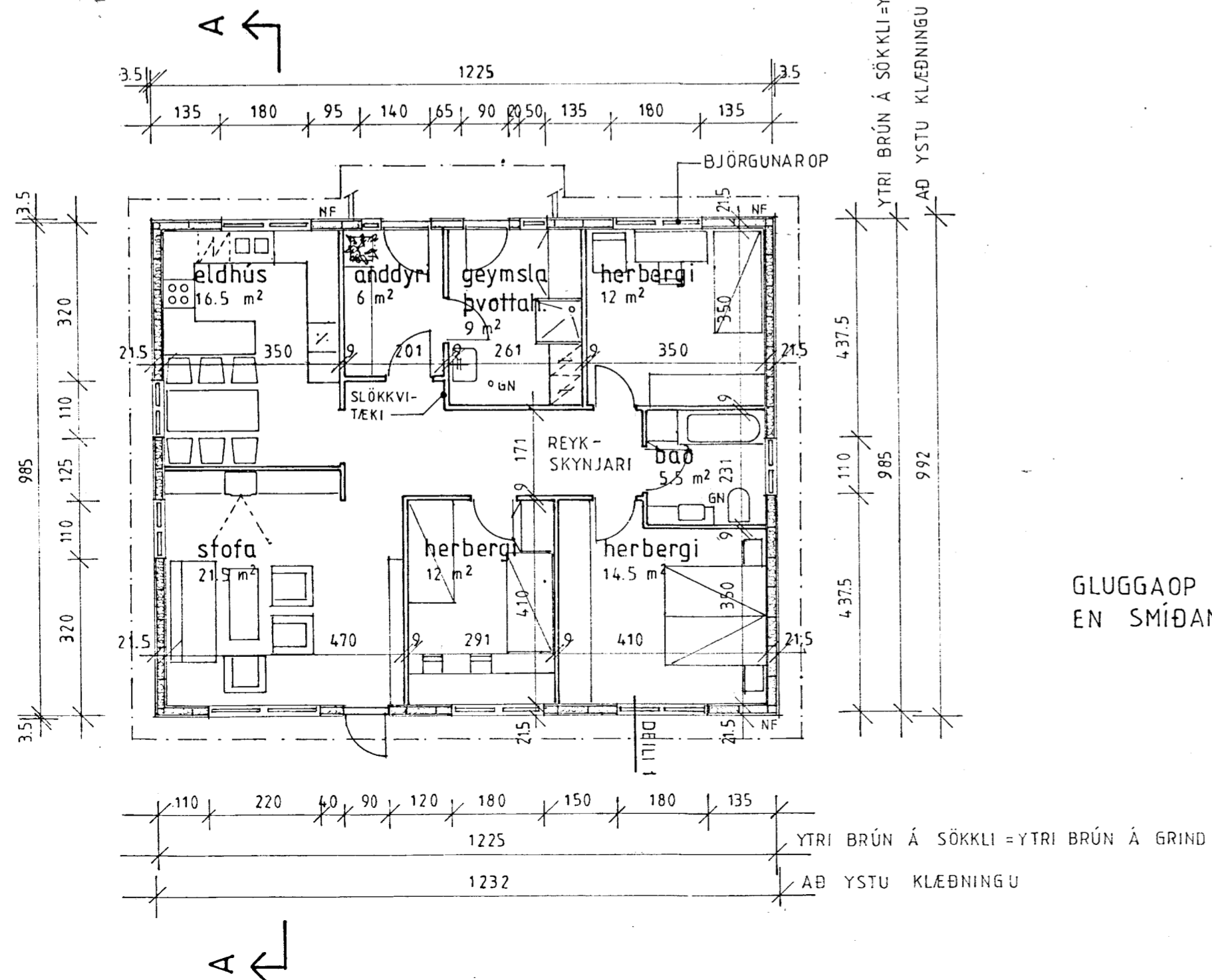
SUÐUR



VESTUR



SNIÐ A-A



GLUGGAOP Í GRIND 2 SM STERRA  
EN SMÍÐAMÁL GLUGGA

1. BREYTING 29.7.1992 BJÖRGUNAROP, SLÖKKVI-TÆKI O.F.L.

STADUR		ÁRNESSÝSLU	
EYVÍK, GRÍMSNESHREPPI,		VERK NR.	93-103
HEITI		TEIKN. NR.	A 1
ÍBÚÐARHÚS, 122 m <sup>2</sup> OG 417 m <sup>3</sup>		MÆLIKV.	1:100
GRUNNMYND, ÚTLIT, SNIÐ		DAGS.	11.06.1993
MÁLFRÍÐUR KRISTJÁNSDÓTTIR arkitekt FAI		Málfríður Kristjánsdóttir	
HÁTUN 41 105 REYKJAVÍK SÍMI 91-22711			