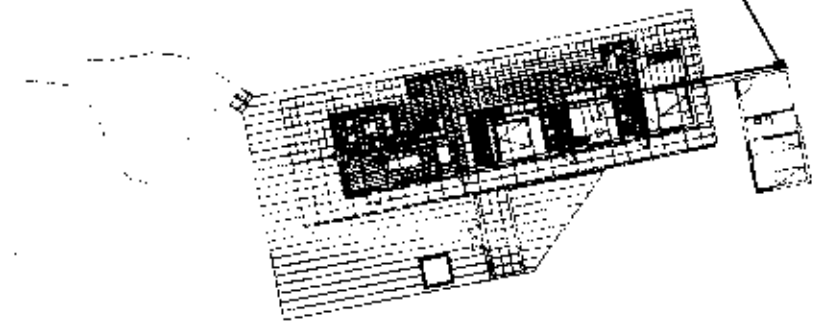
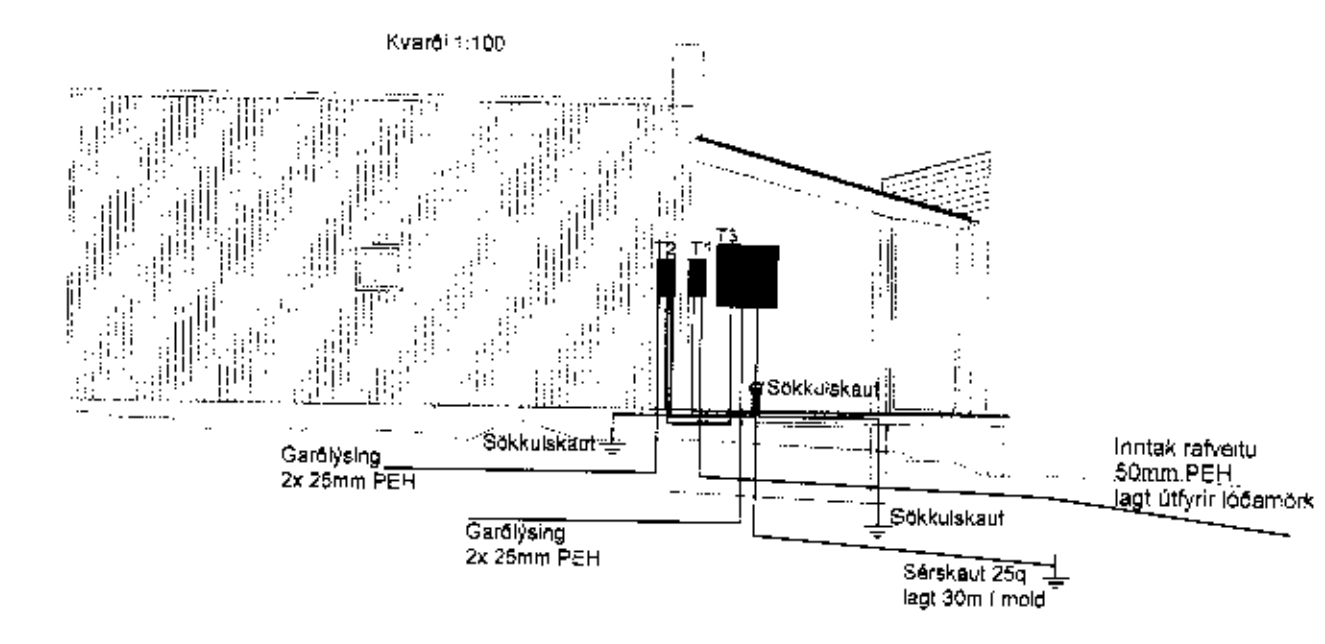
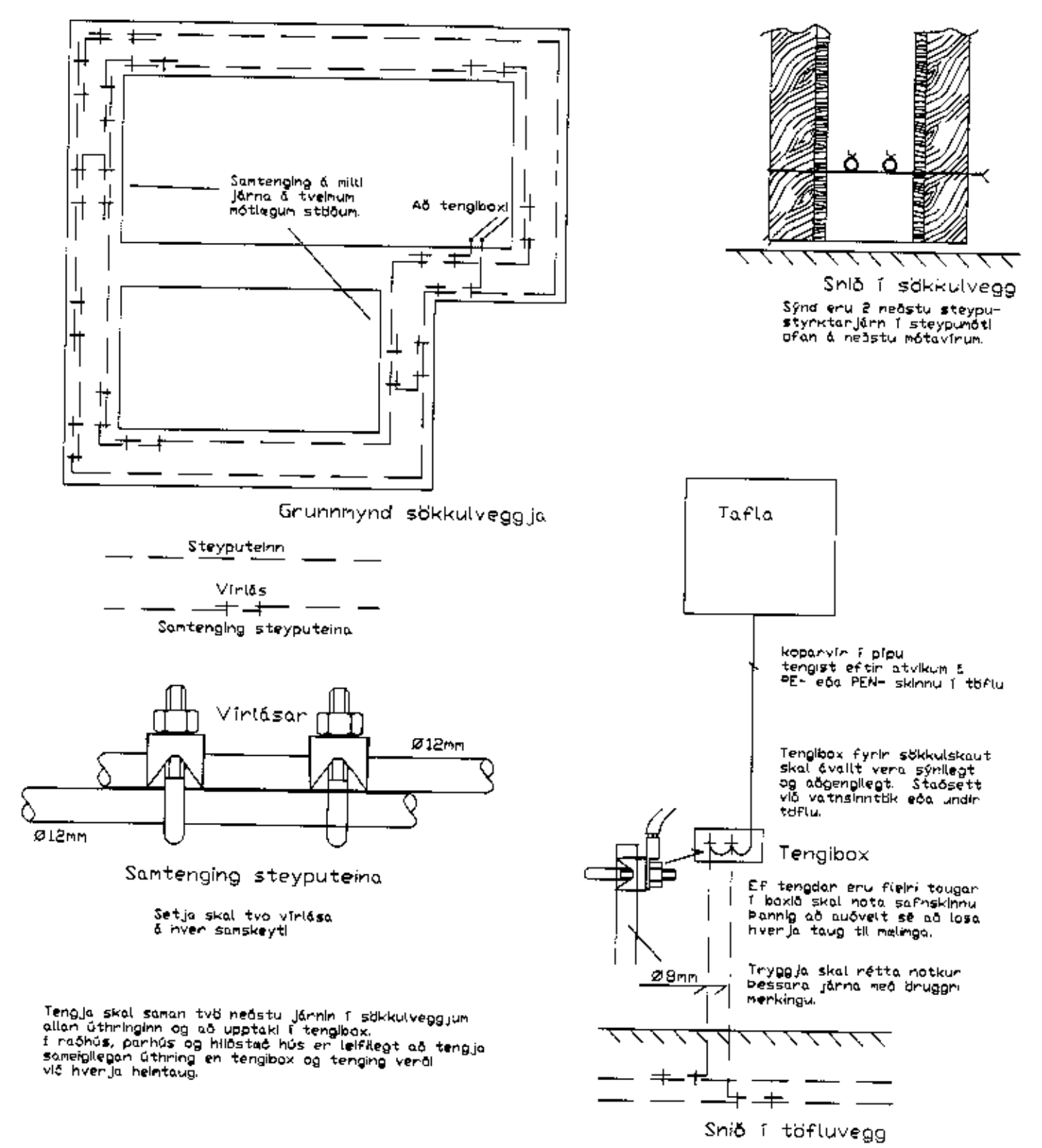


Inntak rafveitu  
50mm PEH  
lagt útfyrir lóðamörk



### Sökkulskaut



Kvarði 1:500

Breytingar	Dags	Yfirfarir
1		
2		

**E. Brynjar Einarsson, löggildur raflagnahönnuður**

Verkefni	<b>Grjóthólsbraut 12</b>		
Staður	<b>Öndverðarnesi</b>		
Skýring	<b>Afstaða, skurður, sökkulskaut, töflur</b>		
Verknúmer	Teiknað	BÓG	
Hönnun	EBE	Blað	2 af 2
Mkv	1:10 / 1:500	Dagsetning	07.10.2011
<b>ktl. 261063-6389</b>	<b>gsm: 846-3387</b>		
<b>netfang: e.brynjar.einarsson@gmail.com</b>			