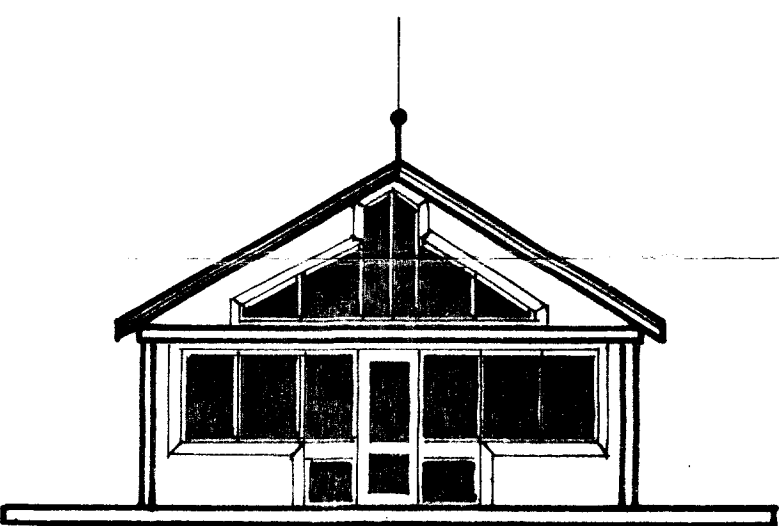
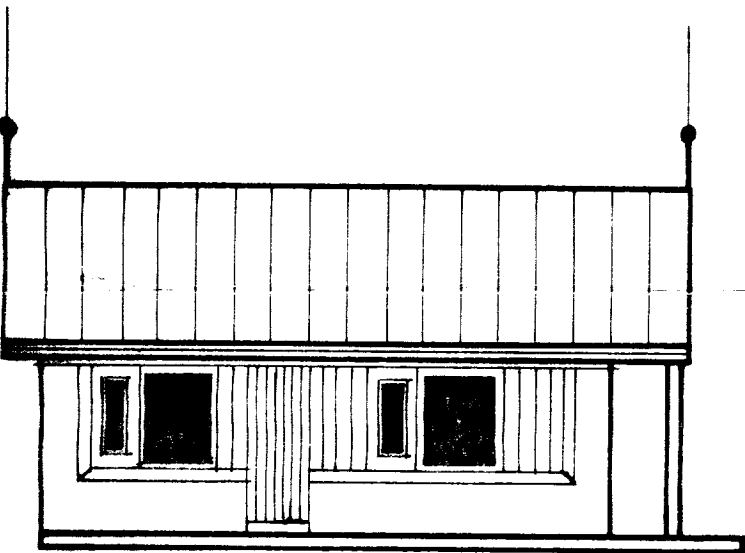
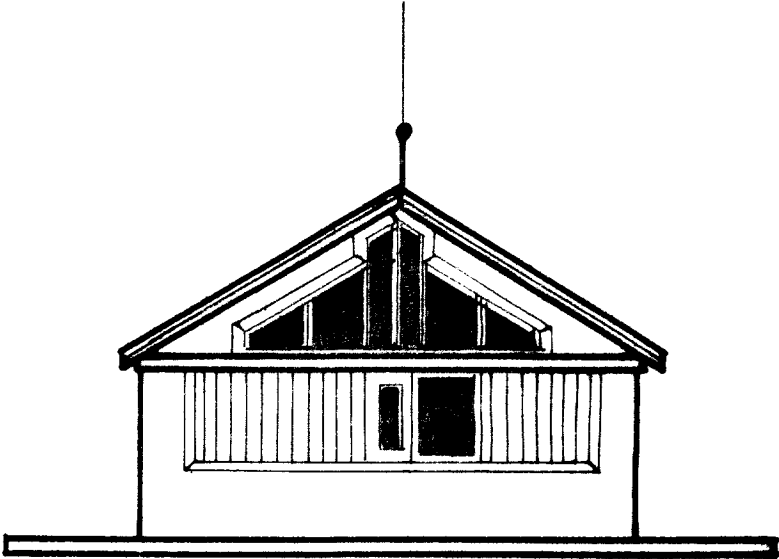
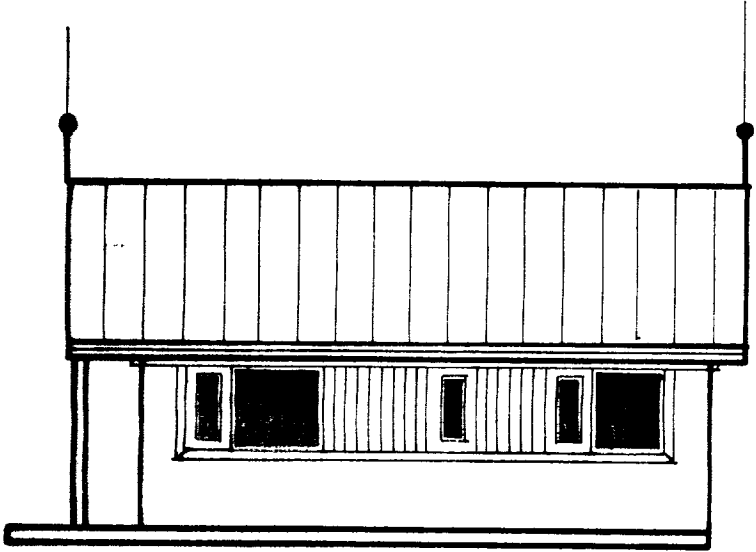


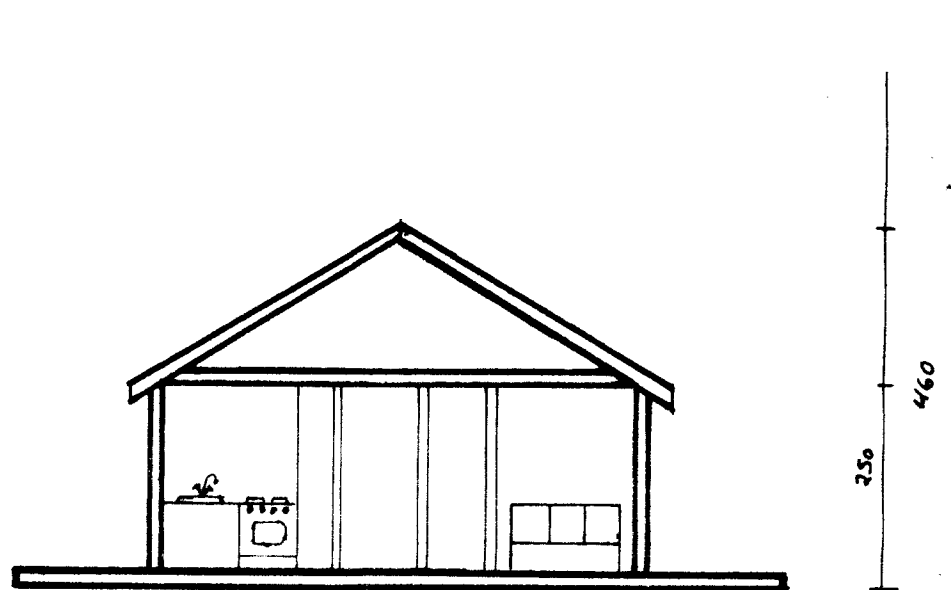
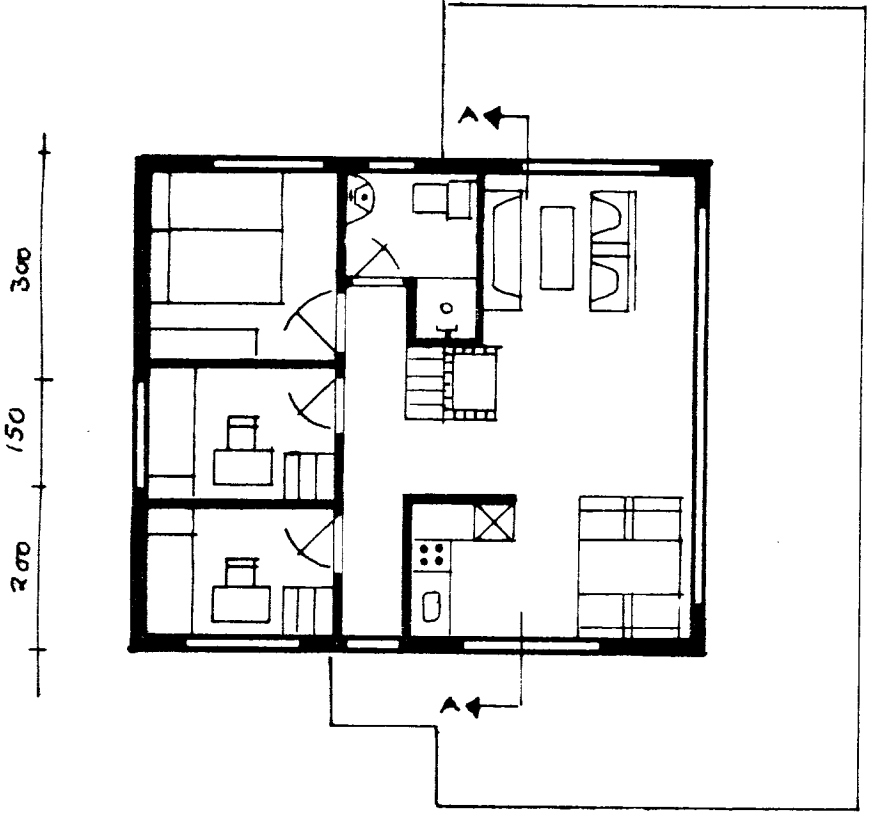
 Gunnar Póllur

 Hönnuð

 Hólmur Einarsson



60 150 50 60 90 180 60



Skurður AA

60 150 70 90 70 180 130

Sumarkúp 48, m ²
Hestur Gimnesi
Hannað: 15/1 1983
Gunnar Einarsson/FIFI
Grunnmynd, áttit og sneiðing
Mkv 1:100