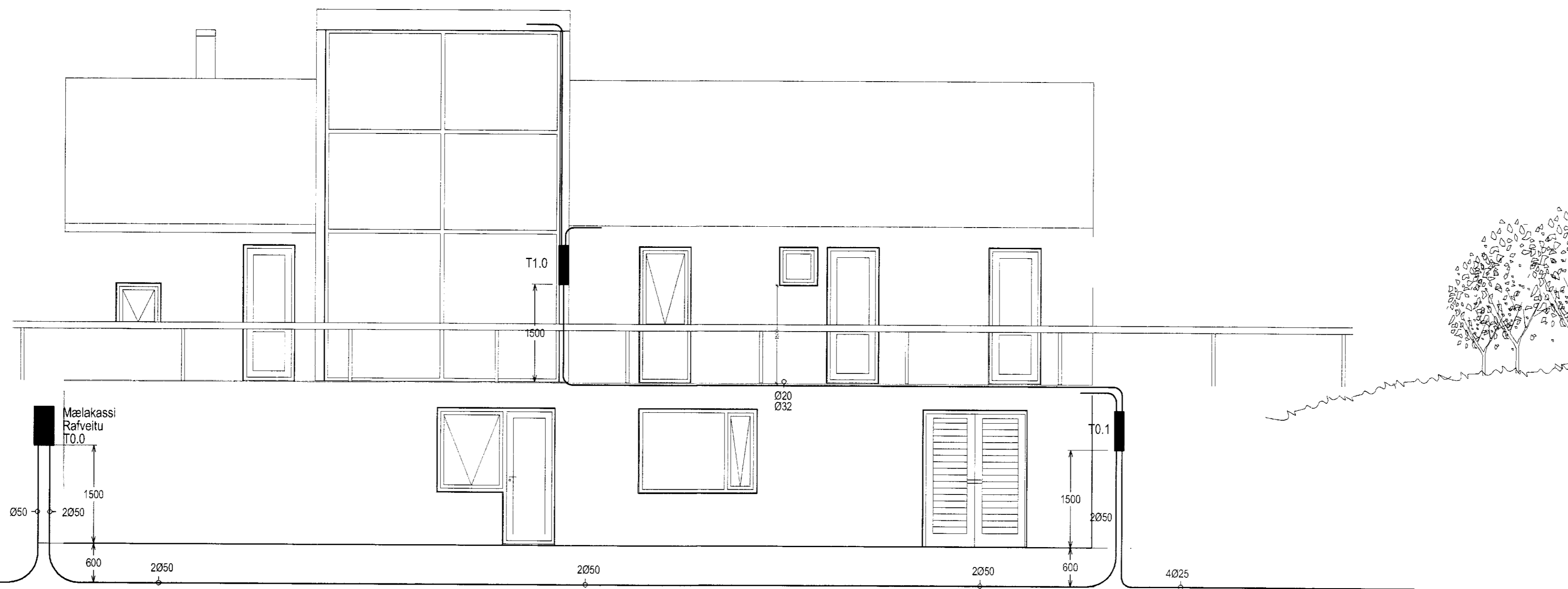
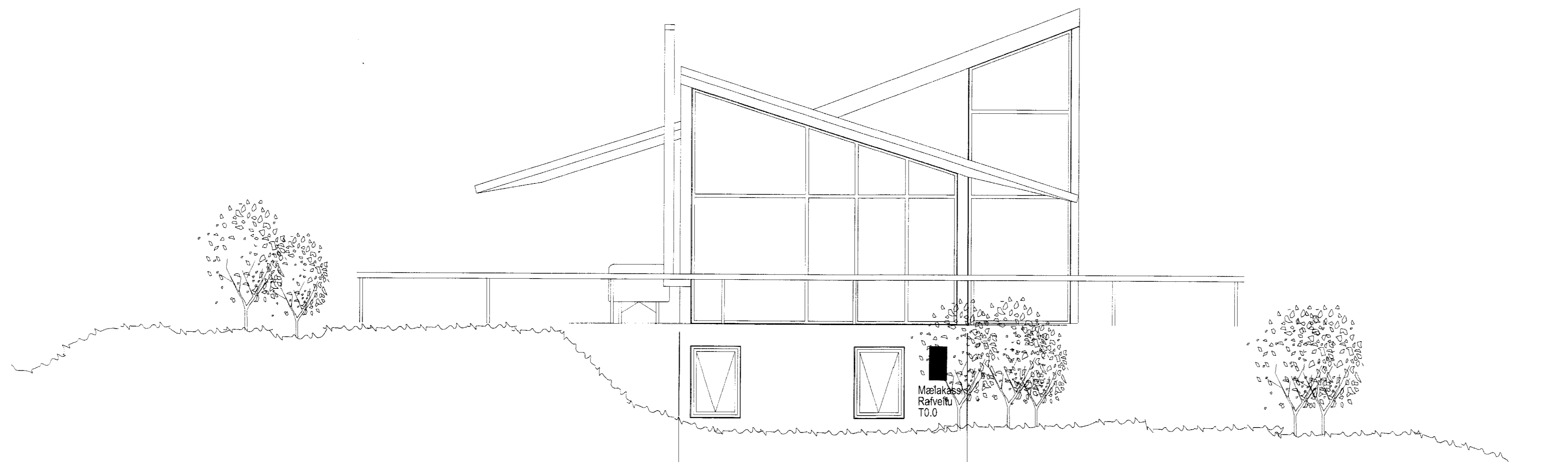
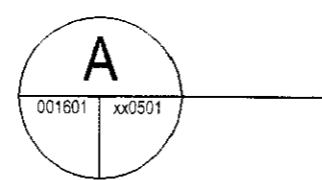


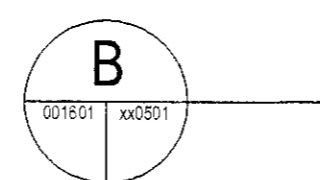
Ílagil 5 Grafningi
 HEIMTAUG RAFMAGNS 3x400/230V/50A
 INNTAKSPIPA FYRIR RAFM 050
 INNTAKSRÖR NAI AÐ LÖÐAMÖRKUM



Vesturhlíð



Norðurhlíð



Hönnuður:
 Gunnar E. Sveinsson
 Yfirlit:

 Samþykkt: Davíð E. Sölvaug kt. 100356-3339

Breytingar:

Aðalhönnuður:
Árni Pappalardo

Sumarhús
 Ílagil 5 Grafningi í landi Nesja
 Grimsnes og Grafningshreppi 801 Selfoss

Sniðmynd
 Sniðmynd
 Mkv: 1:50

VERKFRÆÐISTOFA

Grensásvægur 3
 108 Reykjavík
 Sími 520 9900
 Fax 520 9901
 www.rts.is



Attek gæðvottun skv. BS EN ISO 9001:2000
 FS 88744

88-2171-1-

18.09.2007

xx0501

A

