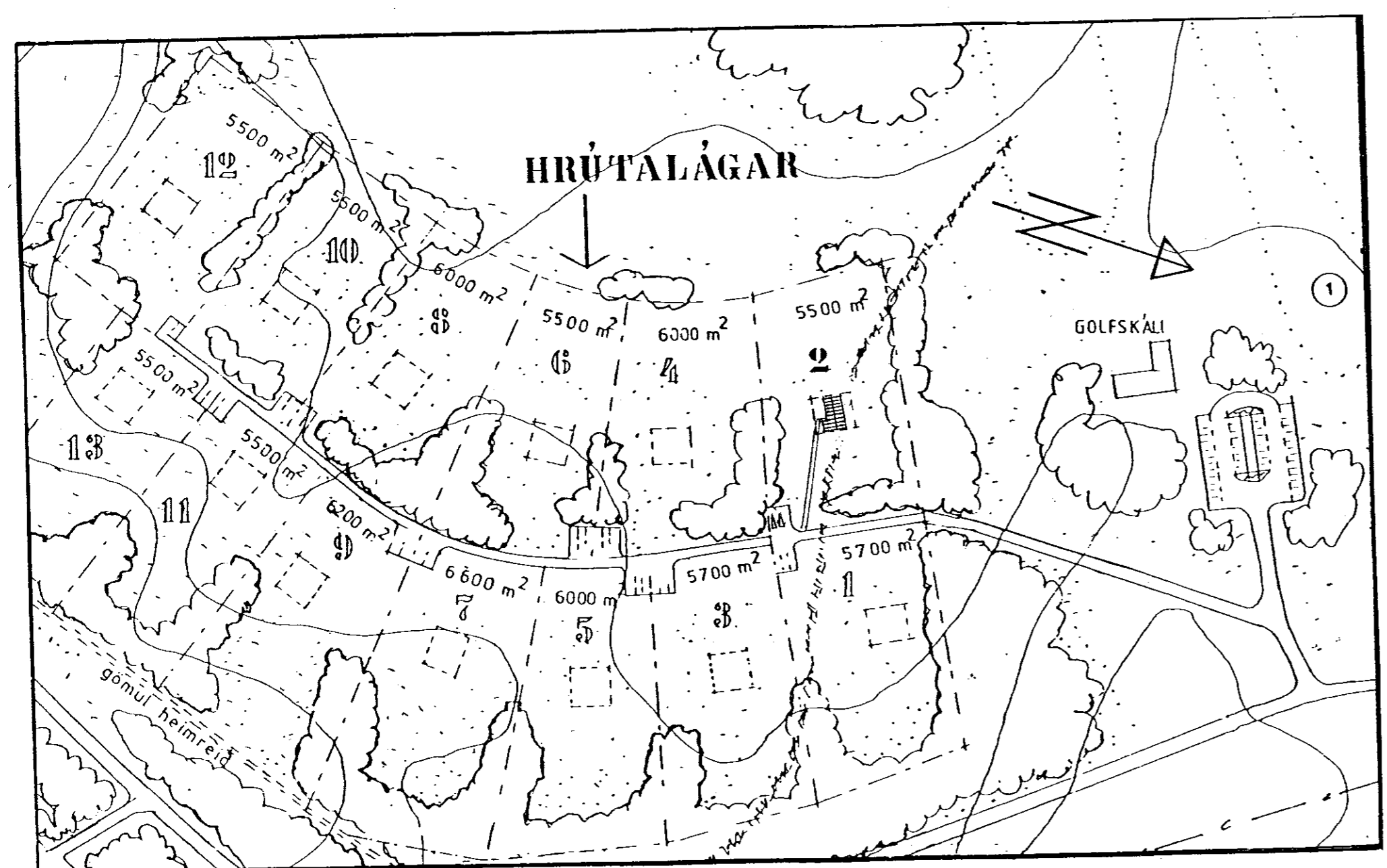
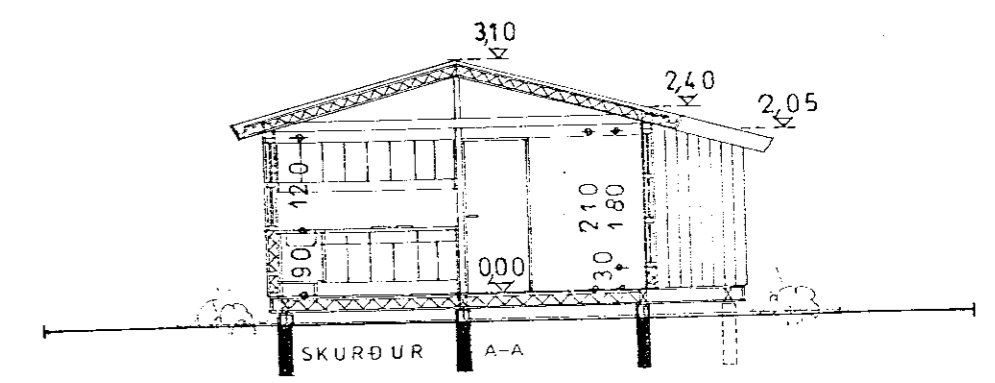
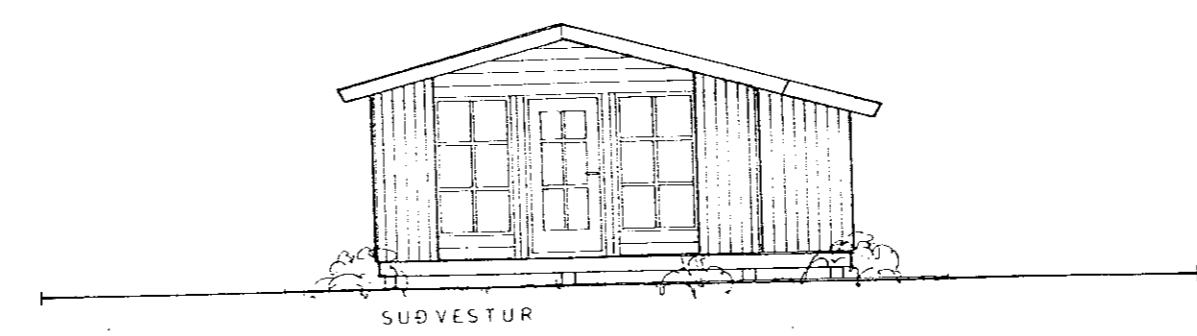
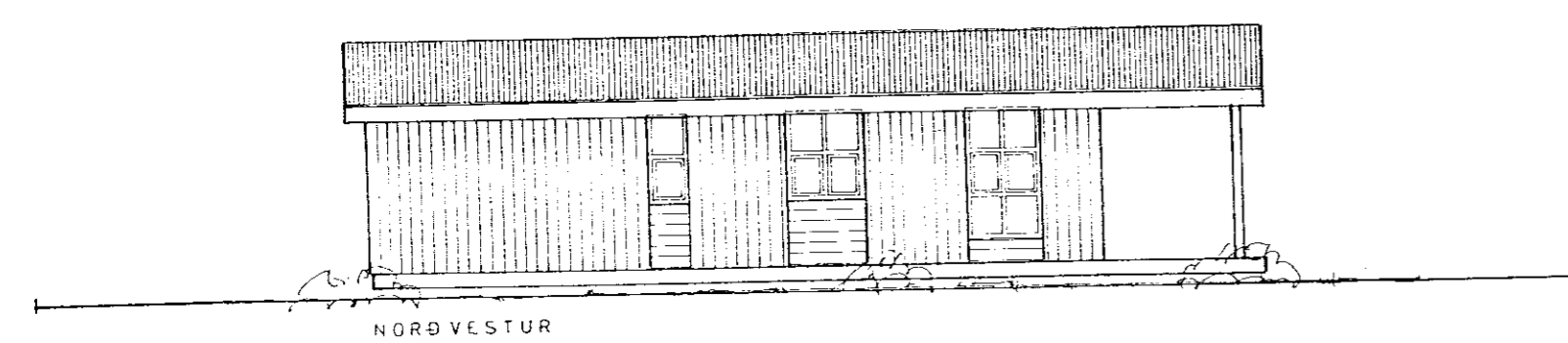
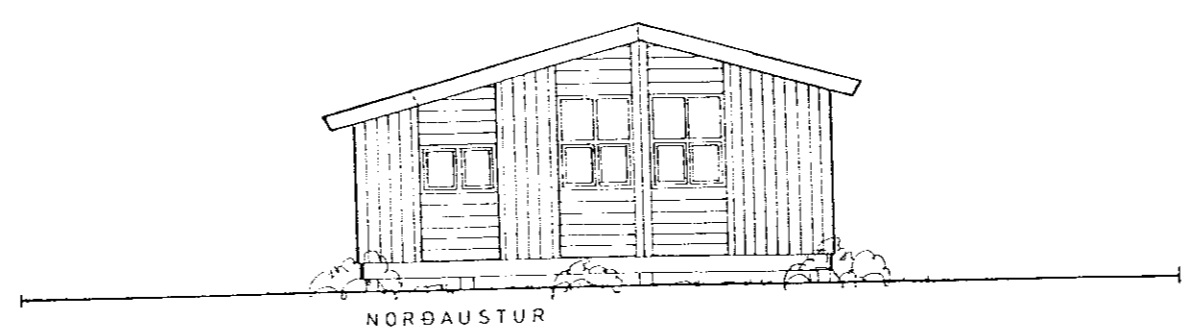
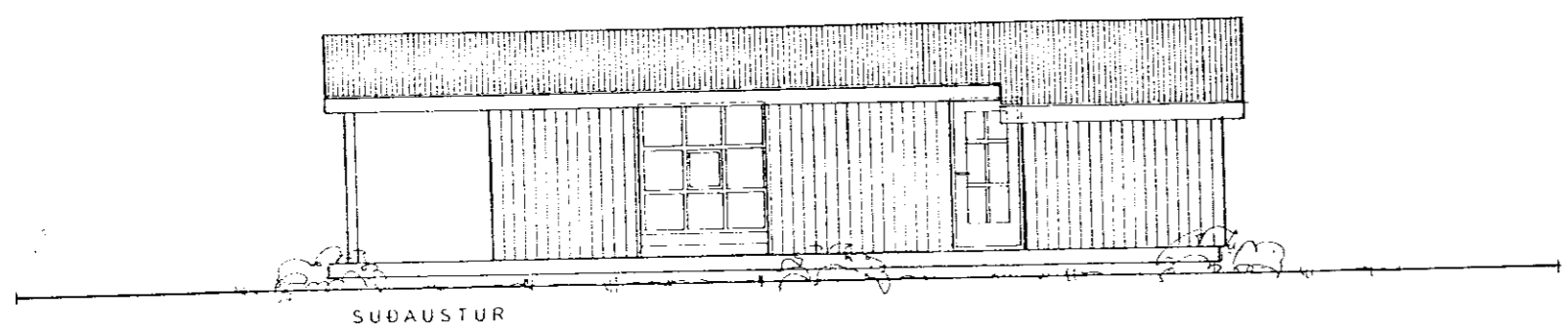
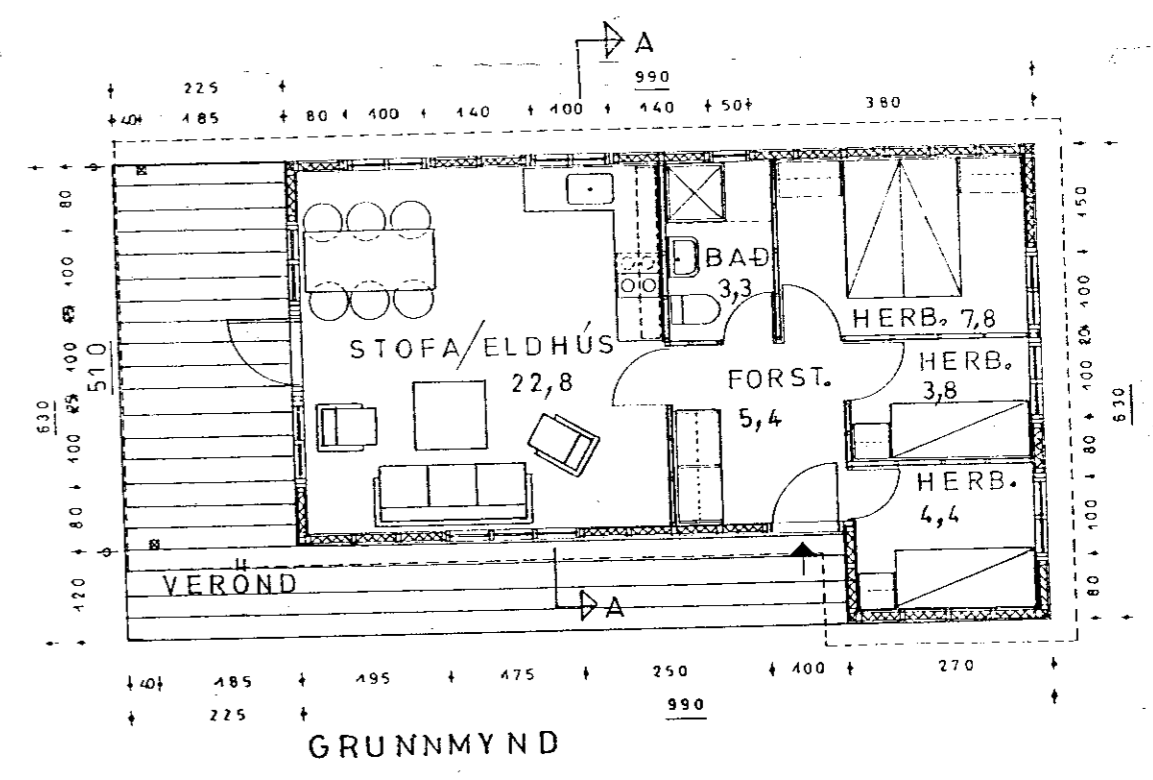


Sept. 26/1995
 Hannes Einarrson



AFSTÖÐUMYND, M. 1:2000



STÆRÐ HÚSS;
 53,7 M² 146,1 M³

HRÚTALÁGAR 2

STÓRA HOFI, GNÚPVERJARR.

GRUNNMYND, ÚTLIT, SKURÐUR, AFSTÖÐUMYND, M. 1:100, 1:2000
 SVERRIR NORÐFJÖRÐ ARKÍTEKT F.A.I. S.5527320, SEPT. '95
 Sverrir Hafþjörn