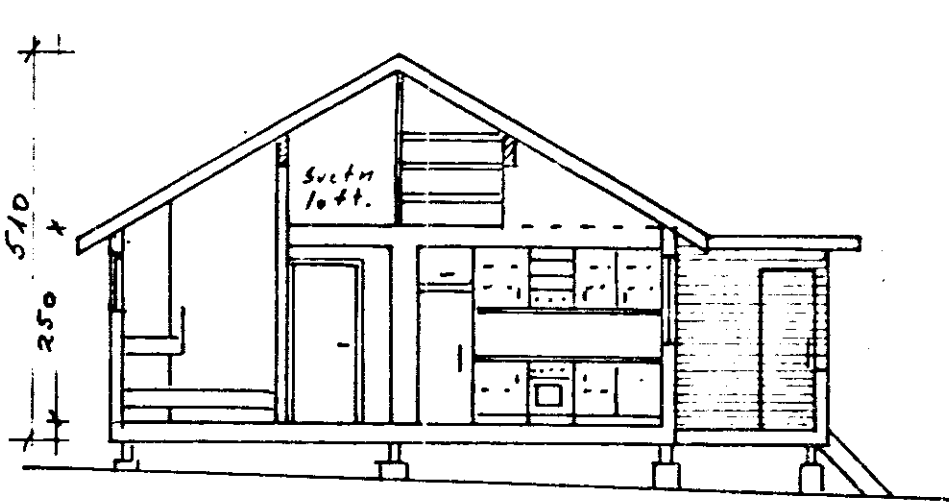
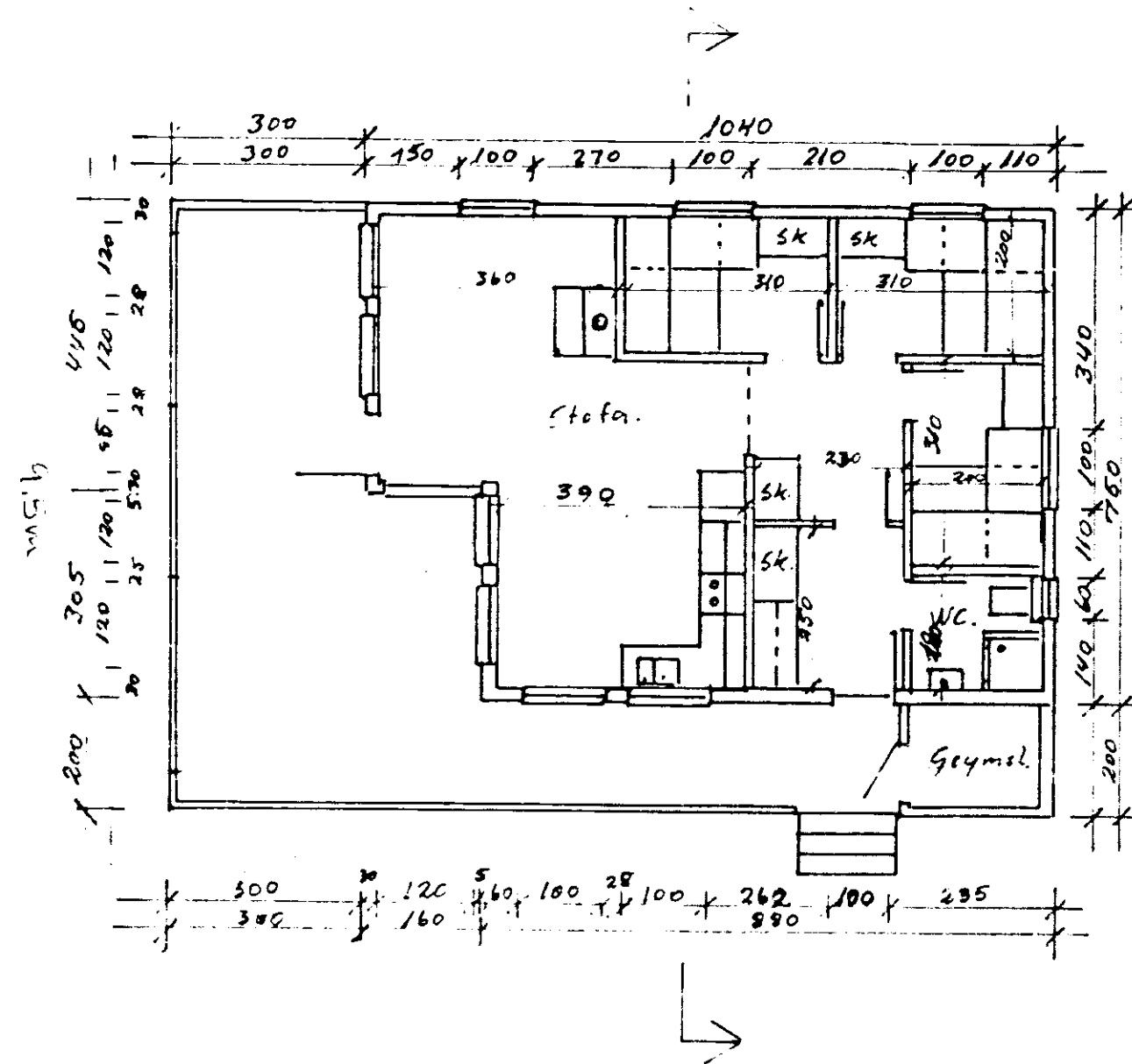
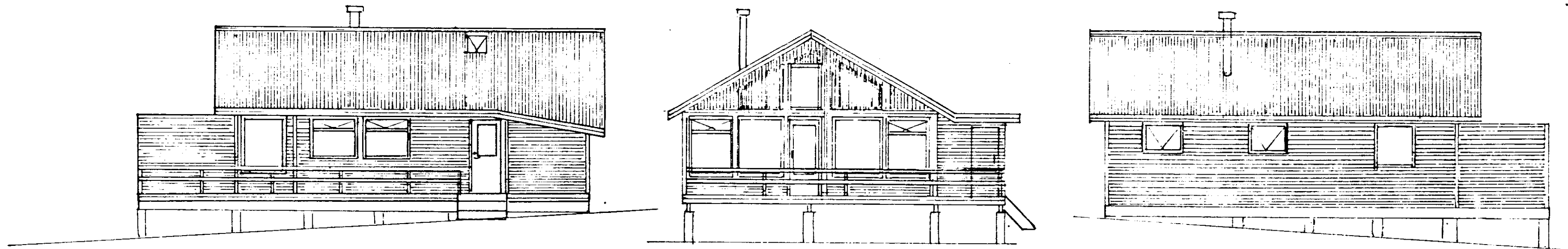


Samp. 18/5 1999
 Hannes Þorvaldsson



Skurður.

Flatarmál	73.12 m ²	Rúmmál	291.6 m ³
Geymsla	4.40 m ²	Geymsla	11.0 m ³
Samtals	77.52 m ²	Samtals	302.6 m ³

Sumar hús. Miðhusum Grúp.

M 1:50 Þ.M.