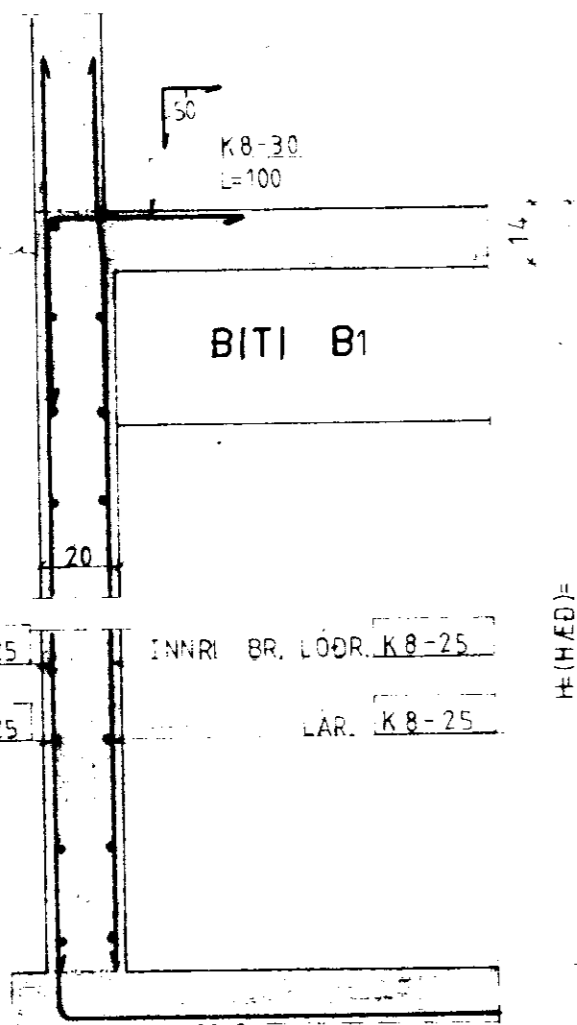
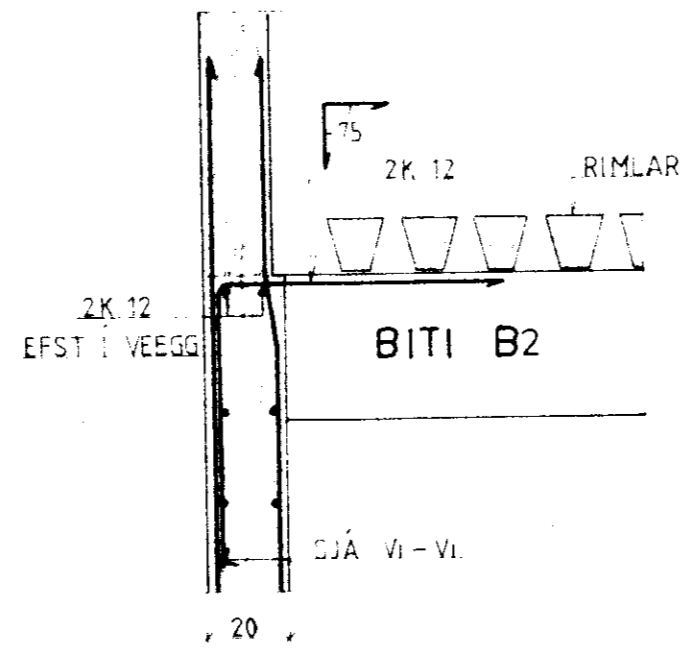


HLIÐARVEGGIR

SNIÐ V₁-V₁
M=1:20

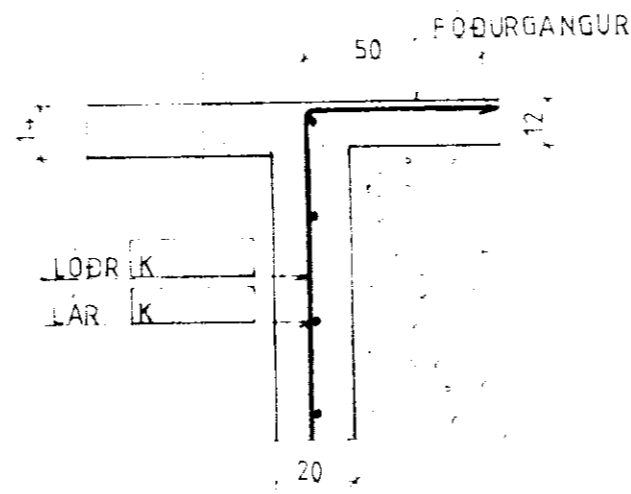


SNIÐ V₂-V₂
M=1:20

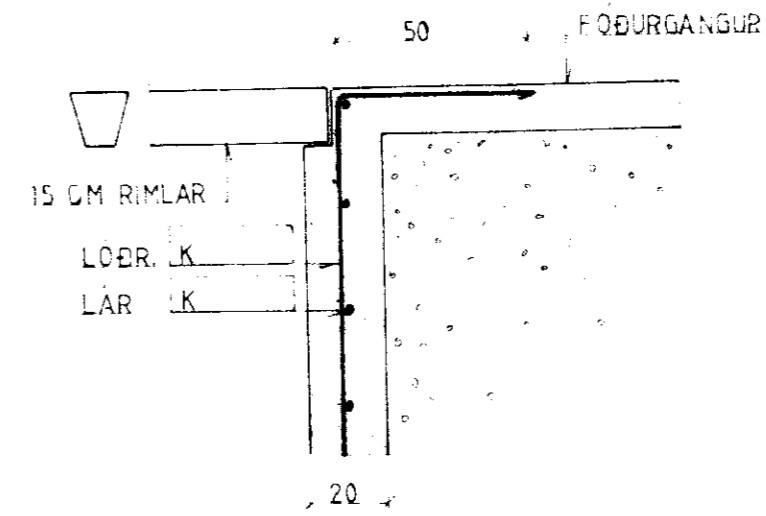


GAFI NÆST HLÖÐU

SNIÐ V₃-V₃
M=1:20

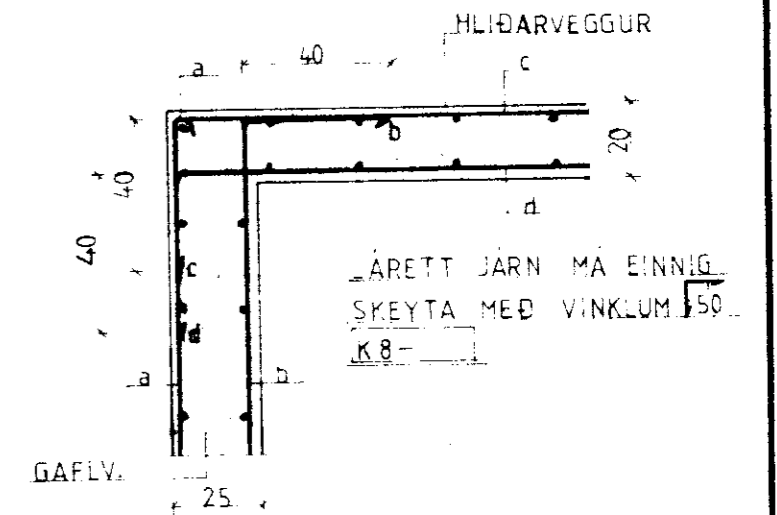


SNIÐ V₅¹-V₅¹
M=1:20



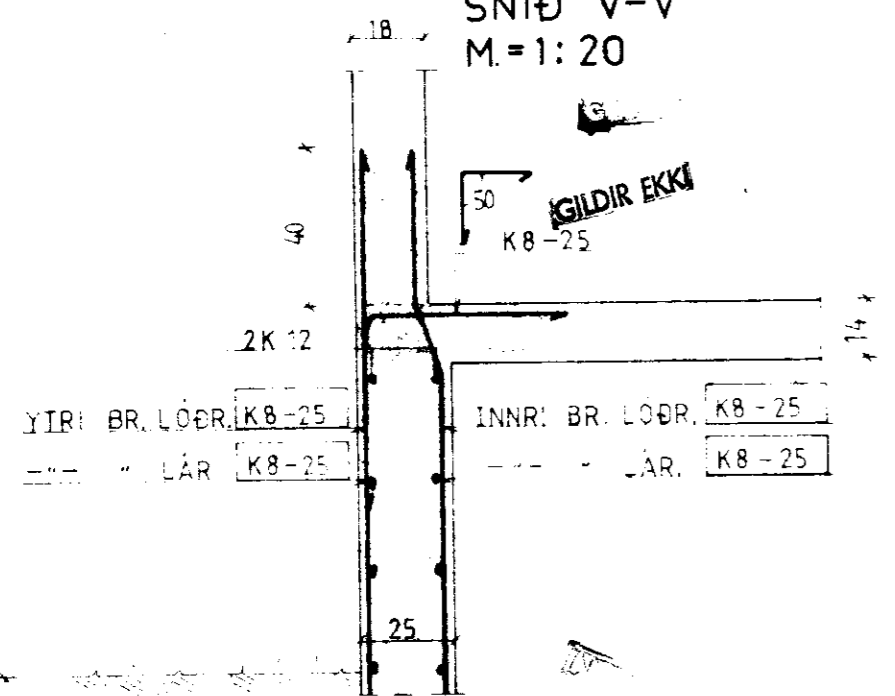
HORN

LÁRÉTT SNIÐ
M=1:20

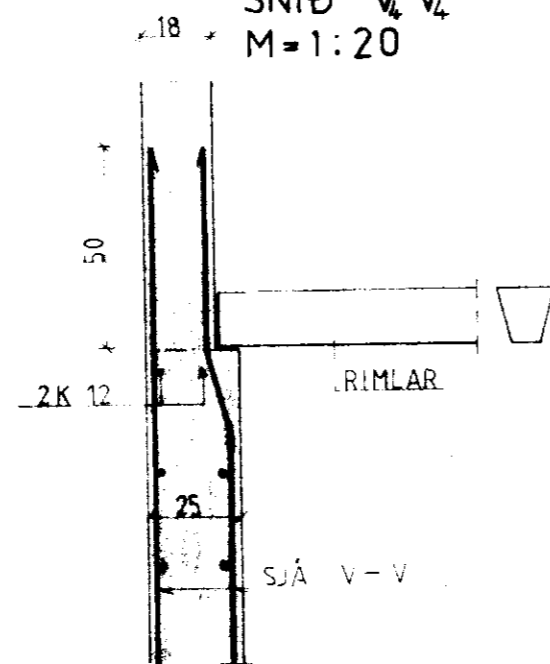


GAFLEGGUR

SNIÐ V-V
M=1:20



SNIÐ V₄-V₄
M=1:20



STEINSTEYPA S=200 (BLONDUN 1:3,5 - 1:4)

- STEYPUÞYKKT UTAN JARNA :
- PLÖTUR OG VEGGIR 20-25 mm
- BITAR 30 ---
- STÖÐIR 50 ---

BL10-4550 REYKJAHLIÐ, SKEIÐAHR., ÁRN.			
BL BYGGINGASTOFNUN LANDBÚNAÐARINS (S.25444)			
HAUGHÚSVEGGIR JARÐF. AÐ ÖLLUM VEGGI.	Mætkv.	Reikn.	
	1:20	Teikn.	
		Samb.	
Reykjavík, 04.83		Vorkafni nr.	
<i>Sig. Sigurdsson</i>		3	
		Breytingar	