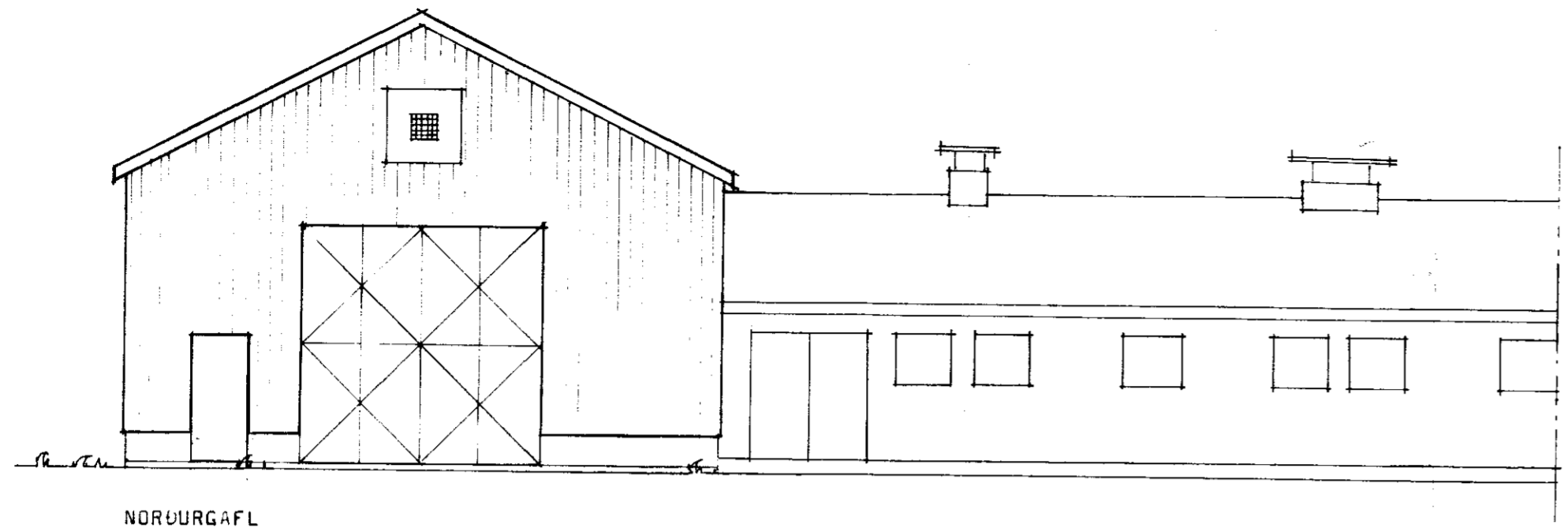
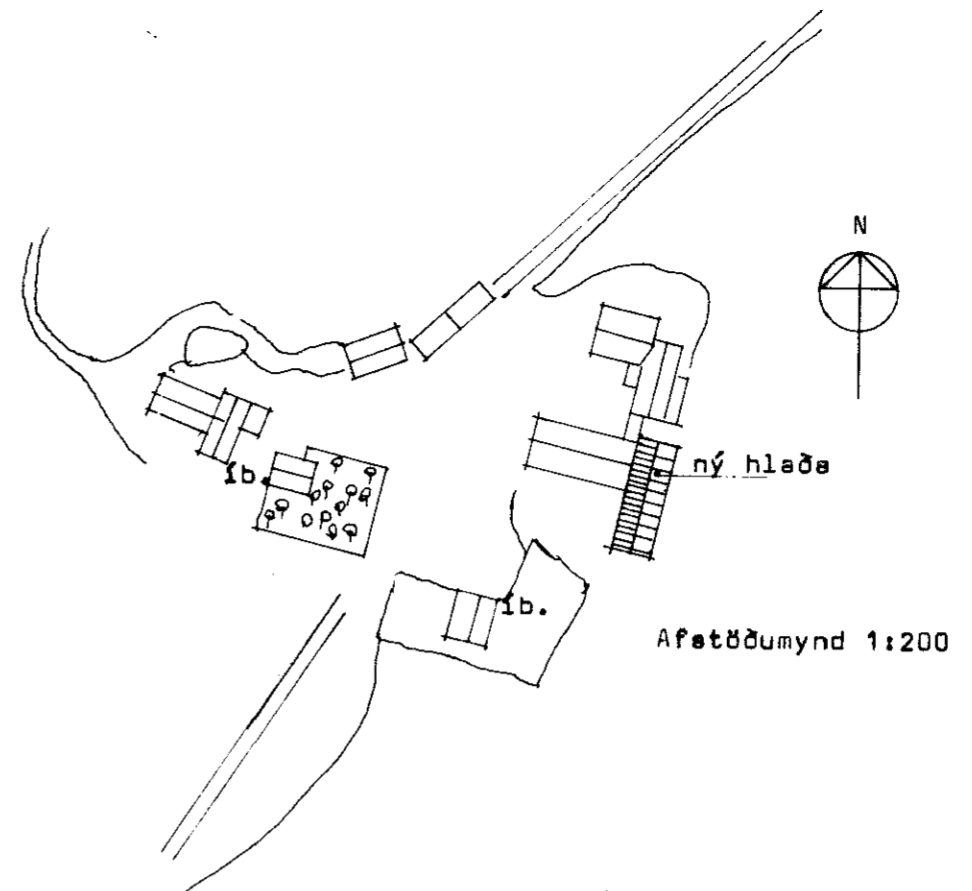


BYGGINGARFULLTÖL
 Samþ. 30/89
 16. 89
 GRÚPVERJAHREPPS

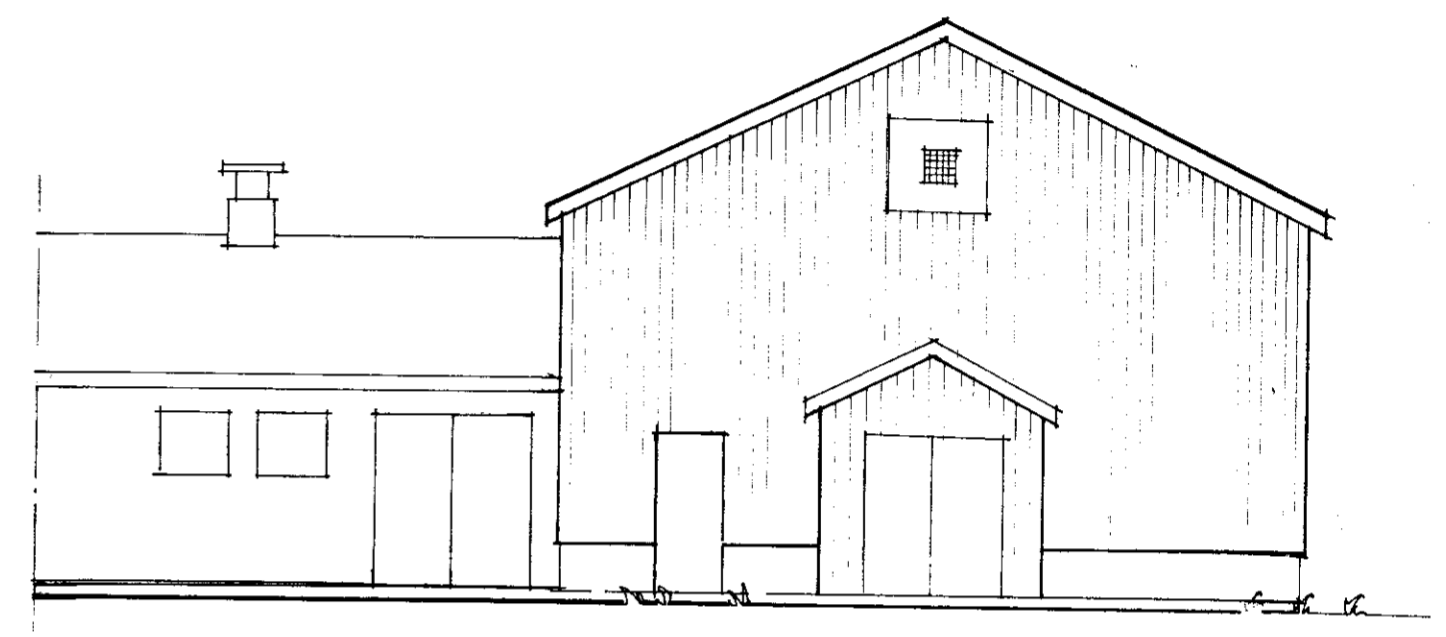
Hanna Kristiansdóttir



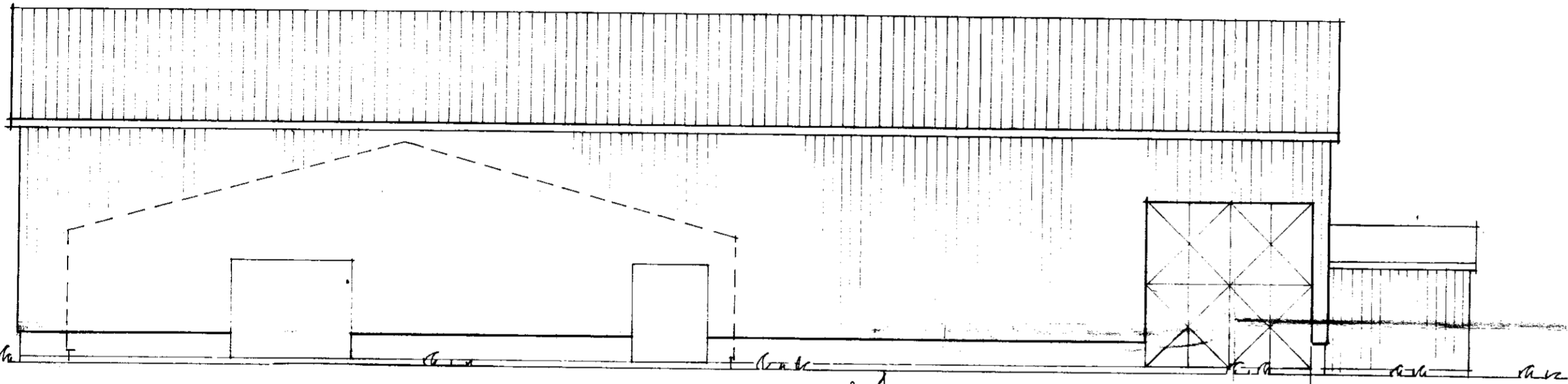
NORÐURGAFL



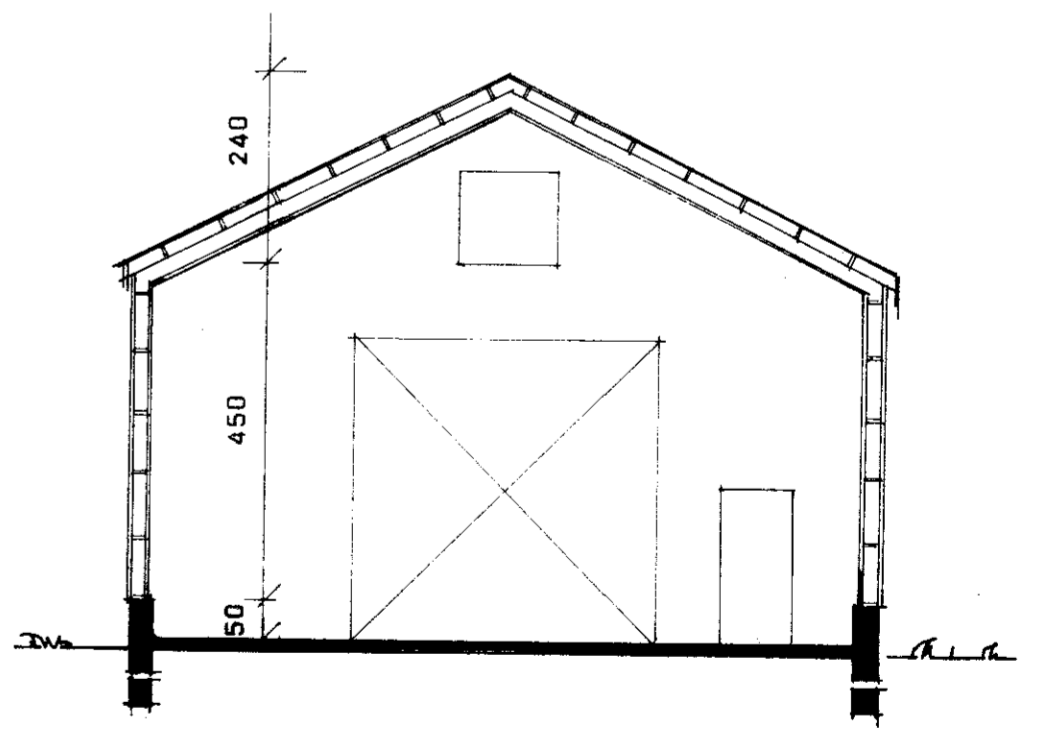
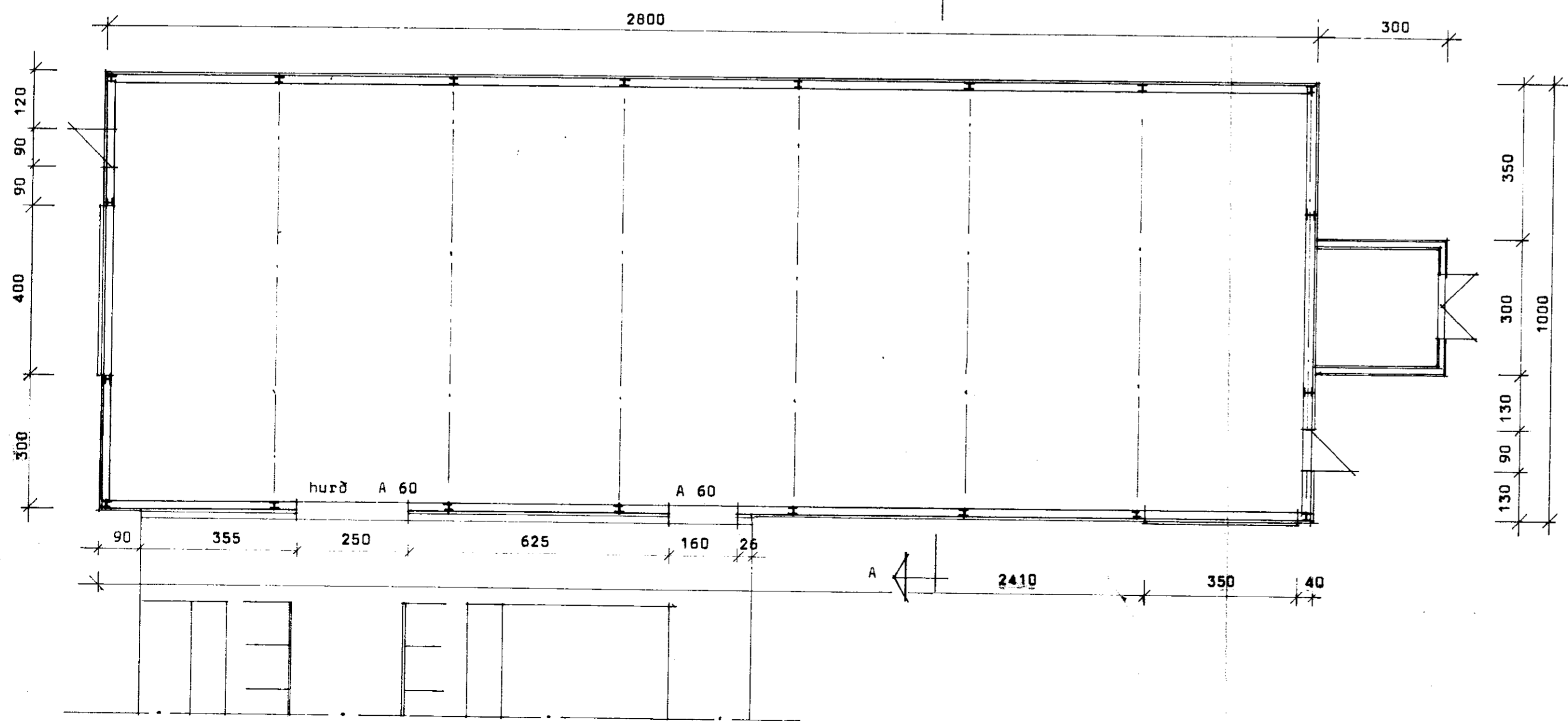
Afstæðimynd 1:200



SUÐURGAFL



HLIÐARMYND - vestur.



SNIÐ A - A

BL BYGGINGASTOFNUN LANDBÚNAÐARINS
 LAUGAVEGI 120, REYKJAVÍK, SÍMI 25444
 STEINSHOLT, I, Grúpverjahreppi, Árn.,
 Þúrrhøysahløða, stélgjörnd,
 Grunnmynd, útlit og snið.
 Stærðir: 2800^m, 1736^m, stebbi:1400^m

TEIKN NR. 30-5504
 BLAÐ NR. A 1
 MÆLIKVARDI 1:100
 DAGSETNING 19.1.89
 HANNAÐ Þórunn

Mallinn Kristjánsson