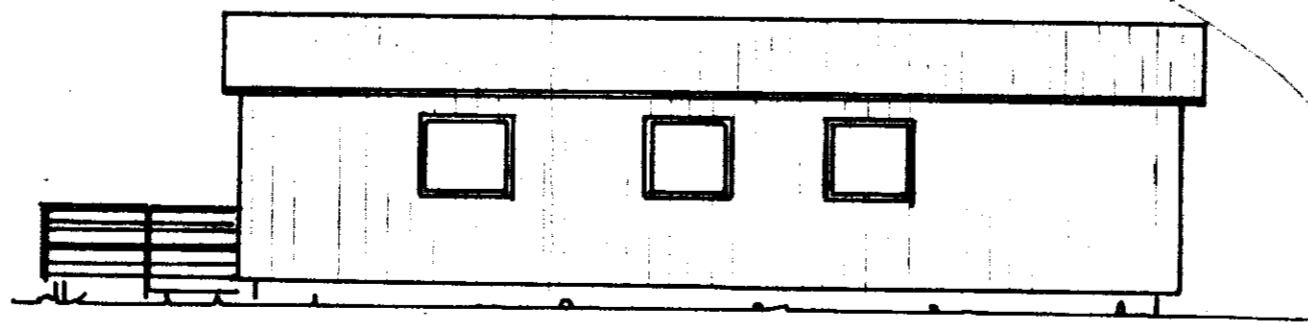
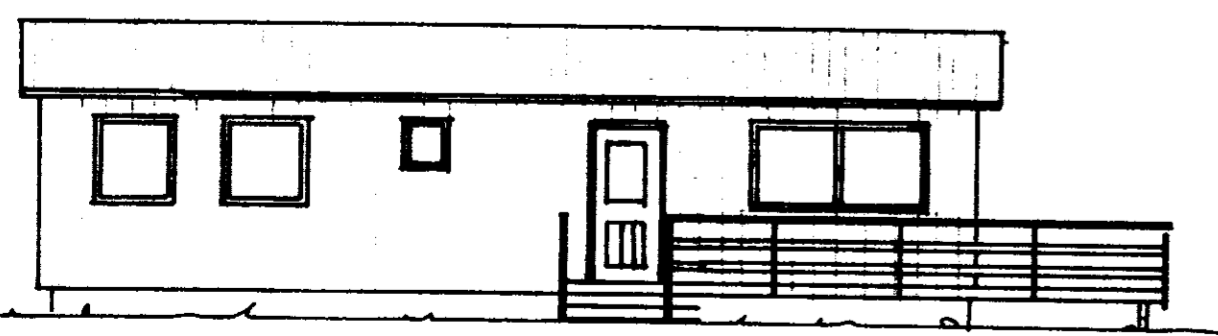
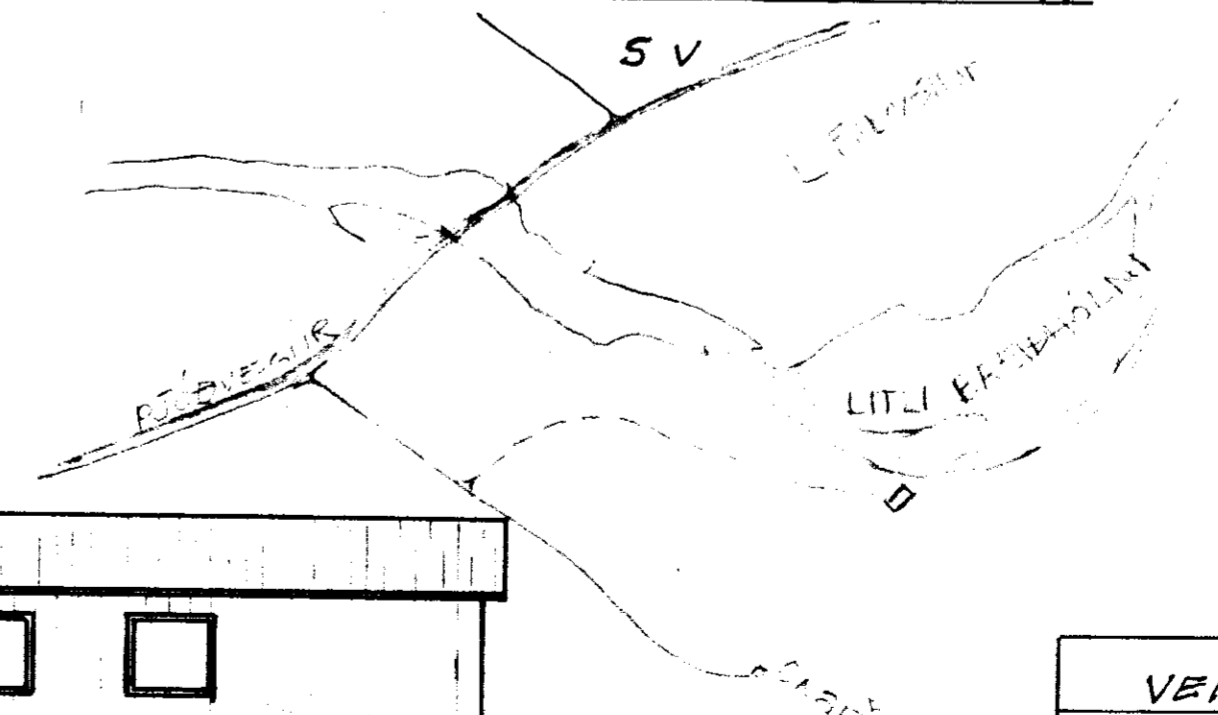
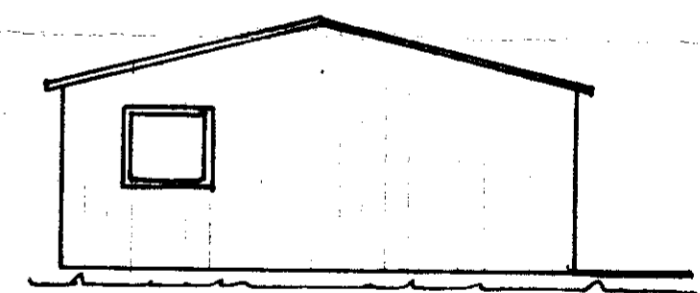
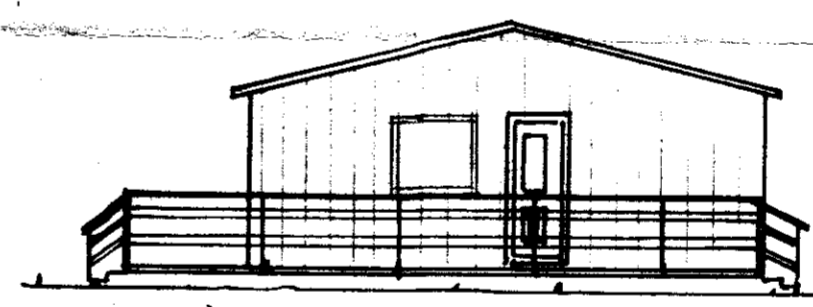
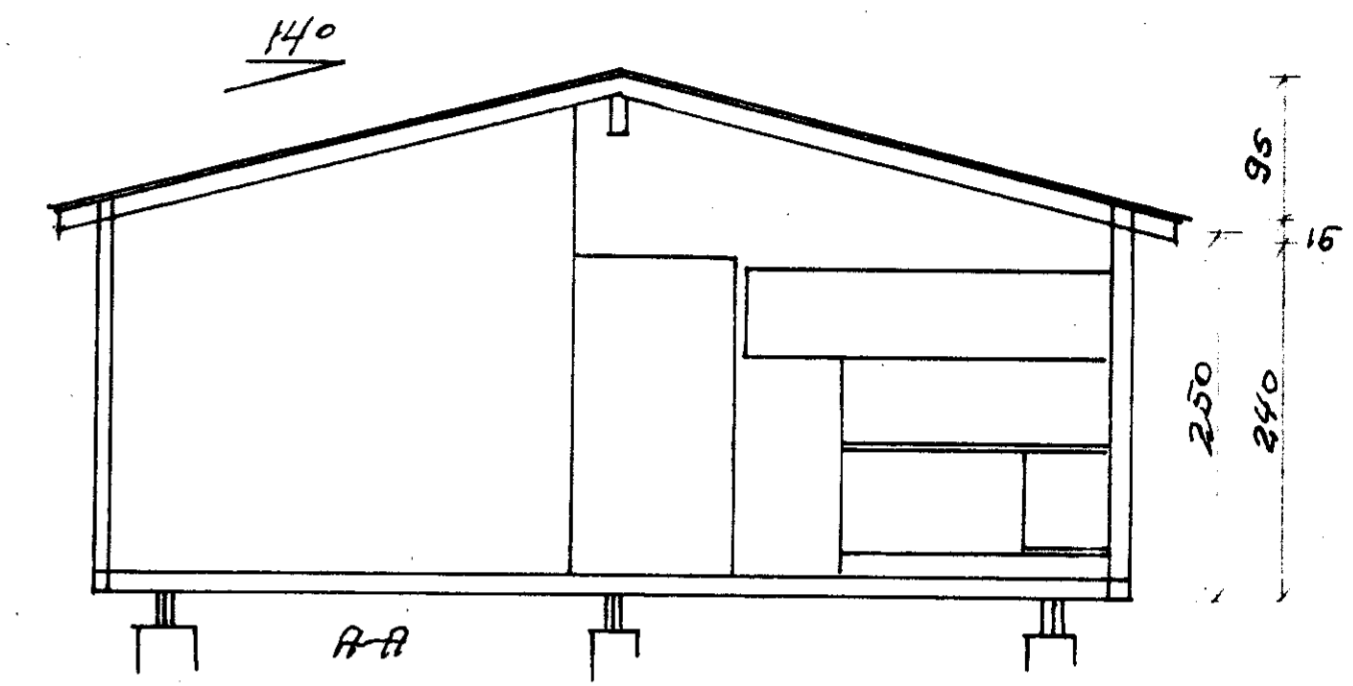
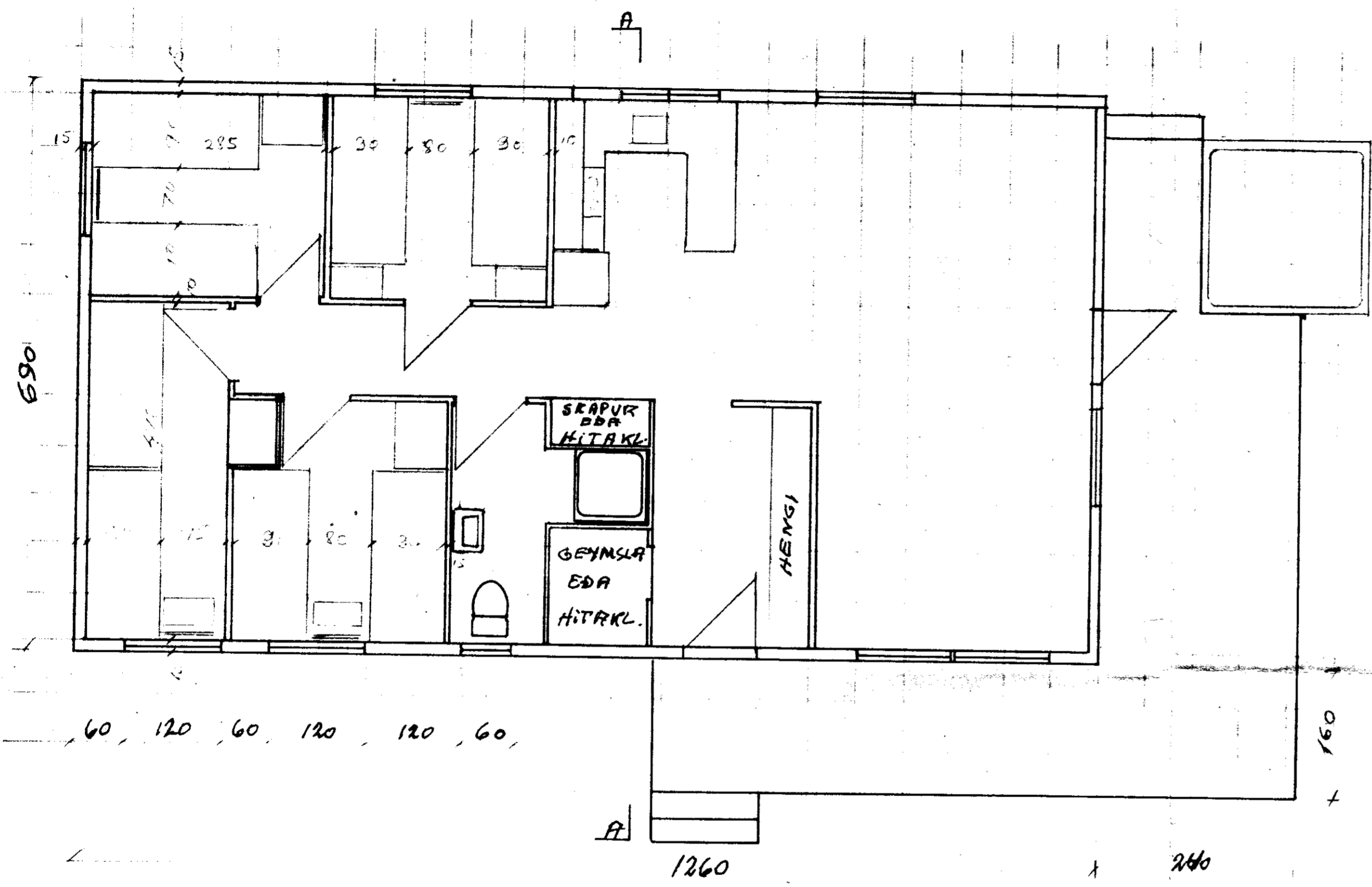


BYGGINGARFULLTÖI
Samp. 23/6'87
GNÚPVERJAHREPPS

Hanna Ólafsson



| | |
|-------------------------|----------------|
| VEIBIHÚS VIÐ STORU LAXA | |
| GRUNNMYND ÚTLIT OG SNIÐ | Kv. 1:50 1:100 |
| Febr. '87 | |
| Guðmundur Magnússon | |