

①

Hækkun á aðalhúsi:

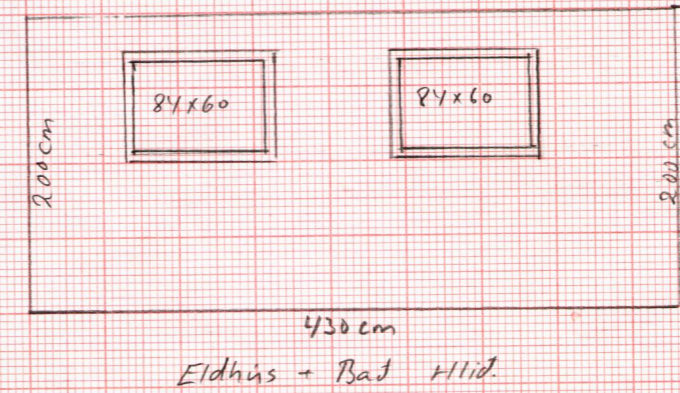
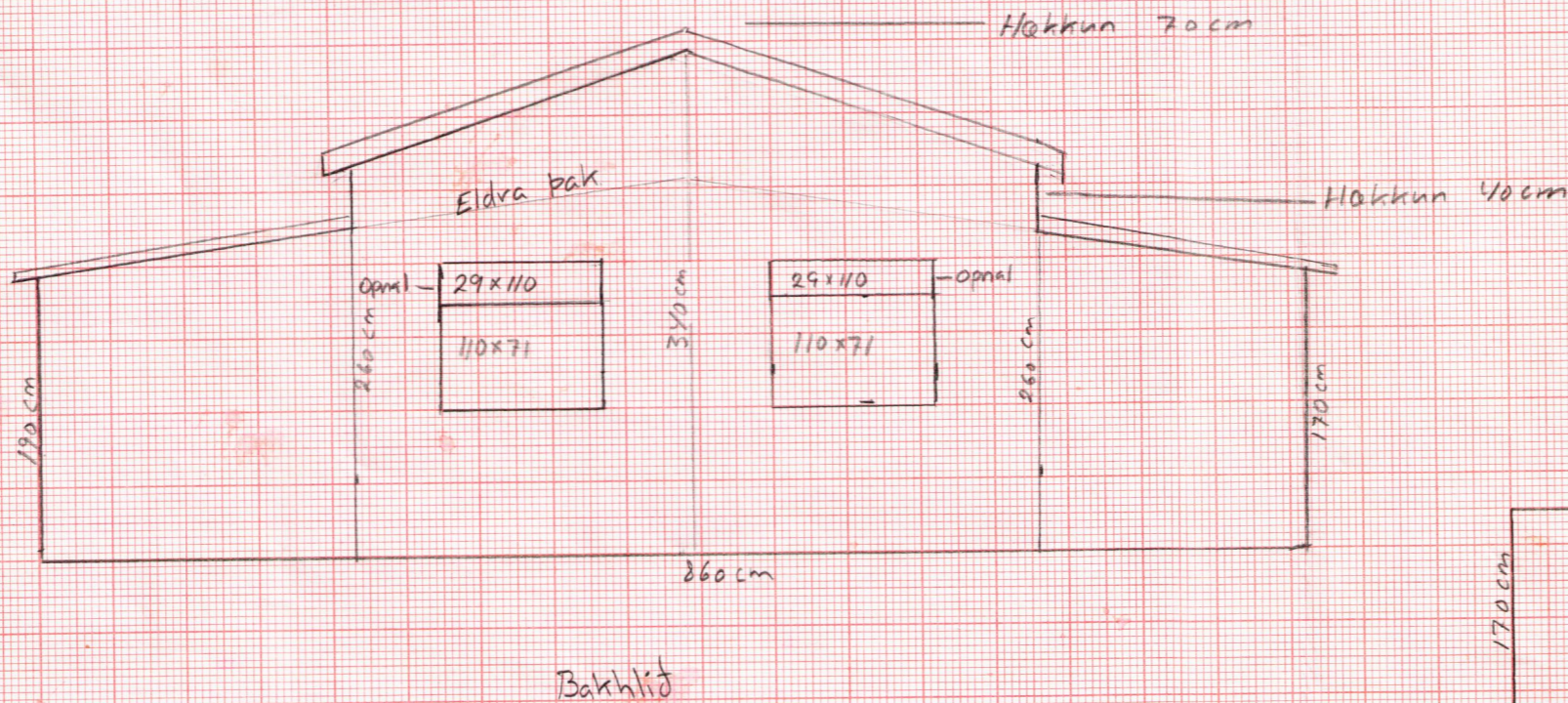
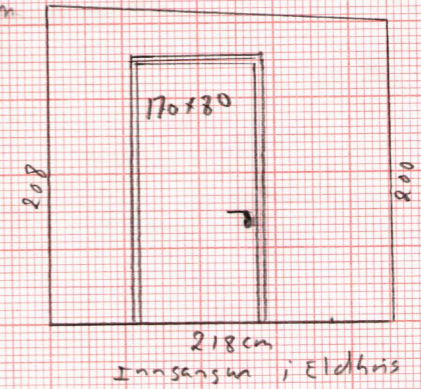
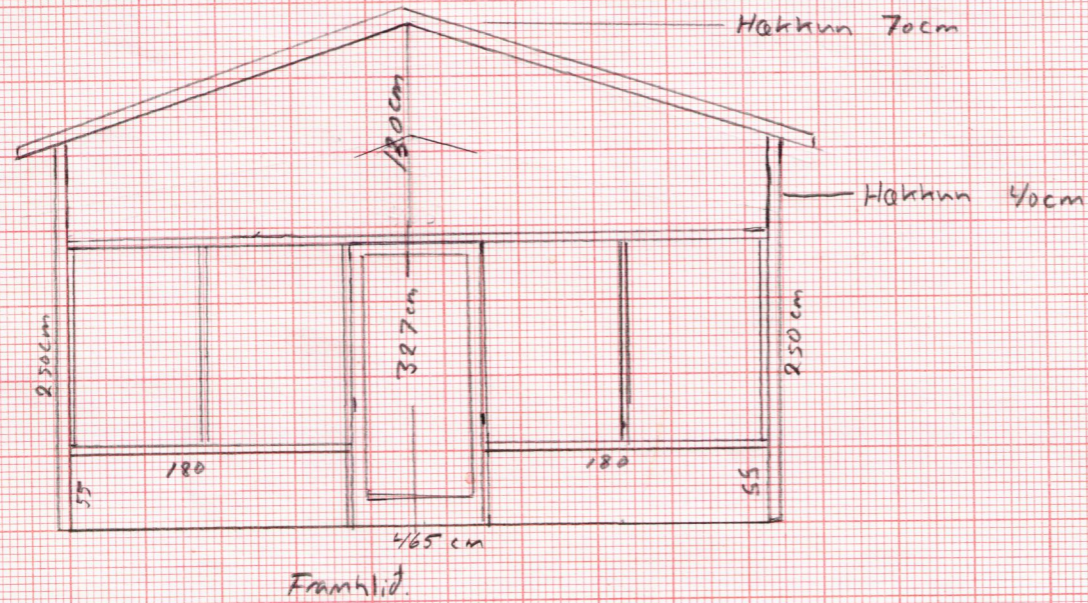
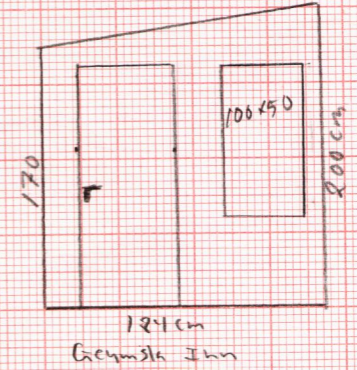
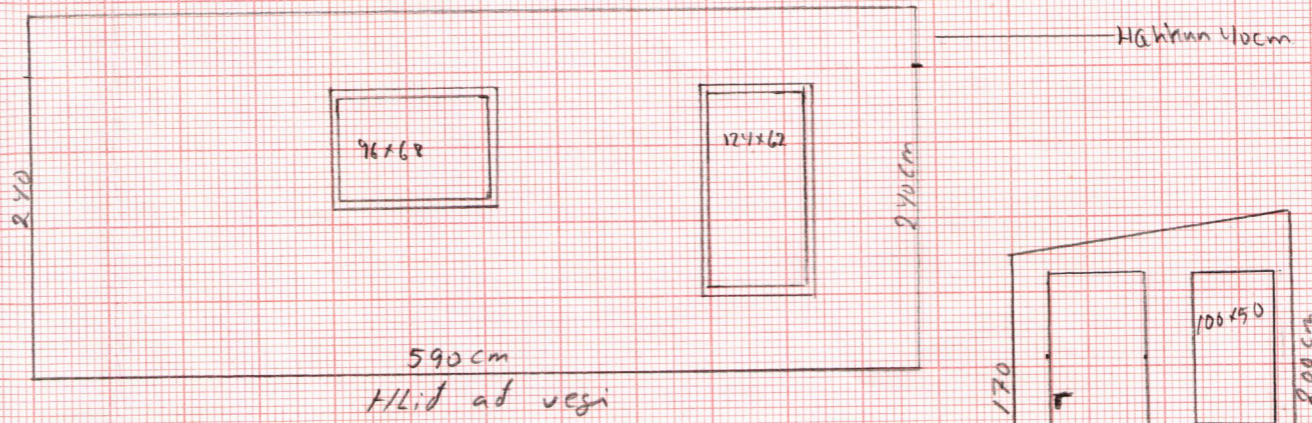
Hlidum 40cm

manir 70cm

Framlegja uppistödur um 40cm

Bolta spennbita svo vid í manir sem fer upp um 70cm

Panil um 60m²



kvardi: 1:5

Þorsteinn Sölvi Valdimarsson sími 5531116  
 Aftastaekkur 1. Þingsvallasveit (Stekjalundur)