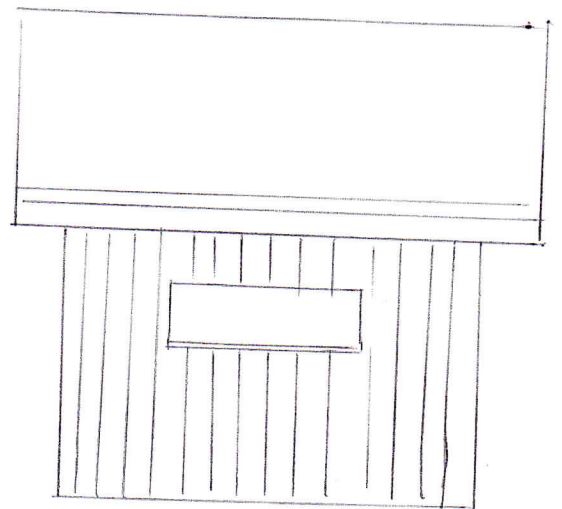
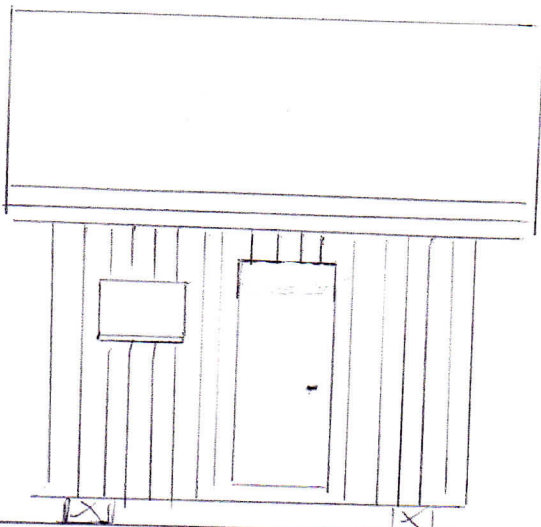
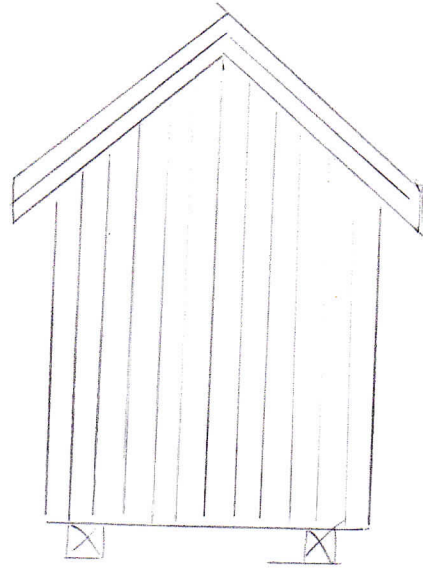
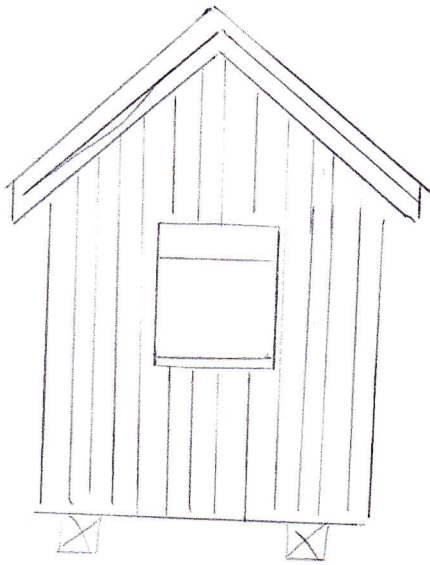
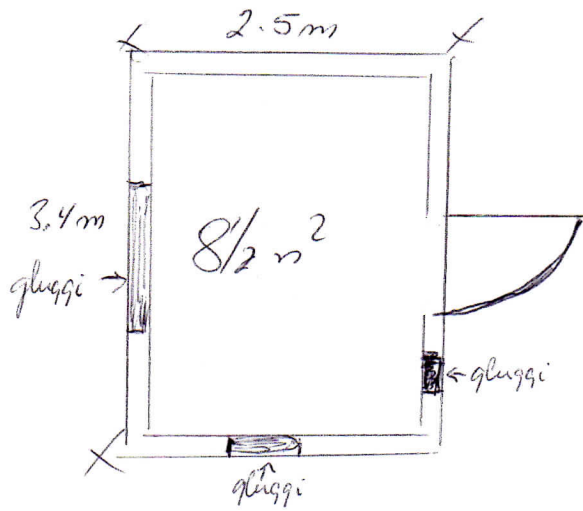


5/6 '92.

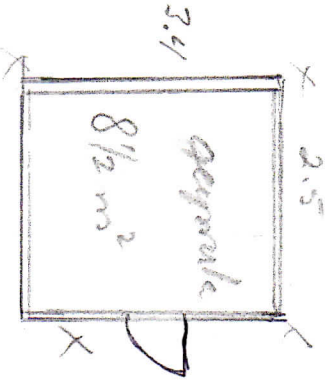
geymrökki við nemaskúli Vilhelms Ingólfssonar
á landi Miðfella Þingvallasveit.



Marken og gærdet i Land: Nishells Jerngærdene
 eig. Wilhelm Frøge & Søn.

5/6 ' 92 .

Størrelse



ca 10 meter

ramte. smide sig sig i maa' 92
 rende og her med afholdning
 og deler af gærdet. Med træder

Sindergaardskole
 Wilhelm

