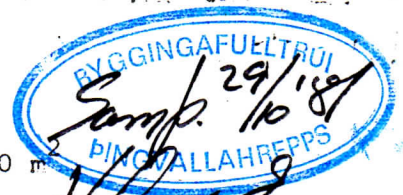


Sumarhús þessi eru framleidd í einigum

Stærðir eru 3: gerð B 1 - 38 m<sup>2</sup> gerð B 2 - 50 m<sup>2</sup>

gerð B 3 - 62 m<sup>2</sup> auk sólpalls



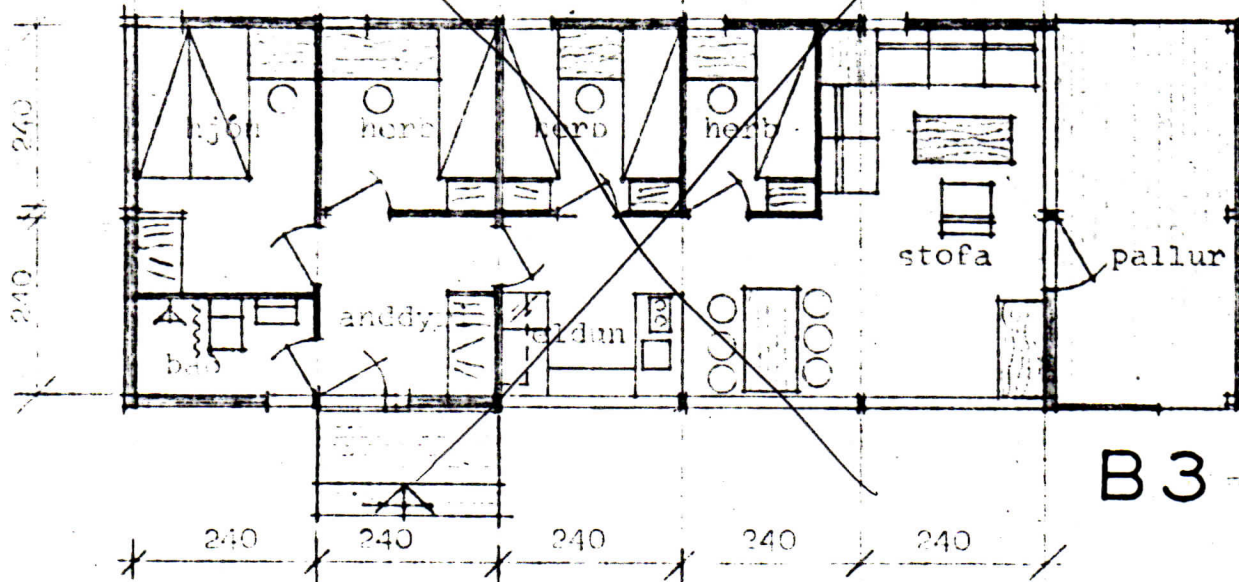
*Sigrún Þómasdóttir*

Húsin eru klædd utan með ~~stávarfandi og titaðri~~ ~~stá~~ strikuðum vatnsheldum krossviði.

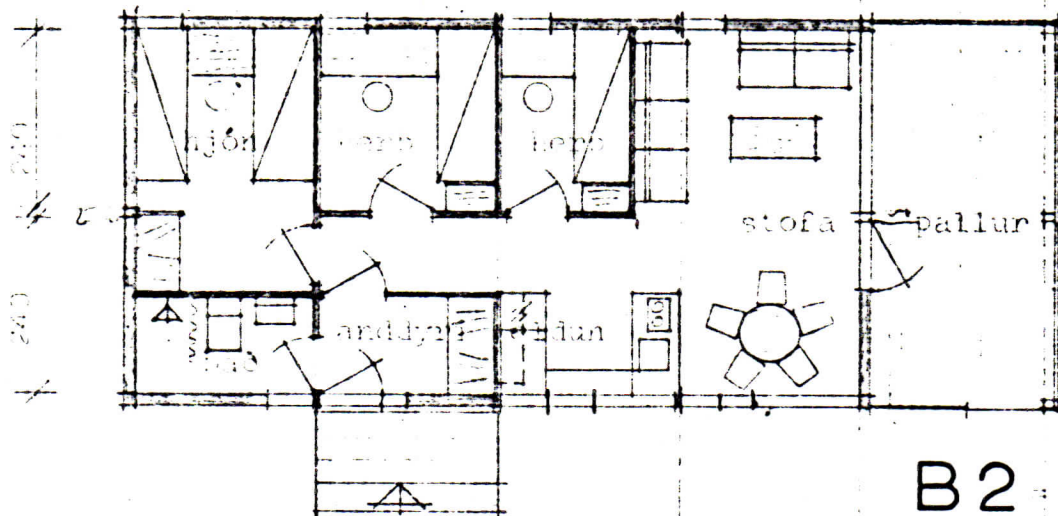
Einangrun: Útveggir eru einangraðir með 6 cm glerull, loft og gólf með 9 cm glerull. Gluggar eru með tvöföldu verksmiðjugleri.

*Sigrún Þómasdóttir*

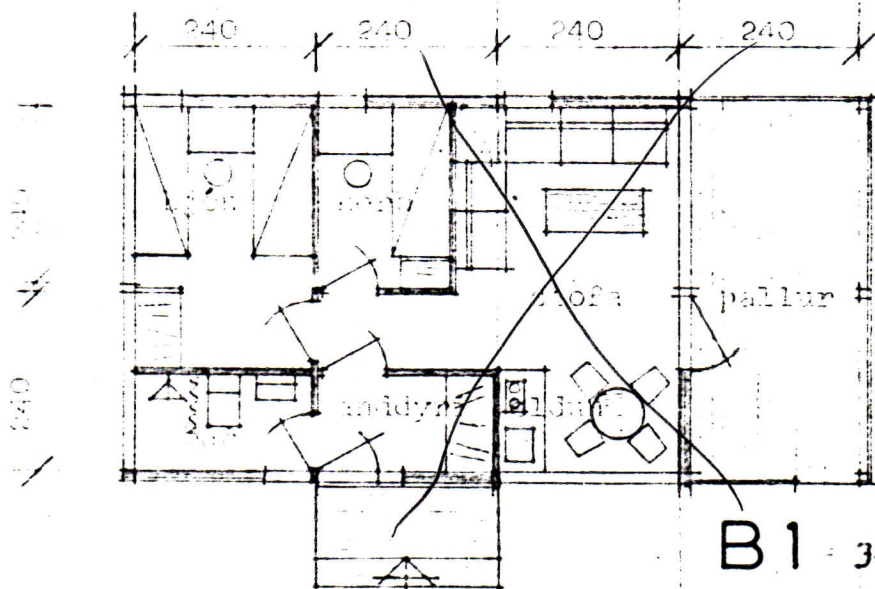
SUMARHÚS  
38 - 50 - 62 m<sup>2</sup>



**B3** - 62 m<sup>2</sup>



**B2** - 50 m<sup>2</sup>



**B1** - 38 m<sup>2</sup>

*Sigurður Guðmundsson hf.*

**SUMARHÚS**  
38 - 50 - 62 m<sup>2</sup>