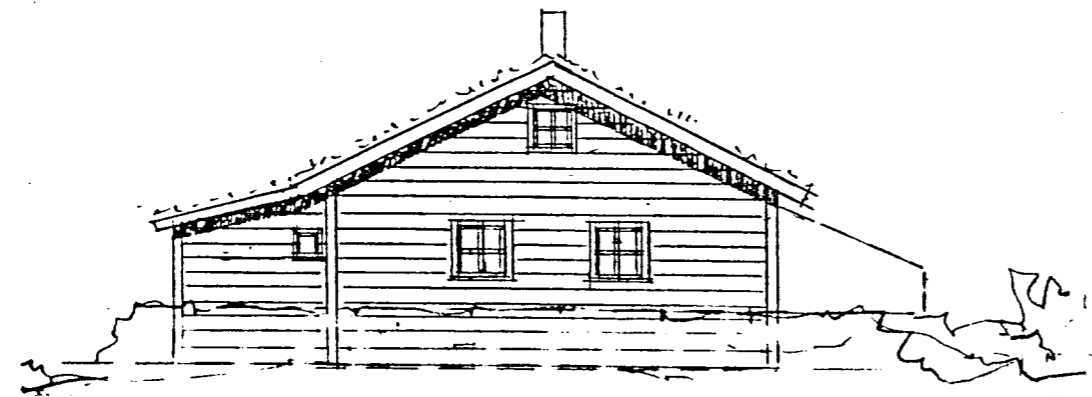
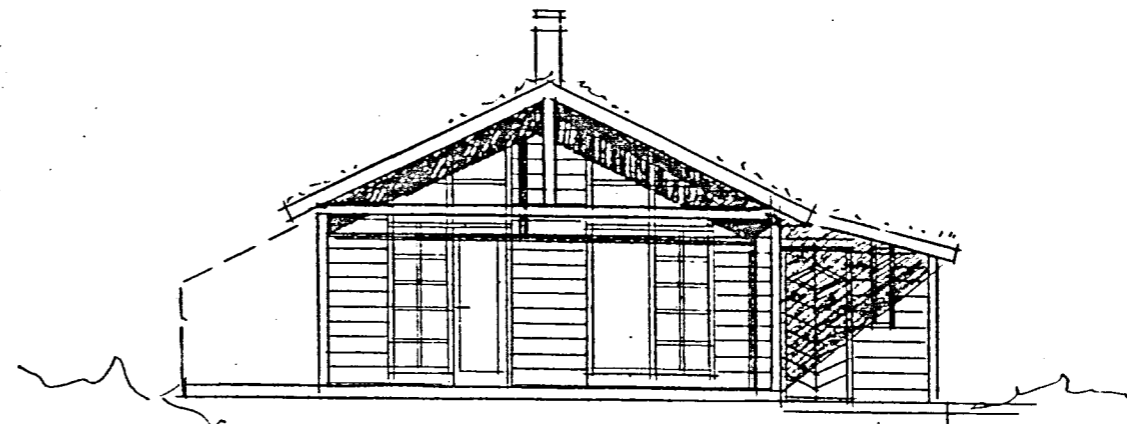


BYGGINGAFULLTRÚ  
Samp. 8/9 '92  
RÍNGVALLAHREPPS

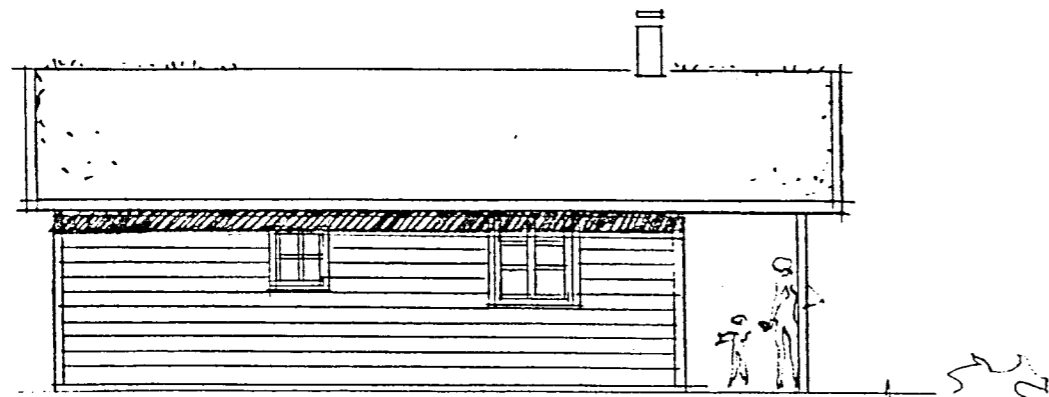
*Hinnar Þinnarson*



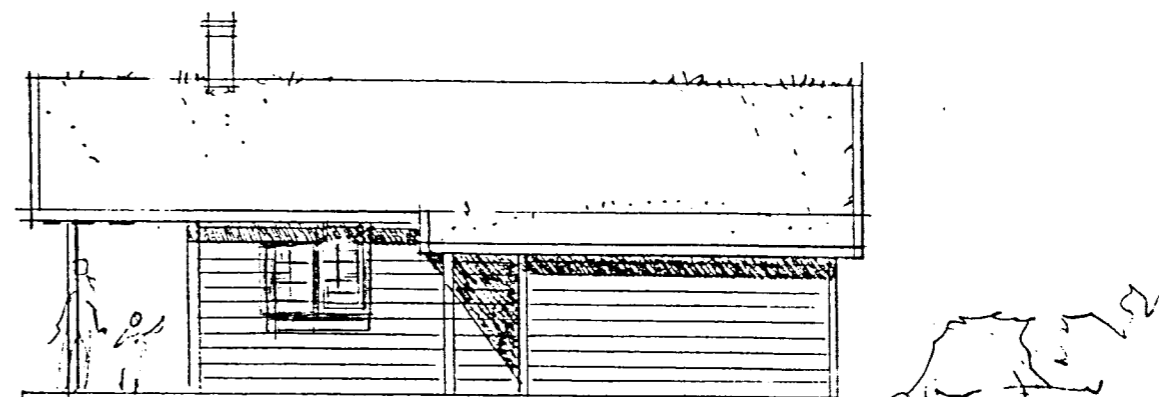
*nortur*



*sutur*



*vestlag hlit*



*anstlag hlit*

SUMARHÚS í landi Kárastaða  
fyrir Magnús Friðriksson og fjölskyldu

Arkitektar sf *Árnitts.*  
*tillaga 01.09.'91*