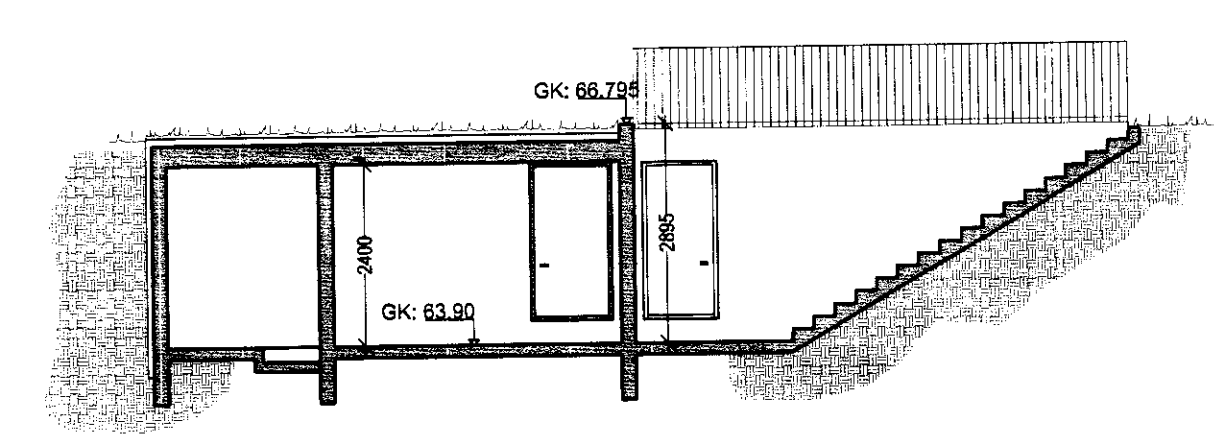
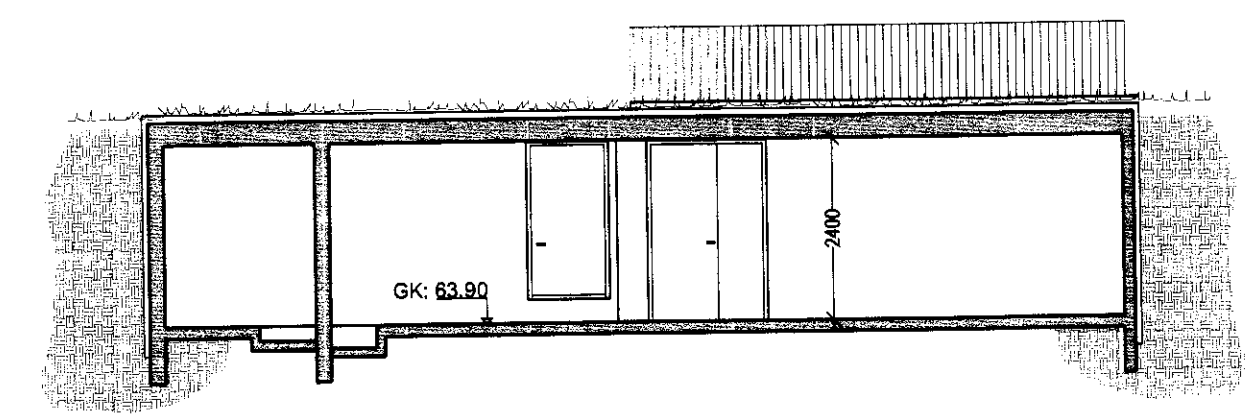


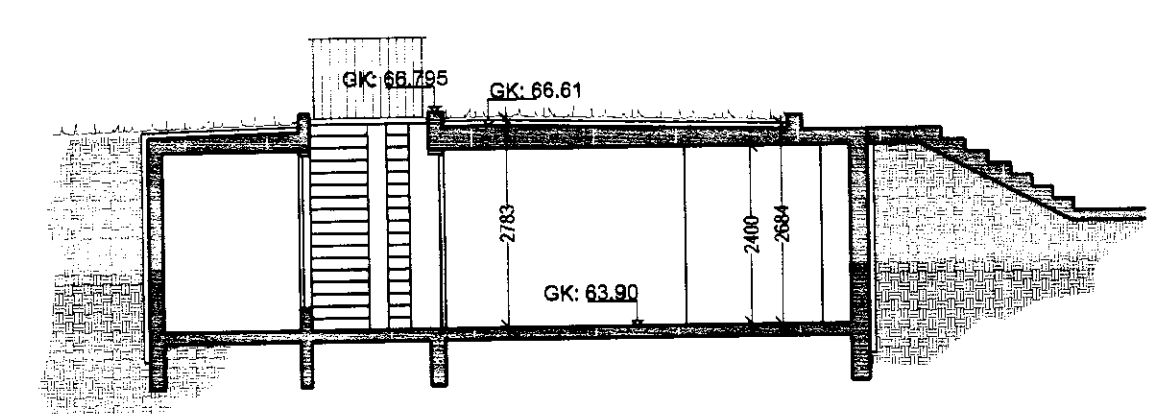
tæknirými - grunnmynd



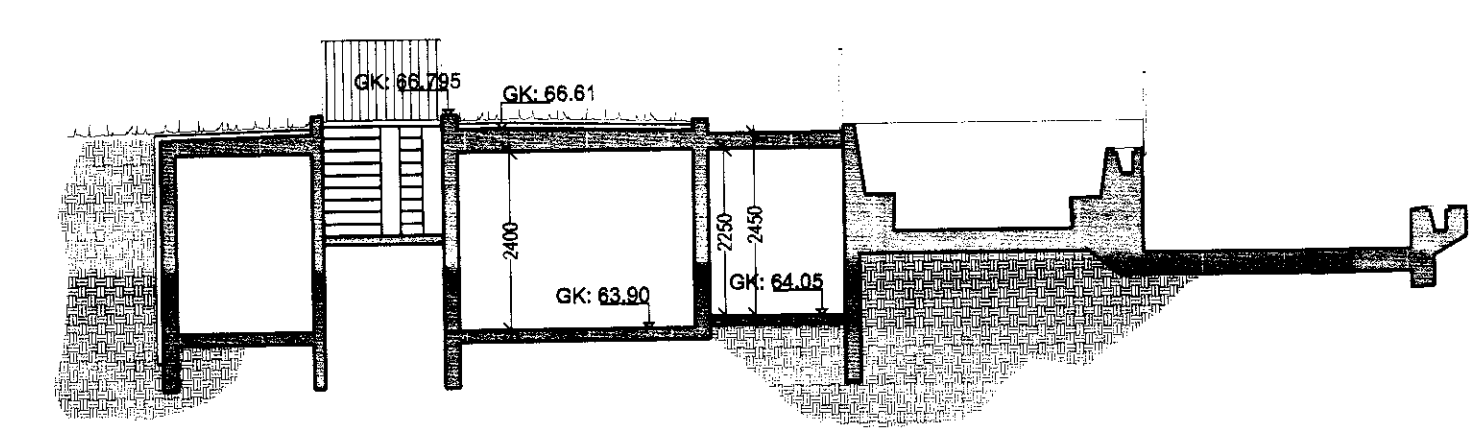
tæknirými - snið AA



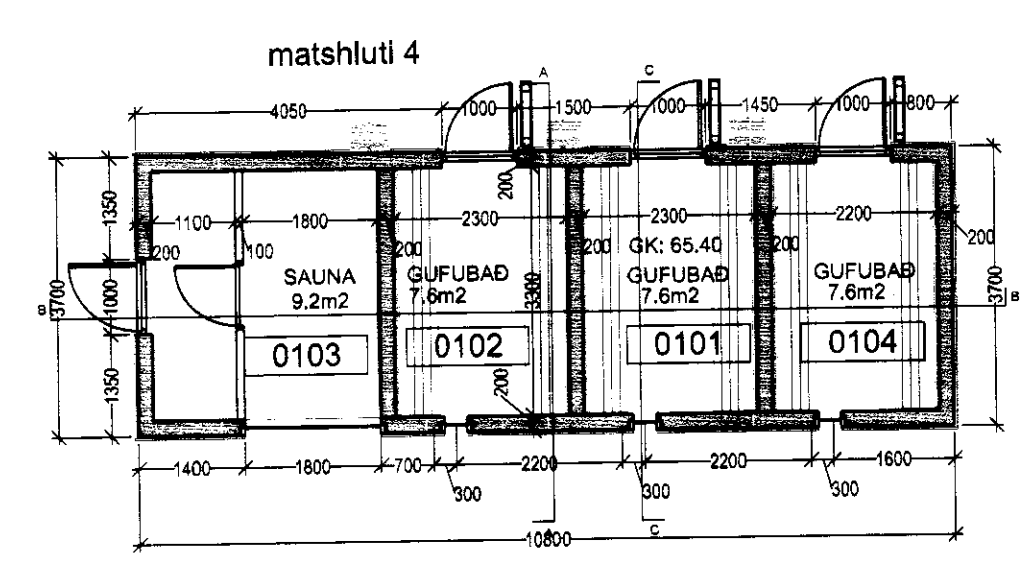
tæknirými - snið BB



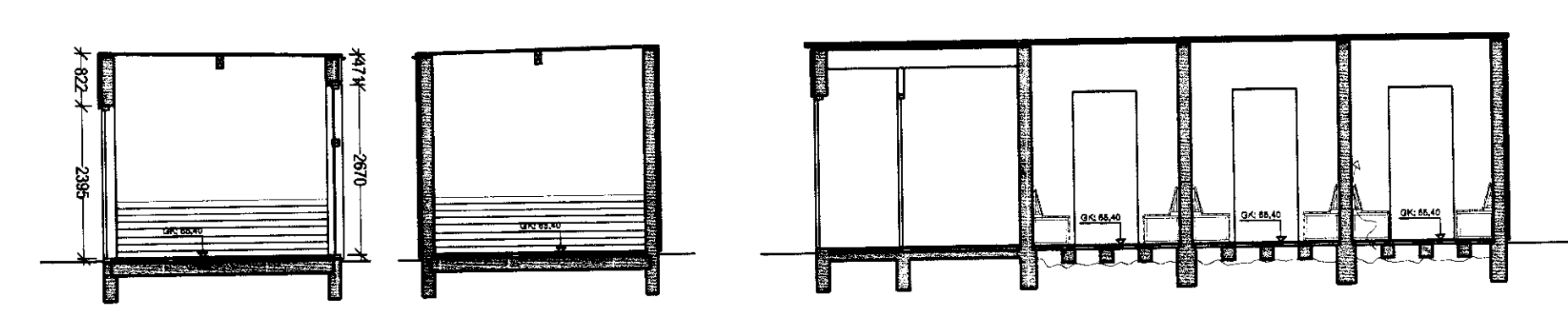
tæknirými - snið CC



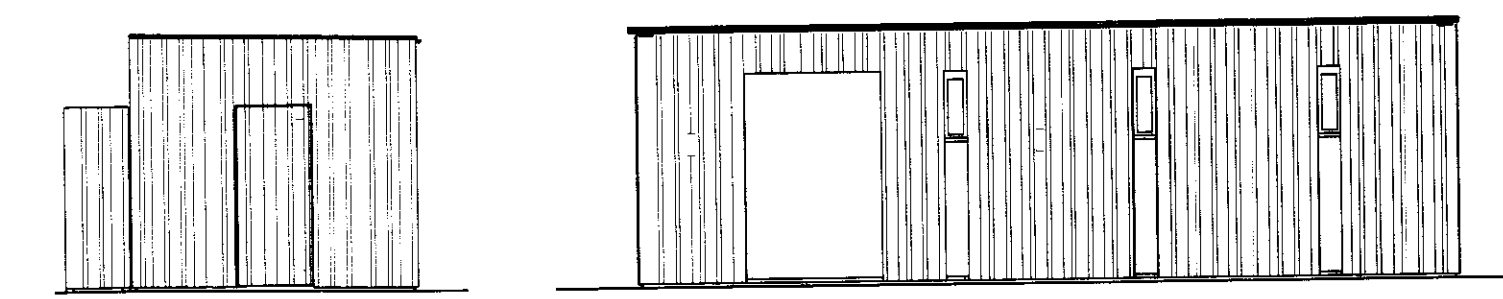
tæknirými - snið DD



gufuklefar - grunnmynd

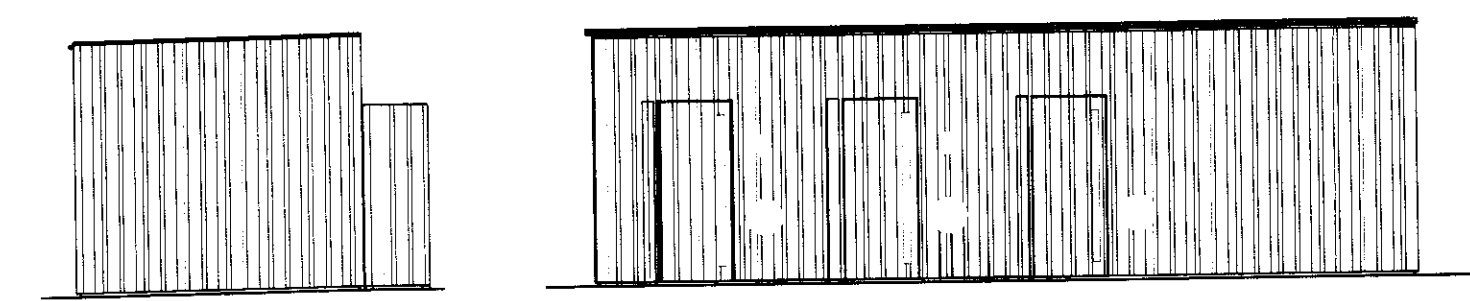


gufuklefar- snið CC gufuklefar- snið AA gufuklefar- snið BB



gufuklefar- útlit suður

gufuklefar- útlit austur



gufuklefar- útlit norður

gufuklefar- útlit vestur



STUDIO STRÍK  
 Sigríður Ólafsdóttir - arkitekt FAI  
 Hildur Aðalsteinsdóttir - innviðissarkitekt  
 K: 071070 5069  
 K: 141074 4809  
 K: 202845-3109  
 K: 180946-3069  
 á stofunni arkitektar  
 Bergshöfudvegur 10, RAÚK, Sími 551 1460, Suðurland

Gufubað við Laugarvatn  
 Tæknirými og gufuklefar