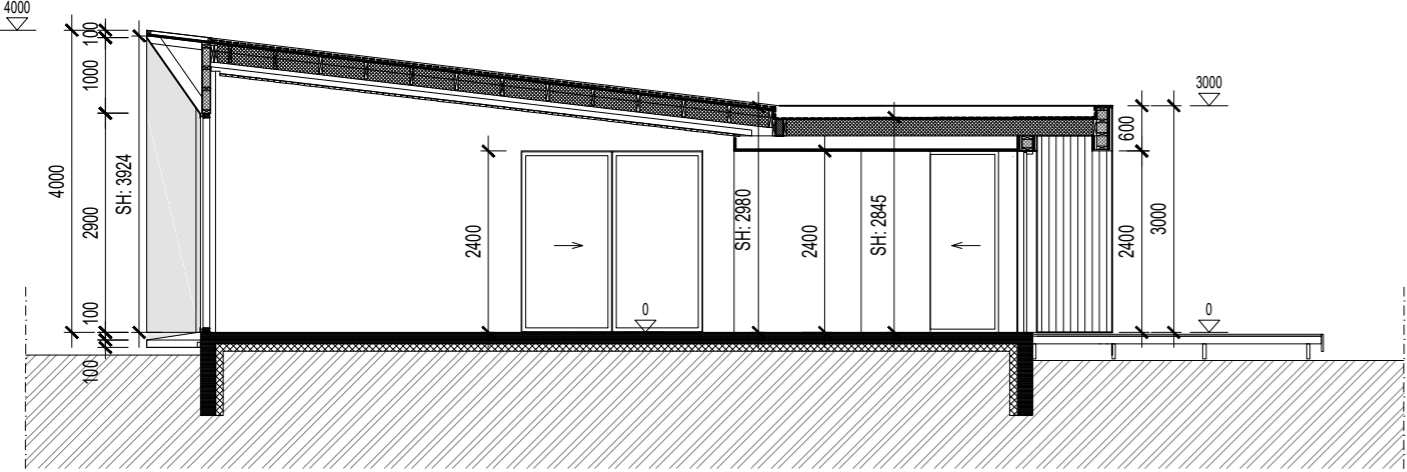
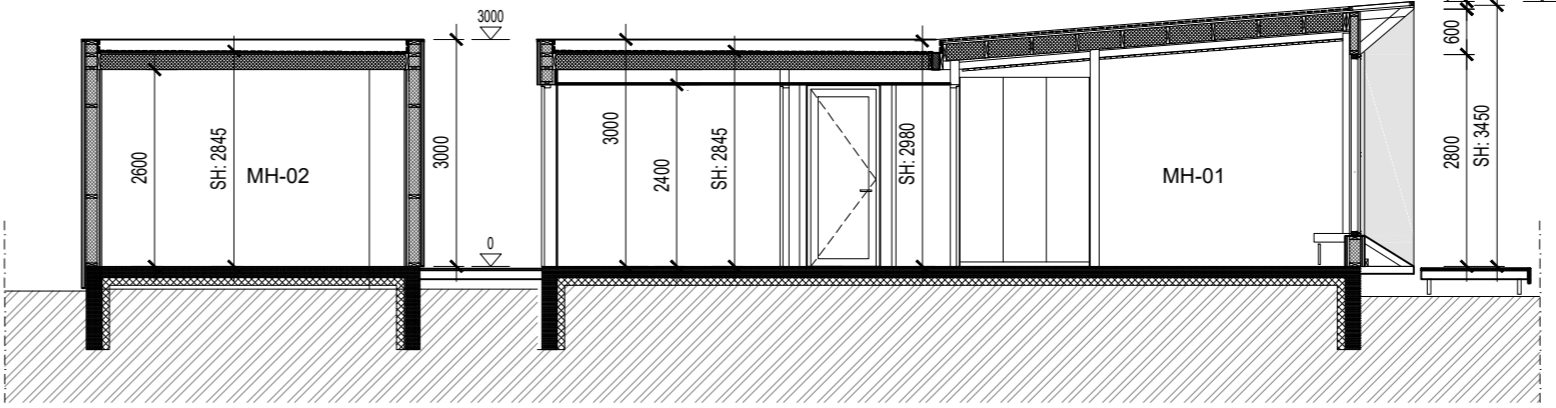


Breytt:



S 1.01



S 1.02

apparat

BJÖRGVÍN SNÆBJÖRNSSON ARKITEKT FÁI
270664-5989

ARMÚLI 24 PÓSTHÓLF 8127 108 REYKJAVÍK
SÍMI: 561 2660 / 898 9407 FAX: 561 2661 APPARAT@APPARAT.IS

VERK: Sumarhús Hestur lóð 81

TEIKN: Grunnmynd - Snið

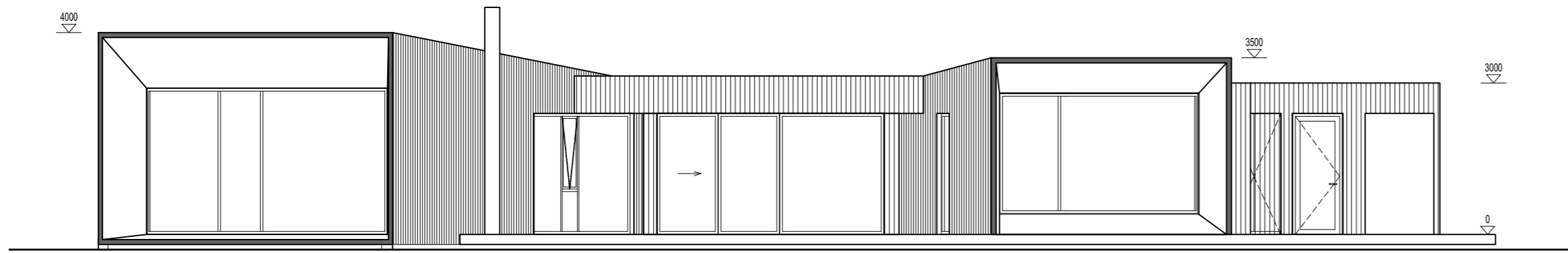
VERK NO: 2118

KVARDI: 1:100 (A2)

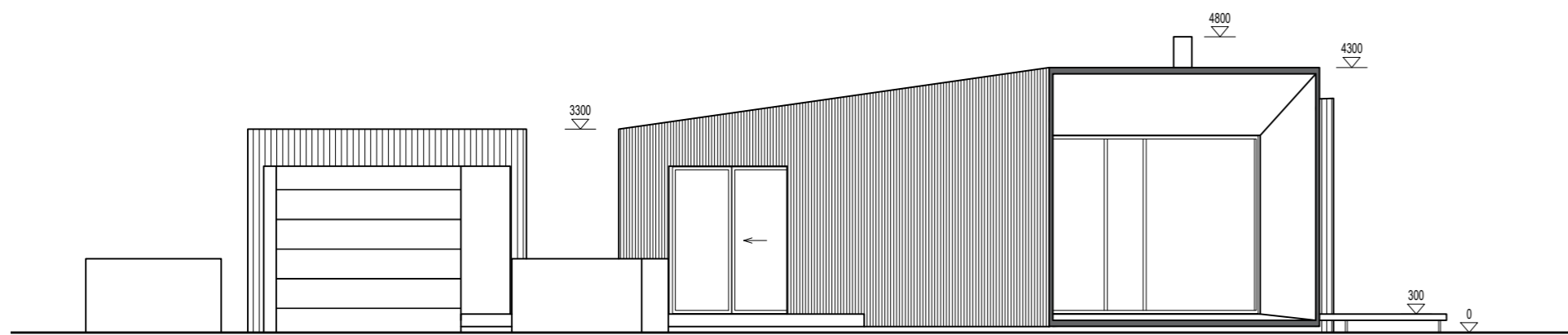
HANNAD: BS TEIKNAD: AK

DAGS: 6.6.2022 TEIKN NO: 1.01.02

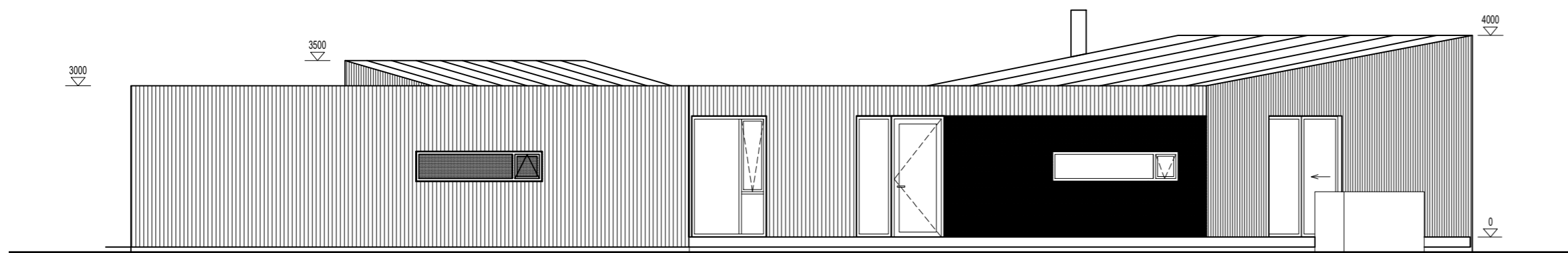
Elliprentun og afnot af teikningu þessari er óheimil nema með skriflegu samþykki höfundar í samnæmi við ákvaði höfundarlagi



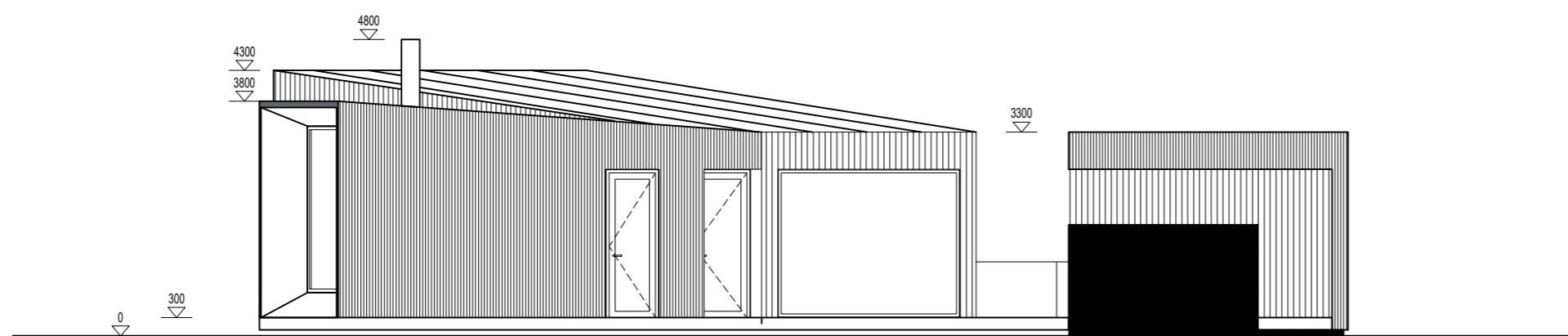
Vestur



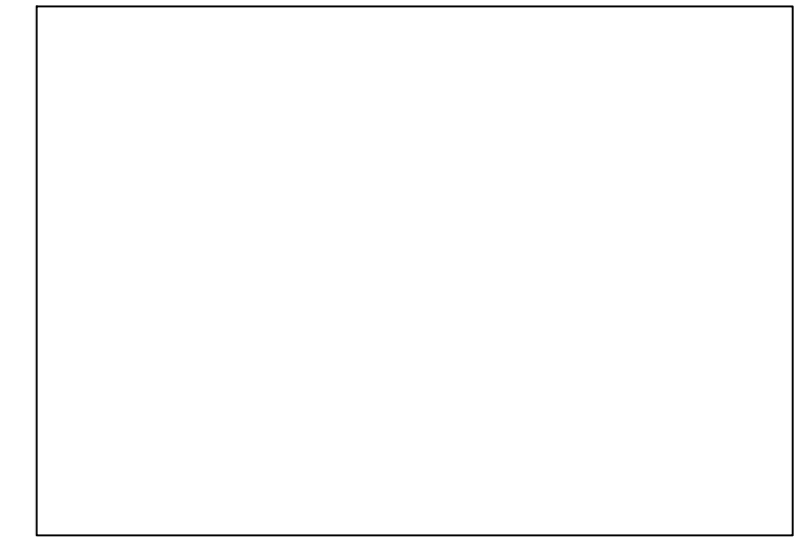
Norður



Austur



Suður



Breytt:

apparat

BJÖRGVIN SNÆBJÖRNSSON ARKITEKT FÁI
270664-5989

ÁRMÚLI 24 PÓSTHÓLF 8127 108 REYKJAVÍK
SÍMI: 561 2660 / 898 9407 FAX: 561 2661 APPARAT@APPARAT.IS

VERK: Sumarhús Hestur lóð 81

TEIKN: Ásýndir

VERK NO: 2118

KVARDI: 1:100 (A2)

HANNAD: BS TEIKNAD: AK

DAGS: 15.4.2022 TEIKN NO: 1.02.01

Elliprentun og afnot af teikningu þessari er óheimil nema með skriflegu samþykki höfundar í samræmi við ákvæði höfundarlaga