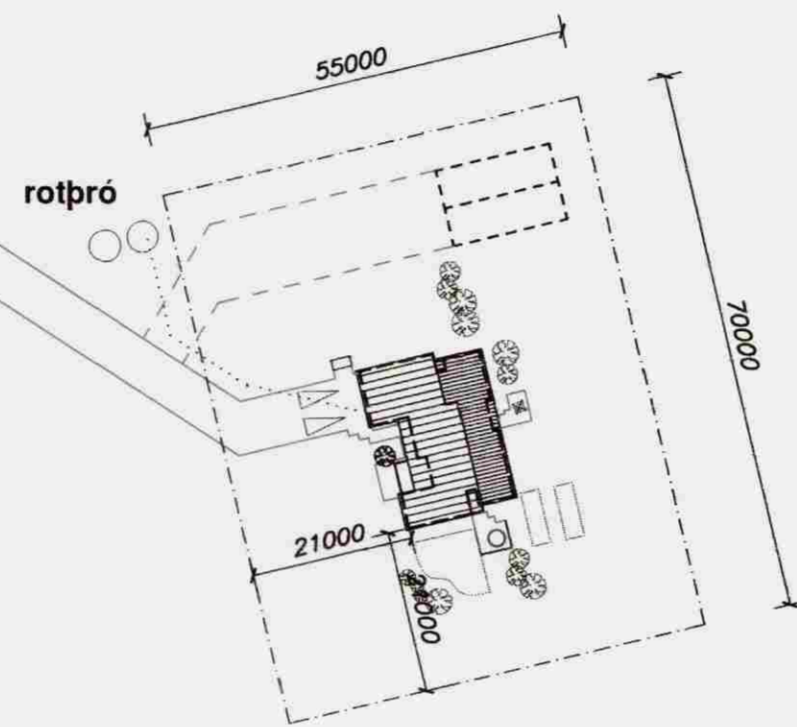
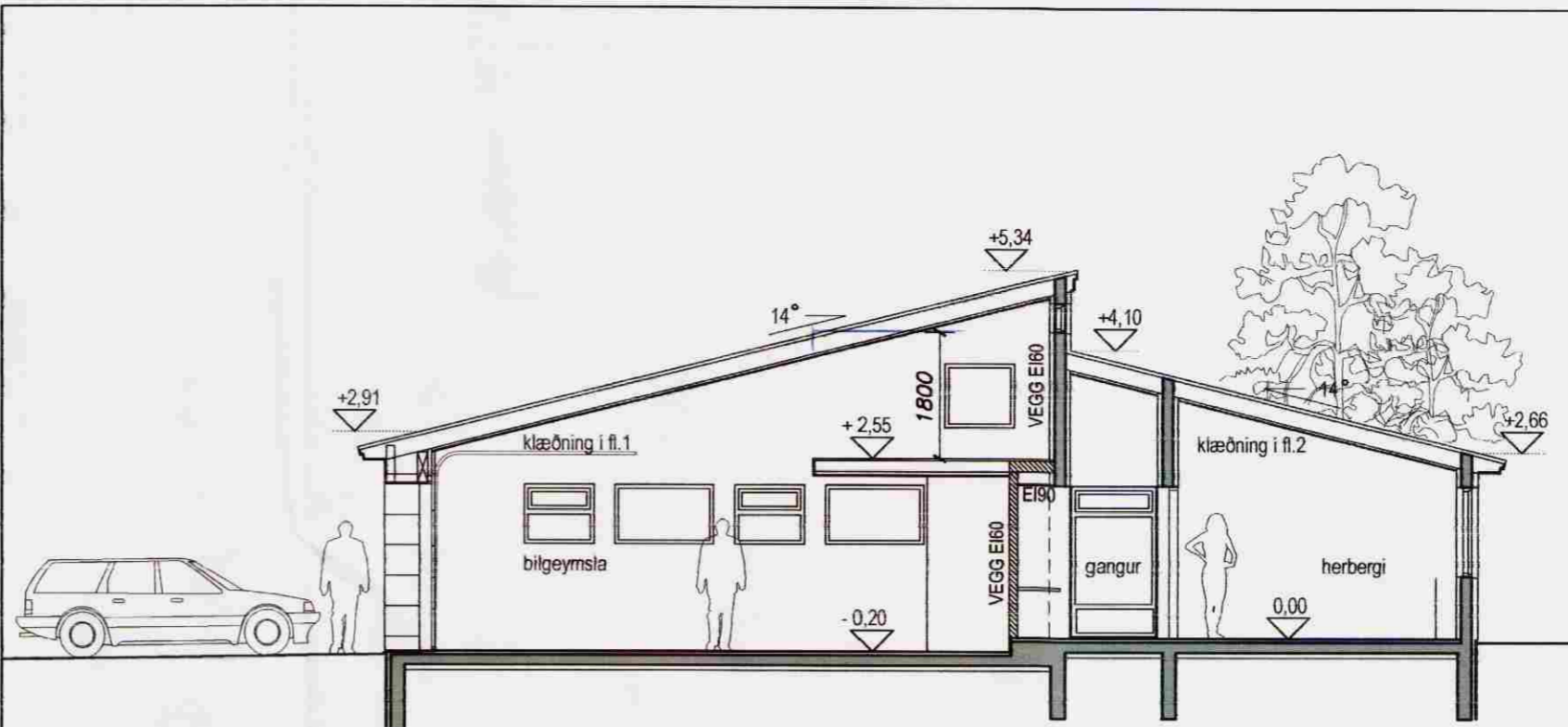


LÓÐ 4
F = 46,224,0m²

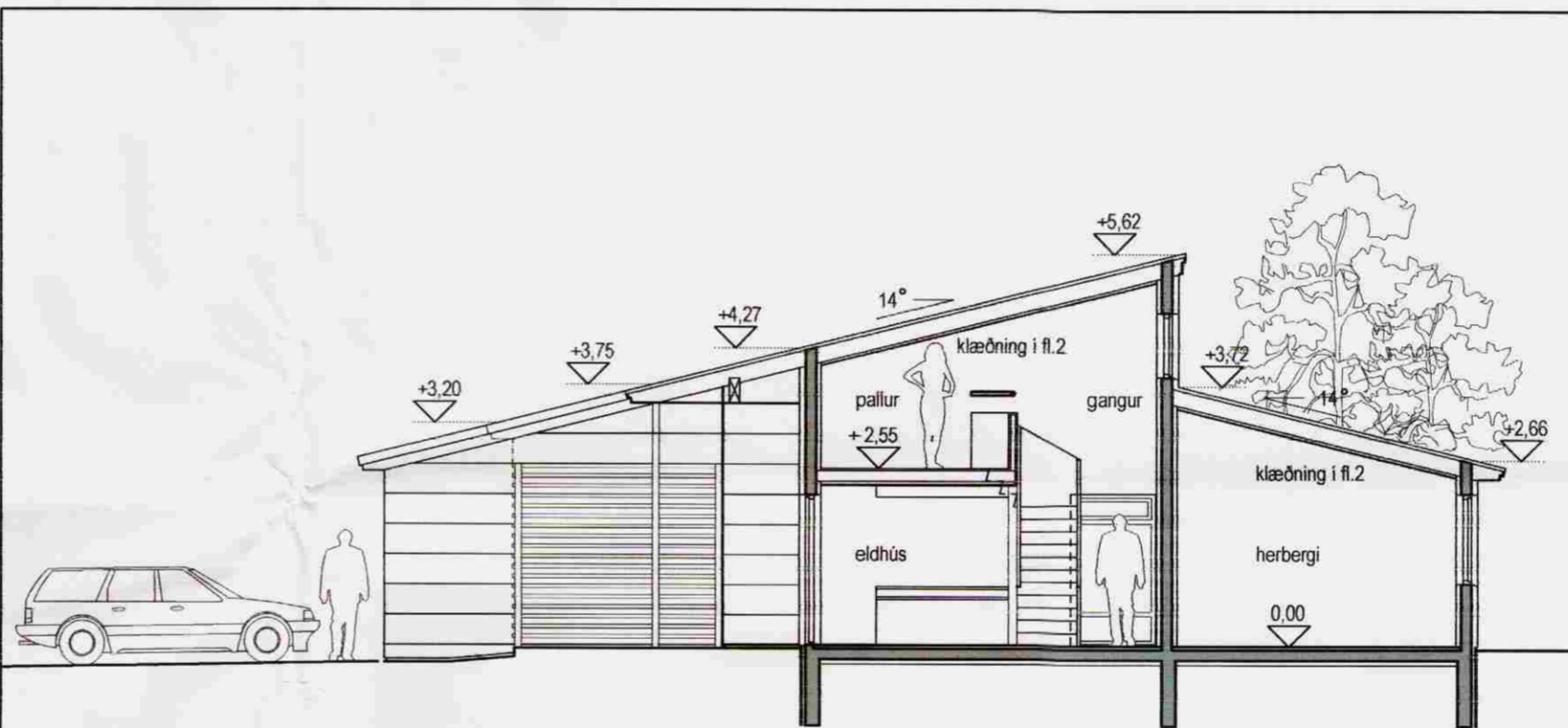


Villingarholtsvegur nr. 305

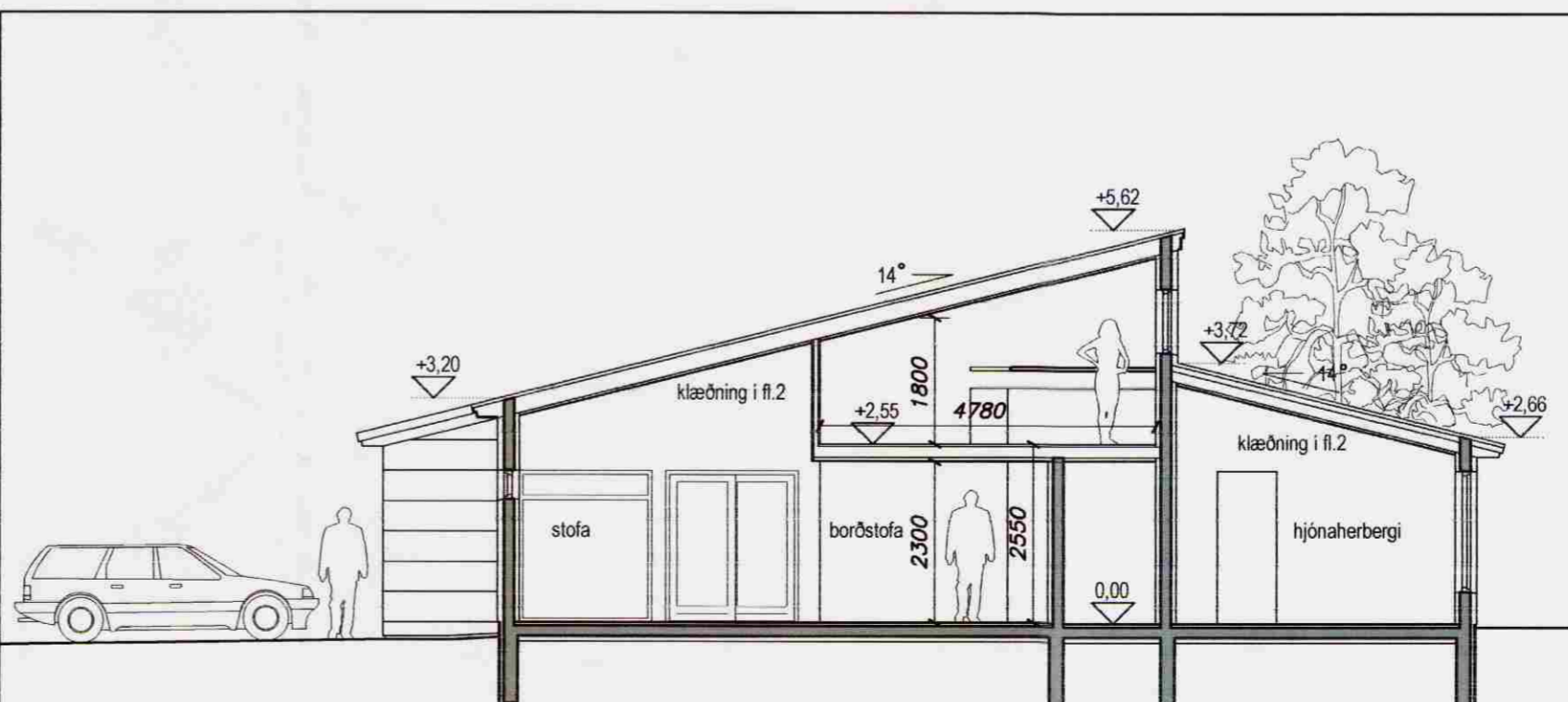
AFSTÖÐUMYND 1:1000



SNID A-A 1:100



SNID B-B 1:100



SNID C-C 1:100

Samþykkt

30 JULI 2008

Ragn Úrka
Bygginguvalfrúir uppveita Amessyslu

EINBÝLISHÚS MEÐ BÍLGEYMSLU

STADGREINTALA: 216782

Erum Arkitektar fái og fssa
Sími 520 9950
Grensásvegi 3,
Reykjavík 108

Halgi Bergmann Sigurðsson

Erling Grosen Pedersen kt. 230856-6059 Halgi Bergmann Sigurðsson kt. 31 240-7749 Jón Þórisson kt. 120154-5599

EFRI GRÓF 4, FLÓAHREPPI

AÐALUPPDRETTIR
AFSTÖÐUMYND OG SNID

mælikvarði	1:1000	1:100	verkn.
hannað	hbs	teiknað	hbs
hbs	hbs	samþykkt	hbs
dags. 22. 07. 2008			

19 - 01